

W.L. Sta. 45+36.54, Line 1 =
 B.L. 1 Sta. 53+45.00, 38.50' Lt.
 Install 1-12" x 8" CIMJ Tee (E)
 Install 1-8" Anch Valve Assy. (Gate Valve)(E)
 Valve Box Elev. = 119.54 Top
 3'-00"-00" Defl. (Lt.)

CAUTION
 Existing
 GSL
 Crossing

CAUTION
 Existing
 UGA&T
 Crossing

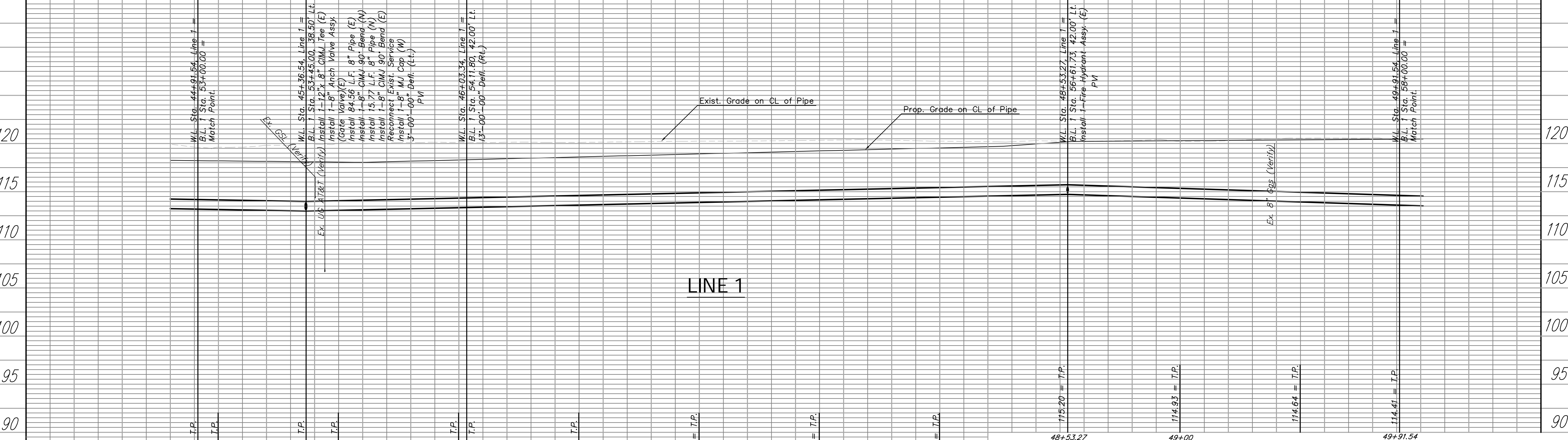
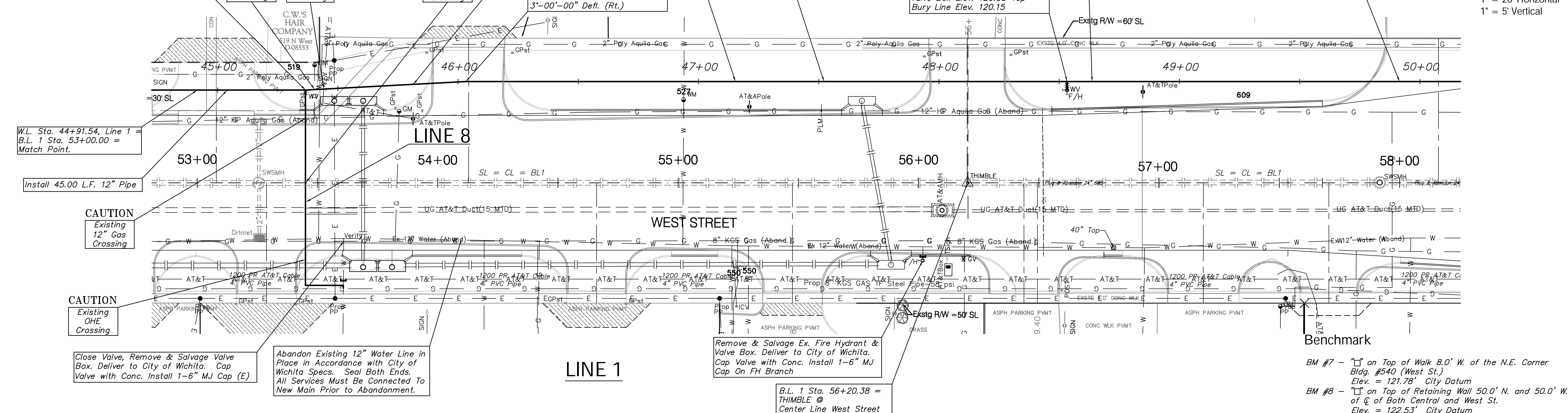
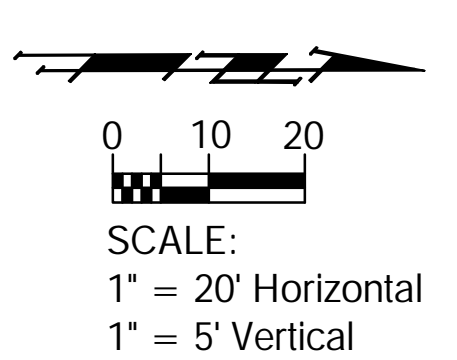
CAUTION
 Existing
 24" SWS
 Crossing

W.L. Sta. 46+03.34, Line 1 =
 B.L. 1 Sta. 54+11.80, 42.00' Lt.
 3'-00"-00" Defl. (Rt.)

W.L. Sta. 48+53.27, Line 1 =
 B.L. 1 Sta. 56+61.73, 42.00' Lt.
 L = 3.50'
 Valve Box Elev. 120.38 Top
 Bury Line Elev. 120.15

W.L. Sta. 49+91.54, Line 1 =
 B.L. 1 Sta. 58+00.00 =
 Match Point.

Note:
 See Water Meter
 Table For Service
 Locations.



BM #7 - "I" on Top of Walk 8.0' W. of the N.E. Corner Bldg. #540 (West St.) Elev. = 121.78' City Datum
 BM #8 - "I" on Top of Retaining Wall 50.0' N. and 50.0' W. of C. of Both Central and West St. Elev. = 122.53' City Datum