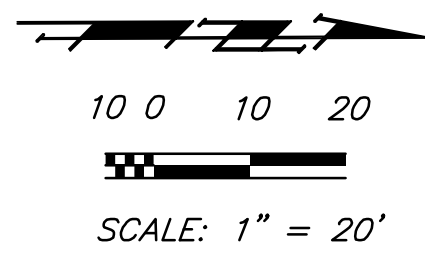


FHWA REGION NO.	STATE	PROJECT NO.	FISCAL YEAR	SHEET NO.	TOTAL SHEETS
7	KANSAS	87N-0459-01	2009	6	32

Fed. Aid # HSIP-N045(901)

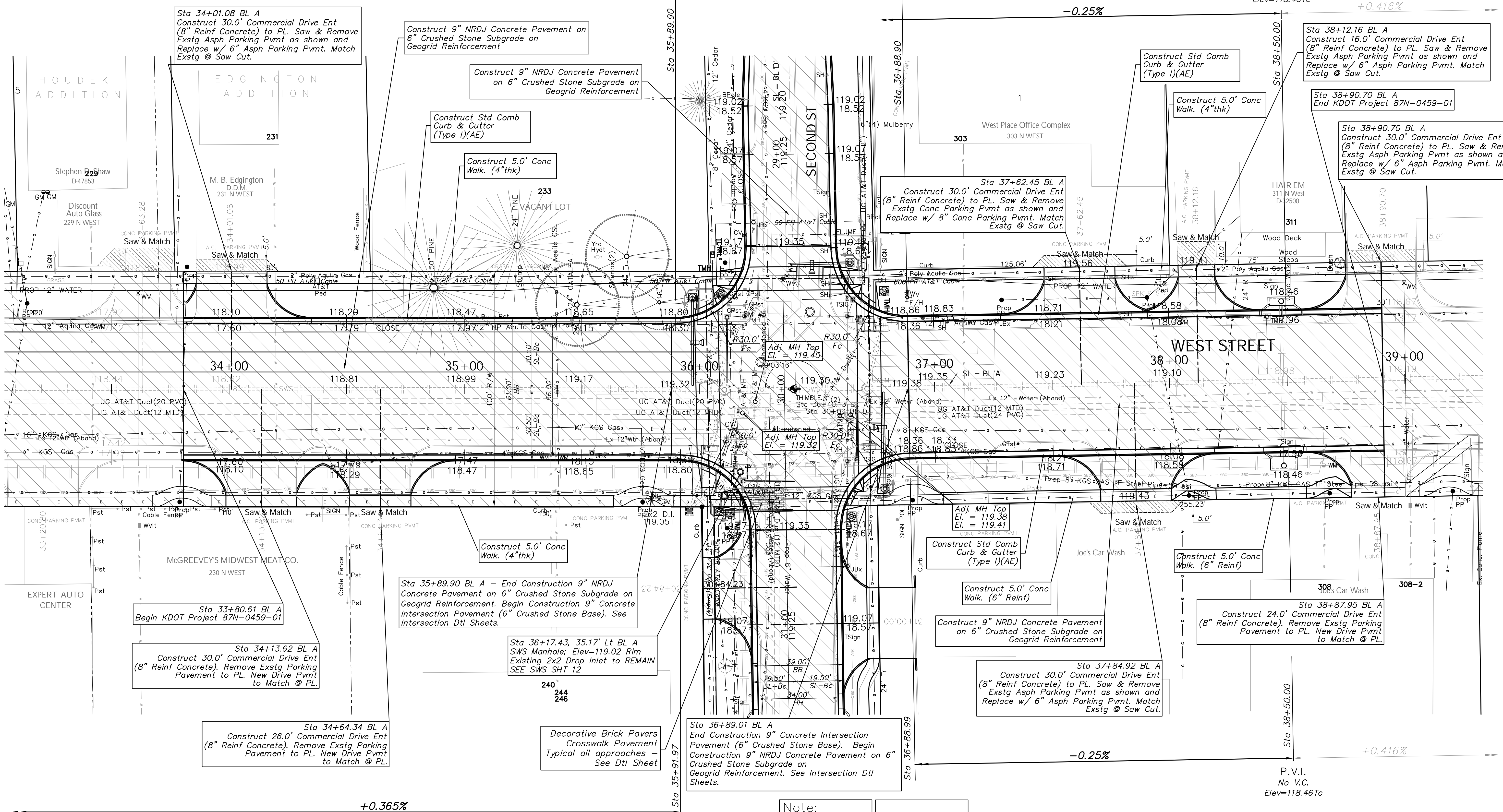


+0.365%

-0.25%

P.V.I.
No V.C.
Elev=118.46Tc

+0.416%



+0.365%

-0.25%

P.V.I.
No V.C.
Elev=118.46Tc

+0.416%

Note:

Trees/Shrubs to be removed are marked thus:



Pavement, Sidewalks, and Etc. To Be Removed Are Indicated By:



Drawing File: E:\Eng\West Street Paving New\Land\dwg\Bass.dwg

Design: T. Azire

Drawn: Sonny

Approved: J.F. Bradley

Scale: 1:20

CAPITAL IMPROVEMENT PROJECT

WEST STREET PAVING

Sta 33+80.61 BL A to Sta 38+90.70 BL A

WEST STREET PAVING - 2nd & West St.

Baughman Company, P.A.
 315 Ellis St. Wichita, KS 67211 P 316-262-7271 F 316-262-0149
 ENGINEERING | SURVEYING | PLANNING | LANDSCAPE ARCHITECTURE