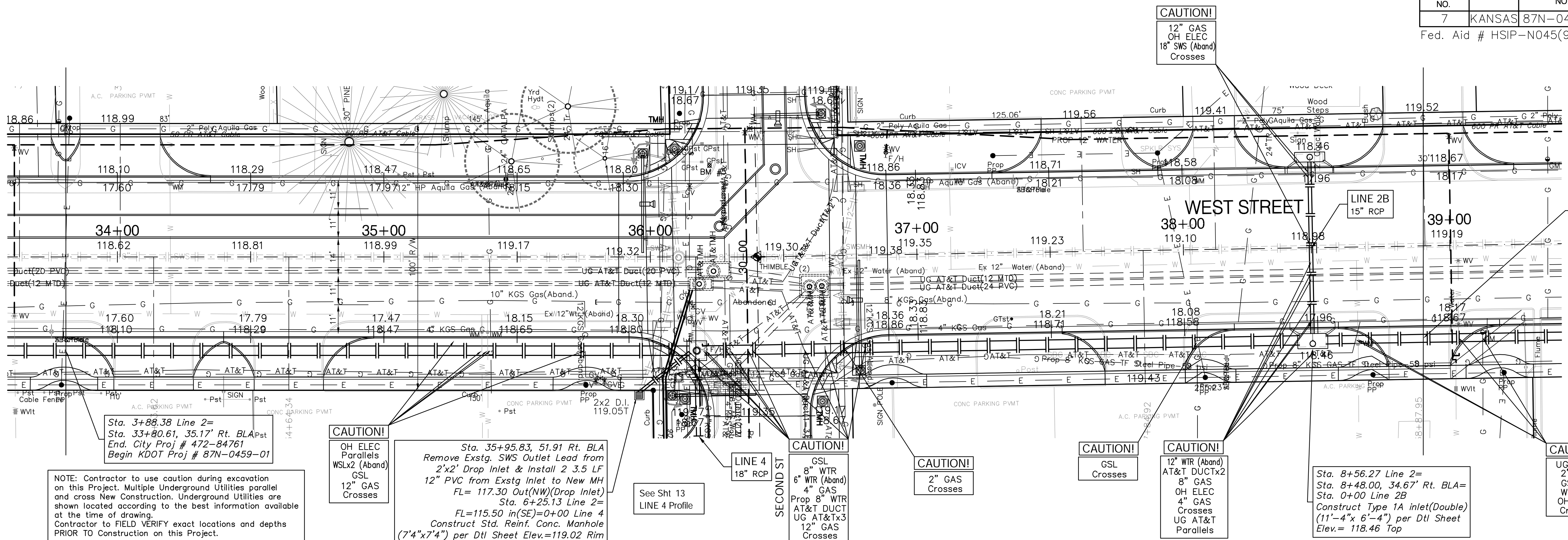


FHWA REGION NO.	STATE	PROJECT NO.	FISCAL YEAR	SHEET NO.	TOTAL SHEETS
7	KANSAS	87N-0459-01	2009	12	32

Fed. Aid # HSIP-N045(901)

SCALE:
1" = 20' HORIZONTAL
1" = 5' VERTICAL



NOTE: Contractor to use caution during excavation on this Project. Multiple Underground Utilities parallel and cross New Construction. Underground Utilities are shown located according to the best information available at the time of drawing. Contractor to FIELD VERIFY exact locations and depths PRIOR TO Construction on this Project.

CAUTION!
OH ELEC
Parallels
WSLx2 (Aband)
GSL
12" GAS
Crosses

Sta. 35+95.83, 51.91 Rt. BLA
Remove Exstg. SWS Outlet Lead from
2'x2' Drop Inlet & Install 2 3.5 LF
12" PVC from Exstg Inlet to New MH
FL= 117.30 Out(NW)(Drop Inlet)
Sta. 6+25.13 Line 2=
FL=115.50 in(SE)=0+00 Line 4
Construct Std. Reinf. Conc. Manhole
(7'4"x7'4") per Dtl Sheet Elev.=119.02 Rim

CAUTION!
GSL
8" WTR
6" WTR (Aband)
4" GAS
Prop 8" WTR
AT&T DUCT
UG AT&Tx3
12" GAS
Crosses

CAUTION!
2" GAS
Crosses

CAUTION!
GSL
Crosses

CAUTION!
12" WTR (Aband)
AT&T DUCTx2
8" GAS
OH ELEC
4" GAS
Crosses
UG AT&T
Parallels

Sta. 8+56.27 Line 2=
Sta. 8+48.00, 34.67' Rt. BLA=
Sta. 0+00 Line 2B
Construct Type 1A Inlet(Double)
(11'-4"x 6'-4") per Dtl Sheet
Elev.= 118.46 Top

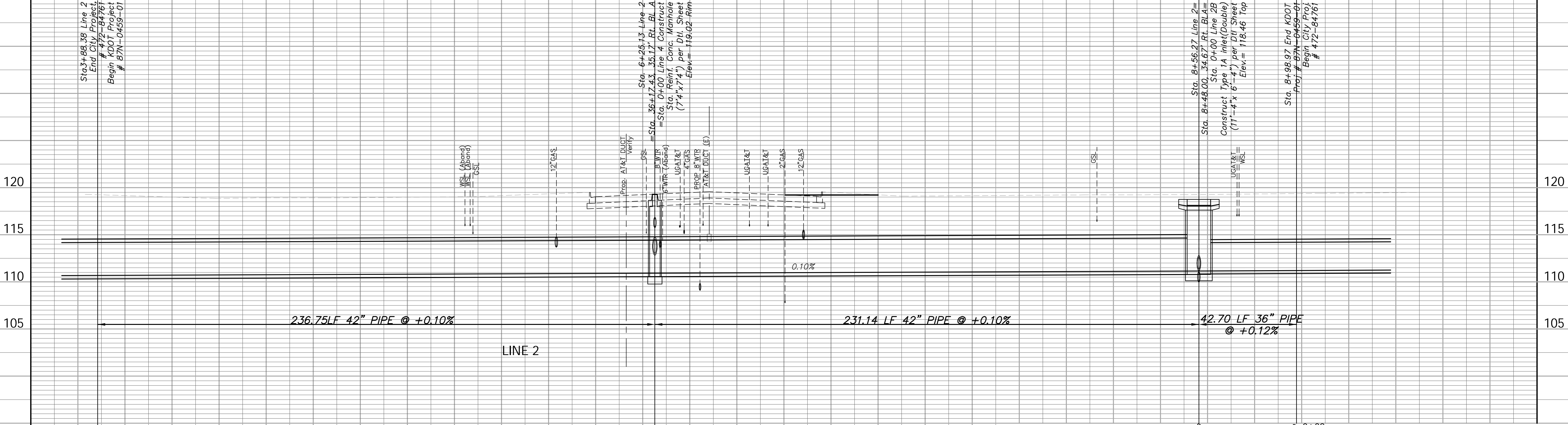
CAUTION!
UG AT&T
2" WTR
GSL x2
WSL x2
OH ELEC
Crosses

Sta. 3+88.38 Line 2
End City Project
472-84761
Begin KDOT Project
87N-0459-01

Sta. 6+25.13 Line 2
=Sta. 36+17.43, 35.17' Rt. BLA
=Sta. 0+00 Line 4. Construct
Std. Reinf. Conc. Manhole
(7'4"x7'4") per Dtl Sheet
Elev.= 119.02 Rim

Sta. 8+56.27 Line 2=
Sta. 8+48.00, 34.67' Rt. BLA=
Sta. 0+00 Line 2B
Construct Type 1A Inlet(Double)
(11'-4"x 6'-4") per Dtl Sheet
Elev.= 118.46 Top

Sta. 8+98.97 End KDOT
Project # 87N-0459-01
Begin City Project
472-84761



236.75 LF 42" PIPE @ +0.10%

231.14 LF 42" PIPE @ +0.10%

42.70 LF 36" PIPE @ +0.12%

Drawing File: E:\West St Land\Draw\DrawBase Design: T. Azere Drawn: K. White Approved: J. F. Bradley Scale: 1:20	Project No. 04.04.E859 CAPITAL IMPROVEMENT PROJECT WEST STREET SWS LINE 2 Sta 3+88.38 to Sta 8+98.97 STORM WATER SEWER IMPROVEMENTS	November 2008 Baughman Company, P.A. 315 Ellis St. Wichita, KS 67211 P 316.262.7271 F 316.262.0149 ENGINEERING SURVEYING PLANNING LANDSCAPE ARCHITECTURE	SHEET 12 OF 32
--	--	--	---------------------------------------