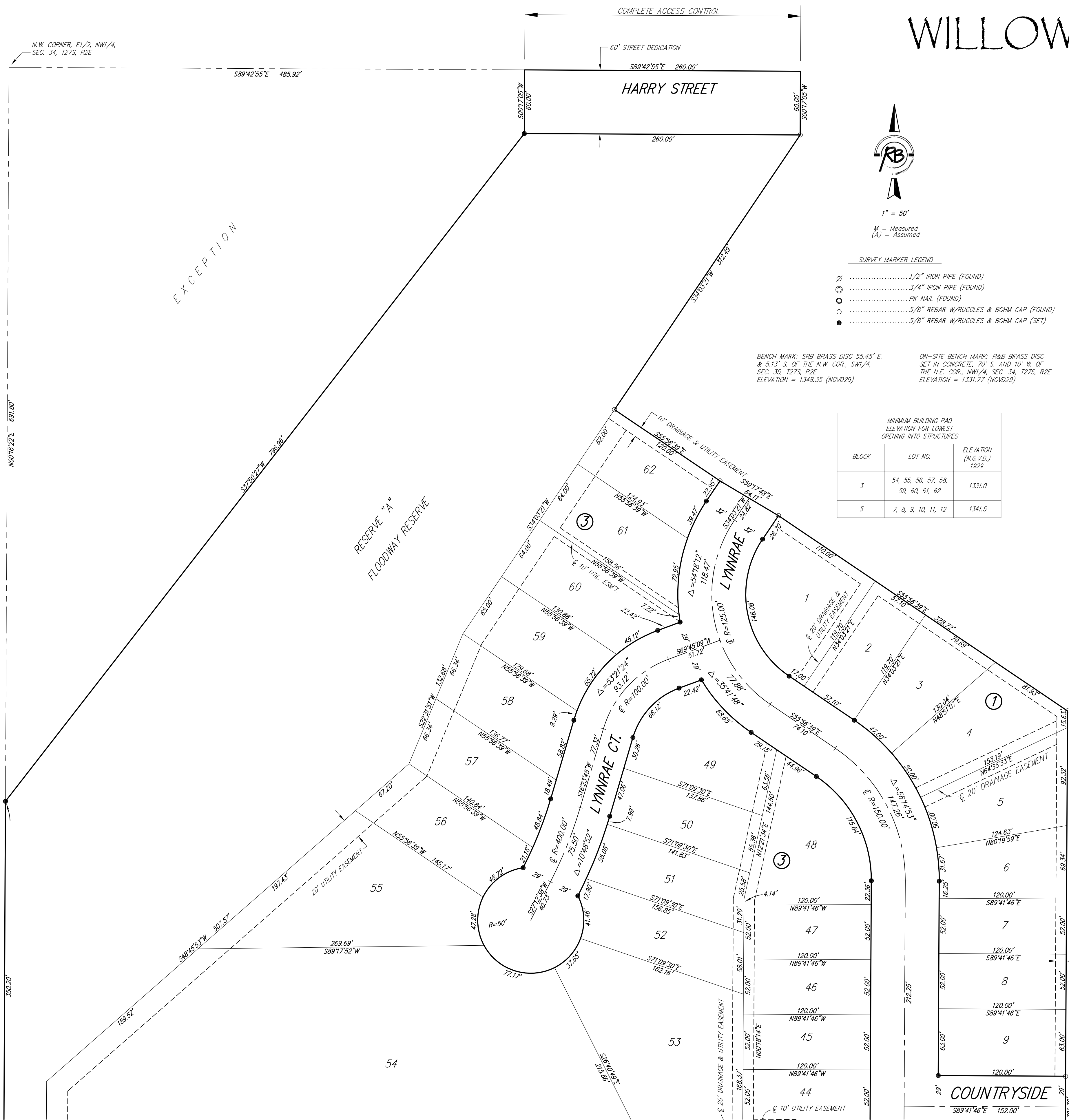


WILLOW CREEK EAST 2nd ADDITION

Wichita, Sedgwick County, Kansas



State of Kansas)
Sedgwick County) SS

We, Ruggles & Bohm, P.A., Land Surveyors in aforesaid county and state, do hereby certify that, under the supervision of the undersigned, we have surveyed and platted "WILLOW CREEK EAST 2nd ADDITION", Wichita, Sedgwick County, Kansas, and that the accompanying plat is a true and correct exhibit of the property surveyed, described as follows:

The East Half of the Northwest Quarter of Section 34, Township 27 South, Range 2 East of the 6th P.M., Sedgwick County, Kansas, EXCEPT that part described as beginning at the Northwest corner of said East Half, thence S89°42'55"E along the north line of said East Half, 485.92 feet; thence S00°17'05"W, 60.00 feet; thence S37°50'27"W, 796.96 feet to the west line of said East Half, thence N00°16'22"E along said west line, 691.80 feet to the place of beginning, AND EXCEPT that part platted as Willow Creek East, Wichita, Sedgwick County, Kansas.

All public easements and dedications are hereby vacated by virtue of K.S.A. 12-512(b).

Ruggles & Bohm, P.A.

Thomas C. Ruggles
Land Surveyor

We, the undersigned, holders of a mortgage on the above described property, do hereby consent to this plat of "WILLOW CREEK EAST 2nd ADDITION", Wichita, Sedgwick County, Kansas, this _____ day of _____, 200__.

Garden Plain State Bank

Pat Waldon
President

State of Kansas)
Sedgwick County) SS
The foregoing instrument acknowledged before me, this _____ day of _____, 200__, by Pat Waldon, President of Garden Plain State Bank, on behalf of the Bank.

Notary Public

My appointment expires _____

This plat of "WILLOW CREEK EAST 2nd ADDITION", Wichita, Sedgwick County, Kansas, has been submitted to and approved by the Wichita-Sedgwick County Metropolitan Area Planning Commission, Wichita, Kansas.

Dated this _____ day of _____, 2008.
Wichita-Sedgwick County Metropolitan Area Planning Commission

Darrell Downing
Chair

John L. Schlegel
Secretary

This plat approved and all dedications shown hereon accepted by the City Council of the City of Wichita, Kansas, this _____ day of _____, 2008.

At the Direction of the City Council

Carl Brewer
Mayor

Karen Sublett
City Clerk

Reviewed in accordance with K.S.A. 58-2005 on this _____ day of _____, 2008.

Deputy County Surveyor
Tricia L. Robello, LS #1246
Sedgwick County Kansas

Entered on transfer record this _____ day of _____, 2008.

Don Brace
County Clerk

State of Kansas)
Sedgwick County) SS

This is to certify that this plat has been filed for record in the office of the Register of Deeds, this _____ day of _____, 2008, at _____ o'clock _____ M., and is duly recorded.

Bill Meek
Register of Deeds

Tonya Buckingham
Deputy

State of Kansas)
Sedgwick County) SS

The foregoing instrument acknowledged before me, this _____ day of _____, 200__, by Stephen G. Miller, President, on behalf of Crestview Heights Development, L.L.C..

Mildred E. Franz
Notary Public

My appointment expires _____

