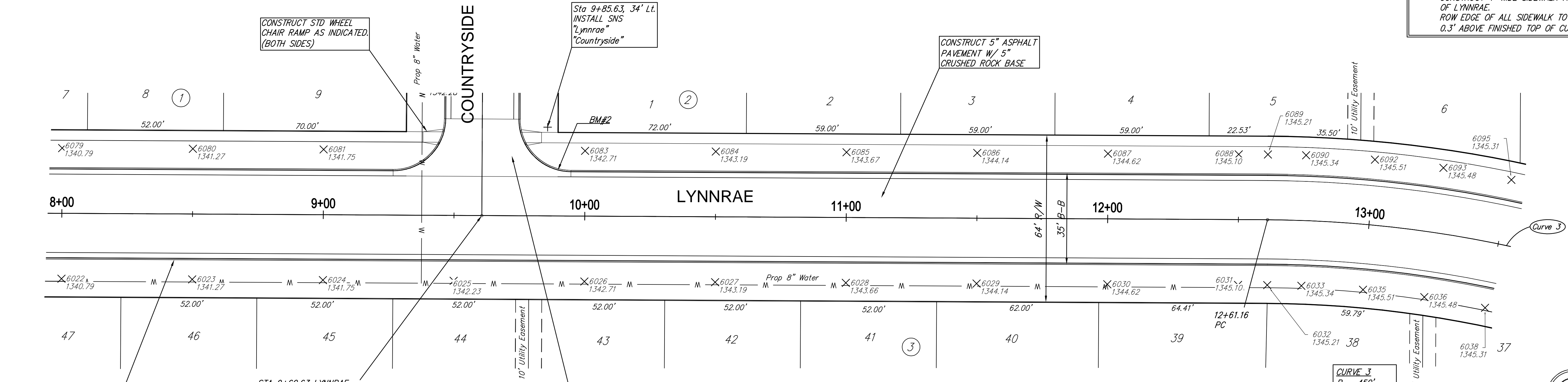


NOTE: STA 8+00 TO STA 13+50  
 CONSTRUCT 4' WIDE SIDEWALK ALONG NORTH SIDE  
 OF LYNNRAE.  
 ROW EDGE OF ALL SIDEWALK TO BE CONSTRUCTED  
 0.3' ABOVE FINISHED TOP OF CURB ELEVATION.



CONSTRUCT COMBINED ROLL  
 TYPE CURB AND GUTTER  
 (3 5/8\") BOTH SIDES

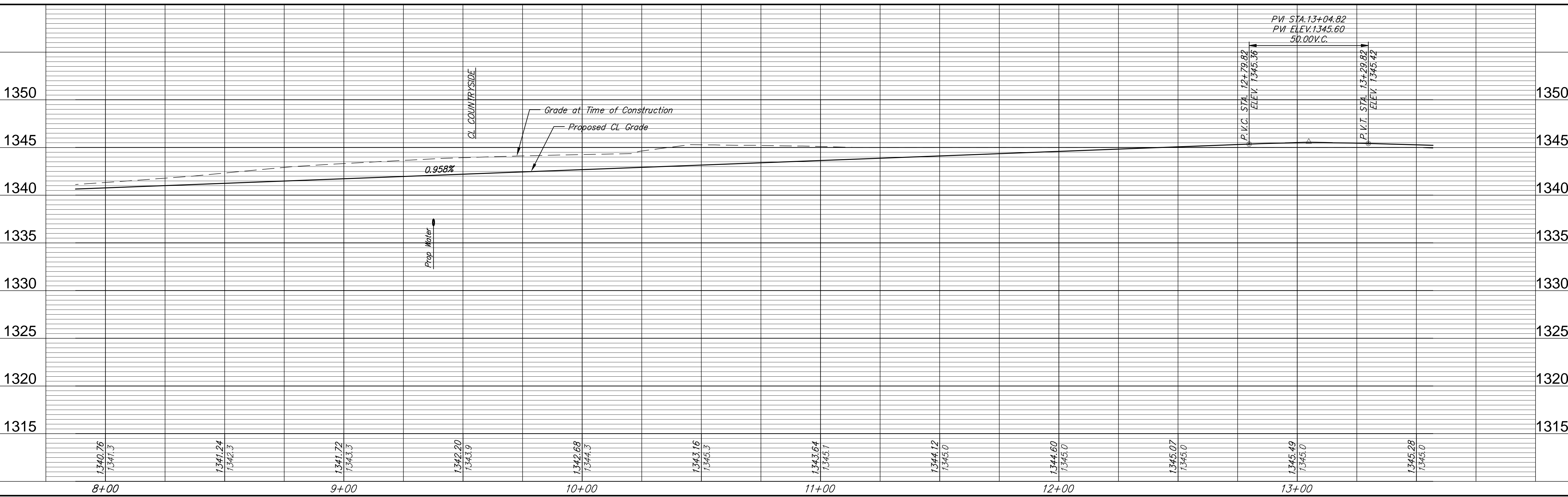
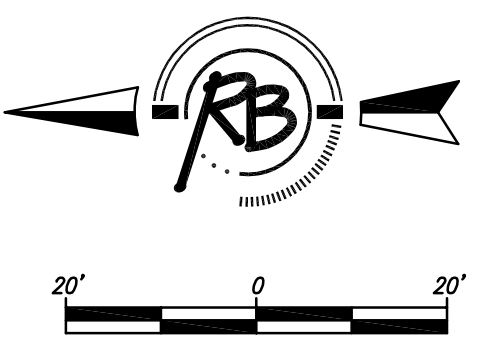
STA 9+60.63 LYNNRAE =  
 STA 30+00 COUNTRYSIDE

CONSTRUCT VALLEY GUTTER PAVEMENT.  
 7\"/>

Subdivision Bench Marks

No.	Street and Station	From CL	Description	Elevation
2	Lynnrae, Sta. 9+89.68	17.0' Lt.	S.E. End of Curb Return, Intersection of Lynnrae & Countryside	

CURVE 3  
 R = 450'  
 Δ = 12°18'4\"/>



RB JOB 3324E  
 SHEET 7 OF 35  
 DRAWING FILE Paving Base  
 PROJECT NUMBER 472-84764  
 DESIGN AML  
 DRAWN RLS  
 DATE 3/12/2008  
 REVIEW  
 REVIEW  
 RB  
 Russell & Bohm, P.A.  
 Engineering, Surveying, Land Planning  
 600 Main St., Suite 200  
 Wichita, Kansas 67202  
 (316) 264-4500  
 Email: info@rb.com  
 www.rb.com