

Siefkin Lane Paving

Willow Lane to Farmview Lane

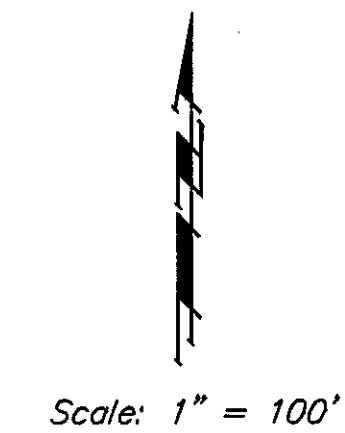
Project No. 472-84762 O.C.A. No. 766226

CITY OF WICHITA, KANSAS

James L. Armour, P.E. City Engineer

APRIL, 2009

Final Plans

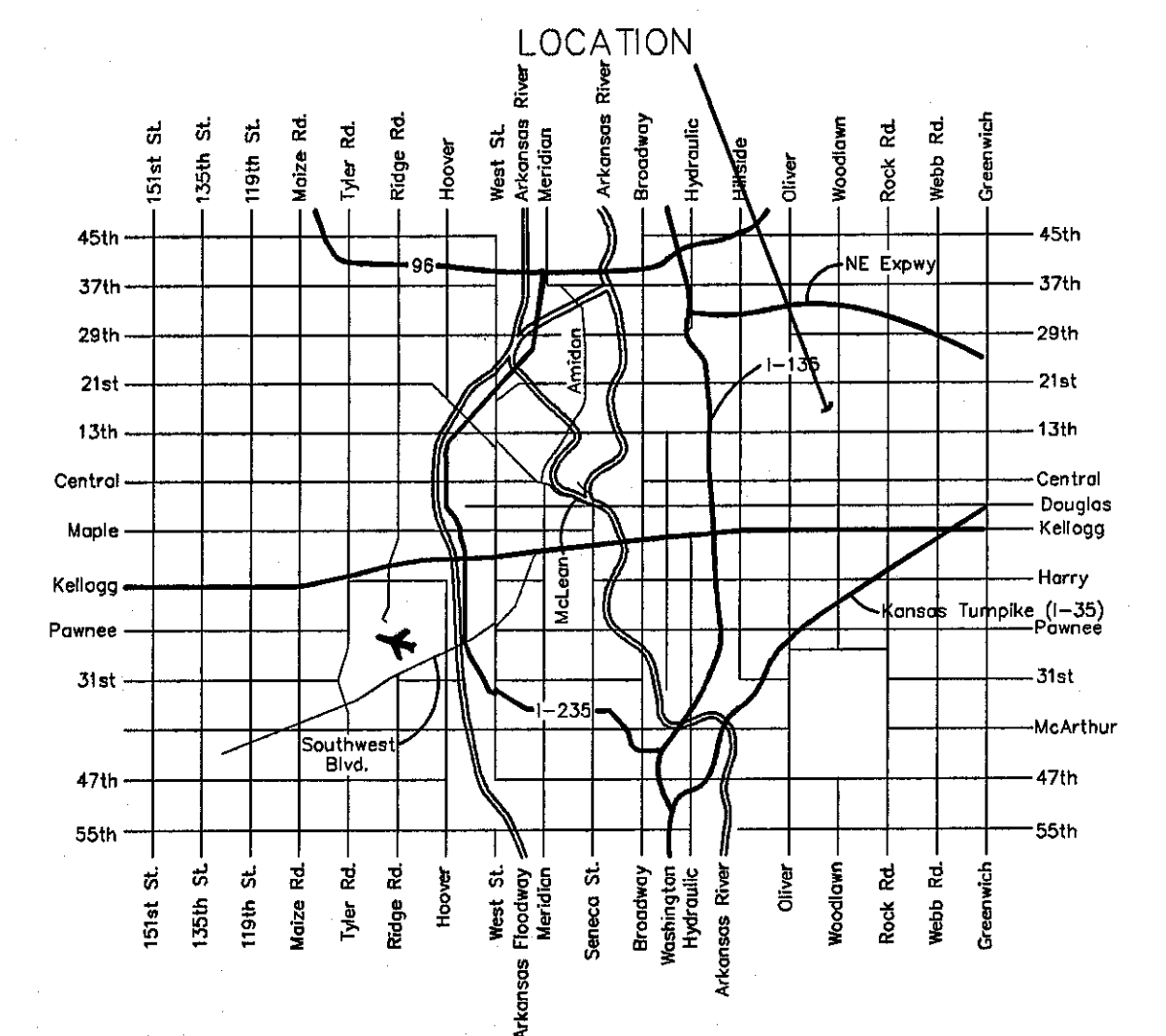
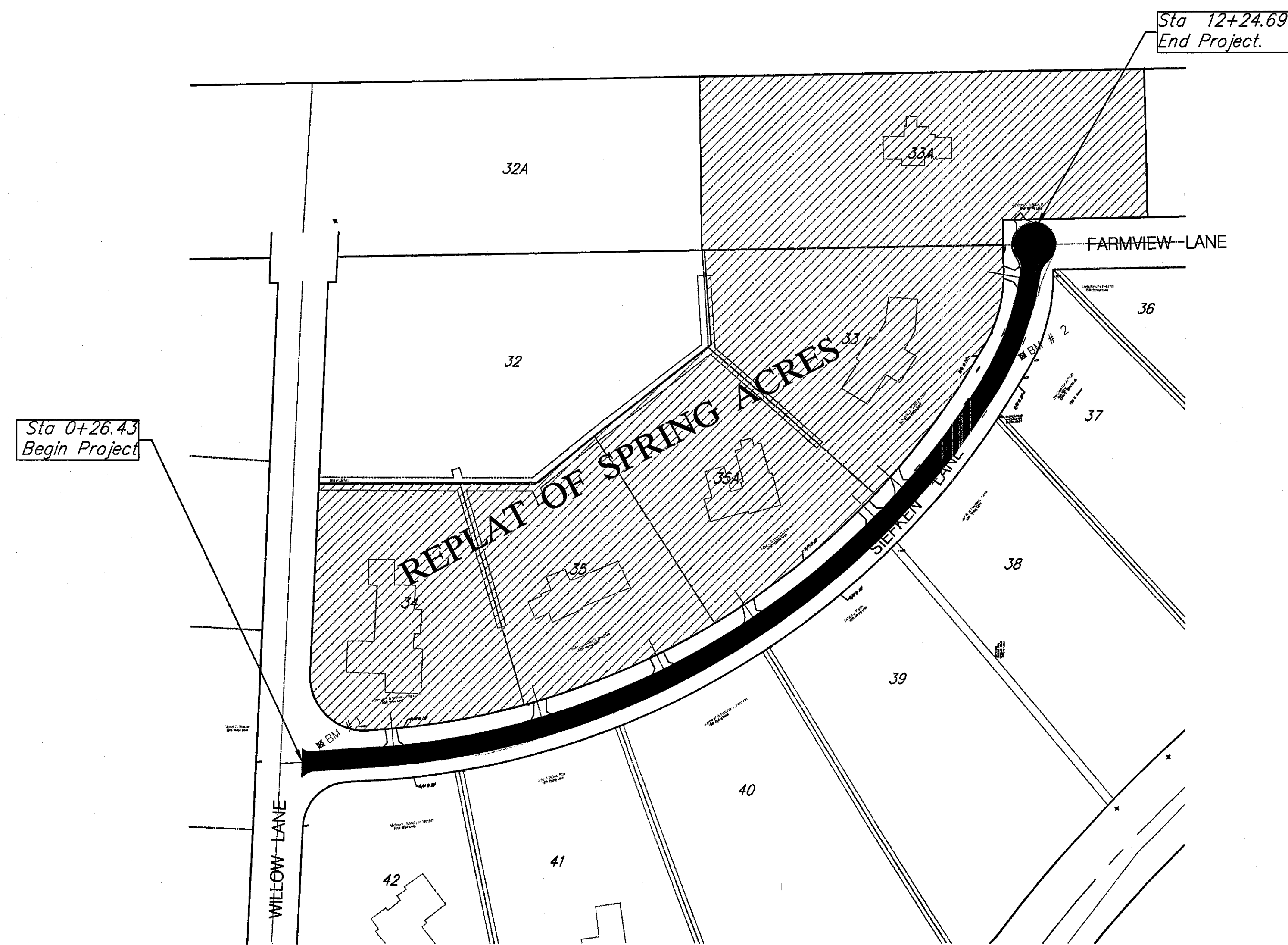


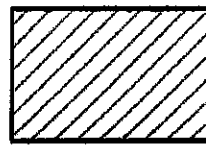

Benchmarks

- BM # 1 - "C" top of Hubguard of Soil Saver @ Northeast corner of Willow Lane & Siefkin Lane.
Elev. = 1402.92 (MSL Datum)
- BM # 2 - RR Spike on NW face of Light Pole 115' S. of the Southeast Property corner of Farmview Lane & Siefkin Lane.
Elev. = 1407.82 (MSL Datum)
- BM # 3 - City of Wichita Disc @ Southwest corner of Intersection of 17th Street North & Woodlawn Ave., 32' S. of C of 17th Street North & 4.3' W. of C of Woodlawn Ave.
Elev. = 1403.84 (MSL Datum)

Sheet Index

Title Sheet	1
General Notes	2
Typical Section	3
Plan	4-5
Erosion Control Plan	6
Erosion Control Details	7-10
Cross Sections	11-14



 Benefit District
 Construction

