

Private Project Storm Water Sewer
 Storm Water Sewer Improvements
 to serve
FRIENDS VILLAGE EAST
 CITY OF WICHITA, KANSAS

James L. Armour, P.E. City Engineer

Project Number

1922 PPS

O.C.A. Number

607861

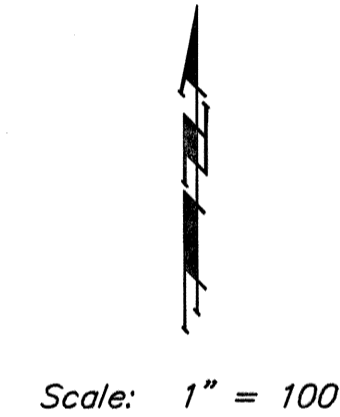
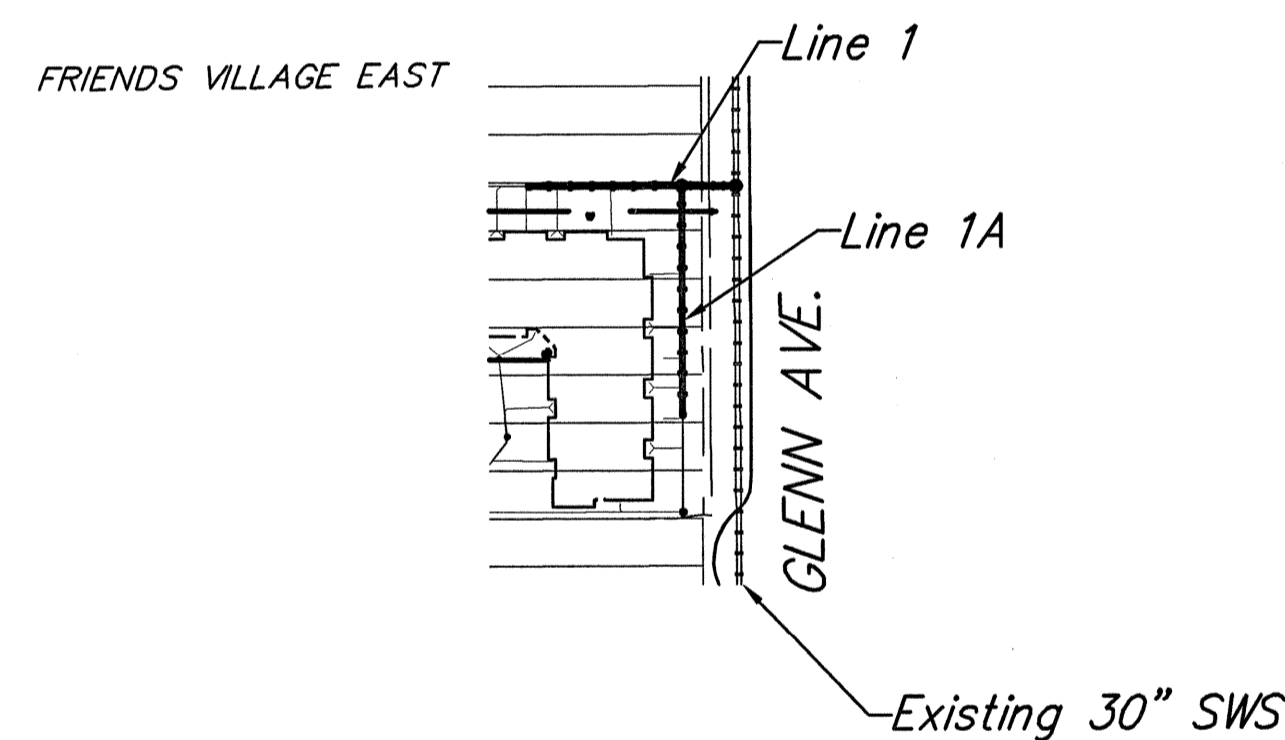
GENERAL NOTES:

- Contractor will be required to provide notice to utility companies a minimum of forty-eight (48) hours prior to any excavation, as follows:
 Kansas One-Call 687-2470
 The Contractor must notify the following in case of an emergency:
 Cox Communications 262-4270
 Kansas Gas Service 1-888-482-4950
 Westar Energy 383-8650
 Aquila Energy 1-888-492-4950
 SBC 268-2245
 City of Wichita Water Dept. 268-4563
 City of Wichita Sewer Maint. 268-4024
 City of Wichita Storm Sewer Maint. 268-4090
 City of Wichita Traffic Maint. 268-4034
- Underground utility service lines and overhead utility pole lines are to be adjusted as necessary by others prior to construction unless the plans specifically call for their adjustment by the Contractor or unless the plans specifically identify a utility to be adjusted by its owner during construction. Existing utilities and their location, as shown on the plans, represent the best information obtainable for design. The Contractor will be required to work around existing utilities within the right-of-way which do not conflict with proposed construction.
- Trees and shrubs in public right-of-way which are in direct conflict with proposed new construction shall be removed by the Contractor with the Engineer's approval. Trees and shrubs which are not in direct conflict with proposed new construction shall be saved and protected from damage.
- The Contractor shall give all property owners and/or tenants of developed property abutting the construction of this project a minimum of ten (10) days advance notice prior to start of construction.
- The Contractor shall be responsible for preserving property irons. The Contractor will be required to re-establish any property irons which are damaged or destroyed by his construction operations. Such irons shall be re-established by a licensed land surveyor in accordance with state laws.
- All excavation & trenching material shall be stockpiled or spread out on site as determined by the Engineer.
- All existing and proposed erosion control measures including silt fencing, erosion control mat, straw bales, inlet barriers, and const. entrance shall be maintained throughout construction by the contractor and until project is accepted by the City of Wichita. The on-site engineer shall complete weekly reports on the status of erosion control measures. The contractor shall be required to comply with maintenance and/or replacement of erosion control measures as determined by the on-site engineer and General Contractor until project is accepted by City of Wichita. Maintenance and/or replacement of erosion control measures to be coordinated with General Contractor. Contractor to coordinate Their Erosion Control Measures with the General Contractor for the entire site.
- All areas disturbed during construction shall be seeded at 300 lbs./acre with Rye Grass immediately following construction in that area. Contractor shall prepare ground per City Specifications.

Benchmarks

Site Benchmark - 1
 "C" Chiseled on Top of Curb on the Southwest corner of University and Hiram. Elev. 1295.42 (NGVD 29)

Site Benchmark - 2
 "C" Chiseled on top of Curb at the Mid-point of Glenn Avenue on the East side of street. Elev. 1295.22 (NGVD 29)



APPROVED AS NOTED
 BY CITY ENGINEER OF WICHITA

Sanitary Sewers _____

Storm Sewers Julianne Kallman 9-30-08

Driveway Approaches _____

Water Mains _____

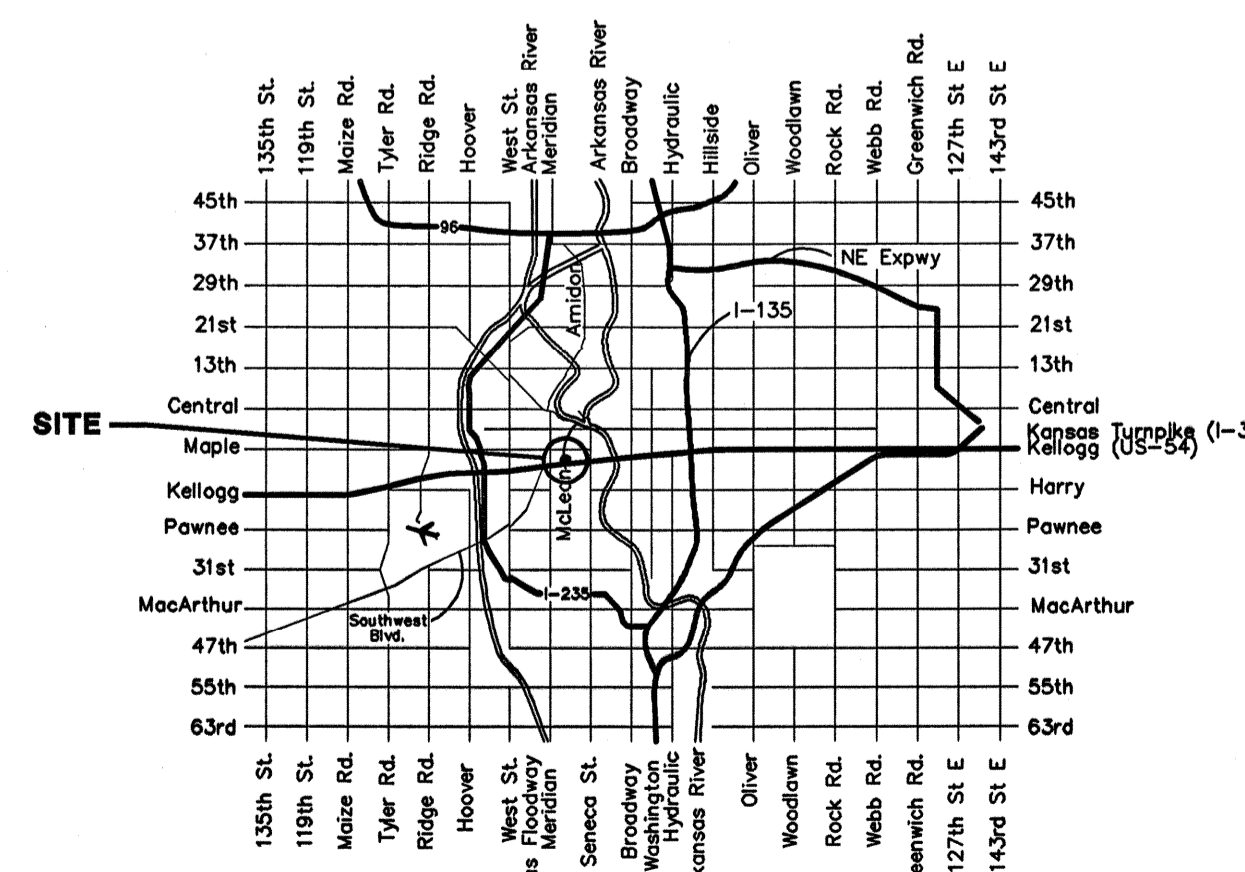
Paving _____

NOTE TO CONTRACTORS

Installation, inspection and testing for this project is to be provided by a Licensed Consulting Engineering Firm under contract with the Owner/Developer. Said inspection to be in accordance with the City of Wichita standard construction engineering practices and certified by a Licensed Professional Engineer. No work shall be performed in dedicated easements or public right-of-way by the Contractor without such inspection nor shall any work be commenced without written authorization by the City Engineer. All Construction and Materials shall comply with the City of Wichita Specifications and Standards (on file and available in the City Engineer's Office).

Sheet Index

Title Sheet	1
Line 1 & 1A	2
Manhole Ring and Cover Detail	3
Std. Manhole Detail	4
Std Shallow Manhole Detail	5



As Built Plans:

CONTRACTOR: McCullough Exc.
 INSPECTOR: Larry Gann
 COMPANY: K E Miller Engineering
 .PDF by: LG, 04/08/09

