

0 9.00 18 36ft

①

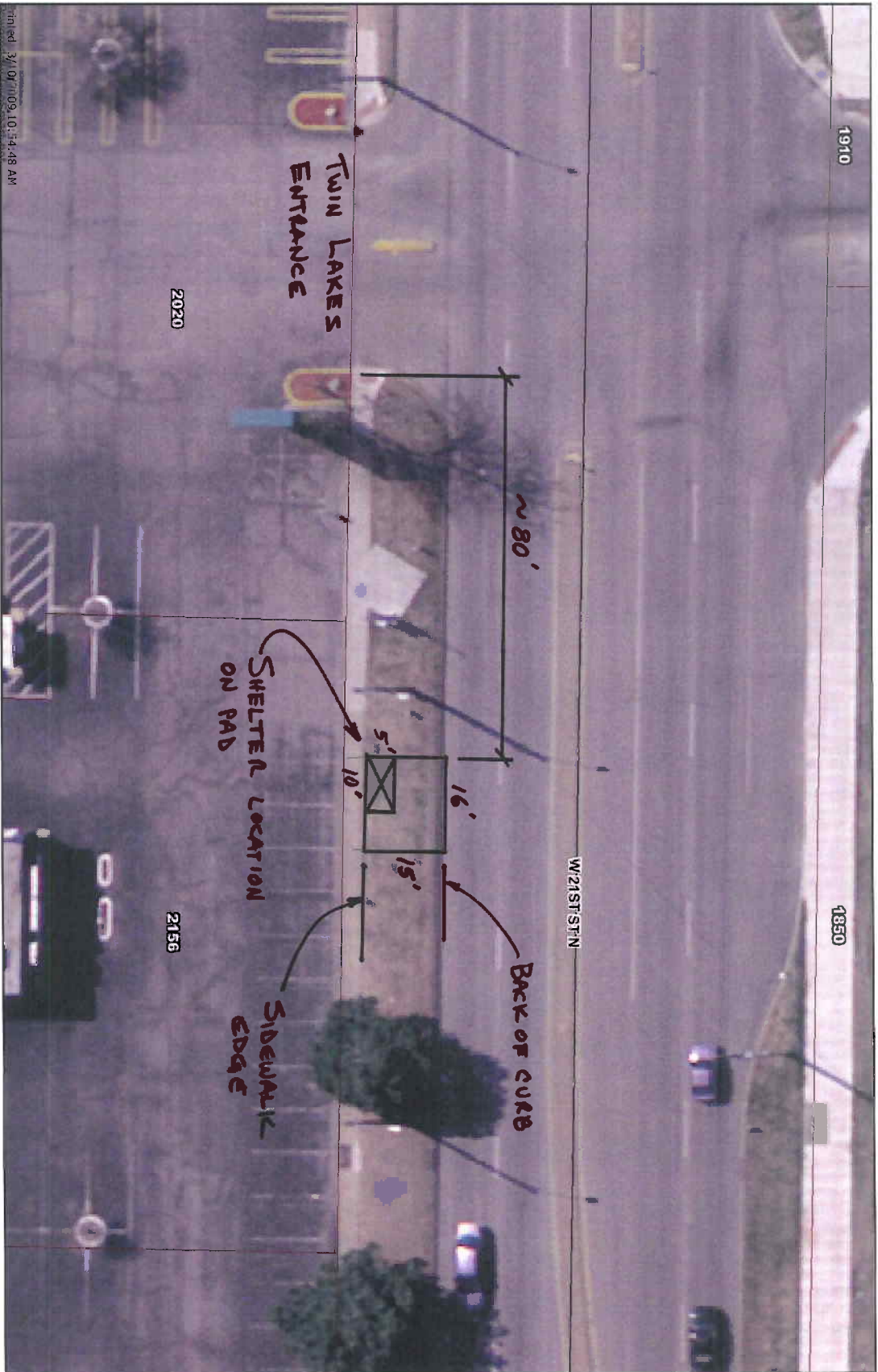
WEST KELLOGG DRIVE AT WAL-MART ENTRANCE

- City Limit Boundaries
- Property Parcels
- Parks
- Airports
- City Limits
- Small Cities
- Sedgewick County
- Wichita



Every reasonable effort has been made to assure the accuracy of the maps and associated data provided here. This information is provided with the understanding that the data are susceptible to a degree of error, and conditions shown from such information are the responsibility of the reader. The City of Wichita makes no warranty, representation or guaranty as to the content, accuracy, timeliness or completeness of any of the data provided herein. Some data provided here and used for the preparation of these maps has been obtained from public records and records or maintained by the City of Wichita. The City of Wichita shall assume no liability for any decisions made or actions taken or not taken by the reader in reliance upon any information or data furnished hereunder. This use should consult with the sponsor's department staff member, e.g. Planning, Parks & Recreation, etc. to confirm the accuracy of information appearing in the visual presentation accessible through these web pages.





City Limit boundaries

Property Parcels

Parks

Airports

City Limits

Small Cities

Sedgewick County

Wichita

②

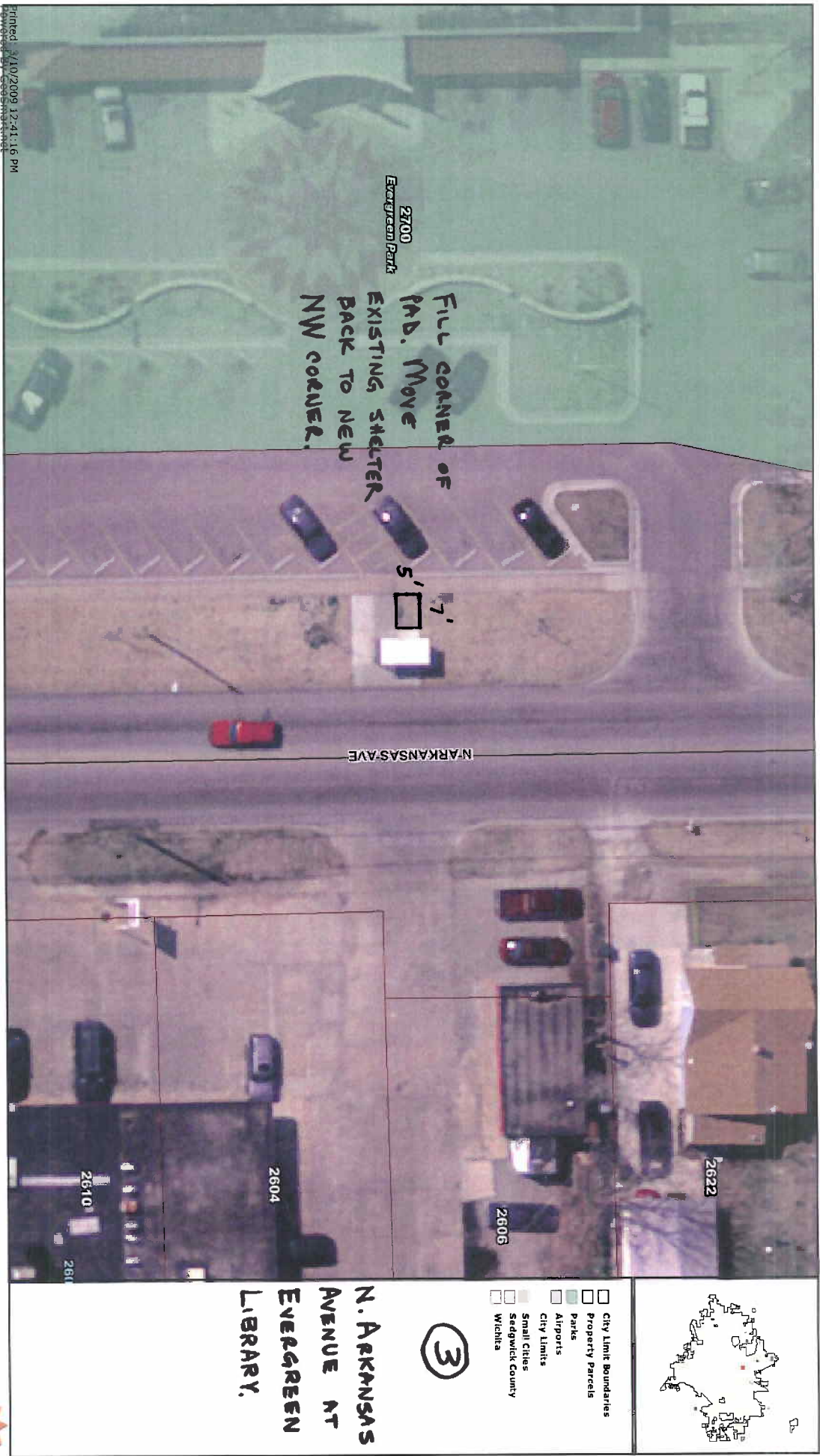
21ST ST. N.
AT TWIN
LAKES NORTH
ENTRANCE



Every reasonable effort has been made to assure the accuracy of the maps and associated data provided herein. This information is provided with the understanding that the data are susceptible to a degree of error, and considerations drawn from such information are the responsibility of the reader. The City of Wichita makes no warranty, representation or guarantee of quality as to the content, accuracy, timeliness or completeness of any of the data provided herein. Some data provided here and used for the preparation of these maps has been obtained from public records not created or maintained by the City of Wichita and may not be current. The City of Wichita and its employees, staff, consultants, vendors, and other personnel should consult with the appropriate departmental staff member, e.g., Planning, Public Works, Public Safety, etc., to confirm the accuracy of information appearing in the visual presentation accessible through these web pages.



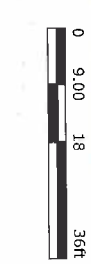
Printed: 3/1/07 10:09:10 AM 14:48 AM



Printed: 4/10/2009 12:41:16 PM



Every reasonable effort has been made to assure the accuracy of this map and associated data provided herein. This information is provided with the understanding that the data are susceptible to a degree of error and conclusions drawn from such information are the responsibility of the reader. The City of Wichita makes no warranty, representation or guaranty as to the content, accuracy, timeliness or completeness of any of the data provided herein. Some data provided here and used for the preparation of these maps has been obtained from public records not created or maintained by the City of Wichita. The City of Wichita is not responsible for any decisions made or actions taken or inaction by any reader or user of this information or data. For more information on data accuracy, please contact the City of Wichita, Planning & Information Services Department, 1000 S. Broadway, Wichita, KS 67202. Phone: 316-261-3000. Fax: 316-261-3001. E-mail: planning@cityofwichita.org. Website: www.cityofwichita.org

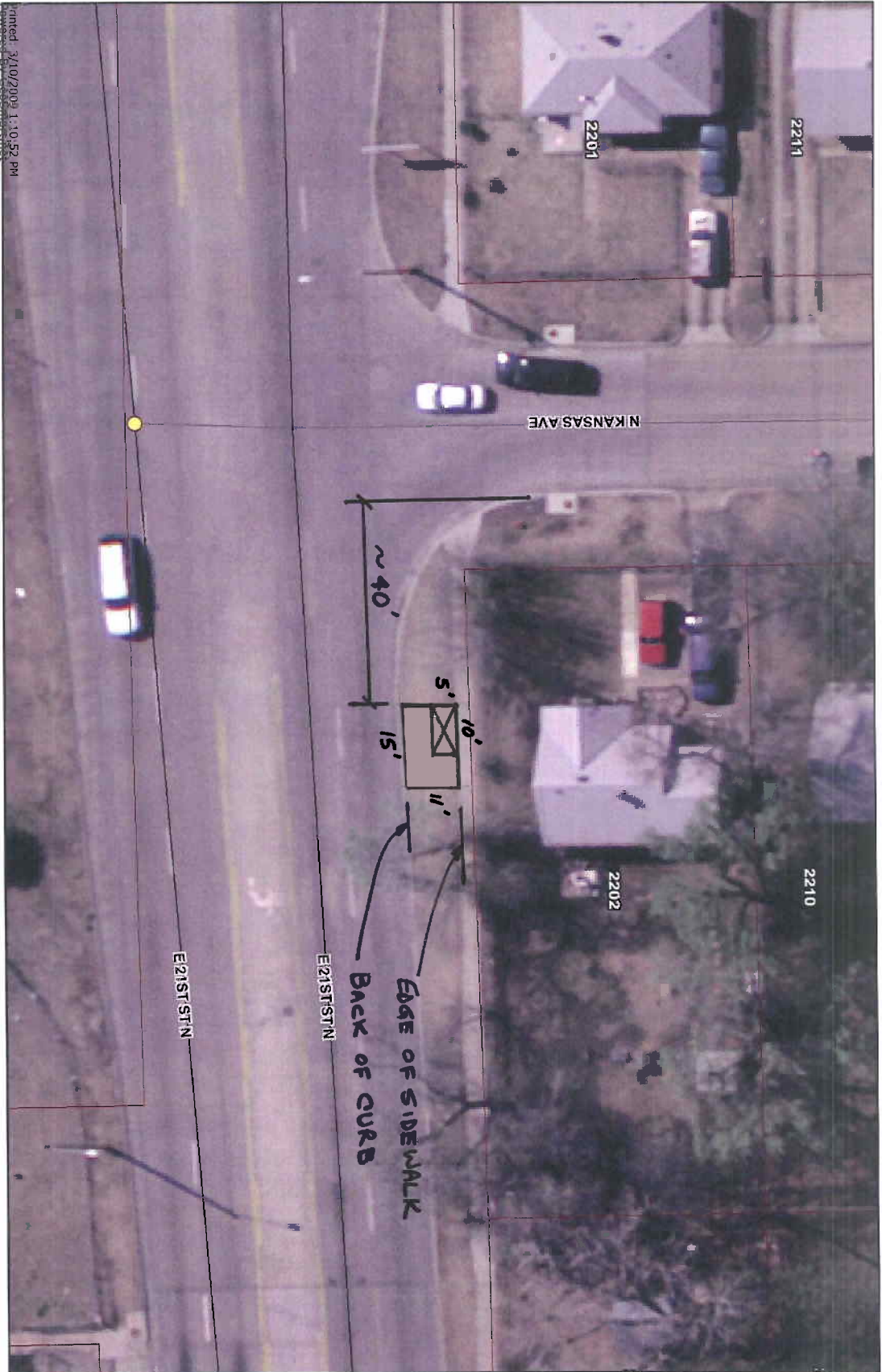


City Limit Boundaries
 Property Parcels
 Parks
 Airports
 City Limits
 Small Cities
 Sedgewick County
 Wichita

③

N. ARKANSAS AVENUE AT EVERGREEN LIBRARY.

2622
2606
2604
2610
261



City Limit Boundaries

Property Parcels

Parks

Airports

City Limits

Small Cities

Seawalk County

Wichita

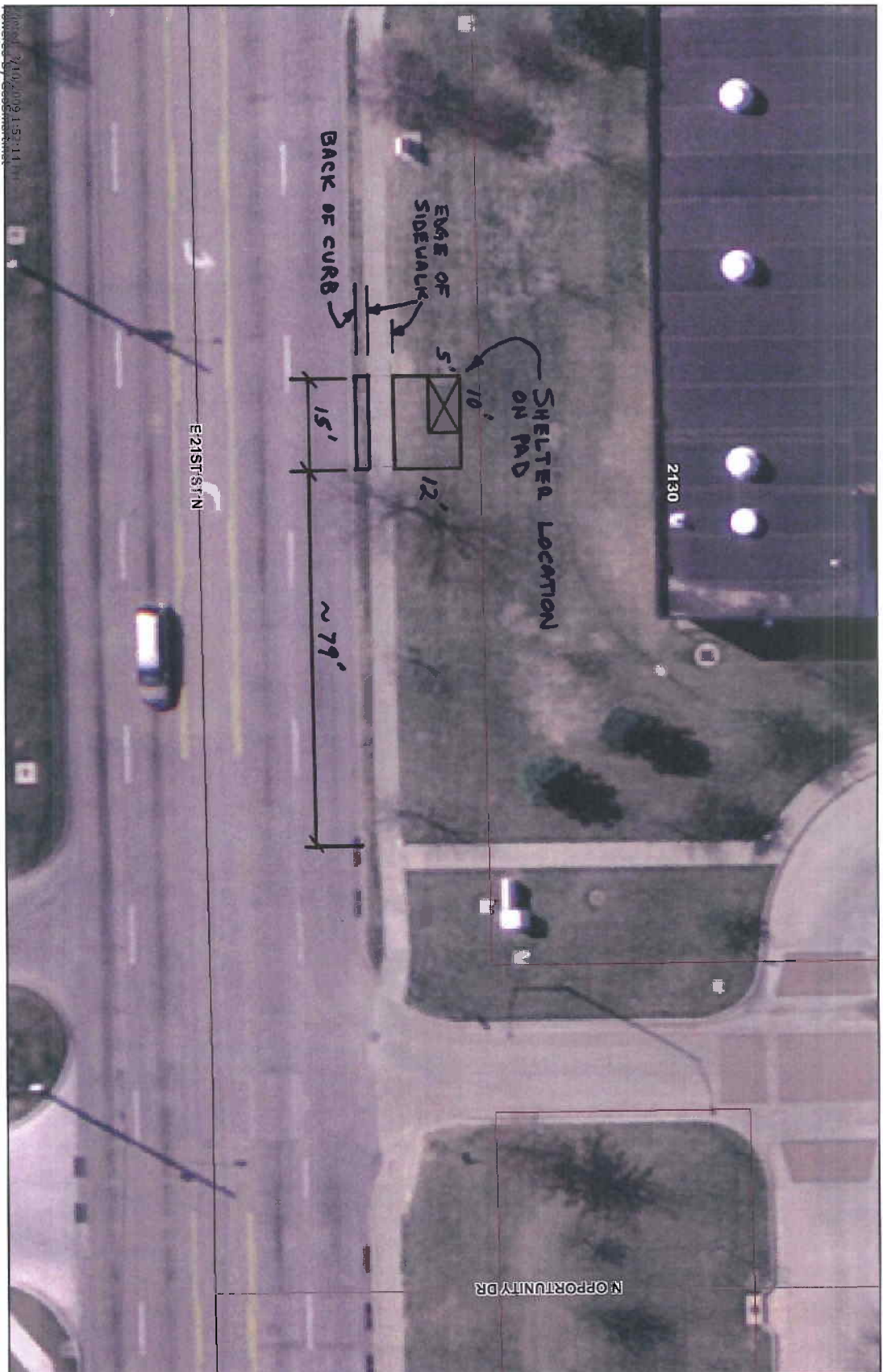
④

E. 21st St. N.
4T
N. Kansas Ave.

Printed: 3/10/2009 1:10:52 PM

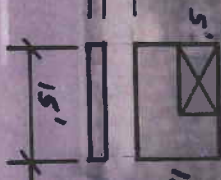
Every reasonable effort has been made to assure the accuracy of the maps and associated data provided herein. This information is provided with the understanding that the data are susceptible to a degree of error, and conclusions drawn from such information are the responsibility of the reader. The City of Wichita makes no warranty, representation or guarantee as to the content, accuracy, timeliness or completeness of any of the data provided herein. Some data provided here and used for the preparation of these maps has been obtained from public records not created or maintained by the City of Wichita. The City of Wichita shall assume no liability for any decisions made or actions taken or not taken by the reader in reliance upon any information or data furnished herein. The user should consult with the appropriate departmental staff member, e.g. Planning, Parks & Recreation, etc. to confirm the accuracy of information appearing in the visual presentation accessible through these web pages.





SHELTER LOCATION ON PAD

EDGE OF SIDEWALK
BACK OF CURB



~ 79'

E 21ST ST N

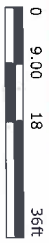
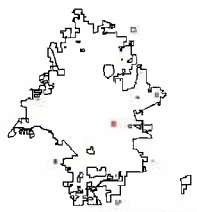
2130

OPPORTUNITY DR

City Limit Boundaries
Property Parcels
Parks
Airports
City Limits
Small Cities
Sedgewick County
Wichita

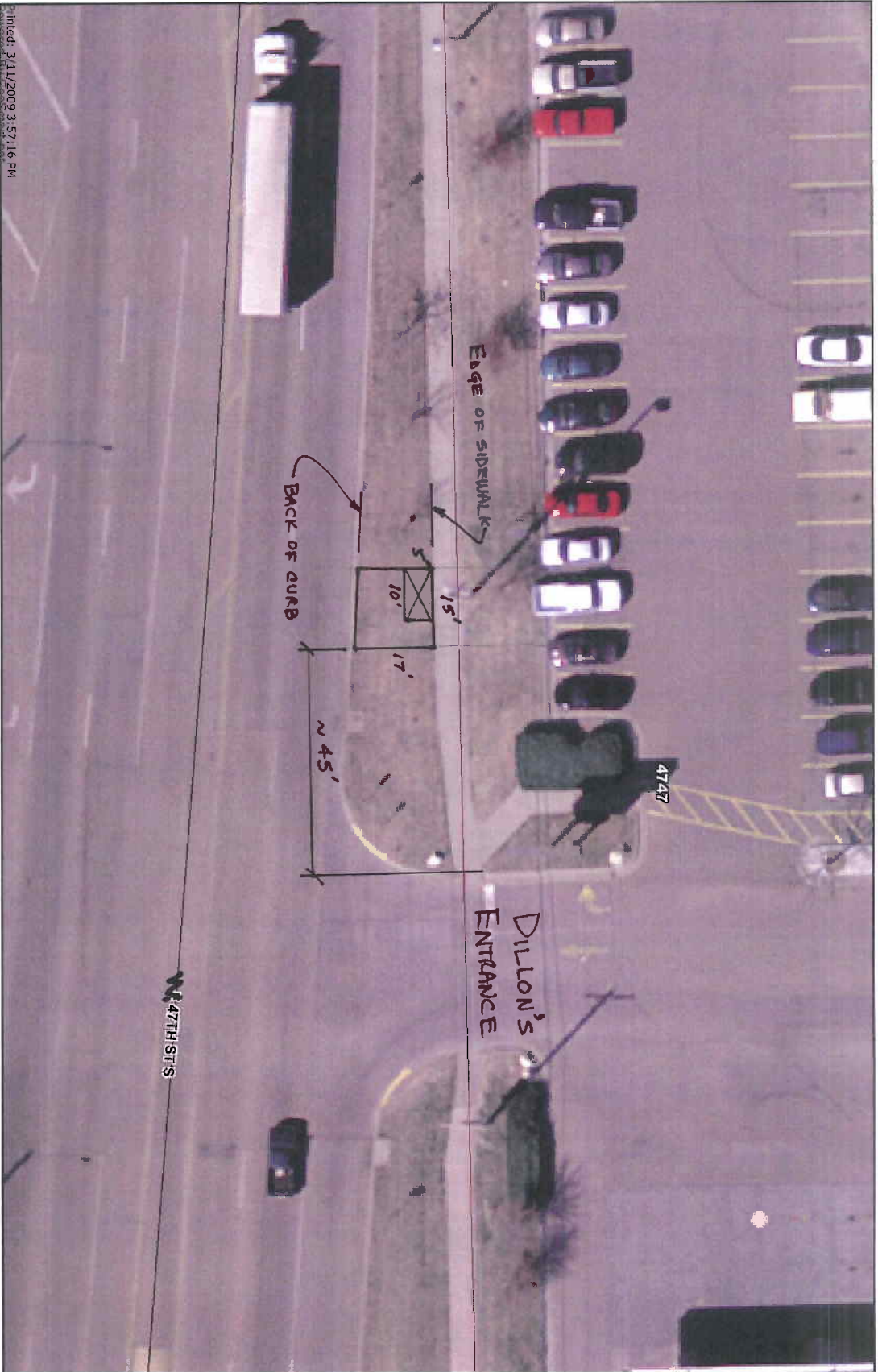
⑤

E. 21st St. N.
AT
Opportunity Dr.



Every reasonable effort has been made to assure the accuracy of the maps and associated data provided herein. This information is provided with the understanding that the data are susceptible to a degree of error, and conditions drawn from such information are the responsibility of the reader. The City of Wichita makes no warranty, representation or guaranty as to the content, accuracy, timeliness or completeness of any of the data provided herein. Some data provided here and used in the preparation of these maps have been obtained from public records not created or maintained by the City of Wichita. The City of Wichita and its employees shall not be liable for any errors or omissions in any data provided herein. It is the responsibility of the user to confirm the accuracy of information appearing in the visual presentations accessible through these web pages. Planning and Research, s.t.s. to confirm the accuracy of information appearing in the visual presentations accessible through these web pages.





City Limit Boundaries

Property Parcels

Parks

Airports

City Limits

Small Cities

Sedgewick County

Wichita

⑨

S. BROADWAY

AT

E. 47th ST. S.

(DILLON'S ENTRANCE)



Every reasonable effort has been made to assure the accuracy of the maps and associated data provided herein. This information is provided with the understanding that the data are susceptible to a degree of error, and conclusions drawn from such information are the responsibility of the reader. The City of Wichita makes no warranty, representation or guarantee as to the content, accuracy, timeliness or completeness of any of the data provided herein. Some data provided here are used for the preparation of these maps has been obtained from public records not created or maintained by the City of Wichita. The City of Wichita shall assume no liability for any decisions made by users of this information. This information is provided for informational purposes only. It is not intended to be used as a substitute for professional advice. For more information, please contact the City of Wichita, Department of Planning, 615 North Lincoln Street, Wichita, KS 67202. Printed: 3/11/2009 3:57:16 PM

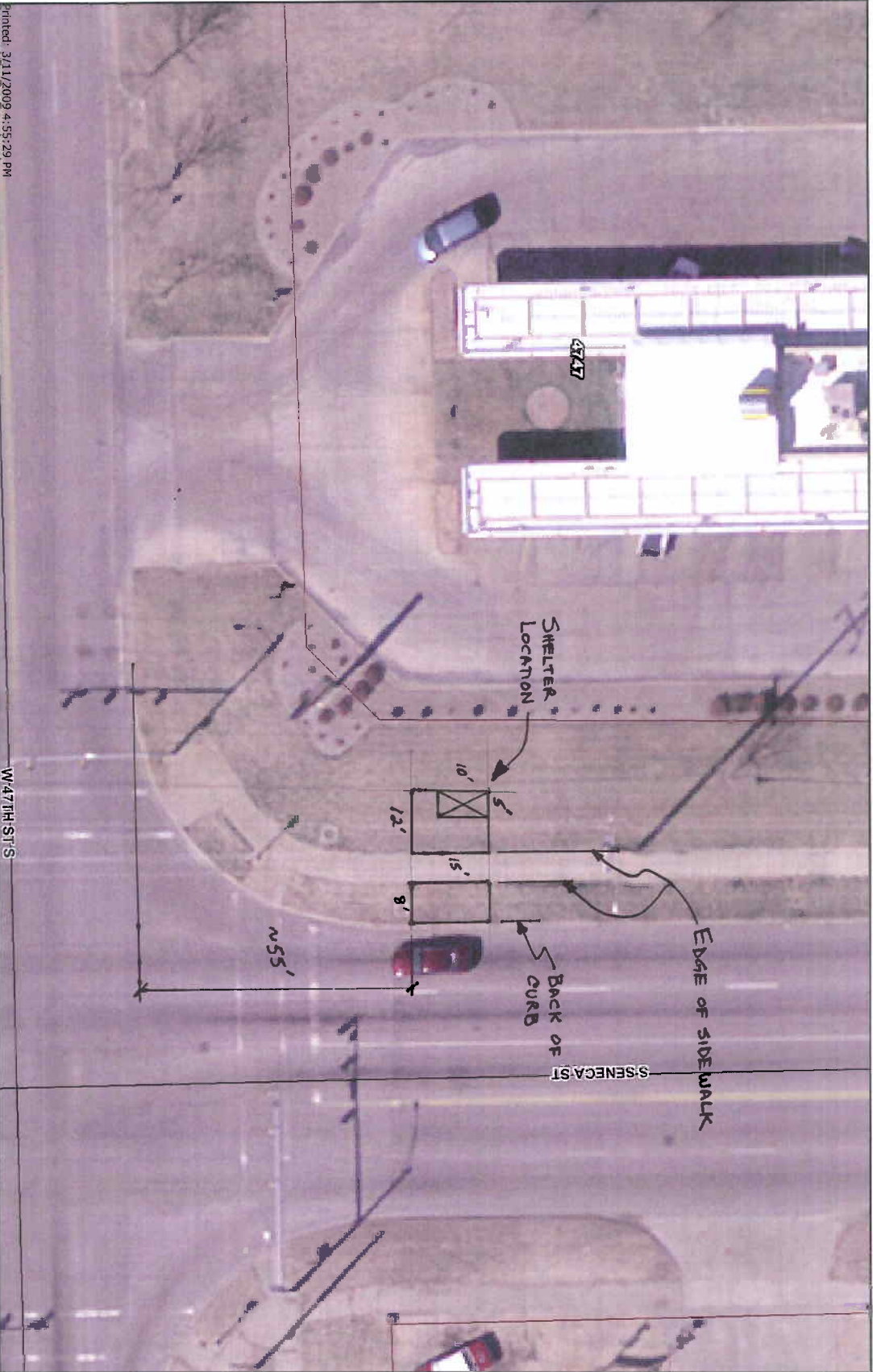




Every reasonable effort has been made to assure the accuracy of the maps and associated data provided herein. The information is provided with the understanding that the data are susceptible to a degree of error, and conclusions drawn from such information are the responsibility of the reader. The City of Wichita makes no warranty, representation or guarantee as to the content, accuracy, timeliness or completeness of any of the data provided herein. Some data provided here are obtained by the program in reliance on information or data furnished by third parties. The user should consult with the appropriate departmental staff member, e.g. Planning, Public & Recreation, etc. to confirm the accuracy of information appearing in the visual presentations accessible through these web pages.

W47TH ST S

0 9.00 18 36ft



- City Limit Boundaries
- Property Parcels
- Parks
- Airports
- City Limits
- Small Cities
- Sedgewick County
- Wichita

10

W. 47th St. S.

AT

SOUTH SENECA

