

**BENCHMARKS:**  
 BM #1: "□" CUT ON TOP OF CURB,  
 SOUTH END OF MEDIAN, LAKECREST  
 DR. & CENTRAL AVE.  
 ELEV. = 1332.74 NGVD29

BM #2: "□" CUT ON THE TOP OF  
 CURB ON THE EAST SIDE OF  
 LAKECREST CIRCLE, APPROXIMATELY  
 46.3 FEET SE OF THE NE CORNER OF  
 LOT 1, BLOCK D, CRESCENT LAKES  
 ADDITION - FIFTH PHASE, ANDOVER,  
 KS.  
 ELEV. = 1331.50 NGVD29

Nearest existing valve is  
 ~465' west at  
 intersection of Woodstone  
 Drive & Crescent Lakes  
 Drive.

WL Sta 0+04.24, Line 1  
 = BL Sta 0+02.82, 30' Lt.  
 1 - 8" CIMJ 45° Bend  
 4.24 L.F. 8" DICL Pipe  
 WL Sta 0+00, Begin Line 1  
 = BL Sta 0-00.18, 27' Lt.  
 Remove existing blowoff  
 assembly and extend pipe  
 northeast.  
 1 - 8" CIMJ 45° Bend

WL Sta 1+51.24, Line 1  
 = WL Sta 0+00, Lines 1A&1B  
 = BL Sta 1+49.81, 30' Lt.  
 1 - 8"x8" Cross  
 1 - 8" Anch. Valve Assy. (N)  
 (Special) (Gate Valve)  
 2 - 8" Anch. Valve Assy. (S,E)  
 (Gate Valve)  
 Valve Box Elev. = 1333.90  
 1 - 8" CIMJ 45° Bend (V)  
 Deflect Pipe 2'52'44" Rt.

Valve (N.) Located:  
 • 13' E. and 8' N. of MH  
 Valve (E.) Located:  
 • 17' E. and 7' N. of MH  
 Valve (S.) Located:  
 • 13' E. and 5' N. of MH

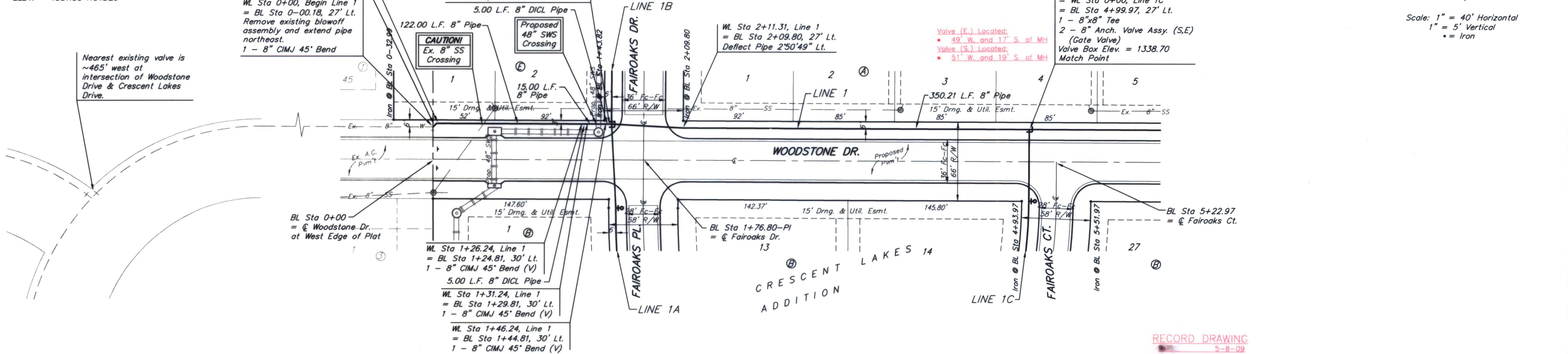
BL = CL WOODSTONE DR.

WL Sta 2+11.31, Line 1  
 = BL Sta 2+09.80, 27' Lt.  
 Deflect Pipe 2'50'49" Lt.

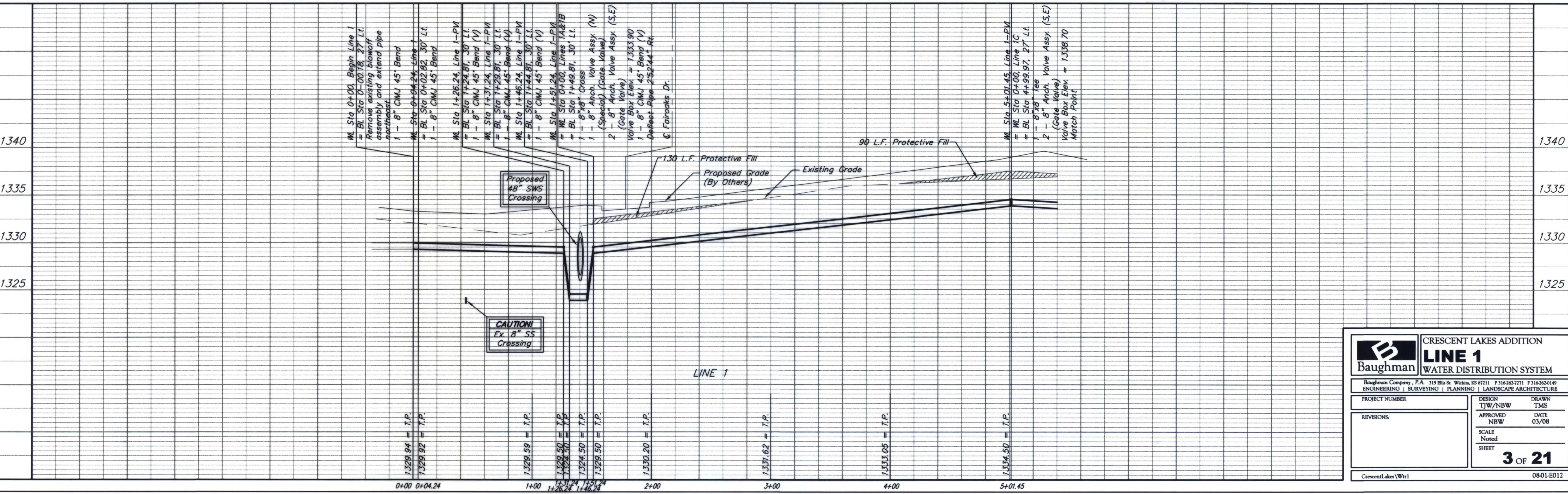
Valve (E.) Located:  
 • 49' W. and 17' S. of MH  
 Valve (S.) Located:  
 • 51' W. and 19' S. of MH

WL Sta 5+01.45, Line 1  
 = WL Sta 0+00, Line 1C  
 = BL Sta 4+99.97, 27' Lt.  
 1 - 8"x8" Tee  
 2 - 8" Anch. Valve Assy. (S,E)  
 (Gate Valve)  
 Valve Box Elev. = 1338.70  
 Match Point

Scale: 1" = 40' Horizontal  
 1" = 5' Vertical  
 • = Iron



RECORD DRAWING  
 5-8-09



		CRESCENT LAKES ADDITION	
		<b>LINE 1</b>	
		WATER DISTRIBUTION SYSTEM	
<small>Baughman Company, P.A. 315 Ellis St. Wichita, KS 67211 P 316-262-7271 F 316-262-0149        ENGINEERING   SURVEYING   PLANNING   LANDSCAPE ARCHITECTURE</small>			
PROJECT NUMBER	DESIGN	TJW/NBW	DRAWN
	APPROVED	NBW	TMS
REVISIONS:			DATE
			03/08
	SCALE	Noted	
	SHEET	3 OF 21	
CrescentLakes\Wtr1		0801E012	