

BENCHMARKS:
 BM #1: "□" CUT ON TOP OF CURB, SOUTH END OF MEDIAN, LAKECREST DR. & CENTRAL AVE. ELEV. = 1332.74 NGVD29
 BM #2: "□" CUT ON THE TOP OF CURB ON THE EAST SIDE OF LAKECREST CIRCLE, APPROXIMATELY 46.3 FEET SE OF THE NE CORNER OF LOT 1, BLOCK D, CRESCENT LAKES ADDITION - FIFTH PHASE, ANDOVER, KS. ELEV. = 1331.50 NGVD29

Curve #1
 Curve Data Based on Waterline
 Rad. = 647.36' Delta = 6° 50' 43" Tangent = 38.72'
 Arc = 77.34' L.C. = 77.30' Def/Ft. = 2.65527 Min.

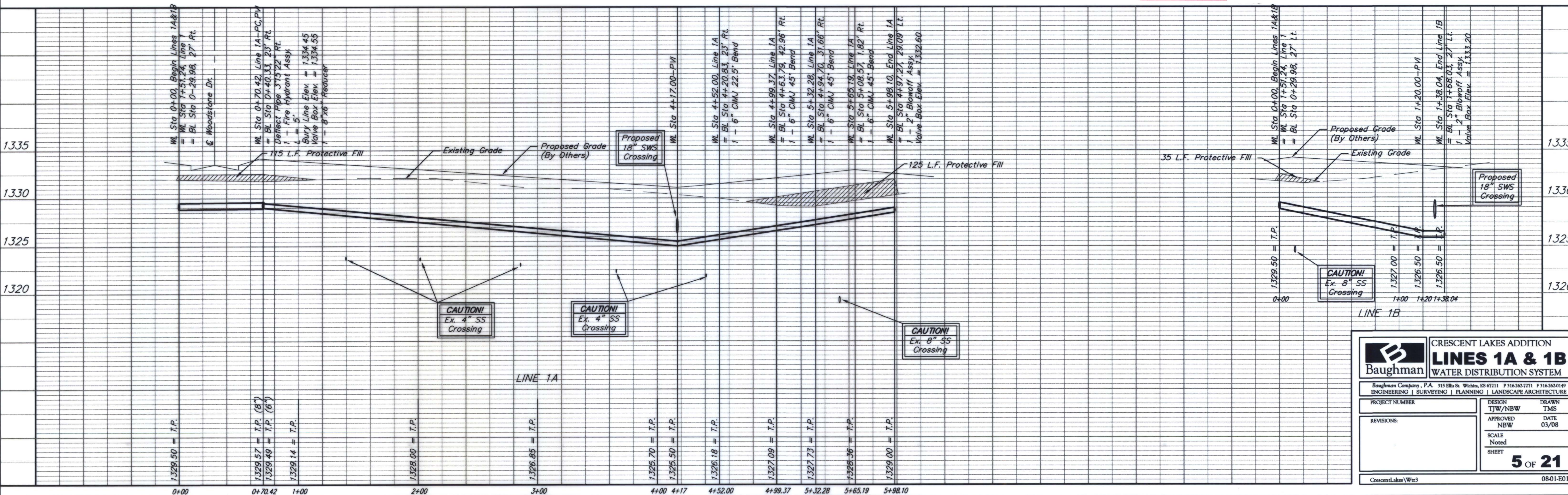
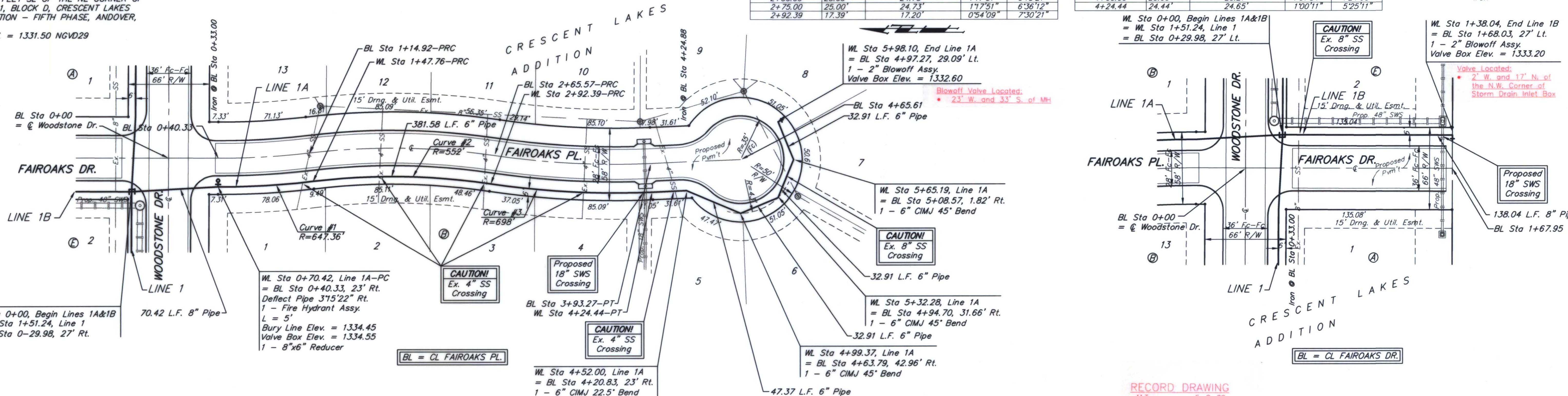
Station	Arc	6" Rt.	Defl.	T. Defl.
0+70.42	-	-	0'00"00"	0'00"00"
0+75.00	4.58'	4.62'	0'12"09"	0'12"09"
1+00.00	25.00'	25.23'	1'06"23"	1'18"32"
1+25.00	25.00'	25.23'	1'06"23"	2'24"55"
1+47.76	22.76'	22.97'	1'00"26"	3'25"21"

Curve #2
 Curve Data Based on Waterline
 Rad. = 552' Delta = 13'00' 42" Tangent = 72.73'
 Arc = 144.63' L.C. = 144.21' Def/Ft. = 3.11381 Min.

Station	Arc	6" Rt.	Defl.	T. Defl.
1+47.76	-	-	0'00"00"	0'00"00"
1+50.00	2.24'	2.22'	0'06"58"	0'06"58"
1+75.00	25.00'	24.73'	1'17"51"	1'24"49"
2+00.00	25.00'	24.73'	1'17"51"	2'42"40"
2+25.00	25.00'	24.73'	1'17"51"	4'00"30"
2+50.00	25.00'	24.73'	1'17"51"	5'18"21"
2+75.00	25.00'	24.73'	1'17"51"	6'36"12"
2+92.39	17.39'	17.20'	0'54"09"	7'30"21"

Curve #3
 Curve Data Based on Waterline
 Rad. = 698' Delta = 10' 50' 22" Tangent = 66.22'
 Arc = 132.05' L.C. = 131.85' Def/Ft. = 2.46258 Min.

Station	Arc	6" Rt.	Defl.	T. Defl.
2+92.39	-	-	0'00"00"	0'00"00"
3+00.00	7.61'	7.68'	0'18"44"	0'18"44"
3+25.00	25.00'	25.21'	1'01"34"	1'20"18"
3+50.00	25.00'	25.21'	1'01"34"	2'21"52"
3+75.00	25.00'	25.21'	1'01"34"	3'23"26"
4+00.00	25.00'	25.21'	1'01"34"	4'24"60"
4+24.44	24.44'	24.65'	1'00"11"	5'25"11"



Baughman CRESCENT LAKES ADDITION
LINES 1A & 1B
 WATER DISTRIBUTION SYSTEM

Baughman Company, P.A. 315 Ellis St. Wichita, KS 67211 P 316.262.7271 F 316.262.8149
 ENGINEERING | SURVEYING | PLANNING | LANDSCAPE ARCHITECTURE

PROJECT NUMBER	DESIGN	DRAWN
	TJW/NBW	TMS
REVISIONS:	APPROVED	DATE
	NBW	03/08
	SCALE	
	Noted	
	SHEET	
	5 OF 21	

CrescentLakes/Wtr3 08-01-E012

RECORD DRAWING
 M.T. 5-8-09