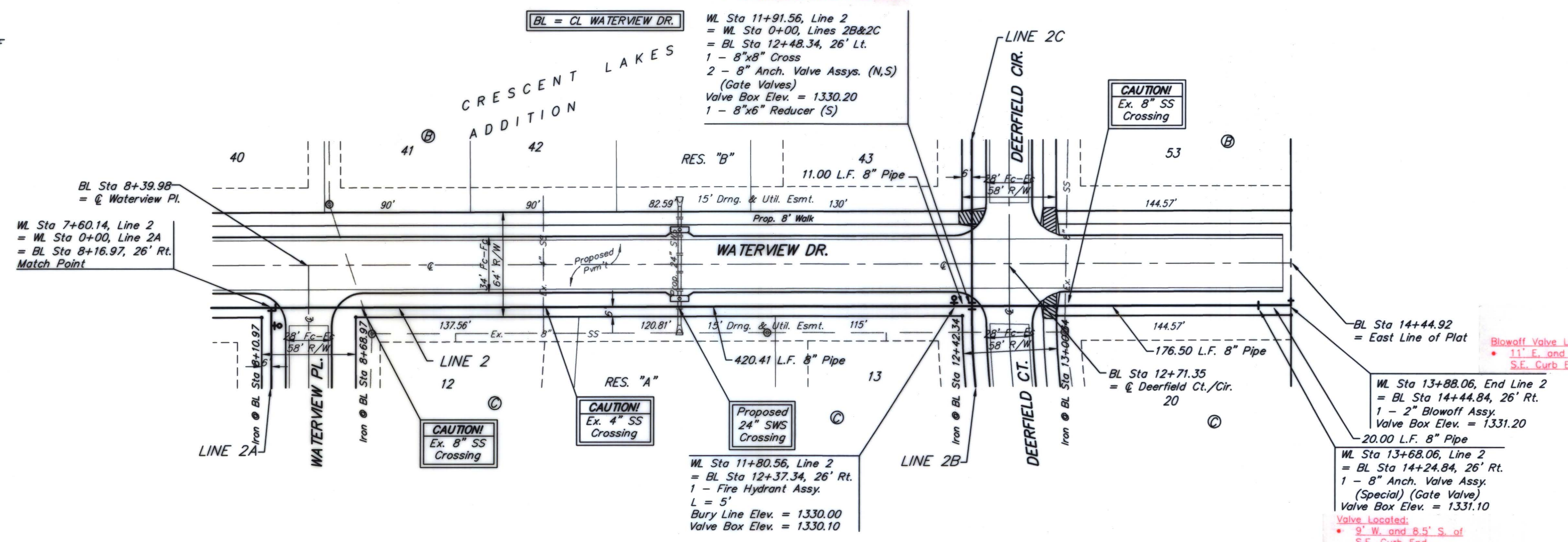


**BENCHMARKS:**  
 BM #1: "□" CUT ON TOP OF CURB, SOUTH END OF MEDIAN, LAKECREST DR. & CENTRAL AVE.  
 ELEV. = 1332.74 NGVD29

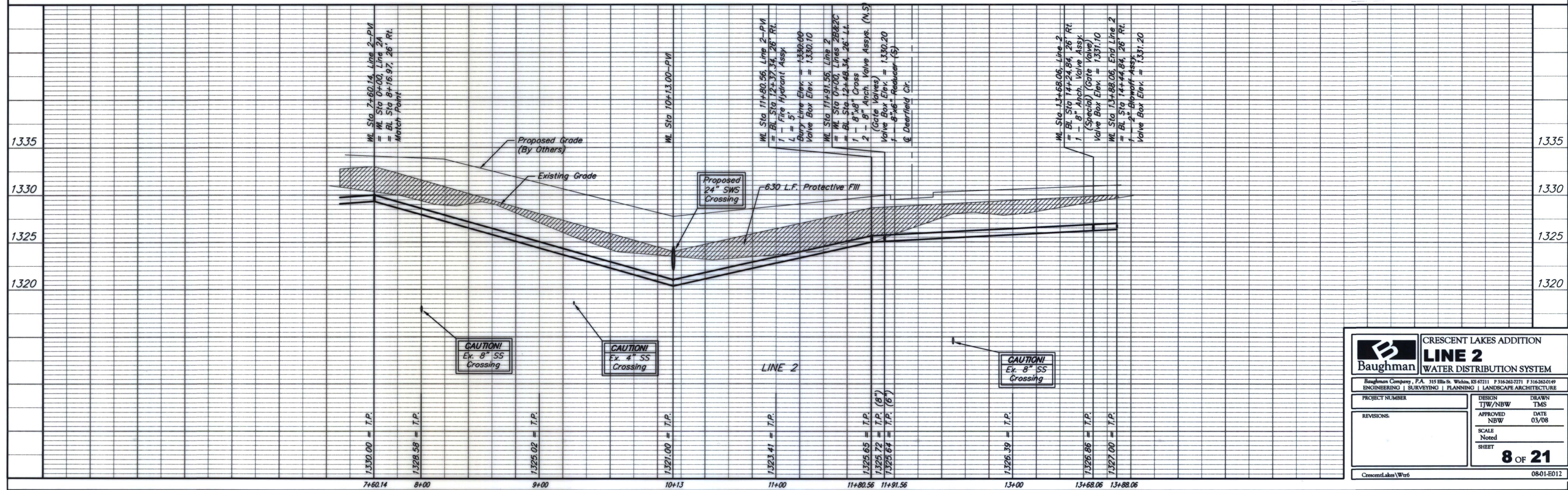
BM #2: "□" CUT ON THE TOP OF CURB ON THE EAST SIDE OF LAKECREST CIRCLE, APPROXIMATELY 46.3 FEET SE OF THE NE CORNER OF LOT 1, BLOCK D, CRESCENT LAKES ADDITION - FIFTH PHASE, ANDOVER, KS.  
 ELEV. = 1331.50 NGVD29

Valve (N.) Located:  
 • 9' E. and 3' S. of Fire Hydrant  
 Valve (S.) Located:  
 • 9' E. and 6' S. of Fire Hydrant

Scale: 1" = 40' Horizontal  
 1" = 5' Vertical  
 • = Iron



RECORD DRAWING  
 M.T. 5-8-09



		CRESCENT LAKES ADDITION	
		<b>LINE 2</b>	
		WATER DISTRIBUTION SYSTEM	
<small>Baughman Company, P.A. 315 Ellis St. Wichita, KS 67211 F 316-363-2171 F 316-363-0149        ENGINEERING   SURVEYING   PLANNING   LANDSCAPE ARCHITECTURE</small>			
PROJECT NUMBER	DESIGN	TJW/NBW	DRAWN
			TMS
REVISIONS	APPROVED	NBW	DATE
			03/08
	SCALE	Noted	
	SHEET	8 OF 21	
CrescentLakes\Wat6		0801-E012	