

**BENCHMARKS:**  
 BM #1: "□" CUT ON TOP OF CURB,  
 SOUTH END OF MEDIAN, LAKECREST  
 DR. & CENTRAL AVE.  
 ELEV. = 1332.74 NGVD29

BM #2: "□" CUT ON THE TOP OF  
 CURB ON THE EAST SIDE OF  
 LAKECREST CIRCLE, APPROXIMATELY  
 46.3 FEET SE OF THE NE CORNER OF  
 LOT 1, BLOCK D, CRESCENT LAKES  
 ADDITION - FIFTH PHASE, ANDOVER,  
 KS.  
 ELEV. = 1331.50 NGVD29

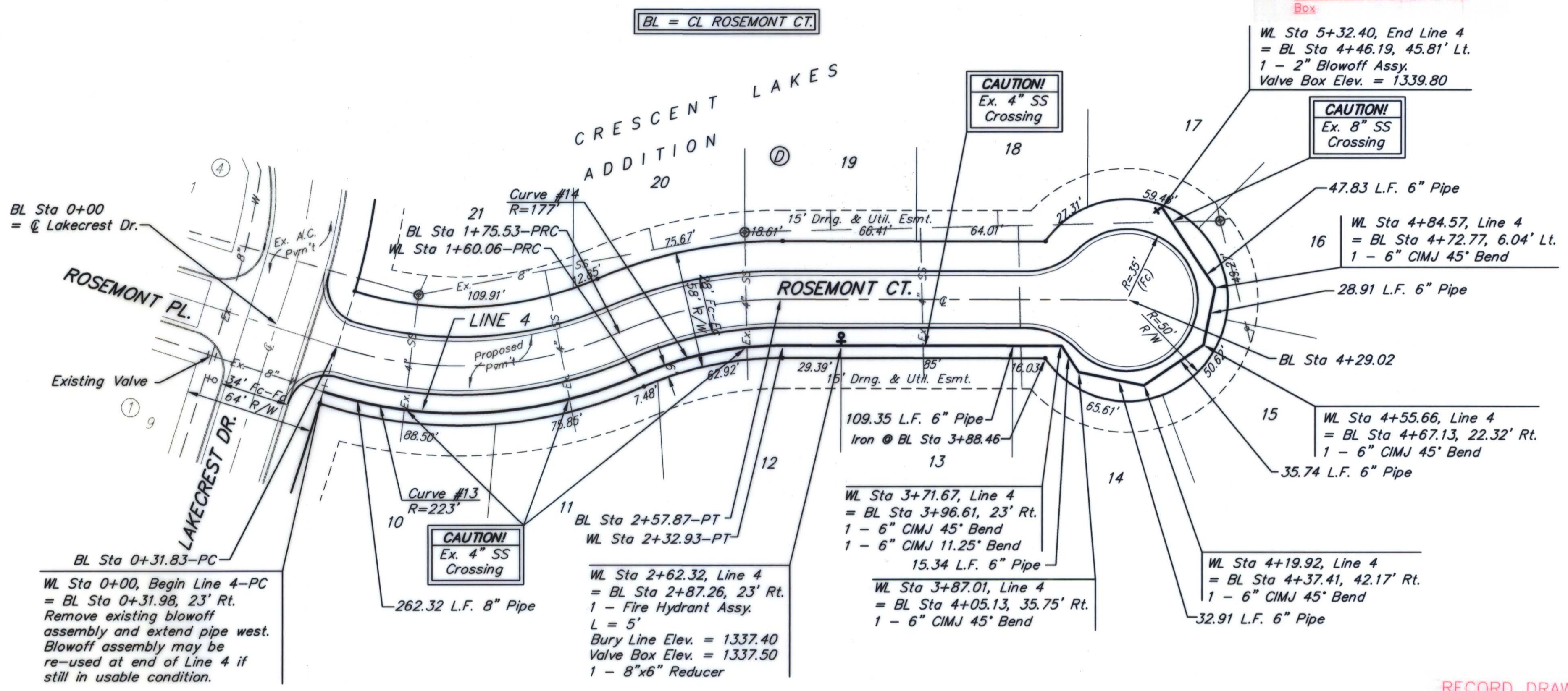
For radii under 200',  
 contractor shall use  
 short pipe lengths.

Curve #13  
 Curve Data Based on Waterline  
 Rad. = 223' Delta = 41°07'32" Tangent = 83.65'  
 Arc = 160.06' L.C. = 156.65' Del/Ft. = 7.70815 Min.

Station	Arc	CHORD LENGTHS	Defl.	T. Defl.
0+00.00	-	-	0°00'00"	0°00'00"
0+25.00	25.00'	25.66'	3°12'42"	3°12'42"
0+50.00	25.00'	25.66'	3°12'42"	6°25'24"
0+75.00	25.00'	25.66'	3°12'42"	9°38'06"
1+00.00	25.00'	25.66'	3°12'42"	12°50'49"
1+25.00	25.00'	25.66'	3°12'42"	16°03'31"
1+50.00	25.00'	25.66'	3°12'42"	19°16'13"
1+60.06	10.06'	10.33'	1°17'32"	20°33'46"

Curve #14  
 Curve Data Based on Waterline  
 Rad. = 177' Delta = 23°35'16" Tangent = 36.96'  
 Arc = 72.87' L.C. = 72.35' Del/Ft. = 9.71090 Min.

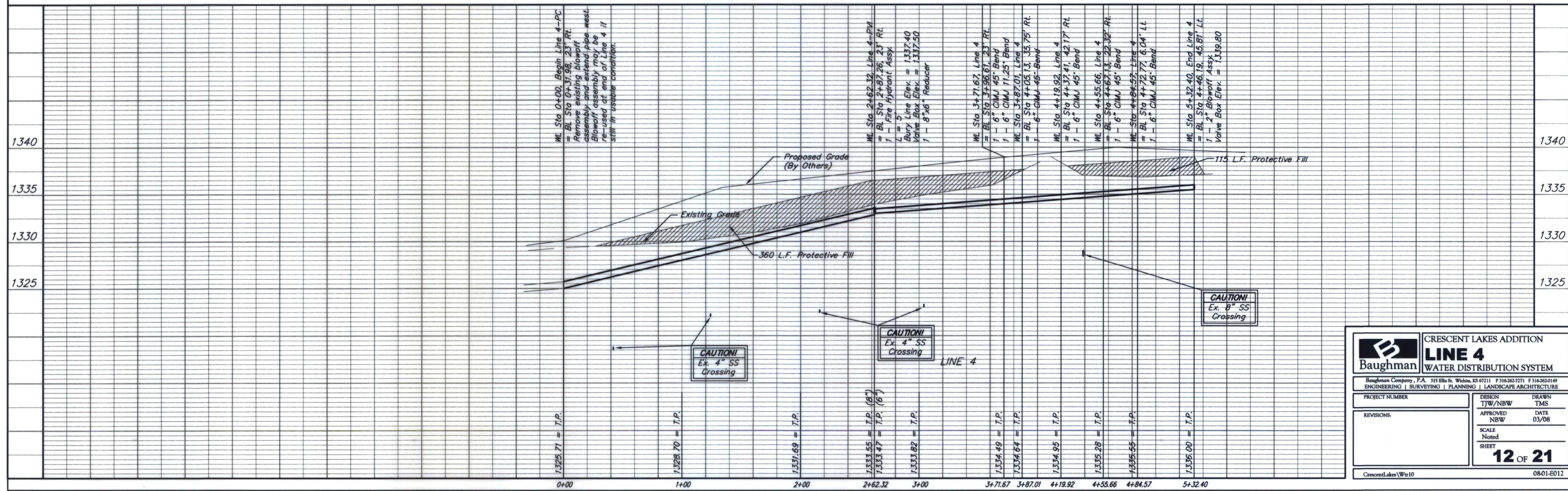
Station	Arc	CHORD LENGTHS	Defl.	T. Defl.
1+60.06	-	-	0°00'00"	0°00'00"
1+75.00	14.94'	14.43'	2°25'05"	2°25'05"
2+00.00	25.00'	24.13'	4°02'46"	6°27'51"
2+25.00	25.00'	24.13'	4°02'46"	10°30'37"
2+32.93	7.93'	7.66'	1°17'00"	11°47'38"



Blowoff Valve Located:  
 • 28' E. and 11' S. of MH  
 • 34' W. and 5' N. of NW  
 Corner of Westar Electrical  
 Box

Scale: 1" = 40' Horizontal  
 1" = 5' Vertical  
 = Iron

RECORD DRAWING  
 M.T. 5-8-09



**Baughman** CRESCENT LAKES ADDITION  
**LINE 4**  
 WATER DISTRIBUTION SYSTEM

Baughman Company, P.A. 315 Ellis St. Wichita, KS 67211 P 316363-7271 F 316362-0149  
 ENGINEERING | SURVEYING | PLANNING | LANDSCAPE ARCHITECTURE

PROJECT NUMBER	DESIGN	DRAWN
	TJW/NBW	TMS
REVISIONS:	APPROVED	DATE
	NBW	03/08
	SCALE	Noted
	SHEET	12 OF 21

CrescentLakes/Wr10 0801-E012