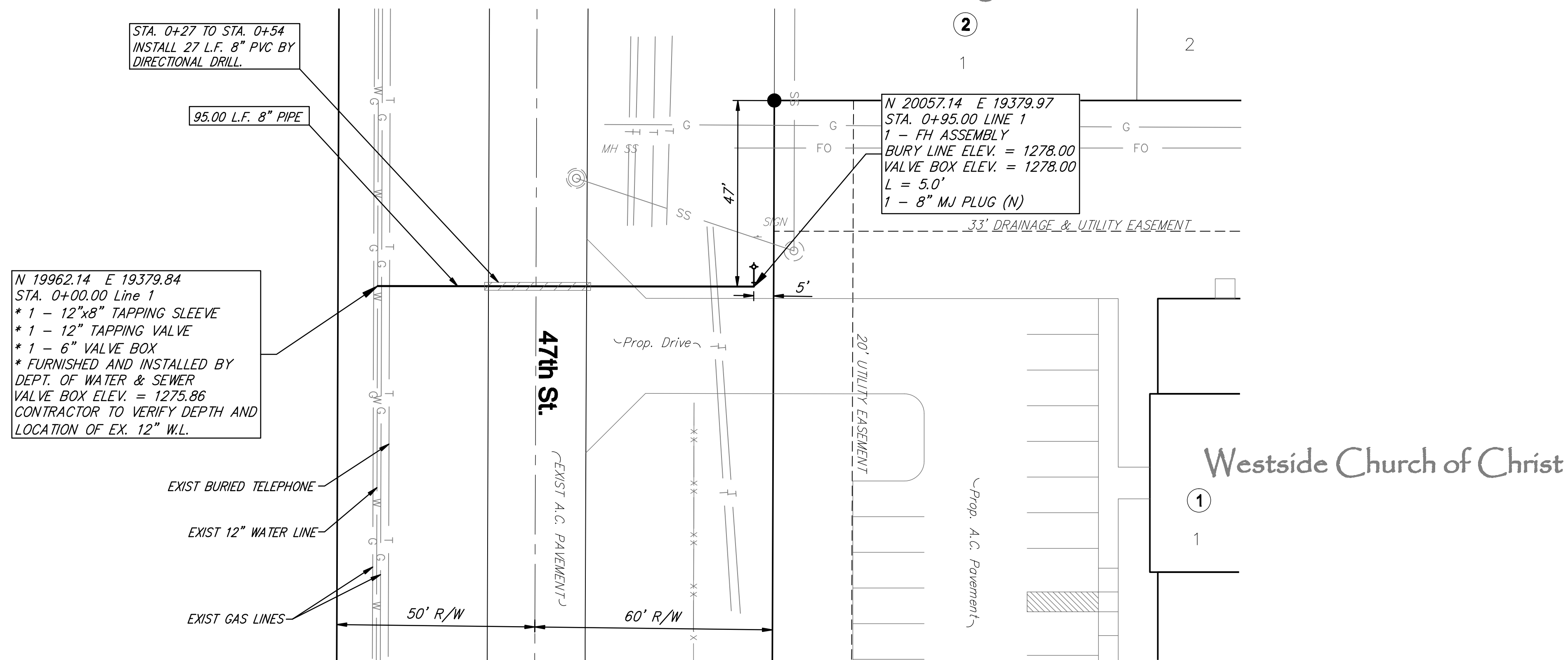
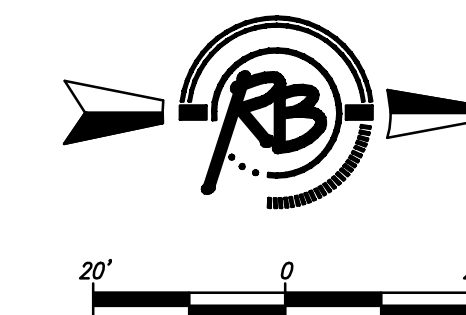
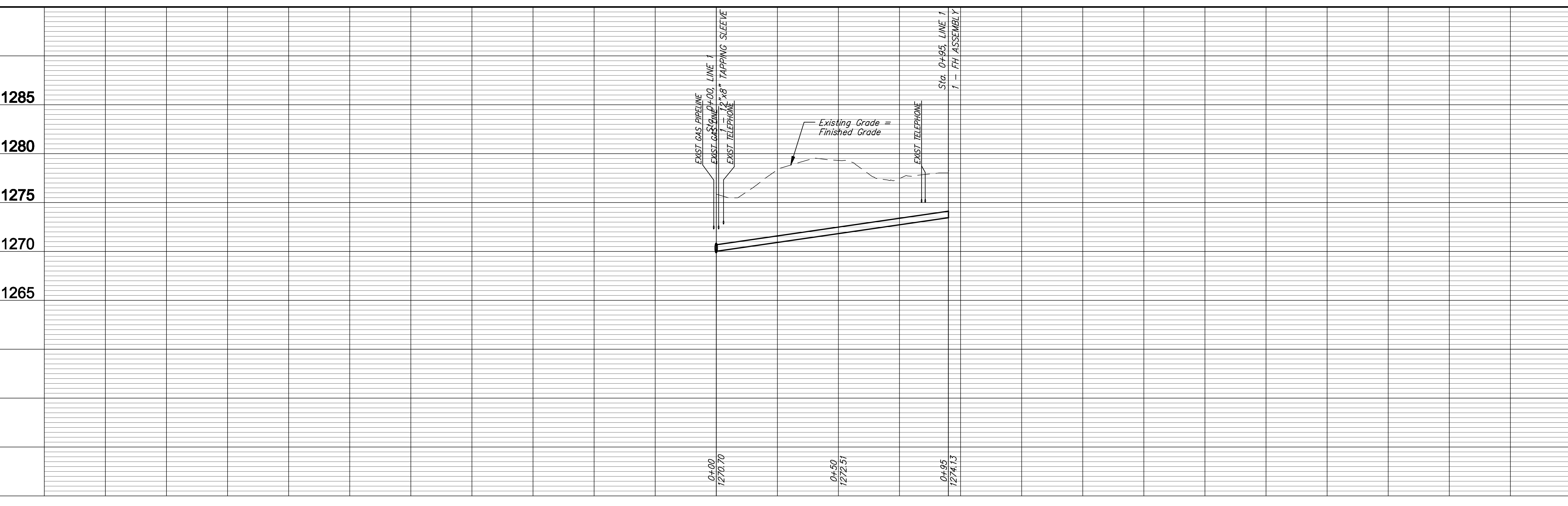


Angel Acres Addition



N 19962.14 E 19379.84
 STA. 0+00.00 Line 1
 * 1 - 12"x8" TAPPING SLEEVE
 * 1 - 12" TAPPING VALVE
 * 1 - 6" VALVE BOX
 * FURNISHED AND INSTALLED BY
 DEPT. OF WATER & SEWER
 VALVE BOX ELEV. = 1275.86
 CONTRACTOR TO VERIFY DEPTH AND
 LOCATION OF EX. 12" W.L.

N 20057.14 E 19379.97
 STA. 0+95.00 LINE 1
 1 - FH ASSEMBLY
 BURY LINE ELEV. = 1278.00
 VALVE BOX ELEV. = 1278.00
 L = 5.0'
 1 - 8" MJ PLUG (N)



Ruggles & Bohm, P.A.
 Engineering, Surveying, Land Planning
 448-90420
 Wichita, Kansas
 www.rugglesandbohm.com

AMERICAN
 SURVEYING
 &
 ENGINEERING
 SOCIETY
 APR. 26, 2009

PROJECT NUMBER
 448-90420
 DRAWING NO.
 3434E
 engineering base {Plan 1}

WEST SIDE CHURCH OF CHRIST
WATER IMPROVEMENTS
 WICHITA, KANSAS

3434E