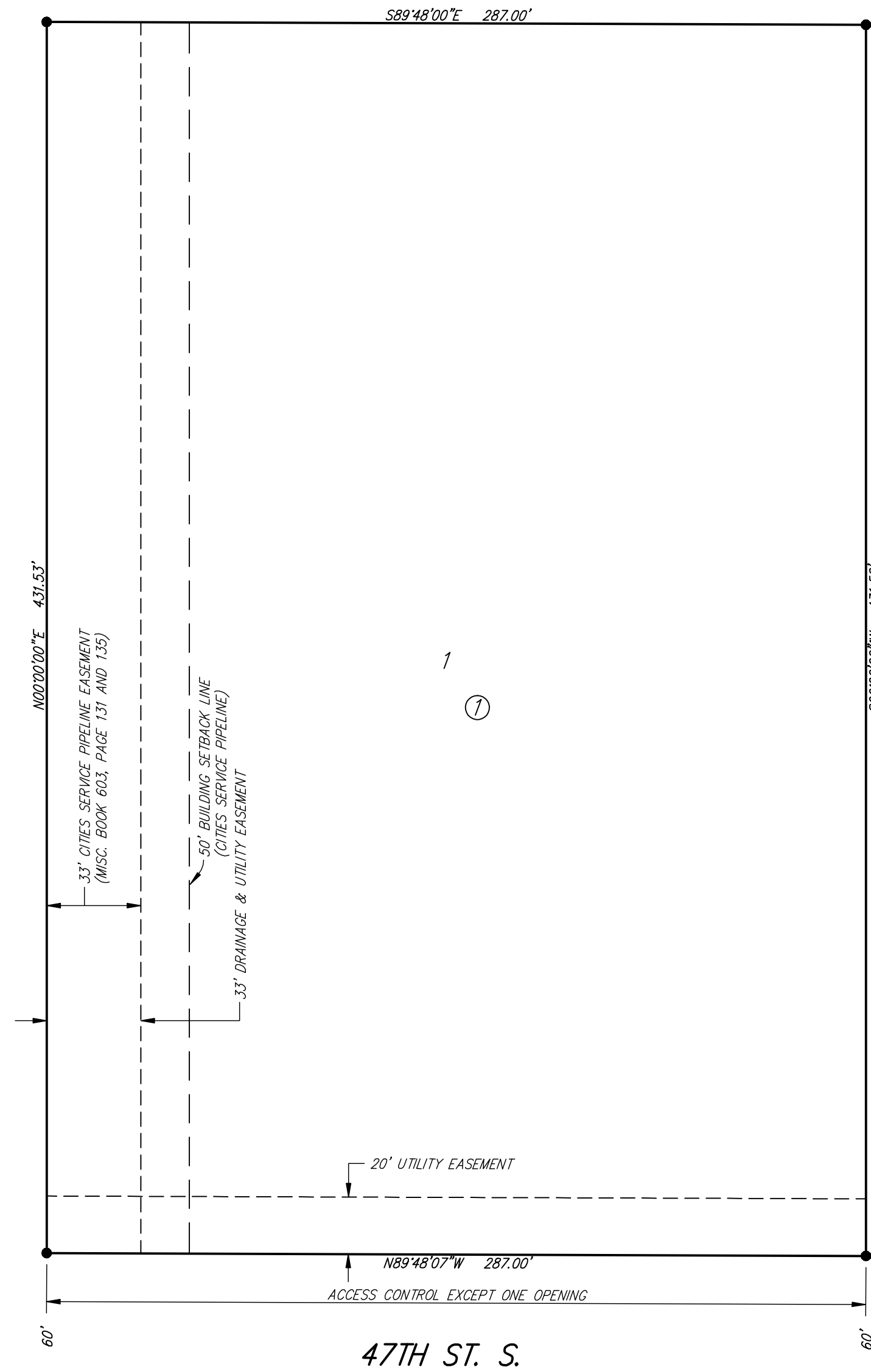


WESTSIDE CHURCH OF CHRIST

an Addition to Wichita, Sedgwick County, Kansas

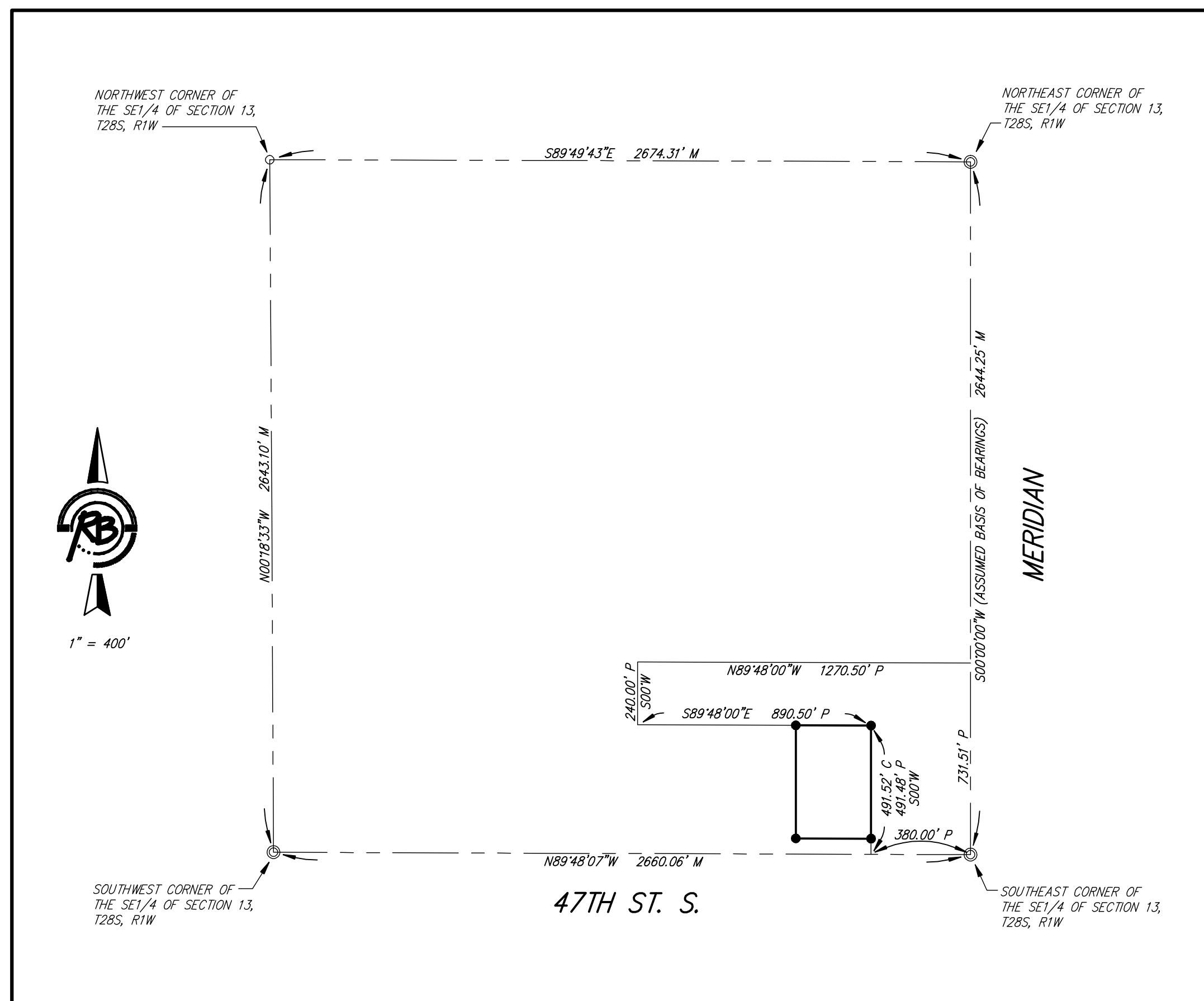


BENCH MARK: CITY OF WICHITA STANDARD DISC, 44" NORTH AND 30" EAST OF THE INTERSECTION OF THE CENTERLINES OF MERIDIAN AND 47TH STREET SOUTH
ELEVATION = 1279.18 (NGVD29)

M = Measured
P = Platted (Angel Acres)
C = Calculated

SURVEY MARKER LEGEND

- 1/2" REBAR W/MKEC CAP OVER STONE (FOUND)
- ⊙ 3/4" IRON PIPE IN THIMBLE (FOUND, ORIGIN UNKNOWN)
- 5/8" REBAR W/RUGGLES & BOHM CAP (SET)



State of Kansas)
Sedgwick County) SS

We, Ruggles & Bohm, P.A., Land Surveyors in aforesaid county and state, do hereby certify that, under the supervision of the undersigned, we have surveyed and platted "WESTSIDE CHURCH OF CHRIST", an Addition to Wichita, Sedgwick County, Kansas, and that the accompanying plat is a true and correct exhibit of the property surveyed, described as follows:

Lots 1, 2, 3 and 4, Block 1; Lots 6, 7, 8 and 9, Block 2; and Richmond Street as platted in Angel Acres, an Addition to Wichita, Sedgwick County, Kansas.

All public easements and dedications are hereby vacated by virtue of K.S.A. 12-512(b).

Ruggles & Bohm, P.A.

Thomas C. Ruggles Land Surveyor

Know all men by these presents that we, the undersigned, have caused the land described in the surveyor's certificate to be platted into a Lot and a Block, to be known as "WESTSIDE CHURCH OF CHRIST", an Addition to Wichita, Sedgwick County, Kansas. Access Controls as indicated are hereby granted to the appropriate governing body. The Utility Easements are hereby granted for the construction and maintenance of all public utilities. The Drainage Easement is hereby granted to the public as indicated for drainage purposes. A drainage plan has been developed for this plat; the property shall remain at established grades, or as modified with the approval of the City Engineer, and unobstructed to allow for the conveyance of storm water.

The Westside Church of Christ, Inc.,
a Kansas non-profit corporation

Dennis W. Westbrook Secretary

State of Kansas)
Sedgwick County) SS

The foregoing instrument acknowledged before me, this _____ day of _____, 200__, by Dennis W. Westbrook, Secretary, on behalf of The Westside Church of Christ, Inc., a Kansas non-profit corporation.

Notary Public

My appointment expires _____

This plat of "WESTSIDE CHURCH OF CHRIST", an Addition to Wichita, Sedgwick County, Kansas, has been submitted to and approved by the Wichita-Sedgwick County Metropolitan Area Planning Commission, Wichita, Kansas.

Dated this _____ day of _____, 200__.

Wichita-Sedgwick County Metropolitan Area Planning Commission

Darrell Downing Chair

John L. Schlegel Secretary

This plat approved and all dedications shown hereon accepted by the City Council of the City of Wichita, Kansas, this _____ day of _____, 200__.

At the Direction of the City Council

Carl Brewer Mayor

Karen Sublett City Clerk

Reviewed in accordance with K.S.A. 58-2005 on this _____ day of _____, 200__.

Tricia L. Robello, LS #1246 Deputy County Surveyor Sedgwick County Kansas

Entered on transfer record this _____ day of _____, 200__.

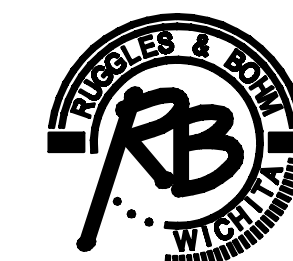
Don Brace County Clerk

State of Kansas)
Sedgwick County) SS

This is to certify that this plat has been filed for record in the office of the Register of Deeds, this _____ day of _____, 200__, at _____ o'clock _____ M, and is duly recorded.

Bill Meek Register of Deeds

Tonya Buckingham Deputy



Ruggles & Bohm, P.A.
Engineering, Surveying, Land Planning

DWG FILE: SURVEY BASE
PROJECT NO. 3320P
NOVEMBER 12, 2008

924 North Main
Wichita, Kansas 67203
www.rbkansas.com

(316) 264-8008
(316) 264-4821 fax
E-mail: info@rbkansas.com