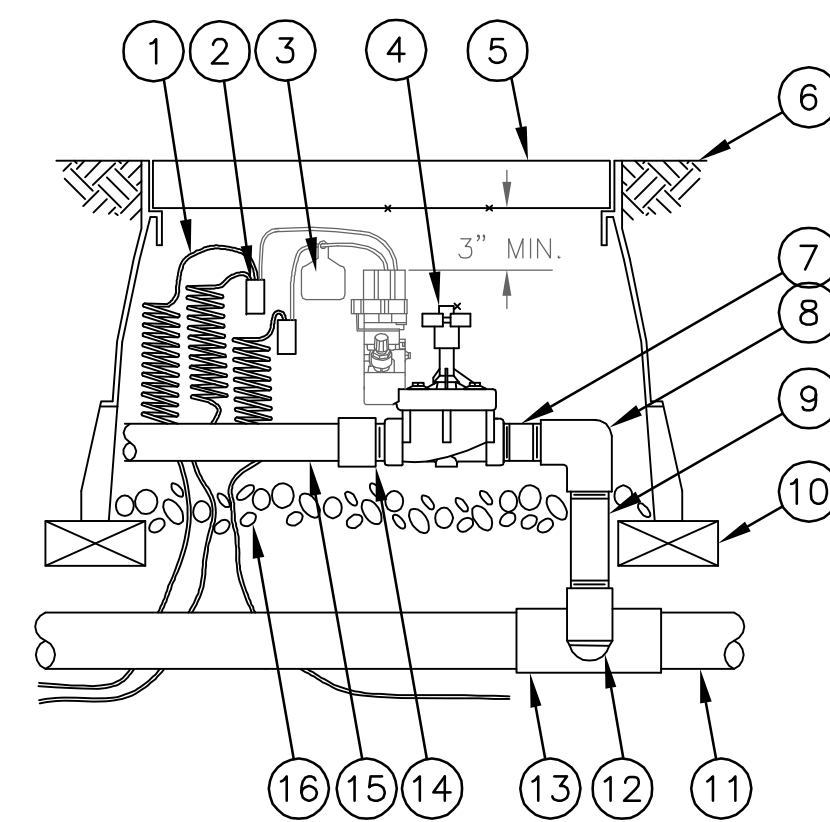


IRRIGATION NOTES:

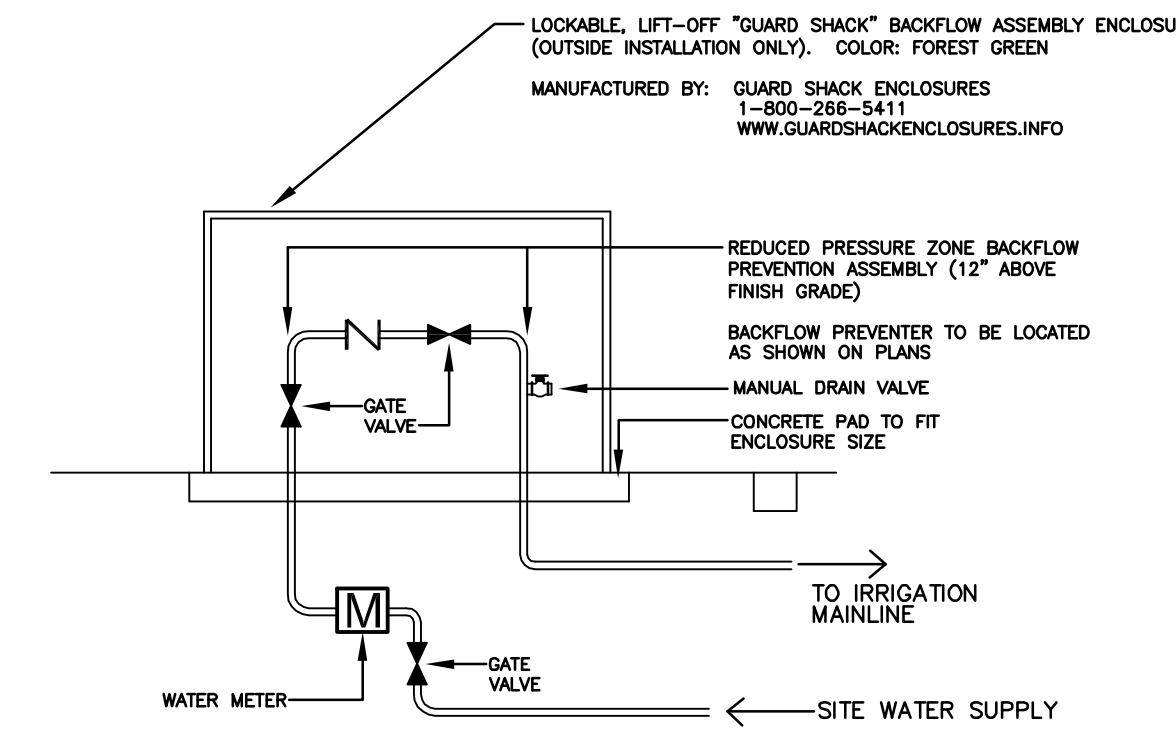
- The contractor shall provide shop drawings to the Landscape Architect for approval prior to commencement of construction. The contractor is to install equipment necessary to provide a complete and functional system that is in compliance with the plans, specifications, all applicable codes, and regulations.
- Contractor shall be responsible to field stake system prior to digging/ trenching with final approval by Landscape Architect or designated representative.
- The Irrigation Contractor shall be responsible for damages to the grounds, pavement, sidewalks, curbs, electrical systems, and other site elements caused by leaks in pipe already installed or being installed. Repair to all damage caused shall be made at irrigation contractor's expense.
- Submit all product information and shop drawings to the Landscape Architect prior to commencement of construction.
- System shall be designed to irrigate shrub bed and prairie grass planting, as shown on the drawings.
- Irrigation Contractor shall use Rainbird, Toro, or Hunter irrigation heads, or approved equal for shrub areas.
- Irrigation Contractor will verify static pressure and volume of irrigation water supply prior to beginning construction. Use pressure regulating valve as necessary to assure proper performance.
- Controller to be a Rainbird TB05 Controller, mounted in a lockable cabinet; location to be coordinated with the general contractor and owner.
- Manual drain valves are to be located at the ends and low points of the irrigation mainline. Place manual valves in latchable valve box for easy access. Place one cubic foot of gravel below valve.
- Provide PVC sleeves for irrigation wiring and pipes that cross under paving. Wherever possible, combine piping to reduce the quantity of sleeving materials. Irrigation Contractor shall coordinate with Paving Contractor on the installation of 4" PVC sleeving. Sleeving shall be installed a minimum of 28" below bottom of driving surface pavement sections.
- Install irrigation mainline 18" minimum below finish grade unless otherwise noted. All mainlines to be class 200 PVC. All laterals to be sized as required to maintain adequate pressure based upon standard flow/ pipe sizing. All laterals to be Schedule 40 PVC.
- When installing irrigation pipe along curbs or sidewalks, place pipe as close to pavement as possible to allow for planting of trees, shrubs, and groundcovers.
- Combine mainline, laterals, and control wires into same trench wherever possible.
- Adjust all irrigation heads so that they do not spray onto paving or contribute to excessive runoff.
- Electrical control and ground wire to be used for connecting remote control valves to the automatic controller shall be 14 AWG minimum.
 - Control wire shall be one color and ground wire shall be another color.
 - Unused wires buried in the ground for future use shall be a third color.
 - Wire connections in the field shall be made using approved wire connectors utilizing a sealing cement to insure a watertight connection.
- Refer to City of Wichita Standard Specifications-- Part 900 Landscape and Irrigation and Special Provisions for additional requirements.

- 30-INCH LINEAR LENGTH OF WIRE, COILED
- WATERPROOF CONNECTION
- ID TAG: RAIN BIRD VID SERIES
- REMOTE CONTROL VALVE:
- VALVE BOX WITH COVER
- FINISH GRADE/TOP OF MULCH
- PVC SCH 80 NIPPLE (CLOSE)
- PVC SCH 40 ELL
- PVC SCH 80 NIPPLE (LENGTH AS REQUIRED)
- BRICK (1 OF 4)
- PVC MAINLINE PIPE
- SCH 80 NIPPLE (2-INCH LENGTH, HIDDEN) AND SCH 40 ELL
- PVC SCH 40 TEE OR ELL
- PVC SCH 40 MALE ADAPTER
- PVC LATERAL PIPE
- 3.0-INCH MINIMUM DEPTH OF 3/4-INCH WASHED GRAVEL



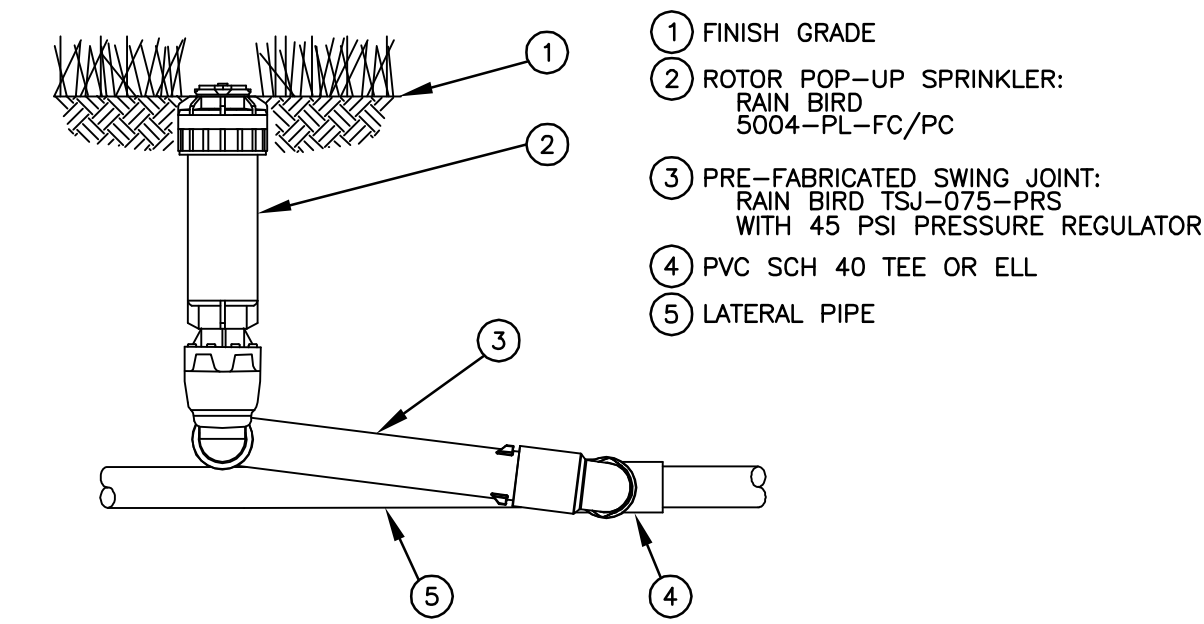
REMOTE CONTROL VALVE

Not To Scale



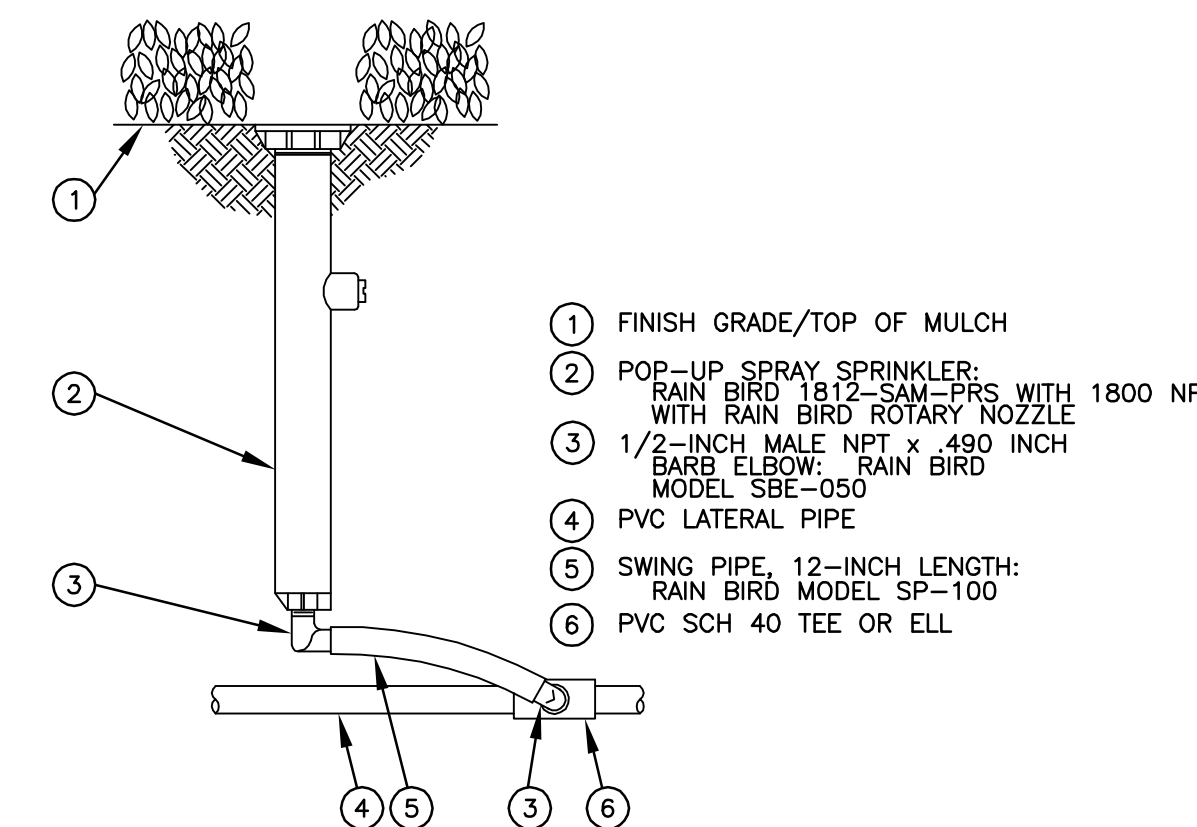
REDUCED PRESSURE BACKFLOW PREVENTER

Not To Scale



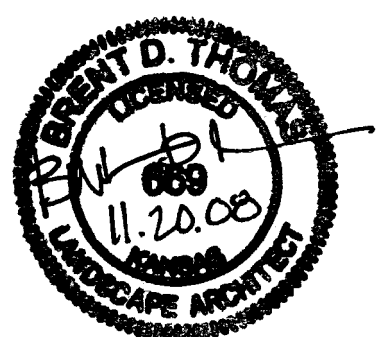
ROTOR POP-UP SPRINKLER HEAD

Not To Scale



POP-UP SHRUB SPRAY HEAD

Not To Scale



21st STREET STREETScape- I-135 TO GROVE GATEWAY LANDSCAPE PLAN WICHITA, KANSAS

	Ruggles & Bohm, P.A. Engineering, Surveying, Land Planning		DESIGN	BDT	SHEET 14 OF 16
	924 North Main Wichita, Kansas 67203 www.rbkansas.com		DRAWN	BDT	
	(316) 264-8008 (316) 264-4621 fax E-mail: info@rbkansas.com		REVIEW		
	DRAWING FILE ENG BASE {LAYOUT}		PROJECT NUMBER	472-84728	