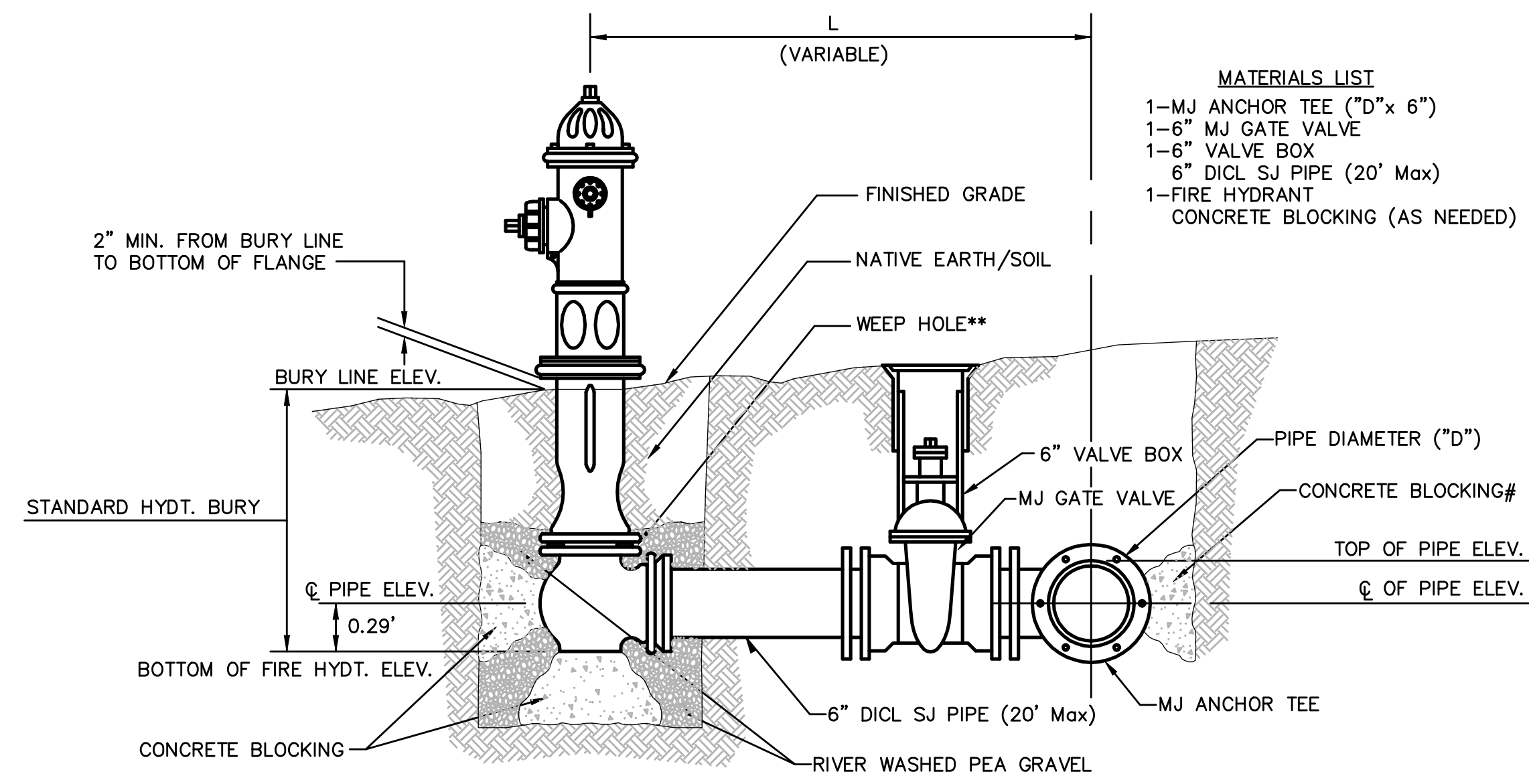


- NOTES**
- This detail covers Butterfly Valve installation, inclusive, regardless of type of pipe or joint used. Larger lines to be detailed on plans.
 - 6" Valve Box and Cover required per City of Wichita Std. Specifications.
 - Conc. Support Block to be full width of trench.



FIRE HYDRANTS REQUIRED

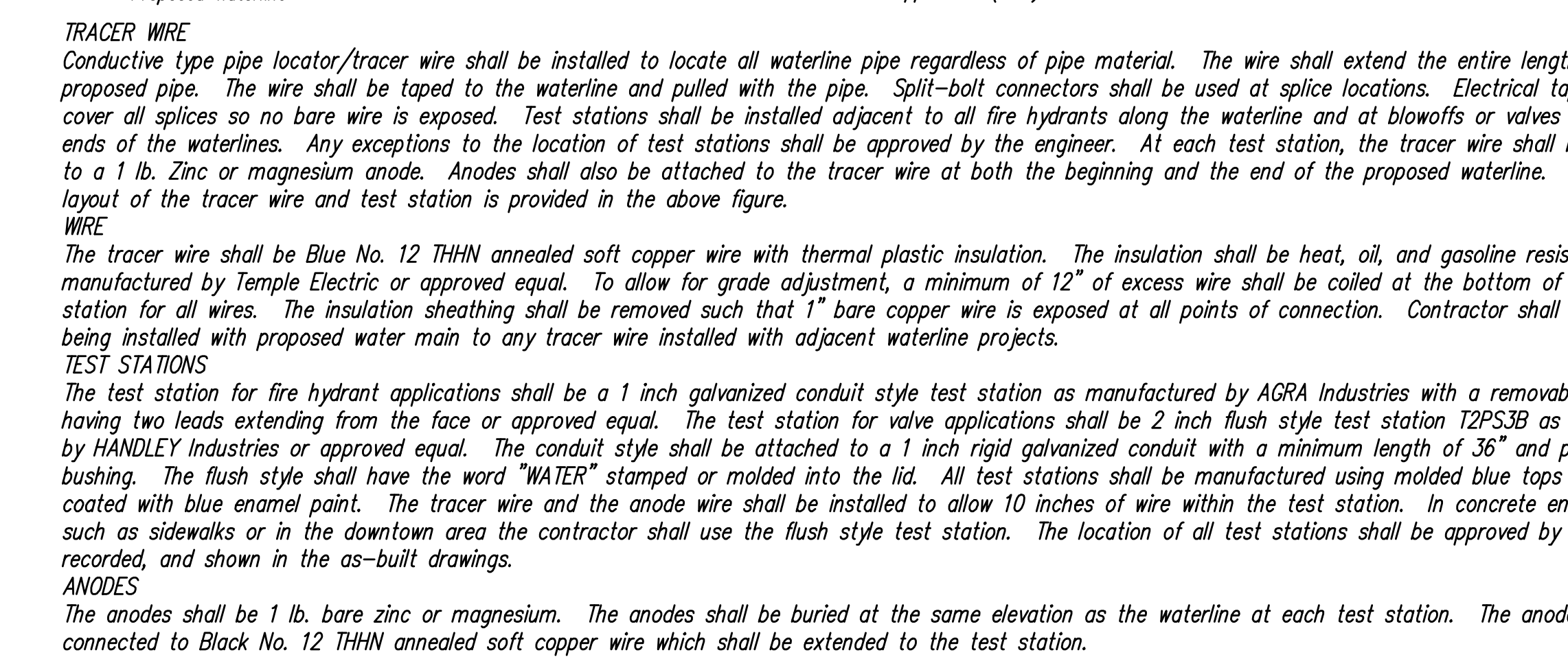
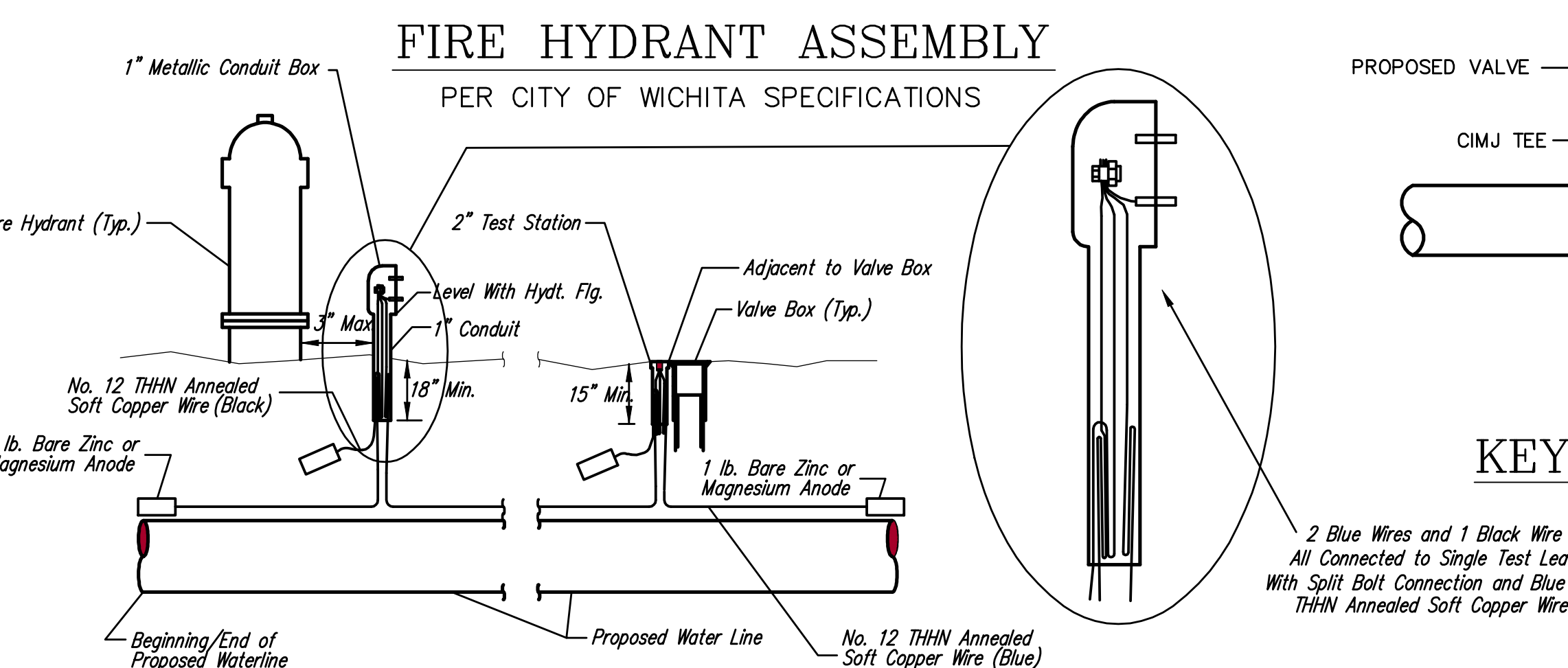
LINE	STATION	BURY LINE ELEVATION	TOP OF PIPE ELEVATION	*FIRE HYDRANT BURY REQUIRED
1	0+00.00	1328.45	1318.28	**5.0'
1	6+14.86	1327.25	1322.90	5.0'
1	10+16.75	1326.55	1322.70	4.5'

CAUTION! WEEP HOLES TO BE KEPT CLEAR DURING CONSTRUCTION AND BACKFILL. CONCRETE FOR THRUST BLOCKING SHALL NOT OBSTRUCT WEEP HOLES.

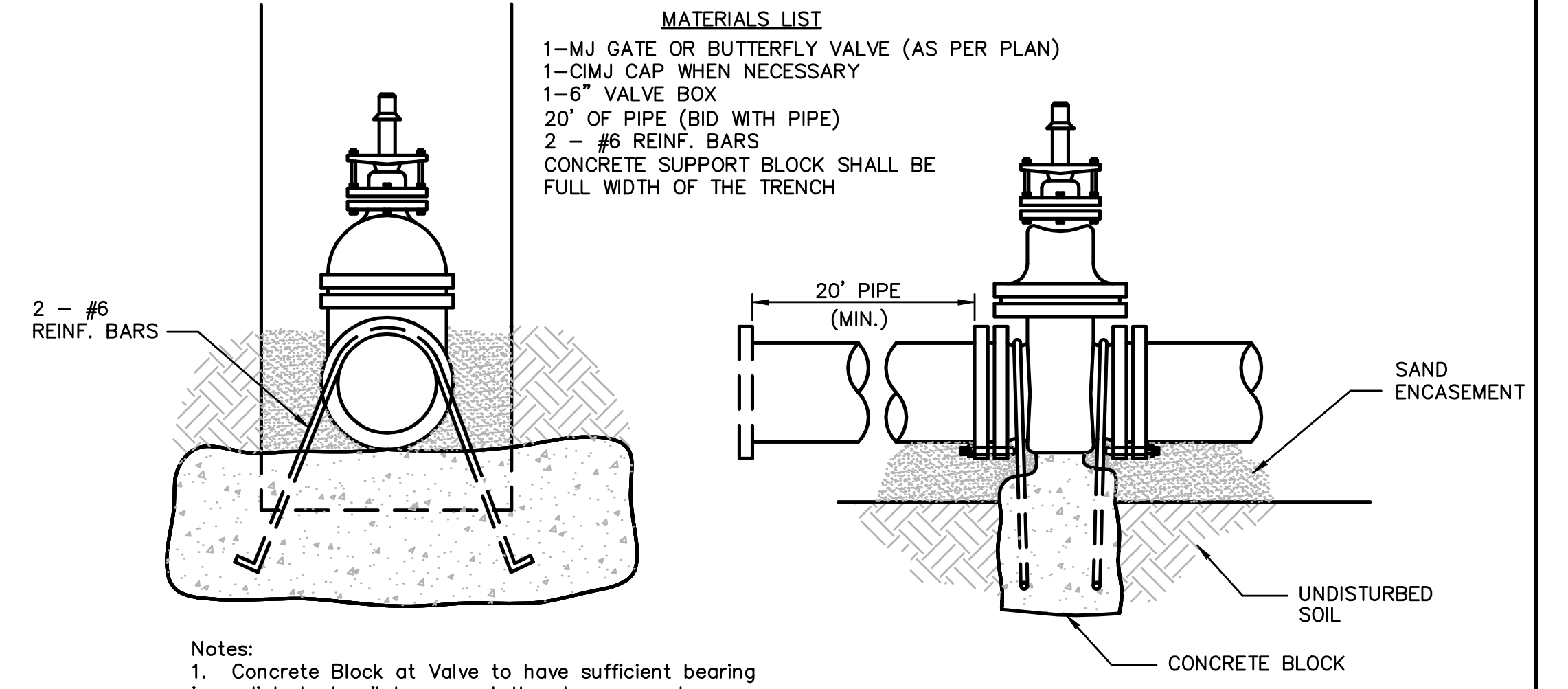
CONCRETE THRUST BLOCKING SHALL BE KEPT CLEAR OF BOLTS, NUTS, AND MJ ACCESSORIES.

* IF HYDRANT BURY IS IN EXCESS OF 5', CONTRACTOR SHALL USE STANDARD 5' HYDRANT BURY AND HYDRANT BARREL EXTENSIONS AS NECESSARY.

** HYDRANT BURY WILL DEPEND ON CONSTRUCTION OF SWING ASSEMBLY AND MAY REQUIRE BARREL EXTENSIONS. NO ADDITIONAL PAYMENT WILL BE ALLOWED FOR ADDITIONAL BARREL EXTENSIONS THAT MAY BE REQUIRED



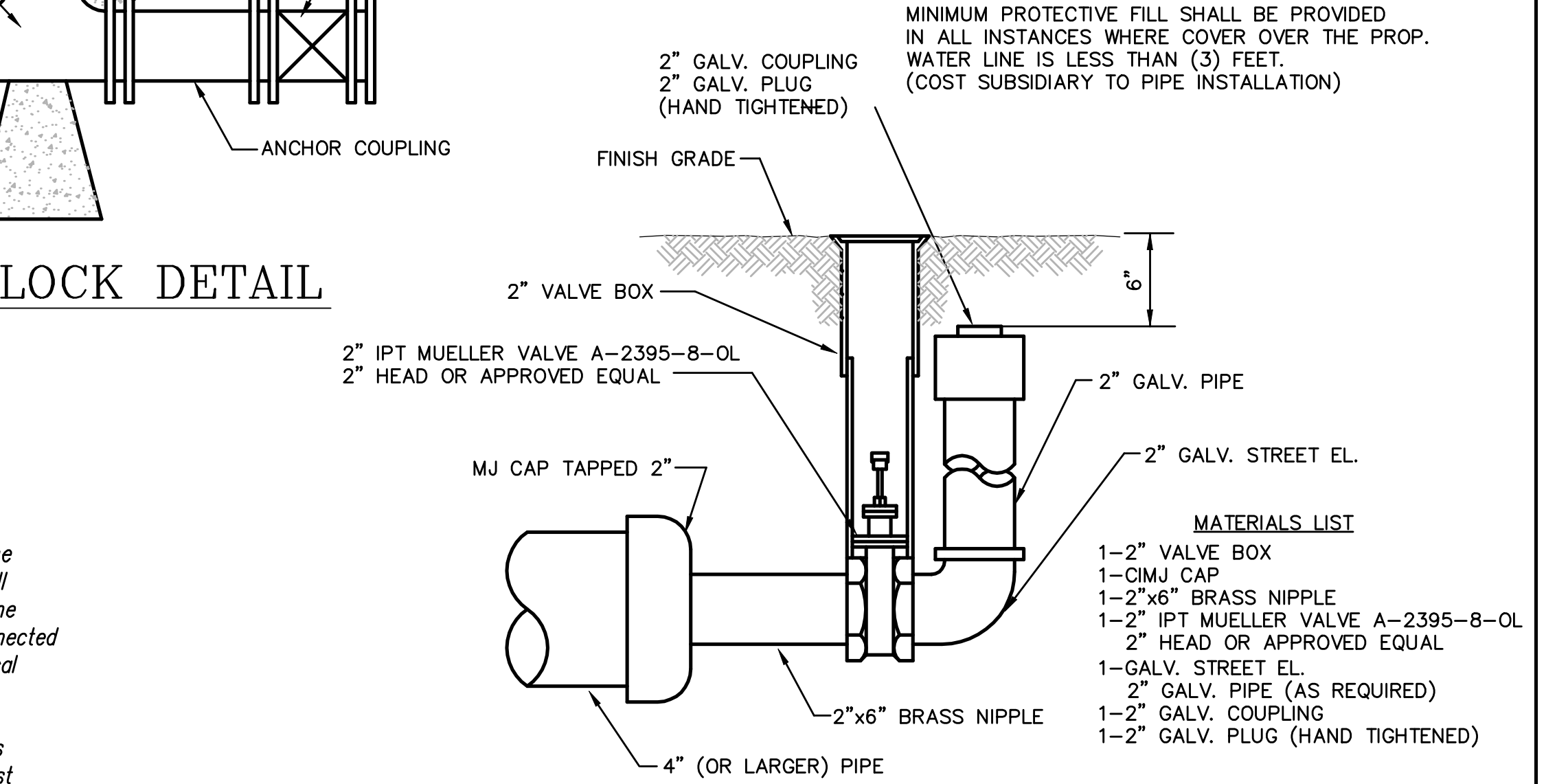
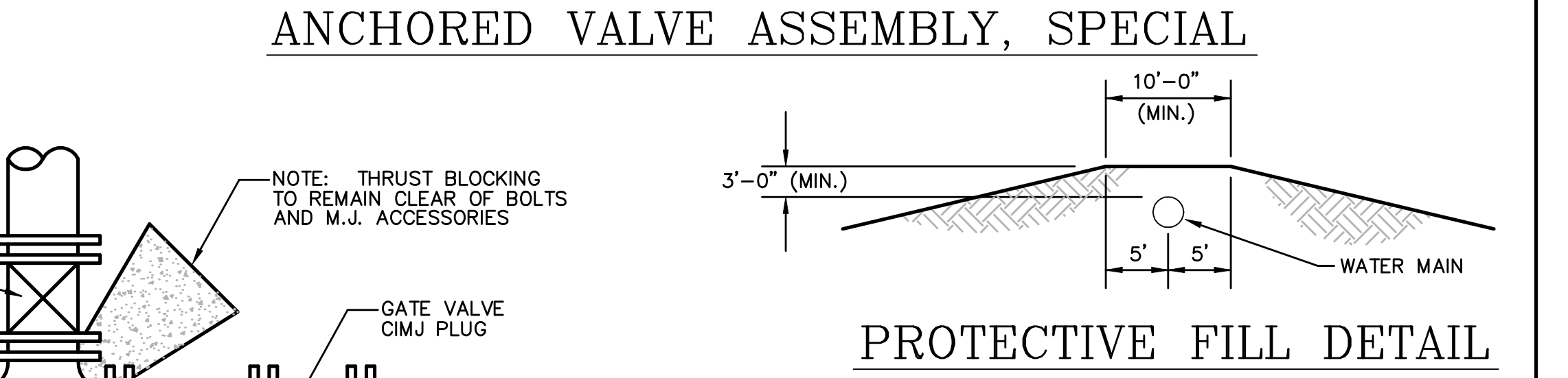
TRACER WIRE DETAIL
 COST IS SUBSIDIARY TO PIPE INSTALLATION



THRUST AT VALVES

VALVE	THRUST AT 150 #/in ²
4"	1809 lbs.
6"	4245 lbs.
8"	7540 lbs.
12"	16965 lbs.

Notes:
 1. Concrete Block at Valve to have sufficient bearing in undisturbed soil to prevent thrust movement as shown in table at right. Field Engineer to determine thrust loading of undisturbed soil and final size of thrust block.
 2. The thrust block shall be constructed such that bolts, nuts, and other MJ accessories are kept clear of concrete.
 3. All valves at dead ends and at other locations as called out on the plans shall be blocked as shown here.



THE CITY OF WICHITA

STANDARD WATER ASSEMBLY DETAILS

JAMES L. ARMOUR, P.E. - CITY ENGINEER

PROJECT NUMBER 448-90433	INDEX CODE 735438
DATE SEP 2004	SHEET 2 OF 11

CITY ENGINEER'S OFFICE
 CITY HALL - SEVENTH FLOOR
 455 NORTH MAIN STREET
 WICHITA, KANSAS 67202
 (316) 268-4601
 (316) 268-4114 FAX

CONCRETE SUPPORT BLOCKING FOR BUTTERFLY VALVE INSTALLATION

Revised: 6-7-00, MCG