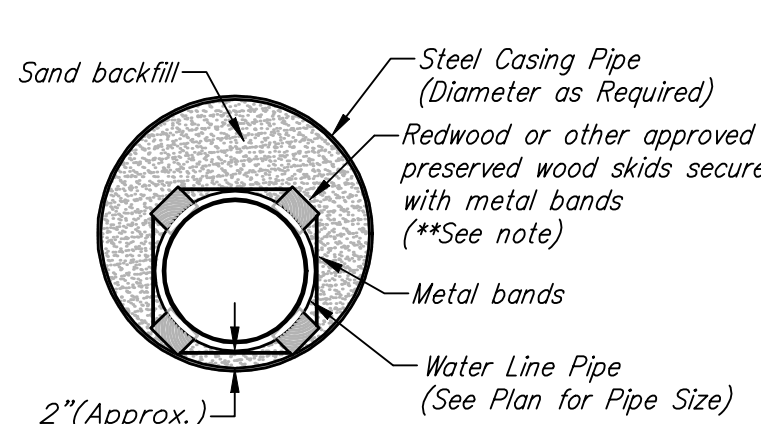
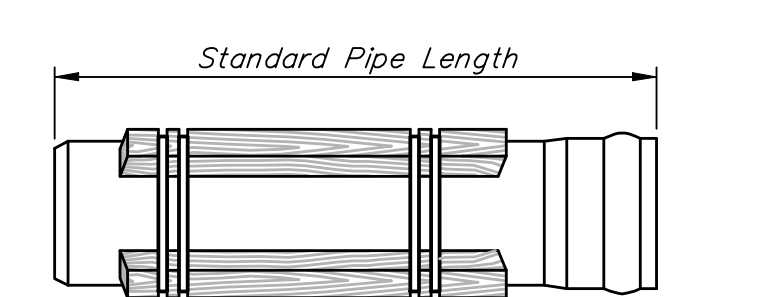
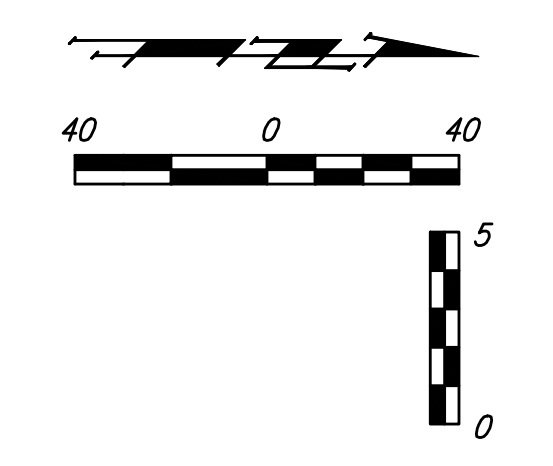
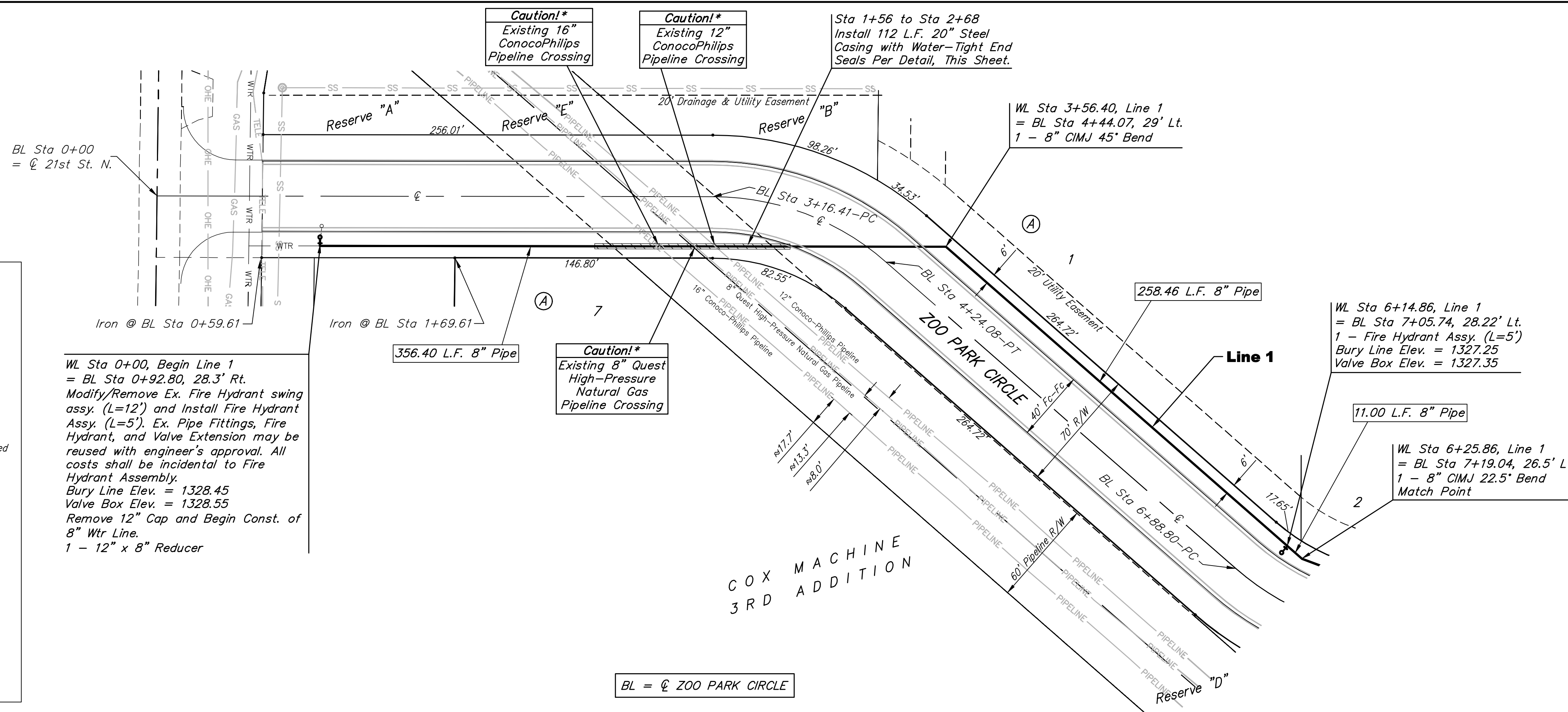


BENCHMARKS:

BM #1: CITY OF WICHITA BENCHMARK DISC, 48.5' W. & 28' N. OF \odot 21ST STREET NORTH AND HOOVER STREET. ELEV. = 1326.47 NGVD29

BM #2: RAIL ROAD SPIKE IN POWER POLE 28' N. OF \odot OF 21ST STREET NORTH ALONG THE WEST LINE OF THE PLAT. ELEV. = 1327.25 NGVD29



**Note: Skids shall be secured to the water pipe in such a manner to support the weight of the pipe along its full barrel length on the wood skids without any of the weight supported by the pipe bell.

STEEL ENCASEMENT DETAIL

WL Sta 0+00, Begin Line 1 = BL Sta 0+92.80, 28.3' Rt. Modify/Remove Ex. Fire Hydrant swing assy. (L=12') and Install Fire Hydrant Assy. (L=5'). Ex. Pipe Fittings, Fire Hydrant, and Valve Extension may be reused with engineer's approval. All costs shall be incidental to Fire Hydrant Assembly. Bury Line Elev. = 1328.45 Valve Box Elev. = 1328.55 Remove 12" Cap and Begin Const. of 8" Wtr Line. 1 - 12" x 8" Reducer

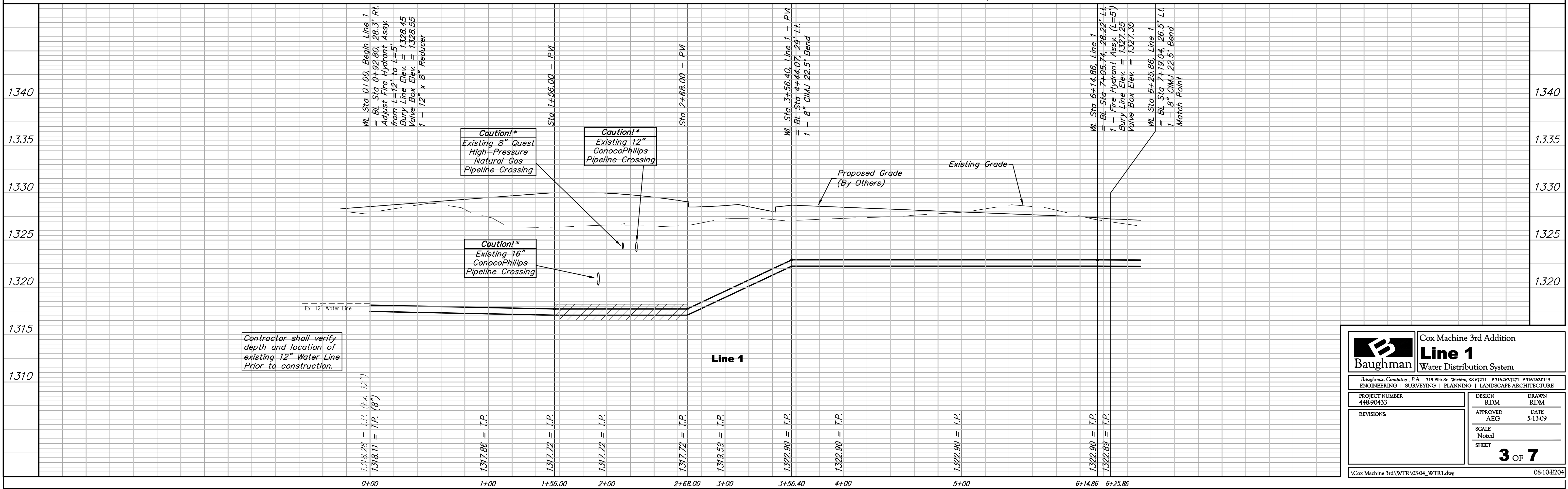
WL Sta 6+14.86, Line 1 = BL Sta 7+05.74, 28.22' Lt. 1 - Fire Hydrant Assy. (L=5') Bury Line Elev. = 1327.25 Valve Box Elev. = 1327.35

WL Sta 6+25.86, Line 1 = BL Sta 7+19.04, 26.5' Lt. 1 - 8" CIMJ 22.5' Bend Match Point

*** Pipeline Crossing Notes:**

1. No Construction Equipment or Operations shall be allowed within ConocoPhillips or Quest Pipeline Right-of-way without first contacting a representative from both pipeline companies, a minimum of 48 hours prior to beginning construction.
2. Contractor and all sub-contractors shall be required to attend a safety meeting with pipeline personnel prior to any mobilization.
3. All construction work within or around the Pipeline Easement shall be done Monday through Friday.
4. Contractor shall coordinate all construction within Pipeline R/W with each Pipeline Company through Kansas One-Call. Contact the following in case of an emergency:
Quest: Joe Fowler (316) 764-6015
ConocoPhillips: J.R. McCaffree (316) 838-3411

BL = \odot ZOO PARK CIRCLE



		Cox Machine 3rd Addition Line 1 Water Distribution System	
Baughman Company, P.A. 315 Ellis St. Wichita, KS 67211 P 316-262-7771 F 316-263-0149 ENGINEERING SURVEYING PLANNING LANDSCAPE ARCHITECTURE			
PROJECT NUMBER 448-90433	DESIGN RDM	DRAWN RDM	APPROVED AEG
REVISIONS:	DATE 5-13-09	SCALE Noted	SHEET 3 OF 7
Cox Machine 3rd\WTR\03-04_WTR1.dwg			08-10-E204