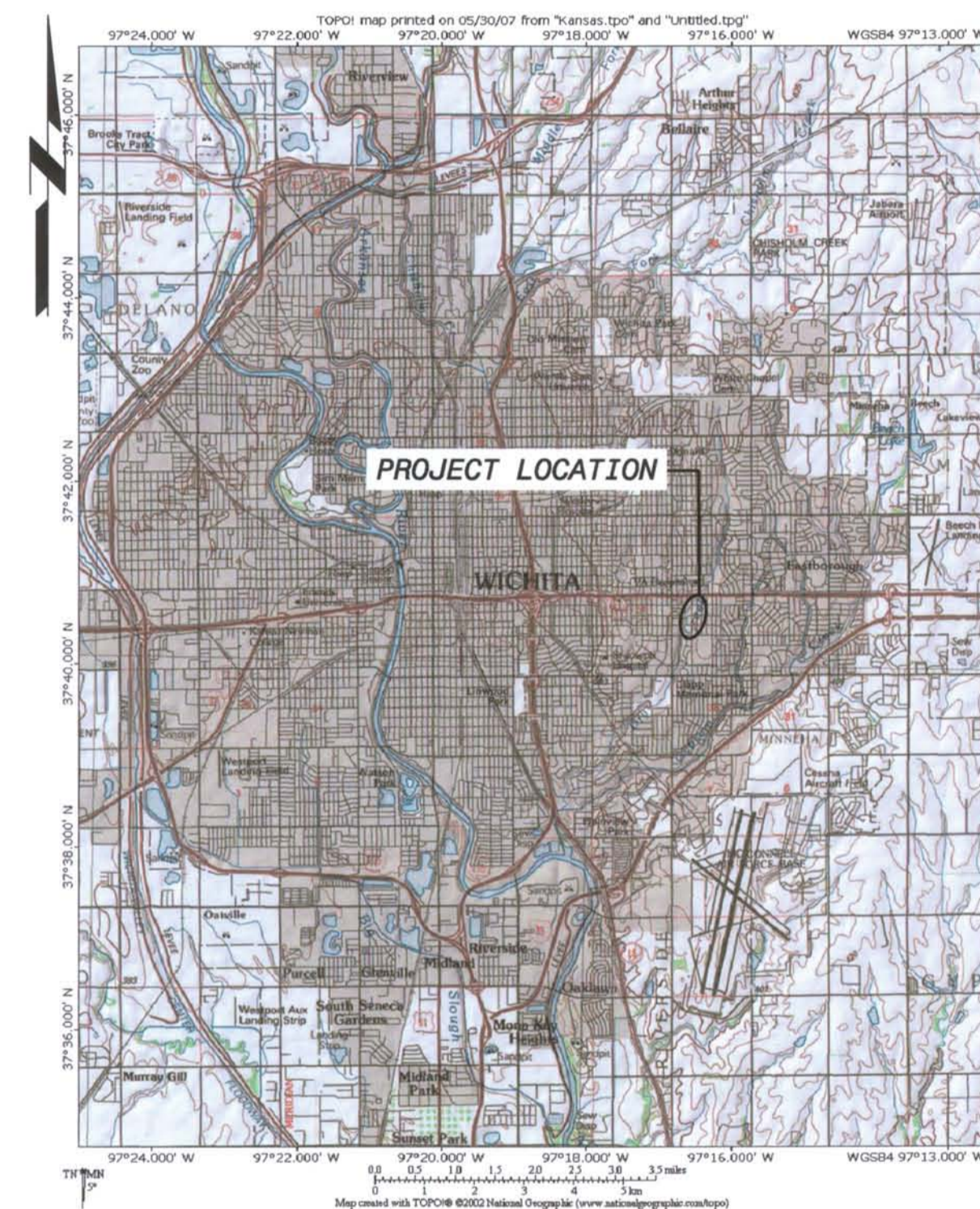


DRY CREEK CHANNEL IMPROVEMENTS LINCOLN TO ORME WICHITA, KANSAS

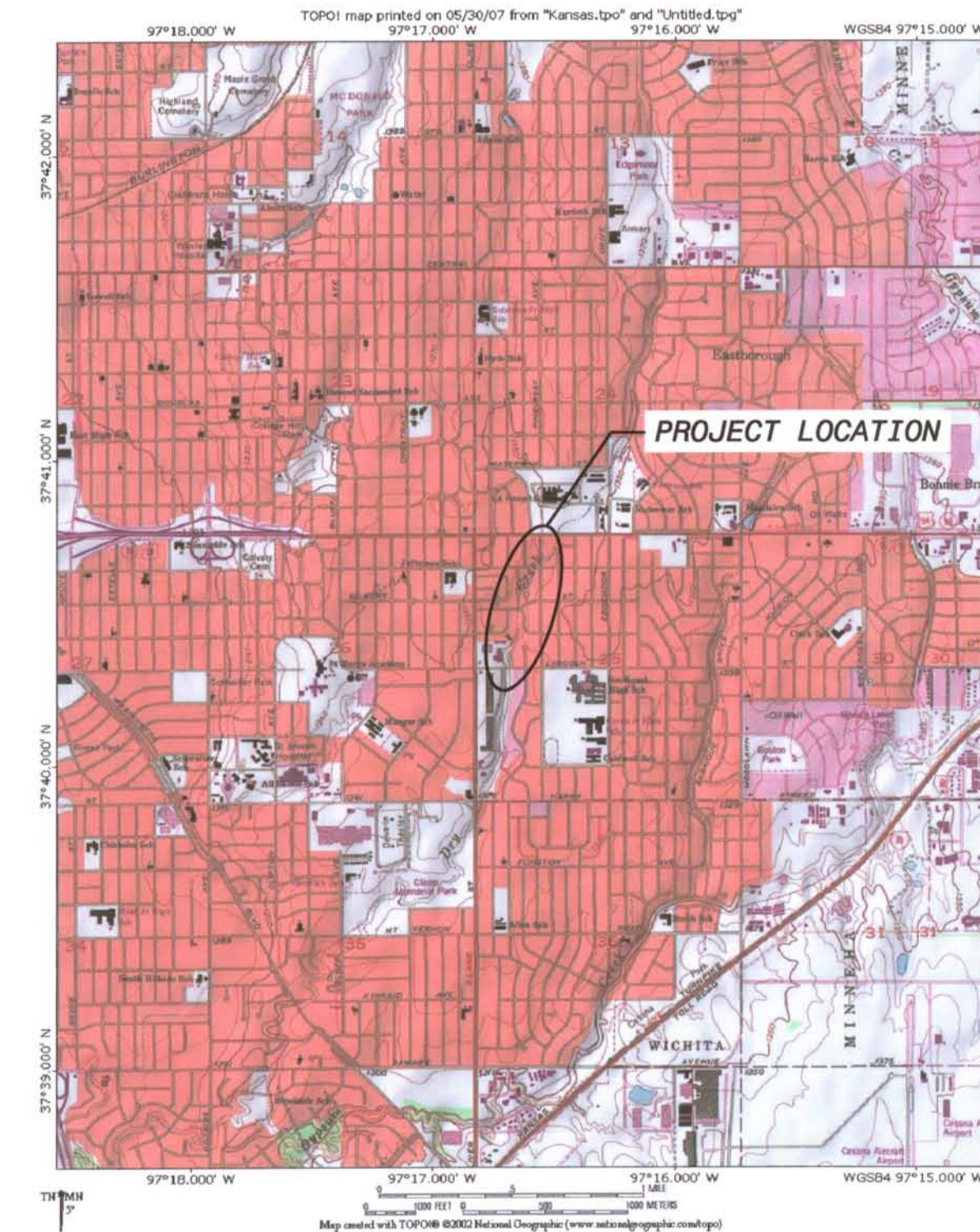
PROJECT NO. 468-84177

O.C.A. NO 660801

SHT #	DWG #	INDEX OF SHEETS
1	001	COVER SHEET
2	002	LINCOLN TO ORME - EXISTING SITE PLAN WITH CONTROL POINTS, DRAINAGE TABLE, LEGEND, AND GENERAL NOTES
3	003	LINCOLN TO ORME - EROSION CONTROL - EROSION & SEDIMENT CONTROL GENERAL NOTES
4	004	LINCOLN TO ORME - EROSION CONTROL PRE-CONSTRUCTION - EROSION & SEDIMENT CONTROL SITE PLAN
5	005	LINCOLN TO ORME - EROSION CONTROL POST-CONSTRUCTION - EROSION & SEDIMENT CONTROL SITE PLAN
6	006	LINCOLN TO ORME - EROSION CONTROL - EROSION & SEDIMENT CONTROL DETAILS
7	007	LINCOLN TO ORME - EROSION CONTROL - EROSION & SEDIMENT CONTROL DETAILS
8	008	LINCOLN TO ORME - EROSION CONTROL - EROSION & SEDIMENT CONTROL DETAILS
9	009	LINCOLN TO ORME - EROSION CONTROL - EROSION & SEDIMENT CONTROL DETAILS
10	010	LINCOLN TO ORME - CITY OF WICHITA STANDARDS (SUBDIVISION) - EROSION & SEDIMENT CONTROL DETAILS
11	011	LINCOLN TO ORME - CITY OF WICHITA STANDARDS (SOIL EROSION BMPs) - EROSION & SEDIMENT CONTROL DETAILS
12	012	LINCOLN TO ORME - CITY OF WICHITA STANDARDS (SOILS EROSION BMPs) - EROSION & SEDIMENT CONTROL DETAILS
13	013	LINCOLN TO ORME - CITY OF WICHITA STANDARDS CURB, INLET, ENTRANCE - EROSION & SEDIMENT CONTROL DETAILS
14	014	LINCOLN TO ORME - CONSTRUCTION LIMITS, EASEMENTS AND DEMOLITION PLAN
15	015	LINCOLN TO ORME - OVERALL IMPROVEMENTS LOCATION PLAN
16	016	LINCOLN TO ORME - CHANNEL PLAN - STA 0+00-5+00
17	017	LINCOLN TO ORME - CHANNEL PLAN - STA 5+00-8+00
18	018	LINCOLN TO ORME - BIG BLOCK WALL PROFILE LEFT AND RIGHT - STA 0+00-8+00
19	019	LINCOLN TO ORME - CHANNEL CROSS SECTIONS - 0+50-2+00 AND TYPICAL SECTION
20	020	LINCOLN TO ORME - CHANNEL CROSS SECTIONS - 2+50-4+00
21	021	LINCOLN TO ORME - CHANNEL CROSS SECTIONS - 4+50-6+00
22	022	LINCOLN TO ORME - CHANNEL CROSS SECTIONS - 6+50-8+00
23	023	LINCOLN TO ORME - STORM SEWER OUTFALLS - PLAN AND PROFILES
24	024	LINCOLN TO ORME - STORM SEWER OUTFALLS - PLAN AND PROFILES
25	025	LINCOLN TO ORME - STORM SEWER OUTFALLS - PLAN, PROFILE AND DETAILS
26	026	LINCOLN TO ORME - MODIFIED CITY OF WICHITA STANDARD HEADWALL DETAILS
27	027	LINCOLN TO ORME - CULVERT PLAN AND PROFILE - STA. 8+00-13+50
28	028	LINCOLN TO ORME - CROSS SECTIONS - 8+50-10+50 AND DETAILS
29	029	LINCOLN TO ORME - CROSS SECTIONS - 11+00-13+15.71
30	030	LINCOLN TO ORME - CULVERT SECTIONS AND DETAILS
31	031	LINCOLN TO ORME - CITY OF WICHITA STANDARD DETAIL - TYPICAL 31' B-B PAVEMENT DETAILS
32	032	LINCOLN TO ORME - CROSS SECTIONS - DETAILS
33	033	LINCOLN TO ORME - CITY OF WICHITA STANDARD - TYPE 1 CURB INLET
34	034	LINCOLN TO ORME - CHANNEL PLAN - STA. 13+50-18+45.63
35	035	LINCOLN TO ORME - CROSS SECTIONS - 13+50-15+50
36	036	LINCOLN TO ORME - CROSS SECTIONS - 16+00-17+29.20
37	037	LINCOLN TO ORME - CONFLUENCE - PLAN, PROFILE, AND TYPICAL SECTION
38	037A	LINCOLN TO ORME - CONFLUENCE - CROSS SECTIONS
39	038	LINCOLN TO ORME - HAMMER HEAD - SITE PLAN AND DETAIL
40	039	LINCOLN TO ORME - PLANTING AND SEEDING - OVERALL SITE PLAN
41	040	LINCOLN TO ORME - PLANTING AND SEEDING - PLANT MATERIAL LIST
42	041	LINCOLN TO ORME - PROJECT CONSTRUCTION SIGN LAYOUT



VICINITY MAP
NO SCALE



LOCATION MAP
NO SCALE



UTILITY CONTACTS

GAS:
AQUILA - 1-800-DIG-SAFE

ELECTRIC:
WESTAR ENERGY - 1-800-LIGHT-KS

PHONE:
AT&T - 1-800-464-7928

CABLE:
COX CABLEVISION
701 E. DOUGLASS
(316) 265-1300

WATER AND SEWER:
WICHITA WATER UTILITIES
455 N. MAIN
WICHITA, KANSAS 67201
(316) 265-1300



CALL BEFORE YOU
DIG-DRILL-BLAST
800-344-7233 (DIG-SAFE)
(316) 687-3753 (FAX)

THE UTILITIES AS SHOWN ON THIS DRAWING WERE DEVELOPED FROM THE INFORMATION AVAILABLE. THIS IS NOT IMPLIED NOR INTENDED TO BE THE COMPLETE INVENTORY OF UTILITIES IN THIS AREA. IT IS THE CONTRACTOR'S RESPONSIBILITY TO VERIFY THE LOCATION OF ALL UTILITIES (WHETHER SHOWN OR NOT) AND PROTECT SAID UTILITIES FROM ANY DAMAGE.

KANSAS ONE CALL SYSTEM, INC.

