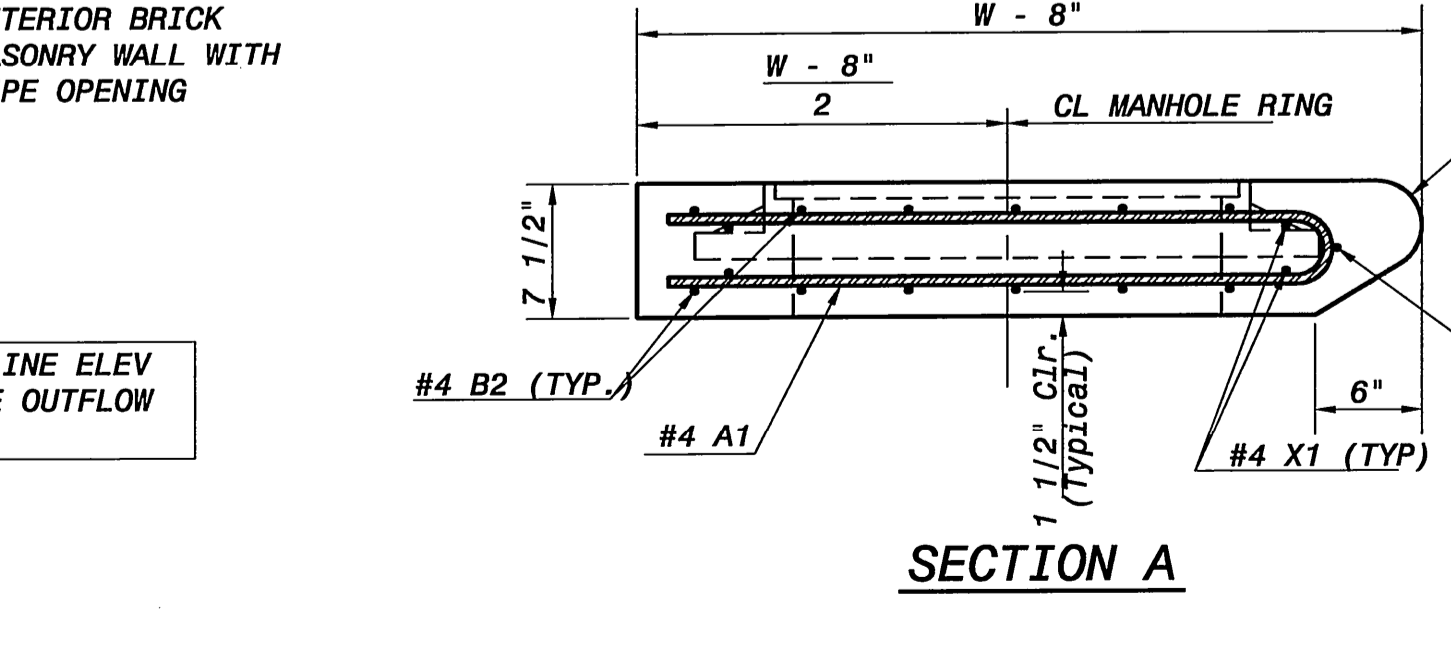
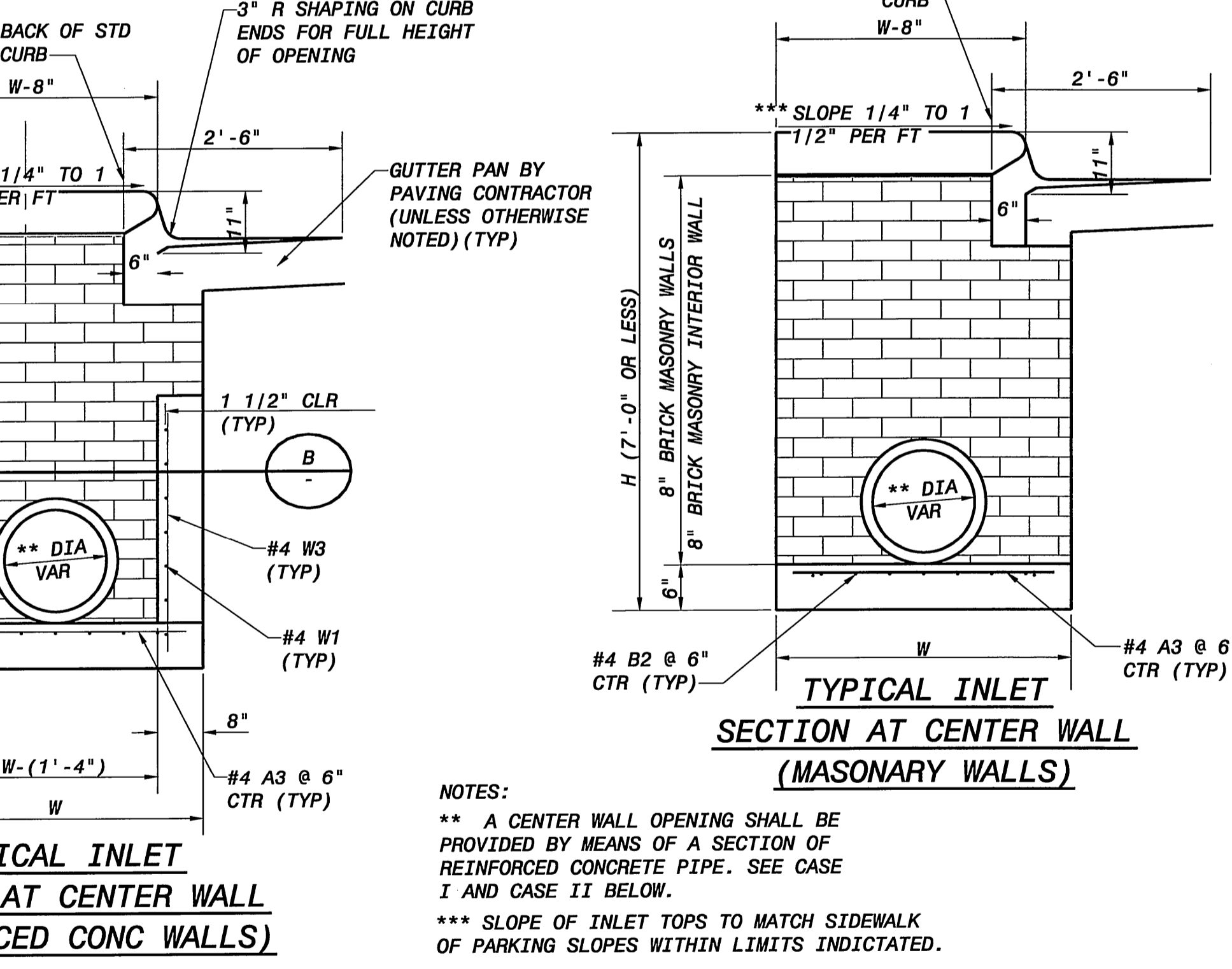


INLET FRAME WEIGHT = 180 LBS

\*SEE CITY OF WICHITA STANDARD MANHOLE RING AND COVER DETAIL SHEET FOR COVER DETAILS TO BE USED WITH INLET FRAME.



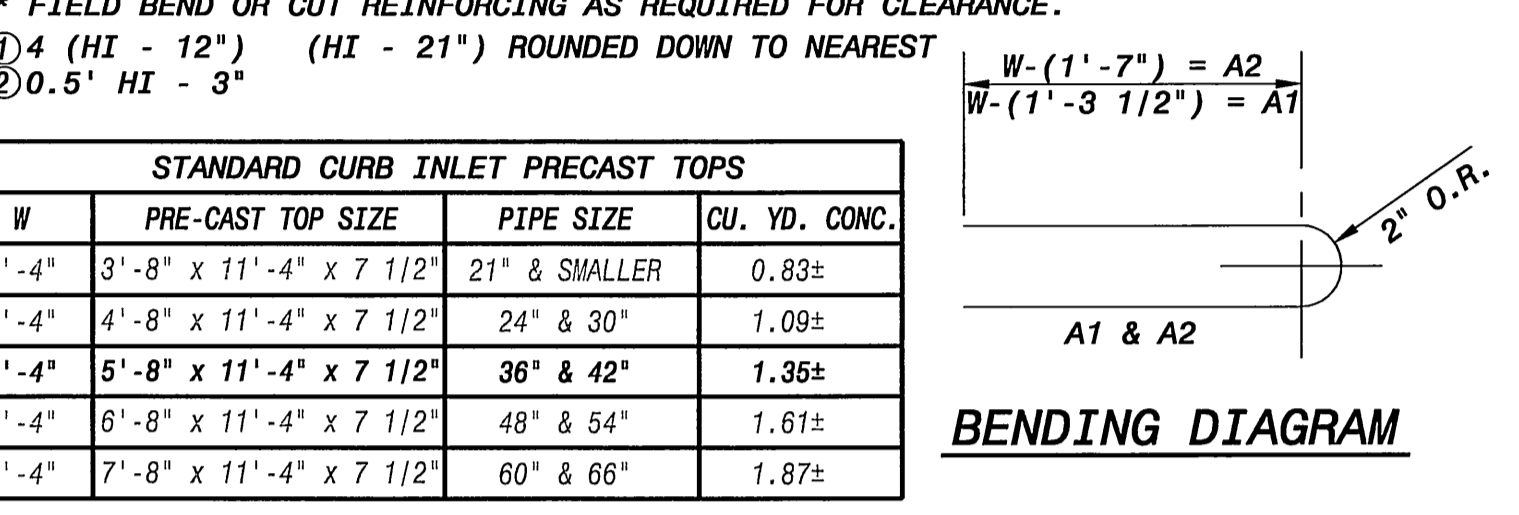
**PRECAST SLAB AND FLOOR REINFORCING**

MARK	SIZE	W = 4'-4"		W = 5'-4"		W = 6'-4"		W = 7'-4"		W = 8'-4"	
		NO.	LENGTH	NO.	LENGTH	NO.	LENGTH	NO.	LENGTH	NO.	LENGTH
A1	#4	13	6'-7"	13	8'-7"	13	10'-7"	13	12'-7"	13	14'-7"
A2	#4	4	6'-0"	4	8'-0"	4	10'-0"	4	12'-0"	4	14'-0"
A3	#4	23	4'-1"	23	5'-1"	23	6'-1"	23	7'-1"	23	8'-1"
B1	#4	7	9'-9"	7	9'-9"	7	9'-9"	7	9'-9"	7	9'-9"
B2	#4	23	11'-1"	29	11'-1"	35	11'-1"	41	11'-1"	47	11'-1"
X1	#4	16	3'-10"	16	4'-2"	16	4'-6"	16	4'-10"	16	5'-2"

**WALL REINFORCING**

MARK	SIZE	W = 4'-4"		W = 5'-4"		W = 6'-4"		W = 7'-4"		W = 8'-4"	
		NO.	LENGTH	NO.	LENGTH	NO.	LENGTH	NO.	LENGTH	NO.	LENGTH
W1	#4	1	11'-1"	1	11'-1"	1	11'-1"	1	11'-1"	1	11'-1"
W2	#4	1	4'-1"	1	5'-1"	1	6'-1"	1	7'-1"	1	8'-1"
W3	#4	52	2	56	2	60	2	64	2	68	2

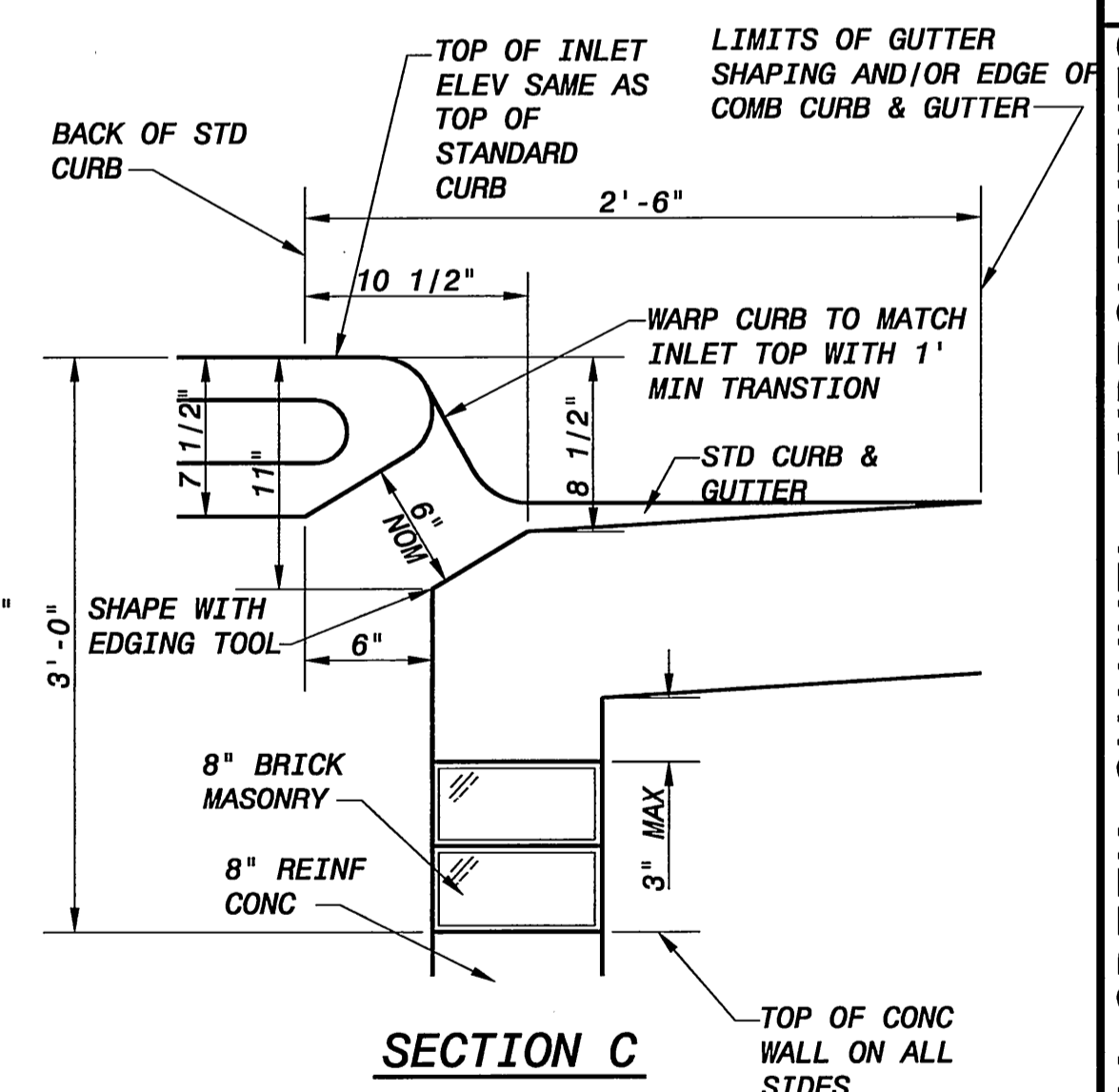


**STANDARD CURB INLET PRECAST TOPS**

W	PRE-CAST TOP SIZE	PIPE SIZE	CU. YD. CONC.
4'-4"	3'-8" x 11'-4" x 7 1/2"	21" & SMALLER	0.83±
5'-4"	4'-8" x 11'-4" x 7 1/2"	24" & 30"	1.09±
6'-4"	5'-8" x 11'-4" x 7 1/2"	36" & 42"	1.35±
7'-4"	6'-8" x 11'-4" x 7 1/2"	48" & 54"	1.61±
8'-4"	7'-8" x 11'-4" x 7 1/2"	60" & 66"	1.87±

**GENERAL NOTES:**

CONCRETE SHALL BE C.O.W. STANDARD PAVING MIX. ALL EXPOSED EDGES SHALL BE FINISHED WITH AN EDGING TOOL. REINFORCING BARS SHALL BE FIELD BENT OR CUT TO CLEAR PIPES AND INLET RINGS. ALL BARS ARE #4 BARS @ 6" SPACING AND SHALL HAVE A MINIMUM CLEARANCE OF 1 1/2" UNLESS OTHERWISE NOTED. FLOORS OF INLET SHALL BE SHAPED WITH 8 SACK SAND MIX CONCRETE TO INCREASE HYDRAULIC EFFICIENCY SUCH THAT THE INLET WILL BE SELF CLEANING BETWEEN ALL INLET AND/OR OUTLET PIPE(S). THE CONTRACTOR WILL BE REQUIRED TO TO CONSTRUCT 8" BRICK MASONRY WALLS BETWEEN THE INLET BASE AND TOP ON THIS INLET WHEN H=7'-0" OR LESS AND W=6'-4" OR LESS. WHEN W IS GREATER THAN 6'-4" AND H IS LESS THAN 7'-0", THE OUTSIDE INLET WALLS BELOW THE BRICK STACK SHALL BE REINFORCED CONCRETE CONSTRUCTION. CONCRETE TOPS TO BE INSTALLED ON THIN MORTAR CUSHION TO INSURE FULL SUPPORT ALONG BRICK WALLS. CONCRETE TOPS MAY BE CAST IN PLACE OR PRECAST. THE ENDS OF ALL PIPES INSTALLED IN INLETS SHALL BE CUT OFF FLUSH WITH THE INSIDE FACE OF THE INLET WALL. THIS DETAIL IS IDENTICAL TO THE STANDARD DETAIL DRAWING EXCEPT THAT THE GUTTER TRANSITION LENGTH IS INCREASED FROM 2'-0" TO 3'-6".



4 DEC  
3 DEC  
2 DEC  
1 DEC

03/13/09 FINAL - CONSTRUCTION SET  
2/13/09 100% SUBMITTAL  
11/21/07 90% SUBMITTAL - FOR REVIEW ONLY  
8/31/07 70% SUBMITTAL - FOR REVIEW ONLY

DATE: 13 MAR 2009

DESIGNED: CITY OF WICHITA  
DETAILED: CITY OF WICHITA  
CHECKED: CITY OF WICHITA  
APPROVED:

PROJECT NO. 143234

033 SHEET 33 OF 42

**BLACK & VEATCH**  
Building a world of difference  
Kansas City, Missouri

**DRY CREEK CHANNEL IMPROVEMENTS**  
WICHITA, KANSAS  
LINCOLN TO ORME  
CITY OF WICHITA STANDARD  
TYPE 1 CURB INLET