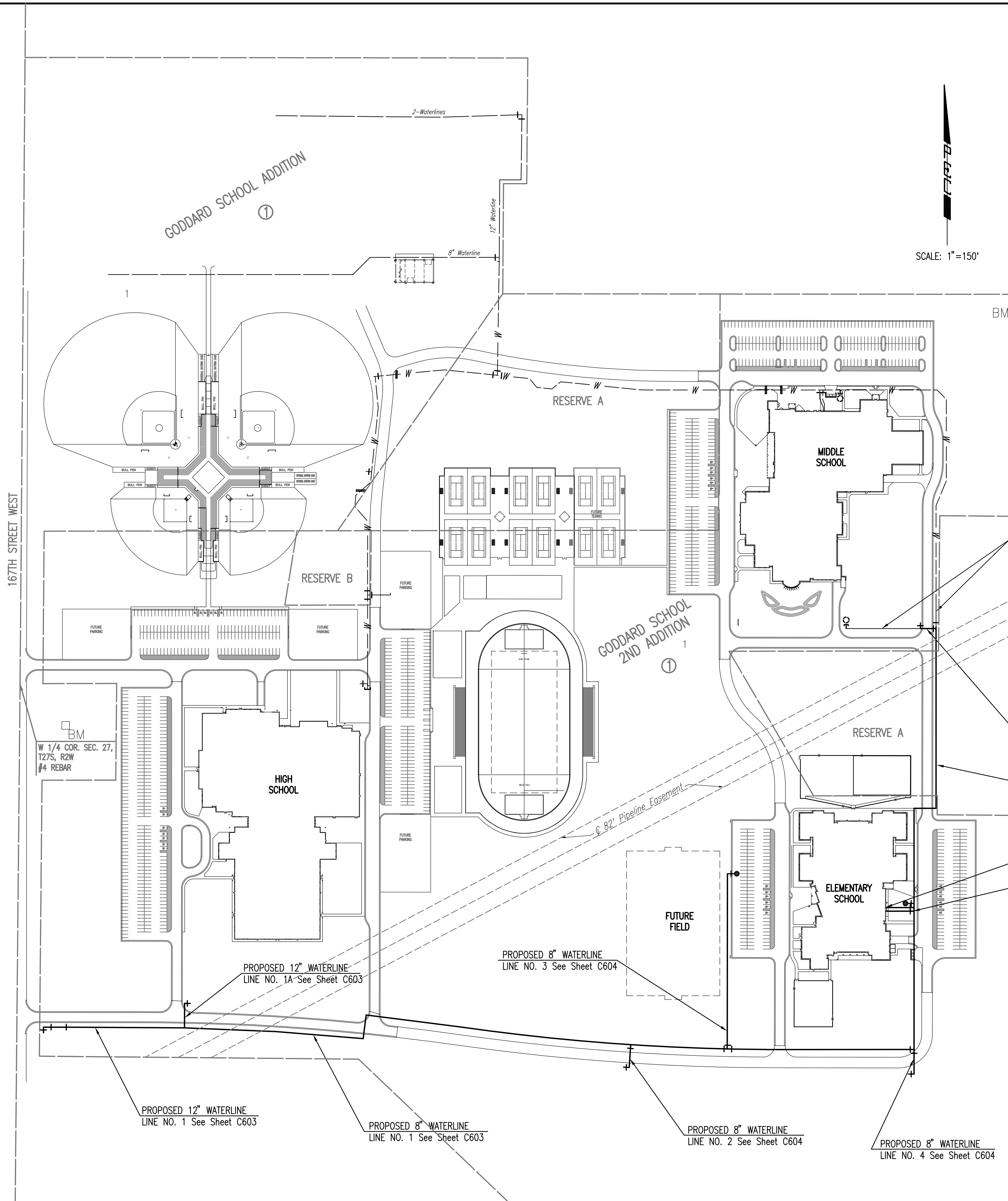


Saved: 01-06-2009 8:14:18 AM by: R/W
 Plot Scale: 1:150 01-21-2009 12:01:00 PM
 Q:\2009\08429\DWG\CHANGE ORDER\1\PPW\08429-C-602-PPW KEY MAP and GENERAL NOTES



SCALE: 1"=150'



GENERAL NOTES

1. ALL ELEVATIONS SHOWN ARE USGS DATUM.
2. CONTRACTOR WILL BE REQUIRED TO PROVIDE A MINIMUM ADVANCE NOTICE OF SEVENTY-TWO (72) HOURS TO UTILITY COMPANIES PRIOR TO STARTING ANY EXCAVATION AS FOLLOWS:
 KANSAS ONE-CALL 687-2470
 THE CONTRACTOR MUST NOTIFY THE FOLLOWING IN CASE OF AN EMERGENCY:
 COX COMMUNICATIONS 262-0661
 KANSAS GAS SERVICE 832-3169
 WESTAR ENERGY 383-8600
 BLACK HILLS ENERGY 1(800)-527-0357
 AT&T 1(800)-870-8390
 CITY OF WICHITA WATER DEPARTMENT 262-6000
 CITY OF WICHITA SEWER MAINTENANCE 262-6000
3. THE CONTRACTOR SHALL CONTACT THE FOLLOWING AT LEAST 72 HOURS PRIOR TO BEGINNING CONSTRUCTION TO ADVISE THEM OF THE INTENDED WORK AND OF HIS PROPOSED SCHEDULE:
 QUEST MIDSTREAM PARTNERS
 JOE FOWLER, FIELD SUPERVISOR 1(913)-764-6015
 CONOCOPHILLIPS
 RUSTY LEE, AREA SUPERVISOR 1(316)-681-20811 EXT. 11
4. ALL WATER MAINS AND APPURTENANCES SHALL BE INSTALLED IN ACCORDANCE WITH CITY OF WICHITA, KANSAS STANDARD SPECIFICATIONS.
5. THE WATER MAIN SHALL BE CONSTRUCTED ON THE ALIGNMENT SHOWN BY THE PLANS. TREES AND SHRUBS IN PUBLIC RIGHT-OF-WAY WHICH ARE IN DIRECT CONFLICT WITH PROPOSED NEW CONSTRUCTION SHALL BE REMOVED BY THE CONTRACTOR WITH THE ENGINEER'S APPROVAL. TREES AND SHRUBS WHICH ARE NOT IN DIRECT CONFLICT WITH PROPOSED NEW CONSTRUCTION SHALL BE SAVED AND PROTECTED FROM DAMAGE.
6. OPENING AND CLOSING WATER VALVES SHALL BE DONE SLOWLY TO PREVENT DAMAGE TO THE WATER DISTRIBUTION SYSTEM FROM WATER HAMMER. ALL VALVES CLOSED BY THE CONTRACTOR MUST BE REOPENED AS NEW CONSTRUCTION PERMITS. PROJECT INSPECTOR MUST ASCERTAIN THAT ANY VALVE CLOSED BY THE CONTRACTOR IS REOPENED. CONTRACTOR WILL BE PERMITTED TO OPERATE WATER VALVES ONLY WHEN THE PROJECT INSPECTOR ASSIGNED TO THE PROJECT IS PRESENT.
7. THE CONTRACTOR SHALL NOT START WORK ON THE PROJECT UNTIL THE PROJECT INSPECTOR IS ASSIGNED TO THE PROJECT AND IS PRESENT ON THE SITE. ANY WORK DONE WITHOUT INSPECTION WILL BE REQUIRED TO BE UNCOVERED FOR INSPECTION.
8. THE CONTRACTOR SHALL GIVE ALL PROPERTY OWNERS AND/OR TENANTS OF DEVELOPED PROPERTY DIRECTLY ADJUTING THE CONSTRUCTION OF THIS PROJECT A MINIMUM OF TEN (10) DAYS ADVANCE NOTICE PRIOR TO START OF CONSTRUCTION.
9. THE CONTRACTOR SHALL BE RESPONSIBLE FOR PRESERVING PROPERTY IRONS. THE CONTRACTOR SHALL BE REQUIRED TO RE-ESTABLISH ANY PROPERTY IRONS WHICH ARE DAMAGED OR DESTROYED BY HIS CONSTRUCTION OPERATIONS. SUCH IRONS SHALL BE RE-ESTABLISHED BY A LICENSED LAND SURVEYOR IN ACCORDANCE WITH STATE LAWS.
10. THE CONTRACTOR SHALL RESTORE ALL DITCHES, SWALES, ROAD SHOULDERS, ENTRANCES, AND BANKLINES TO THEIR ORIGINAL SLOPES AND GRADES EXCEPT AS SHOWN OTHERWISE.
11. INTERURBAN TRAFFIC GENERATED OUTSIDE THE PROJECT AREA AND LOCAL BUSINESS OR RESIDENTIAL TRAFFIC GENERATED WITHIN THE PROJECT AREA ARE TO BE CARRIED THROUGH CONSTRUCTION AS FURTHER PROMULGATED BY PROJECT SPECIAL PROVISIONS. THE CONTRACTOR SHALL UTILIZE BARRICADES, SIGNS, GUARDS, AND FLAGMEN IN ACCORDANCE WITH THE MANUAL ON UNIFORM TRAFFIC CONTROL DEVICES.
12. RUBBLE FROM THE REMOVAL OF MISCELLANEOUS STRUCTURES INCLUDING ANY TREES REMOVED AND TREE TRIMMINGS AND EXCESS EXCAVATED MATERIAL SHALL BE DISPOSED OF ON SITES PROVIDED BY THE CONTRACTOR. THESE SITES SHALL ALSO BE APPROVED BY THE ENGINEER AS TO SUITABILITY, APPEARANCE, AND SITE LOCATION. LOCATIONS THAT, IN THE OPINION OF THE ENGINEER, LEAVE AN UNSIGHTLY APPEARANCE WILL NOT BE APPROVED. ALL DISPOSAL SITES MUST BE APPROVED BY THE KANSAS DEPARTMENT OF HEALTH AND ENVIRONMENT. MATERIAL EITHER STOCKPILED OR DISPOSED OF IN A FLOOD PLAIN WILL REQUIRE A KANSAS STATE BOARD OF AGRICULTURE PERMIT. ANY MATERIAL DUMPED IN WATERS OF THE UNITED STATES OR WETLANDS IS SUBJECT TO U.S. CORPS OF ENGINEERS PERMITTING REGULATIONS. ANY MATERIAL BURIED OR STOCKPILED BEYOND APPROVED CONSTRUCTION LIMITS MAY REQUIRE ARCHAEOLOGICAL INVESTIGATIONS UNLESS BURIED IN A PREVIOUSLY APPROVED DISPOSAL LOCATION.
13. THE CONTRACTOR SHALL SEED ALL AREAS DISTURBED BY CONSTRUCTION ACTIVITIES WITH TEMPORARY RYE GRASS. RYE GRASS SEED SHALL BE PLANTED AT A MINIMUM RATE OF SIX (6) POUNDS PER ONE THOUSAND (1,000) SQUARE FEET. THIS TEMPORARY SEEDING MAY BE OMITTED ONLY IF OTHER SEEDING IS REQUIRED IN ACCORDANCE WITH GENERAL NOTE NO. 13 ABOVE. TEMPORARY SEEDING OR PERMANENT SEEDING/SODDING SHALL BE APPLIED WITHIN 14 DAYS AFTER THE AREA HAS BEEN DISTURBED.
14. EACH BIDDER SHALL VISIT THE SITE OF THE PROJECT BEFORE SUBMITTING THE PROPOSAL FOR THIS WORK SO THAT HE WILL BE FULLY INFORMED OF THE EXISTING FIELD CONDITIONS AND THE OBSTACLES WHICH MIGHT BE ENCOUNTERED. UPON AWARD OF THE CONTRACT THE CONTRACTOR WILL NOT BE GRANTED ANY ADDITIONAL COMPENSATION WITH REGARDS TO TIME AND MONEY FOR CONDITIONS THAT MAY HAVE BEEN EVALUATED DURING ANY INSPECTION OF THE SITE.
15. THE CONTRACTOR SHALL OBTAIN A COPY OF THE APPROVED NOTICE OF INTENT FOR STORM WATER DISCHARGES FROM THE SITE AND MEET THE REQUIREMENTS OF THE PERMIT. THE CONTRACTOR SHALL INSTALL AND/OR MAINTAIN EROSION CONTROL MEASURES AS REQUIRED PER THE NOI. A COPY WILL BE PROVIDED TO THE CONTRACTOR UPON CONTRACT AWARD.

PROPOSED WATERLINE (BY OTHERS)
 SEE EISENHOWER MIDDLE SCHOOL PLANS
 CITY OF WICHITA PRIVATE PROJECT NO. 1450 (607853)

CENTER OF SEC. 27, T27S, R2W
 3/4" IRON PIPE

PROPOSED 8" WATERLINE
 LINE NO. 6, See Sheet C605

PROPOSED 8" WATERLINE
 LINE NO. 1 See Sheet C604

FIRE DEPARTMENT CONNECTION
 BY MECHANICAL CONTRACTOR
 SEE MECHANICAL PLANS

PROPOSED 6" WATERLINE
 LINE NO. 5, See Sheet C604

PROPOSED 12" WATERLINE
 LINE NO. 1A See Sheet C603

PROPOSED 8" WATERLINE
 LINE NO. 3 See Sheet C604

PROPOSED 12" WATERLINE
 LINE NO. 1 See Sheet C603

PROPOSED 8" WATERLINE
 LINE NO. 1 See Sheet C603

PROPOSED 8" WATERLINE
 LINE NO. 2 See Sheet C604

PROPOSED 8" WATERLINE
 LINE NO. 4 See Sheet C604

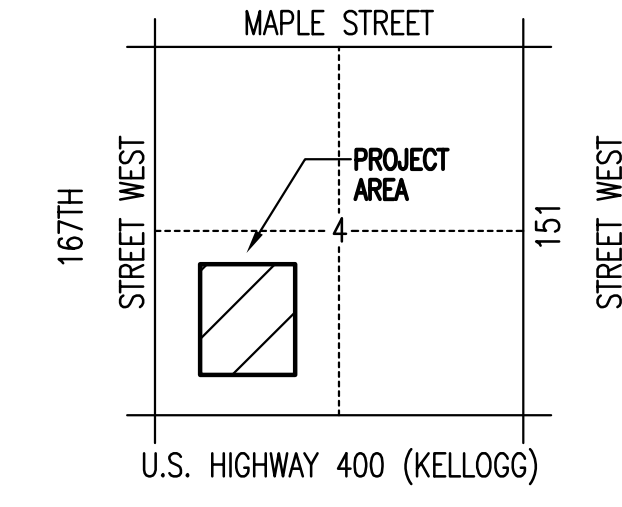
LEGEND

- EXISTING WATER MAIN
- PROPOSED WATER MAIN
- EXISTING WATER VALVE
- PROPOSED WATER VALVE
- EXISTING FIRE HYDRANT
- PROPOSED FIRE HYDRANT
- EXISTING BLOW OFF
- PROPOSED BLOW OFF
- WATER MAIN (BY OTHERS)
- FIRE HYDRANT (BY OTHERS)

BENCHMARK LIST

- BENCH MARK: CHISELED SQUARE ON WEST END OF WATER TOWER BASE, 100'S. AND 130' E. OF THE WEST QUARTER CORNER, SEC. 27, T27S, R2W.
ELEV.=1433.38 (M.S.L.)
- BENCH MARK: R&B BRASS DISK SET IN CONCRETE, 10' W. AND 1008' N. OF THE N.E. CORNER, SW1/4, SEC. 27, T27S, R2W.
ELEV.=1418.67 (M.S.L.)
- BENCH MARK: R&B BRASS DISK SET IN CONCRETE, 1658' W. AND 83' N. OF THE S.E. CORNER, SW1/4, SEC. 27, T27S, R2W.
ELEV.=1416.56 (M.S.L.)

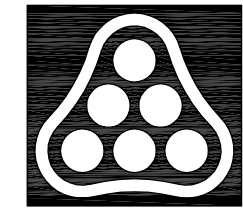
(SURVEY BY RUGGLES & BOHM P.A.)



VICINITY MAP

AS BUILT 4/15/2009

No.	Revision	By	Date
WATER DISTRIBUTION SYSTEM IMPROVEMENTS APOLLO ELEMENTARY SCHOOL - USD 265 GODDARD, KANSAS			
KEY MAP AND GENERAL NOTES JAMES L. ARMOUR, P.E. - CITY ENGINEER PRIVATE PROJECT NO. 1449 PFW (607853)			
Professional Engineering Consultants, P.A. 303 S. TOPEKA • WICHITA, KANSAS 67202 316-262-2691 • FAX 316-262-3003			
Designed by	RRY, MDK	Job No.	35-08429-259
Drawn by	TDS	Date	OCTOBER 2008
			Sht. C602



NOTE: WATERLINE VALVES TO BE OPERATED BY CONTRACTOR ONLY IF WATER DEPARTMENT REPRESENTATIVE IS ON SITE.