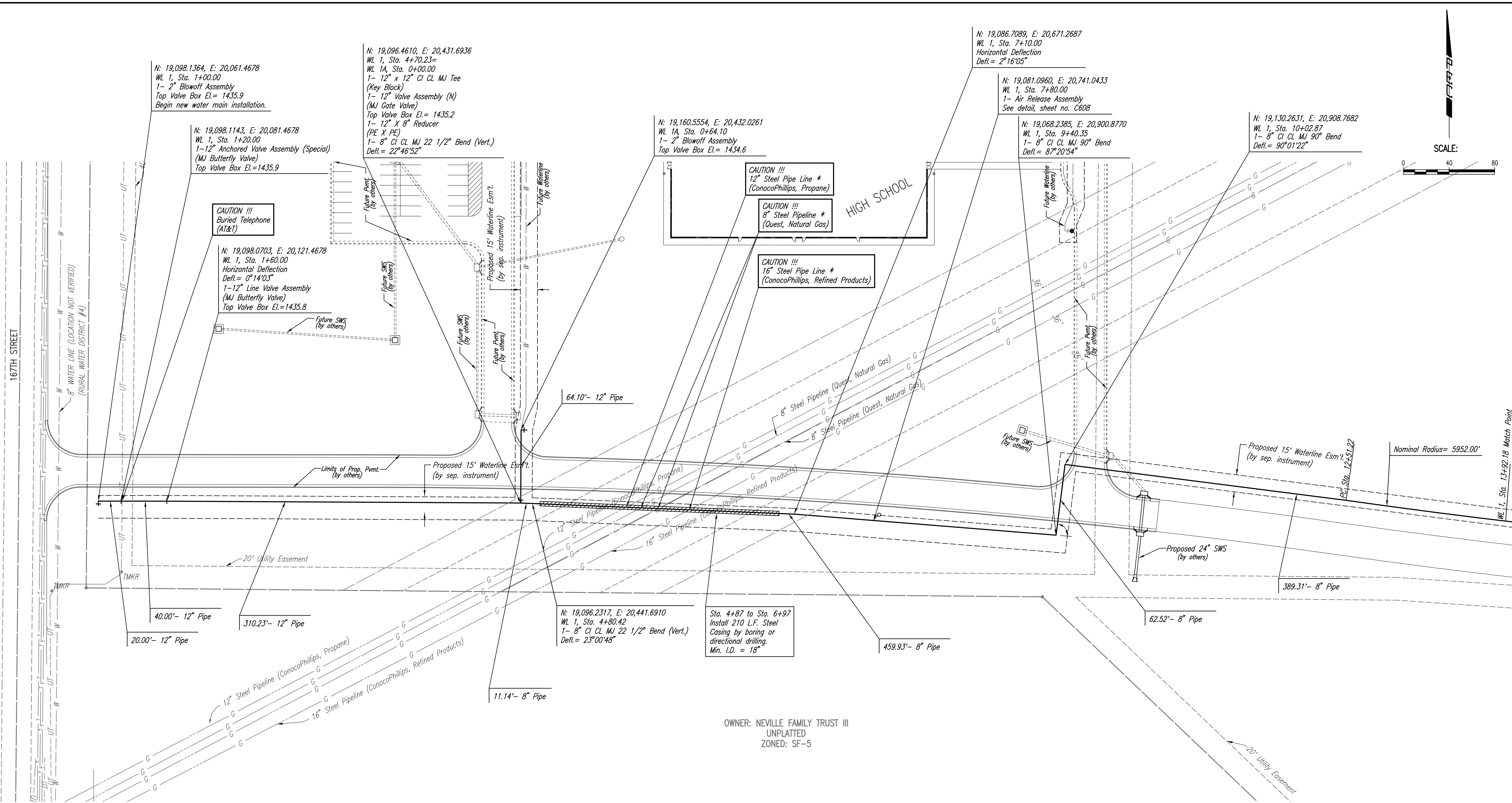


Saved: 01-06-2009 4:10:08 PM by CSJ  
 Plot Scale: 1"=40' 01-21-2009 12:00:39 PM  
 C:\2009\08429\DWG\CHANGE ORDER\1\PPM\08429-C-603-WATERLINE PLAN (WEST)

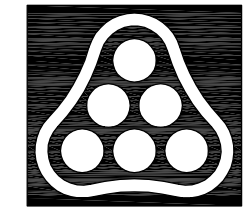


SCALE: 0 40 80

OWNER: NEVILLE FAMILY TRUST III  
 UNPLATTED  
 ZONED: SF-5

**\* CAUTION !!!**  
 COORDINATE ALL WORK ASSOCIATED WITH THE PIPELINE CROSSINGS WITH THE FOLLOWING:  
 CONOCO-PHILLIPS  
 MR. JIM NOLAND AT 918-661-0138  
 (PROVIDE AT LEAST 72 HOURS NOTICE)  
 QUEST PIPELINES (KPC)  
 MR. JOE FOWLER AT 913-764-6015  
 (PROVIDE AT LEAST 72 HOURS NOTICE)

AS BUILT 4/15/2009



No.	Revision	By	Date
No.	Revision	By	Date
WATER DISTRIBUTION SYSTEM IMPROVEMENTS APOLLO ELEMENTARY SCHOOL - USD 265 GODDARD, KANSAS <b>WATER LINE PLAN (WEST)</b> JAMES L. ARMOUR, P.E. - CITY ENGINEER PRIVATE PROJECT NO. 1449 PFW (607853)			
<b>Professional Engineering Consultants, P.A.</b> 303 S. TOPEKA • WICHITA, KANSAS 67202 316-262-2691 • FAX 316-262-3003			
Designed by	RRY, MDK	Job No.	35-08429-259
Drawn by	TDS	Date	OCTOBER 2008
			Sht. C603