

# STORM WATER SEWER TO SERVE Vatterott College

As Built Plans

Contractor: McCullough Excavating  
Inspector: Lyle Powers, Baughman Co.

pdf's by: KEK, 6/4/09

Lot 1 & 2, Block 3  
Private Project Number: 1906 PPS (607861)

CITY OF WICHITA, KANSAS

James Armour, P.E. City Engineer

August 2008

**Bench Mark:**

Railroad spike in power pole  
North of Lot 5  
Elev. = 1424.69 (NGVD29)

**Index**

Title Sheet	1
Storm Sewer Plan/Profile Sheet	2-3
Drainage Ditch Plan/Profile Sheet	4
Copy of Plats	5-6
Curb Inlet & Drop Inlet Details	Available on Request
BMP Erosion Details	Available On Request

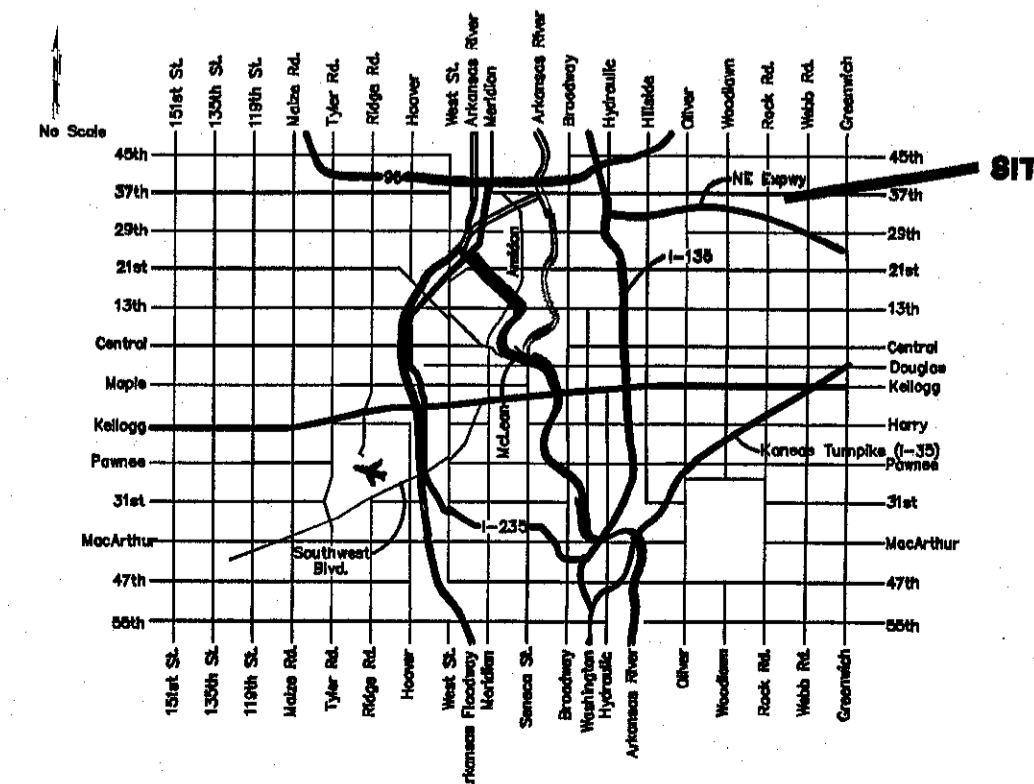
**Legal Description**

Lots 1, 2 and parts of 3, 13, 14 and 15 of Comtara Industrial Park Fourth Addition, an Addition To Wichita, Sedgwick County, Kansas. Part of Lots 1 and 2 of Comtara Industrial Park Second Addition, an Addition To Wichita, Sedgwick County, Kansas.

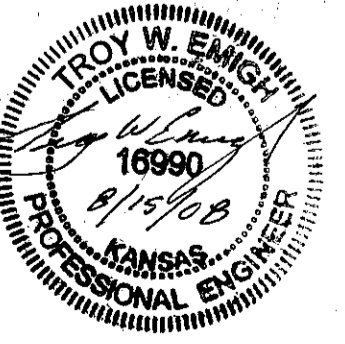
**General Notes**

- Contractor will be required to provide notice to utility companies a minimum of forty-eight (48) hours prior to any excavation, as follows:  
Kansas One-Call 687-2470  
The Contractor must notify the following in case of an emergency:  
Cox Communications 262-4270  
Kansas Gas Service Company 1-888-482-4950  
Westar Energy (Electric) 383-8650  
Aquila Energy (Gas) 1-800-303-0357  
Southwestern Bell Telephone Co. 1-800-286-8313  
City of Wichita Water Dept. (Water) 262-6000  
City of Wichita Sewer Maint. (SS) 262-6000  
City of Wichita Storm Sewer Maint. 268-4090  
City of Wichita Traffic Maint. 268-4034
- All disturbed R/W areas not intended for pavement or sidewalk construction shall be seeded with Kansas Premium Fescue Blend at a rate of 8 lb./1000 Sq. Ft., fertilized with a 16-20-6 ratio at a rate of 4 lb./1000 Sq. Ft., and mulched with Prairie Hay at a rate of 92 lb./1000 Sq. Ft. Mulch shall be "patted" with forks or punched into soil to reduce loss due to wind.
- Utility service lines, poles, valve boxes, meters, et cetera are to be adjusted as necessary by others prior to construction unless the plans specifically call for their adjustment by the Contractor or unless the plans specifically identify a utility to be adjusted by its owner during construction. Existing utilities and their location, as shown on the plans represent the best information obtainable for design and shall be field verified. The contractor will be required to work around existing utilities within the right-of-way which do not conflict with proposed construction.
- All storm sewers and appurtenances shall be installed in accordance with the most recent edition of City of Wichita, Kansas Standard Specifications for the Construction of City Projects.
- Contractor shall not start work on the project until the project inspector is assigned to the project and is present on the site. Contractor shall not start on the project until all necessary bonds and permits have been obtained. Bonds may include but are not limited to Statutory, Performance & Maintenance for areas in public right-of-way and easement. For projects within the City of Wichita contact Tom Mason (268-4574). Any work done without inspection will be required to be uncovered for inspection.
- Rubble from the removal of miscellaneous structures and excess excavation which is to be wasted shall be disposed of on sites to be provided by the Contractor. These sites shall be approved by the Engineer as to suitability, appearance and site location. Locations that, in the opinion of the Engineer, will leave an unsightly appearance will not be approved. All disposal sites must be approved by the Kansas Department of Health and Environment. Material either stockpiled or disposed of in a flood plain would require a Kansas State Board of Agriculture permit. Any material dumped in waters of the United States or wetlands is subject to U.S. Corps of Engineers permitting regulations. Any material buried or stockpiled beyond approved construction limits would require additional archaeological investigations unless buried in a previously approved borrow location.
- Properties within the project limits may have underground sprinkler systems which conflict with new construction. Contractor will be required to remove such improvements should they not be removed by their owner at the time of construction. The Contractor will be required to salvage all sprinkler heads and/or valves and give such material to their owner. Portions of underground sprinkler systems not in conflict with new construction shall be protected from damage and shall remain in place. All work in connection with underground sprinkler systems shall be considered as subsidiary to the contract pay items of work.

**Location Map**

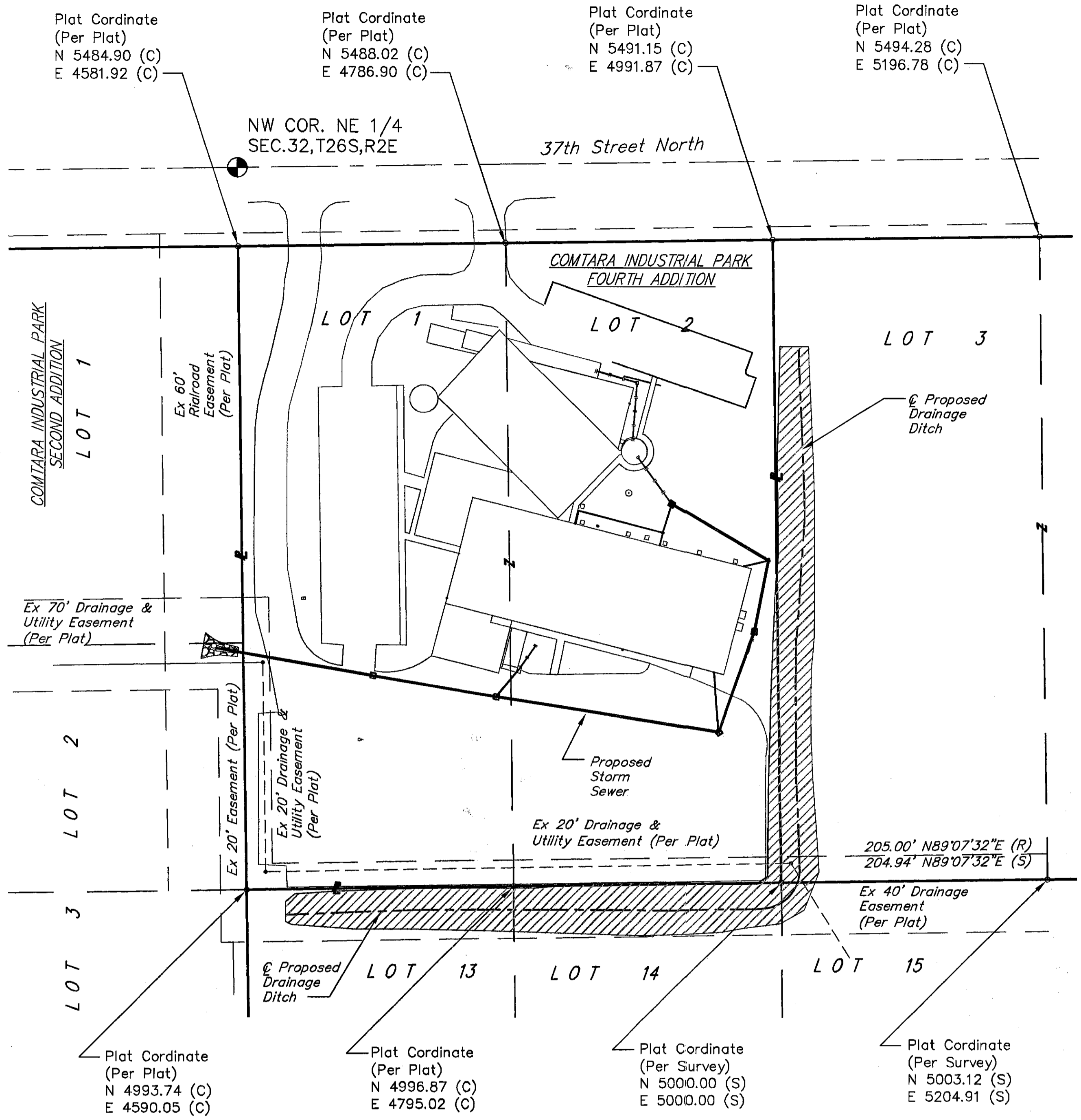


APPROVED AS NOTED  
BY CITY ENGINEER OF WICHITA  
Storm Sewers *Johnnie Killman, 8-22-08*  
NOTE TO CONTRACTORS  
Installation, inspection and testing for this project is to be provided by a Licensed Consulting Engineering Firm under contract with the Owner/Developer. Said inspection to be in accordance with the City of Wichita standard construction engineering practices and certified by a Licensed Professional Engineer. No work shall be performed in dedicated easements or public right-of-way by the Contractor without such inspection nor shall any work be commenced without written authorization by the City Engineer. All Construction and Materials shall comply with the City of Wichita Specifications and Standards (on file and available in the City Engineer's Office).



Baughman Company, P.A. 315 Ellis St. Wichita, KS 67211 P 316-262-7271 F 316-262-0149  
ENGINEERING | SURVEYING | PLANNING | LANDSCAPE ARCHITECTURE

**NOTE:**  
All plans dated before August 15, 2008 shall be VOID. This plan shall replace all prior plans.



Coordinate Legend  
(C) - Calculated for Plat  
(R) - Record  
(S) - Surveyed

