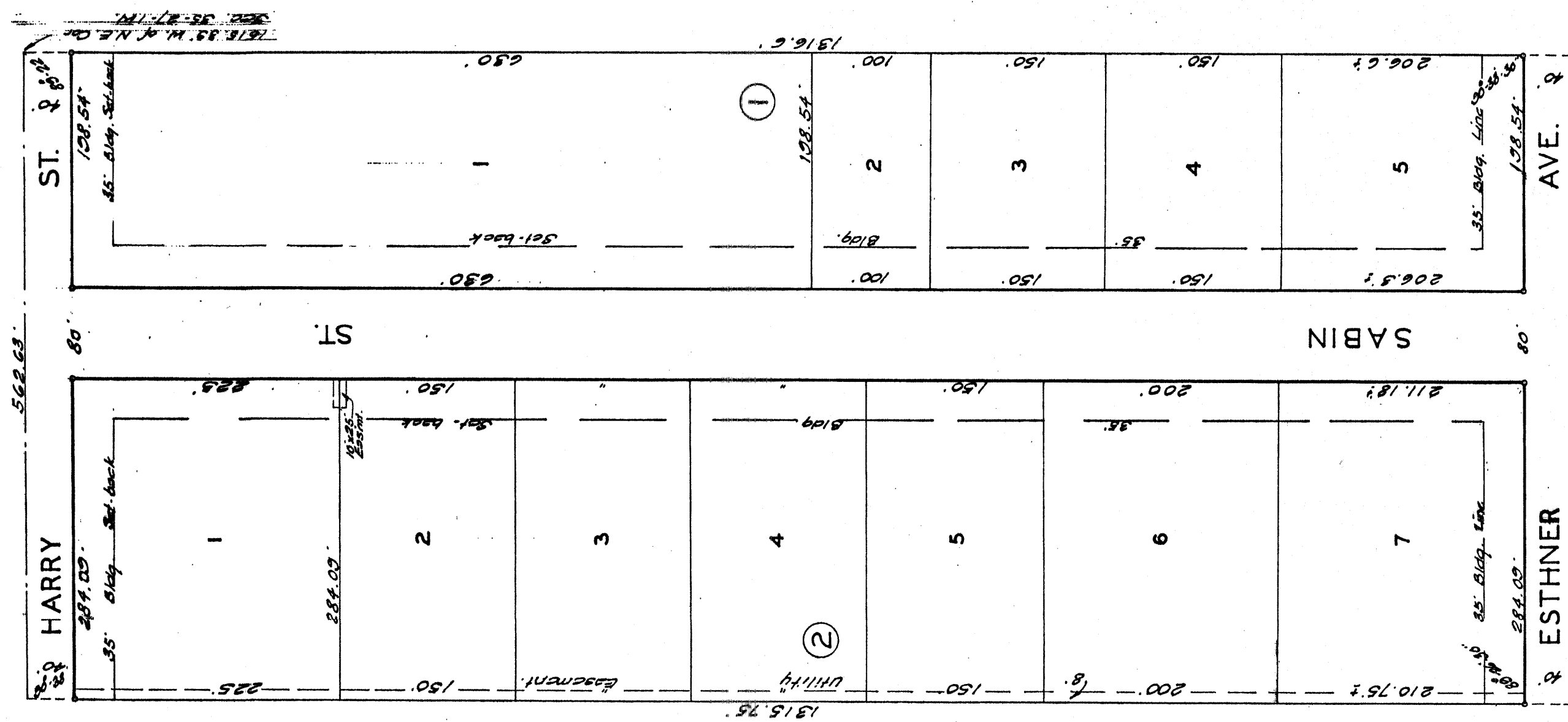


# WICHITA BUILDERS ADDITION

WICHITA KANSAS



State of Kansas } ss. Mc Baughman Company,  
Seagwick County } ss. Surveyors do hereby certify that we have  
surveyed and plotted "WICHITA BUILDERS  
ADDITION" Wichita, Kansas, and that the  
accompanying plat is a true and correct  
exhibit of the property surveyed desc-  
ribed as follows: The west 522.63 feet  
of the east 761.17 feet of the N.W. 1/4 of the  
N.E. 1/4 of Sec. 35, Twp. 27.5, R. 1-W.  
Baughman Company Surveyors.

19359

State of Kansas }  
Seagwick County } ss. This is to certify that the  
plat was filed for record in the office of the  
Register of Deeds this 12th day of August  
1967 at 2:30 o'clock P.M.; and is duly  
recorded.

By: Paul E. Steering Register of Deeds  
Deputy  
By: Paul B. Gilbert Deputy

45 MC 4-15

I know all men by these presents that we Wichita Builders Inc. a corporation by Martin Dondlinger, President and Leo Dondlinger, Secretary, have caused the land described in the surveyors certificate to be plotted into lots, blocks, streets and an avenue to be known as WICHITA BUILDERS ADDITION, Wichita, Kansas. Easements are hereby granted as indicated for the construction and maintenance of all public utilities. The streets and avenues are hereby dedicated to and for the use of the public.



Leo Dondlinger Secretary  
Martin Dondlinger President  
Wichita Builders Inc.

State of Kansas } ss. Be it remembered that Seagwick County } ss. on this 13th day of July, 1967 before me a notary public in and for said county and state came Martin Dondlinger, President and Leo Dondlinger, Secretary of Wichita Builders, Inc. to me known to be the same persons who executed the foregoing instrument of writing and duly acknowledged the execution of the same. In testimony whereof I have hereunto set my hand and affixed my notarial seal the day and year above written.



My Comm. Exp. July 2, 1968  
Leo Dondlinger Secretary  
Martin Dondlinger President  
Wichita Builders Inc.

This plat of "WICHITA BUILDERS ADDITION" Wichita, Kansas has been approved by the Wichita-Seagwick County Metropolitan Area Planning Commission, Wichita, Kansas and is hereby transmitted to the Board of Commissioners of the City of Wichita, Kansas, with the recommendation that such plat be approved as proposed. Dated this 13th day of July, 1967. Wichita-Seagwick County Metropolitan Area Planning Commission.



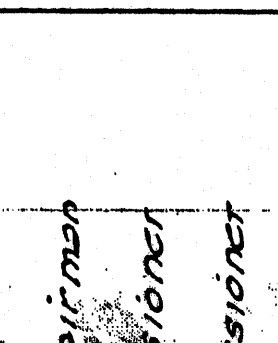
Robert A. Lambert Secretary  
Robert A. Lambert Secretary

Approved by the Board of City Commissioners this 22nd August 1967.



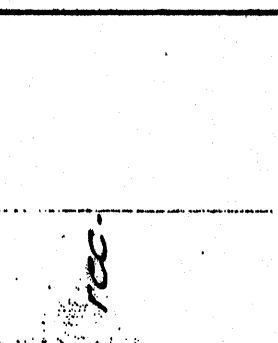
Donald C. Garlock Chairman  
Donald C. Garlock Chairman

Approved by the Board of County Commissioners this 12th day of August 1967.



Carl E. Deal Commissioner  
Carl E. Deal Commissioner

Approved by the Board of County Commissioners this 12th day of August 1967.



Paul B. Gilbert County Clerk  
Paul B. Gilbert County Clerk