

**GENERAL NOTES:**

1. Contractor will be required to provide notice to utility companies a minimum of forty-eight (48) hours prior to any excavation, as follows:

Kansas One-Call 687-2470

The Contractor must notify the following in case of an emergency:

- Cox Communications 262-4270
- Kansas Gas Service 1-888-482-4950
- Westar Energy 383-8650
- Aquila Energy 1-800-303-0357
- AT&T 268-2245
- City of Wichita Water Dept. 268-4563
- City of Wichita Sewer Maint. 268-4024
- City of Wichita Storm Sewer Maint. 268-4030
- City of Wichita Traffic Maint. 268-4034
- Conoco Phillips Pipeline Co. 1-877-267-2290
- Southern Star Pipeline Co. 529-6600
- Kinder-Morgan Pipeline Co. 1-888-844-5658

2. Utility service lines, poles, valve boxes, meters, and etcetera are to be adjusted as necessary by others prior to construction unless the plans specifically call for their adjustment by the Contractor or unless the plans specifically identify a utility to be adjusted by its Owner during construction. Existing utilities and their location, as shown on the plans, represent the best information obtainable for design. The Contractor will be required to work around existing utilities within the right-of-way which do not conflict with proposed construction.

3. Rubble from the removal of miscellaneous structures shall be disposed of on sites to be provided by the Contractor. These sites shall be approved by the Engineer as to suitability, appearance and site location. Locations, in the opinion of the Engineer, that will leave an unsightly appearance will not be approved. All disposal sites must be approved by the Kansas Department of Health and Environment. Material either stockpiled or disposed of in a flood plain would require a Kansas State Board of Agriculture permit. Any material dumped in waters of the United States or wetlands is subject to U.S. Corps. of Engineers permitting regulations. Any material buried or stockpiled beyond approved construction limits would require additional archaeological investigations unless buried in a previously approved borrow location.

4. Trees and shrubs in public right-of-way which are in direct conflict with proposed new construction shall be removed by the Contractor with the Engineer's approval. Trees and shrubs which are not in direct conflict with proposed new construction shall be saved and protected from damage.

5. The Contractor shall be responsible for preserving property irons. The Contractor will be required to re-establish any property irons which are damaged or destroyed by his construction operations. Such irons shall be re-established by a licensed Land Surveyor in accordance with state laws.

7. All existing and proposed erosion control measures including Silt Fencing, Erosion Control Mat, Straw Bales, Inlet Barriers, and Const. Entrance shall be maintained throughout construction by the Contractor and until project is accepted by the City of Wichita. The on-site Engineer shall complete weekly reports on the status of erosion control measures. The Contractor shall be required to comply with maintenance and/or replacement of erosion control measures as determined by the on-site Engineer until project is accepted by City of Wichita.

7. This project is subject to a current SWPP Plan. Contractor shall comply with any unusual requirements as necessary for site to be in compliance during construction.

8. All excess excavation shall remain on-site and shall be stockpiled or spread at a location determined by the Engineer.

9. The surrounding area shall be seeded and mulched as follows: (Permanent Seeding)

- SEED -- Kansas Premium Fescue Blend; 8#/1000 Sq. Ft.
- FERTILIZER -- 12-24-12 Ratio at 350 Lbs./Ac.
- MULCH -- 2 Tons Prairie Hay / Acre

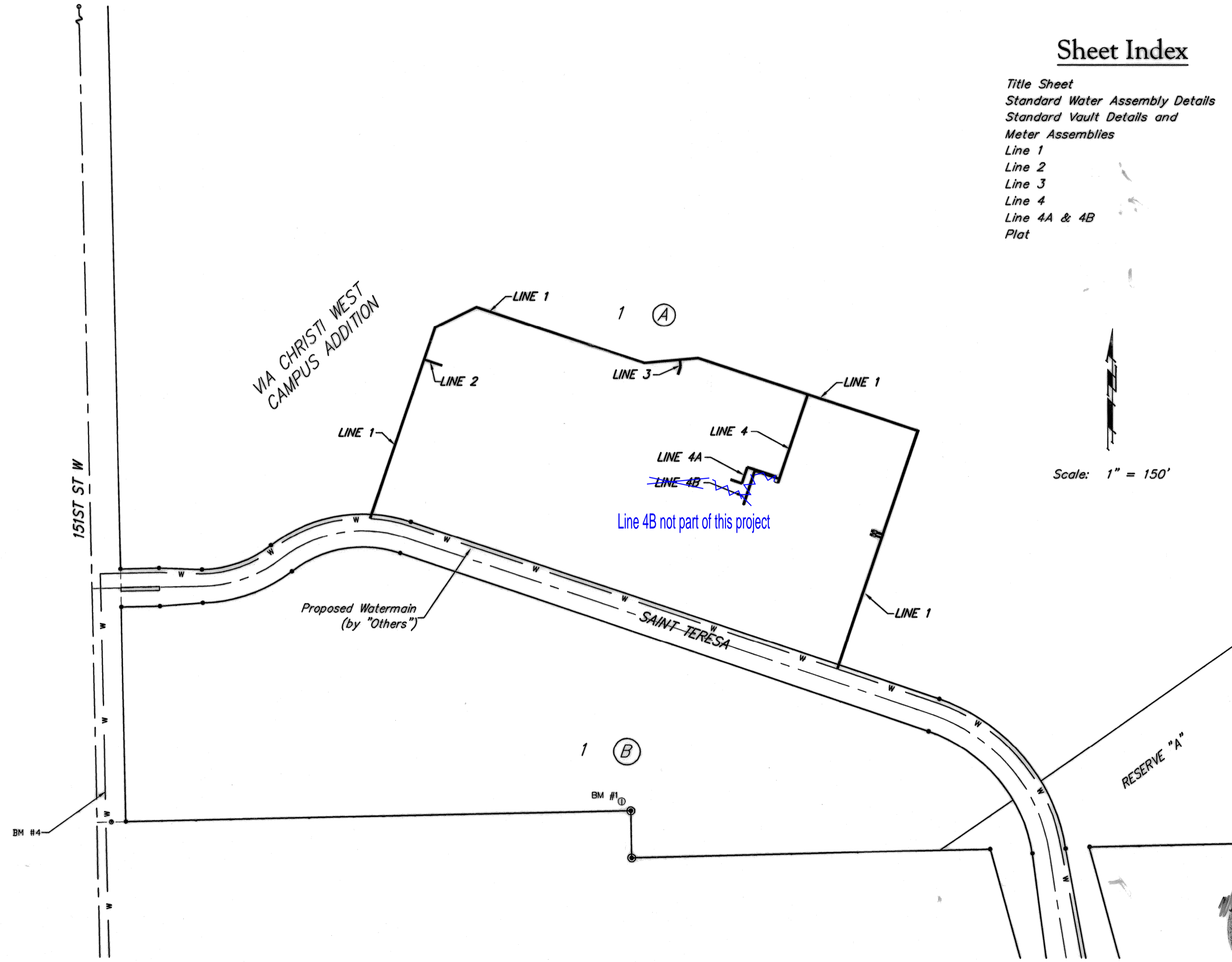
10. The Developer for this project is Via Christi Wichita Health Network, (316)268-5007.

**As Built Plans**  
 Contractor: Mies  
 Inspector: Don Eddingfield, Baughman Co.  
 pdf's by: KEK, 4/09

Mueller Valves & Fire Hydrants

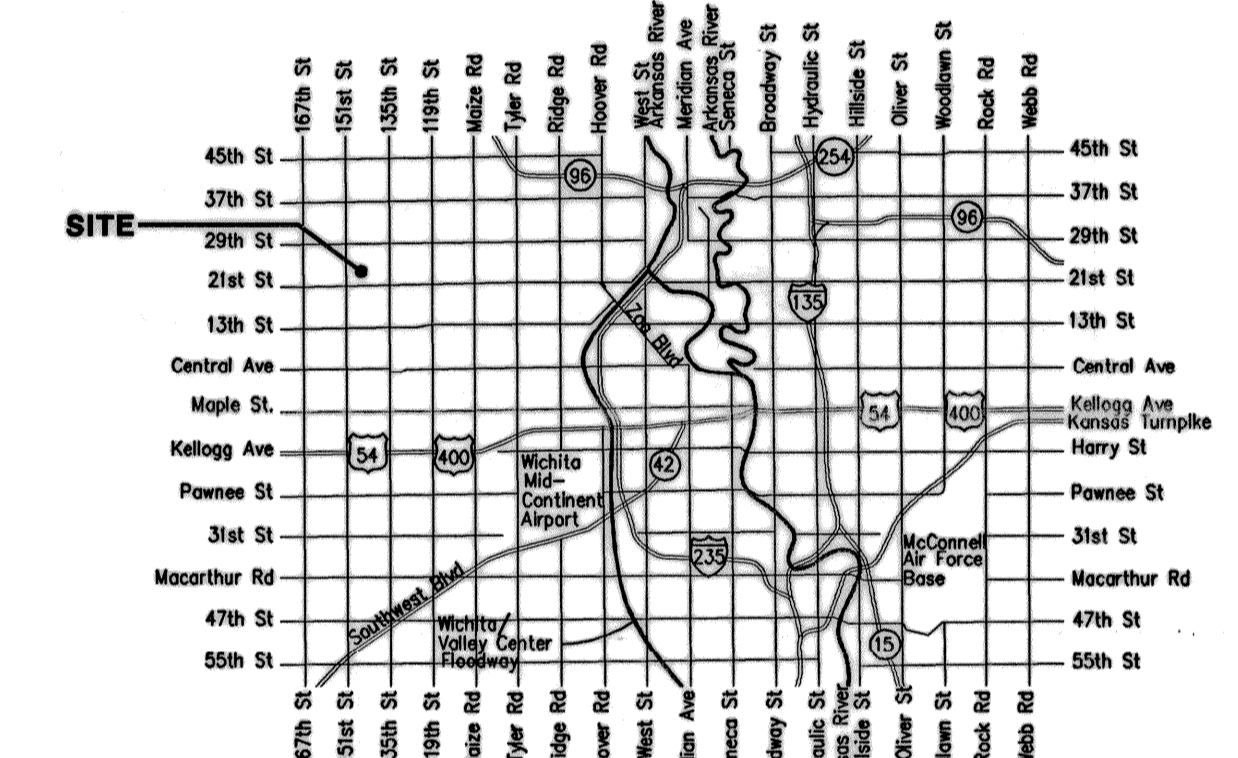
Private Project Water Line  
**WATER DISTRIBUTION SYSTEM**  
 to serve  
**VIA CHRISTI WEST**  
 CITY OF WICHITA, KANSAS

James L. Armour, P.E. City Engineer  
 Private Project Number: 1434 PPW (607853)



**Sheet Index**

Title Sheet	1
Standard Water Assembly Details	2
Standard Vault Details and Meter Assemblies	3
Line 1	4-6
Line 2	7
Line 3	8
Line 4	9
Line 4A & 4B Plat	10
	11

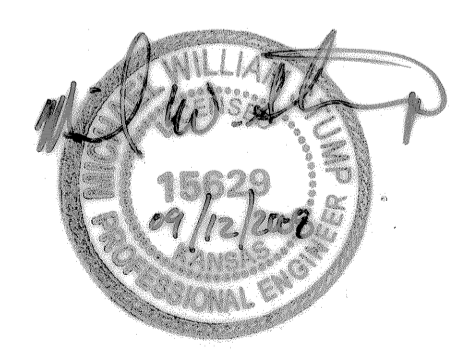


**Vicinity Map**

APPROVED AS NOTED  
 BY CITY ENGINEER OF WICHITA,  
 BY WICHITA WATER & SEWER DEPARTMENT,  
 & BY WICHITA FIRE DEPARTMENT

Public Works *[Signature]* 9/17/09  
 Water & Sewer *[Signature]*  
 Fire

**NOTE TO CONTRACTORS**  
 Public Property:  
 Inspection and testing for the waterline is to be provided by a Licensed Consulting Engineering Firm under contract with the Owner/Developer. Said inspection to be in accordance with the City of Wichita standard construction engineering practices and certified by a Professional Engineer Licensed in the state of Kansas. No work shall be performed in dedicated easements or public right-of-way by the Contractor without such inspection nor shall any work be commenced without written authorization by the City Engineer. All Construction and Materials shall comply with the City or Wichita Specifications and Standards (on file and available in the City Engineer's Office).



Baughman Company, P.A. 315 Ellis St. Wichita, KS 67211 P 316-262-7271 F 316-262-0149  
 ENGINEERING | SURVEYING | PLANNING | LANDSCAPE ARCHITECTURE