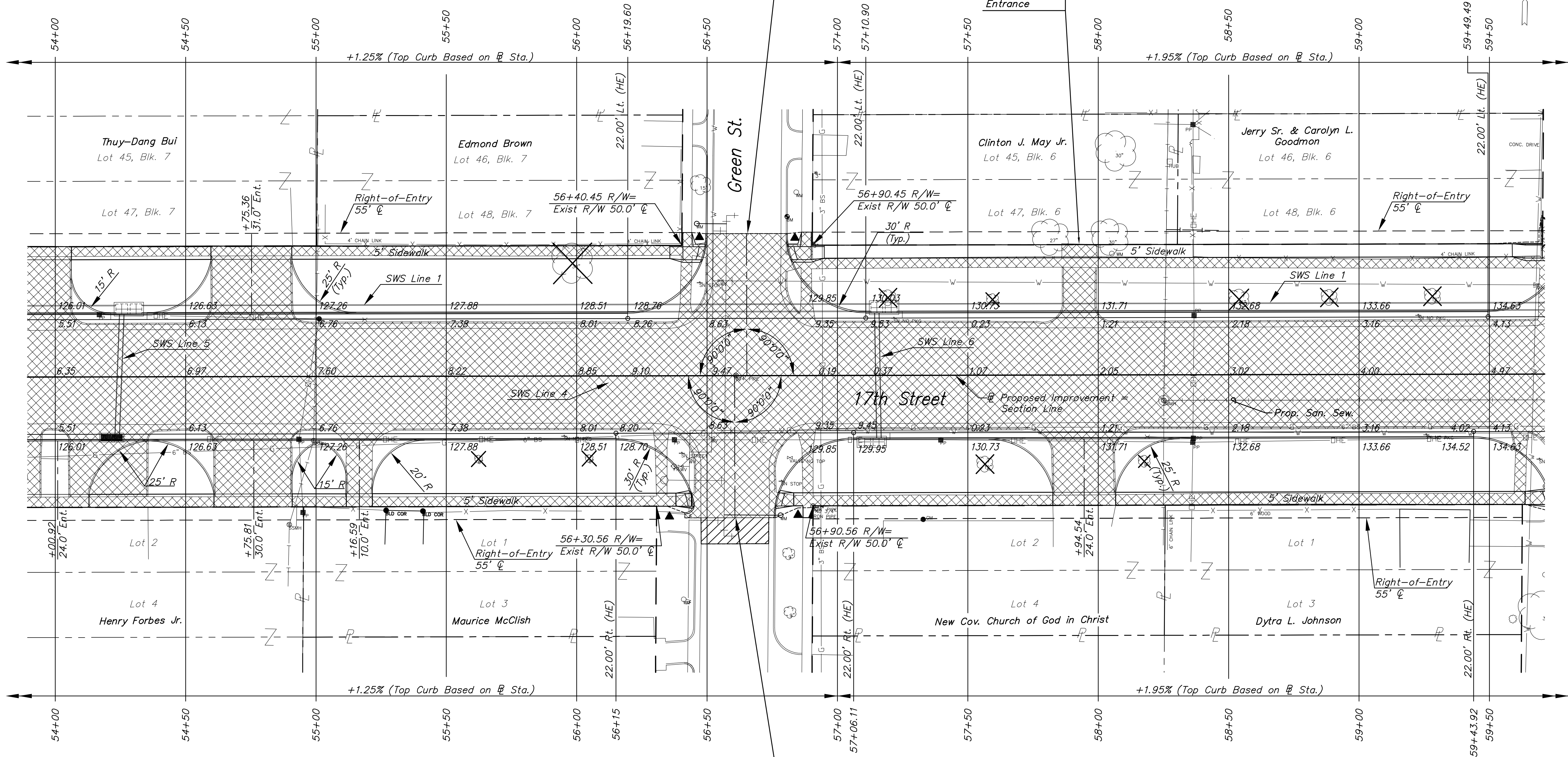
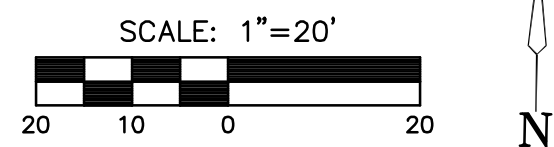


STATE	PROJECT NO.	YEAR	SHEET NO.	SHEETS
KANSAS	87 N-0349-01	2009	6	133

**MKEC**  
ENGINEERING  
CONSULTANTS, INC.  
411 N. WEBB ROAD  
WICHITA, KS. 67206  
316-684-9600

NE 1/4 Sec. 10, T27S, R1E  
WESTMORELAND  
ADDITION

NE 1/4 Sec. 10, T27S, R1E  
WESTMORELAND  
ADDITION



UTILITY ADJUSTMENTS				
STATION	OFFSET	EXISTING ELEVATION	PROPOSED ELEVATION	REMARKS
54+99.07	24.5' Rt.	128.02	126.75	Adj. San. Sew. Manhole *
56+37.31	34.7' Rt.	129.36	-	Remove Fire Hydrant
56+39.81	34.7' Rt.	129.58	-	Abandon/Remove WV Box
56+43.17	31.8' Rt.	128.72	-	Abandon/Remove WV Box
56+51.72	23.8' Rt.	128.74	-	Abandon/Remove WV Box
56+55.26	36.4' Lt.	128.92	-	Abandon/Remove WV Box
56+81.69	31.5' Rt.	130.16	129.35	Adj. Valve

WALTER MORRIS &  
SON'S 4TH ADDITION  
SE 1/4 Sec. 10, T27S, R1E

2ND FAIRMOUNT  
ORCHIDS ADDITION  
SE 1/4 Sec. 10, T27S, R1E

- LEGEND**
- Asphalt Hookup
  - Pavement/Walk Removal
  - Construct Wheelchair Ramp See Sht. No. 44

\* Replace Frame and Lid (Sanitary Sewer Bid Item)

**17th STREET  
FROM GROVE TO HILLSIDE**

**PAVING PLAN**  
Sta. 54+00  
to  
Sta. 59+50  
SHEET TITLE  
PROJECT NUMBER

JRA  
DESIGN BY  
JSB  
DRAWN BY  
JRA  
CHECKED BY

ISSUED  
May 28, 2009  
REVISED

SHEET NO.  
**6 of 133**

PLOT: Thursday, May 28, 2009 @ 10:28AM

J:\CIVIL\04179\DWG\PAV\04179P2.DWG