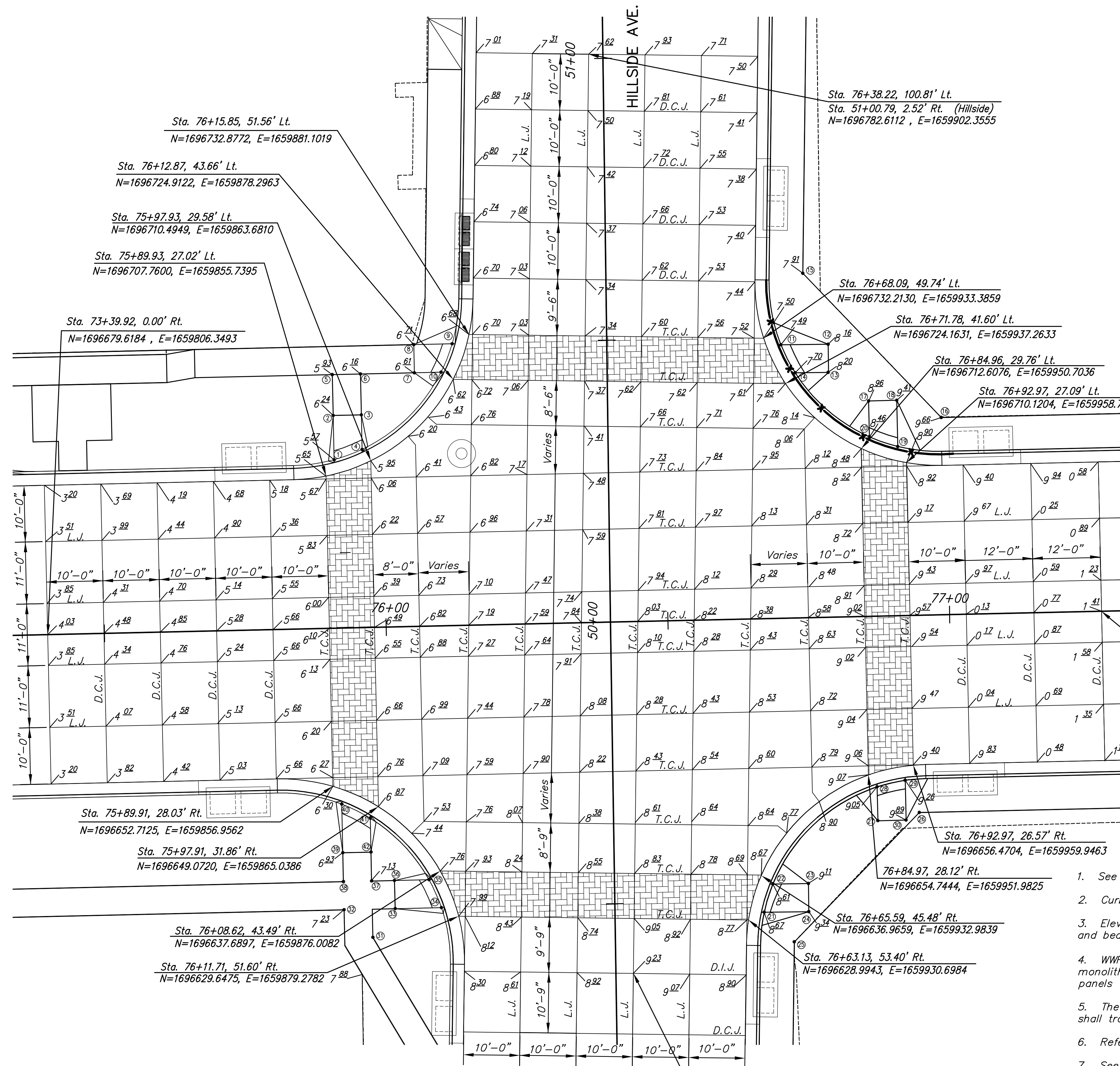
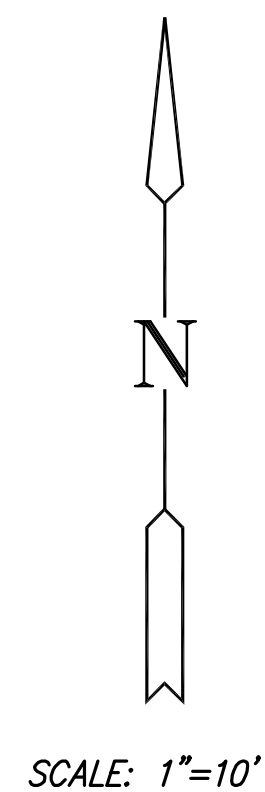


**17th STREET  
FROM GROVE TO HILLSIDE**

RAMP AND SIDEWALK POINT TABLE				
PT. NO.	STATION/OFFSET	NORTHING	EASTING	REMARKS
1	75+91.43, 29.88' Lt.	1696710.6516	1659857.1759	NW Quadrant at BC
2	75+91.44, 37.75' Lt.	1696718.5169	1659857.0021	NW Quadrant
3	75+96.44, 37.75' Lt.	1696718.6274	1659862.0008	NW Quadrant
4	75+96.43, 31.60' Lt.	1696712.4834	1659862.1366	NW Quadrant at BC
5	75+91.44, 45.00' Lt.	1696725.7669	1659856.8418	NW Quadrant
6	75+96.44, 45.00' Lt.	1696725.8794	1659861.8406	NW Quadrant
7	76+05.66, 45.00' Lt.	1696726.0947	1659871.4019	NW Quadrant
8	76+05.66, 50.00' Lt.	1696731.0940	1659871.3132	NW Quadrant
9	76+12.83, 50.00' Lt.	1696731.2472	1659878.1185	NW Quadrant at BC
10	76+10.75, 45.00' Lt.	1696726.2016	1659876.1464	NW Quadrant at BC
11	76+71.12, 48.52' Lt.	1696731.0614	1659936.4546	NE Quadrant at BC
12	76+79.50, 48.44' Lt.	1696731.1635	1659944.8325	NE Quadrant
13	76+79.45, 43.44' Lt.	1696726.1638	1659944.8934	NE Quadrant
14	76+73.55, 43.49' Lt.	1696726.0919	1659938.9914	NE Quadrant at BC
15	76+75.29, 61.14' Lt.	1696743.7456	1659940.3452	NE Quadrant
16	76+99.28, 35.00' Lt.	1696718.1645	1659964.9039	NE Quadrant
17	76+84.46, 38.21' Lt.	1696721.0944	1659952.0164	NE Quadrant
18	76+91.46, 38.21' Lt.	1696721.2049	1659957.0151	NE Quadrant
19	76+91.46, 30.02' Lt.	1696713.0174	1659957.1961	NE Quadrant at BC
20	76+86.46, 31.85' Lt.	1696714.7370	1659952.1569	NE Quadrant at BC
21	76+65.95, 52.08' Rt.	1696630.3581	1659933.4880	SE Quadrant at BC
22	76+67.60, 47.11' Rt.	1696635.3777	1659935.0299	SE Quadrant at BC
23	76+73.91, 47.17' Rt.	1696635.4546	1659941.3433	SE Quadrant
24	76+78.86, 52.17' Rt.	1696630.4550	1659941.4042	SE Quadrant
25	76+71.18, 57.46' Rt.	1696625.1081	1659938.8381	SE Quadrant
26	76+93.86, 35.00' Rt.	1696648.0623	1659961.0185	SE Quadrant
27	76+86.47, 36.29' Rt.	1696646.8071	1659953.6628	SE Quadrant
28	76+86.47, 30.28' Rt.	1696652.6192	1659953.5299	SE Quadrant at BC
29	76+91.47, 29.23' Rt.	1696653.7833	1659958.5054	SE Quadrant at BC
30	76+91.47, 36.29' Rt.	1696646.7167	1659958.6615	SE Quadrant
31	75+96.40, 55.00' Rt.	1696625.9038	1659864.0503	SW Quadrant
32	75+29.89, 50.00' Rt.	1696630.8235	1659860.4268	SW Quadrant
33	76+00.48, 50.00' Rt.	1696630.9944	1659868.0159	SW Quadrant
34	76+08.68, 50.00' Rt.	1696631.1804	1659876.2143	SW Quadrant at BC
35	76+06.59, 45.00' Rt.	1696636.1308	1659874.0175	SW Quadrant at BC
36	76+00.45, 45.00' Rt.	1696635.9925	1659867.8741	SW Quadrant
37	75+96.42, 45.03' Rt.	1696635.8997	1659863.7530	SW Quadrant
38	75+91.40, 45.00' Rt.	1696635.7888	1659858.8306	SW Quadrant
39	75+91.40, 39.86' Rt.	1696640.9237	1659858.7171	SW Quadrant
40	75+91.41, 31.23' Rt.	1696649.5564	1659858.5263	SW Quadrant at BC
41	75+96.41, 33.85' Rt.	1696647.0538	1659863.5828	SW Quadrant at BC
42	75+96.40, 39.87' Rt.	1696641.0342	1659863.7159	SW Quadrant



**LEGEND**

- D.I.J. Doweled Isolation Joint
- D.C.J. Doweled Contraction Joint
- T.C.J. Tied Construction Joint
- L.J. Longitudinal Joint
- 1<sup>18</sup> Surface Spot Elevation
- Direction of Surface Flow

**PAVING NOTES:**

- See Sheet No. 34 for joint details.
- Curb elevations shown are high edge.
- Elevations shown in paving brick inlay are for top of pavement; deduct thickness of paving brick and bedding for elevation at top of concrete.
- WWF 6"x12" w4xw4 wire mesh shall be installed in all Non-rectangular panels, all panels utilizing monolithic curb, all rectangular panels having a width to length ratio of 1:1.25 or greater, and in panels with valley gutter running through them.
- The cross slope of the asphalt pavement as it approaches the concrete intersection pavement shall transition as required to match the spot elevations shown on the concrete pavement.
- Refer to mainline profiles and typical sections for elevation on either side of the intersection.
- See Sheet No. 55 for utility fixture box-out details.
- Keyway not required on Contraction joints as shown on sheet 34.
- All joints within the intersection shall be tied construction joints.

**17th & Hillside  
Intersection  
Detail**

SHEET TITLE  
87 N-0349-01  
PROJECT NUMBER

JRA  
DESIGN BY  
JSB  
DRAWN BY  
JRA  
CHECKED BY

ISSUED  
May 28, 2009  
REVISED

SHEET NO.  
**32 of 133**