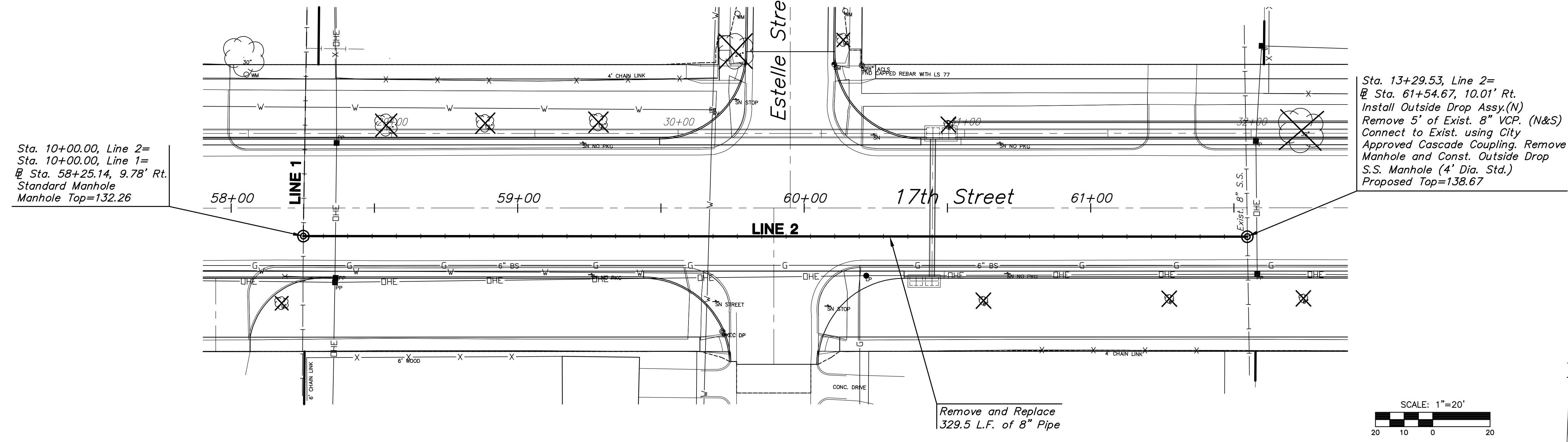


STATE	PROJECT NO.	YEAR	SHEET NO.	SHEETS
KANSAS	87 N-0349-01	2009	65	133

**MKEC**  
ENGINEERING  
CONSULTANTS, INC.  
411 N. WEBB ROAD  
WICHITA, K.S. 67206  
316-684-9600

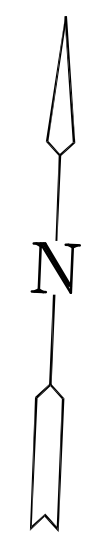
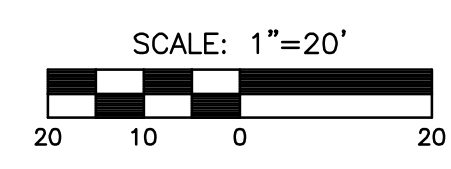
④ Service location. See Sht. 55 for Station and direction.



Sta. 10+00.00, Line 2=  
Sta. 10+00.00, Line 1=  
Sta. 58+25.14, 9.78' Rt.  
Standard Manhole  
Manhole Top=132.26

Sta. 13+29.53, Line 2=  
Sta. 61+54.67, 10.01' Rt.  
Install Outside Drop Assy(N)  
Remove 5' of Exist. 8" VCP. (N&S)  
Connect to Exist. using City  
Approved Cascade Coupling. Remove  
Manhole and Const. Outside Drop  
S.S. Manhole (4' Dia. Std.)  
Proposed Top=138.67

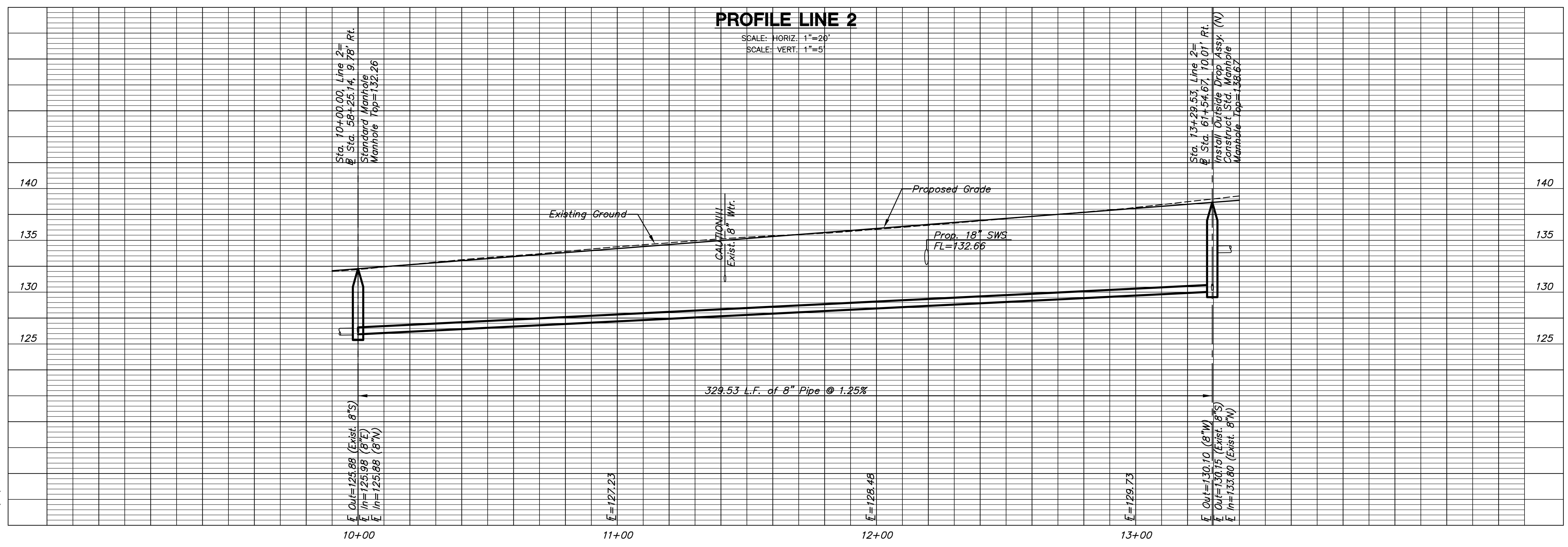
Remove and Replace  
329.5 L.F. of 8" Pipe



**PLAN LINE 2**

**PROFILE LINE 2**

SCALE: HORIZ. 1"=20'  
SCALE: VERT. 1"=5'



Sta. 10+00.00, Line 2=  
Sta. 58+25.14, 9.78' Rt.  
Standard Manhole  
Manhole Top=132.26

Sta. 13+29.53, Line 2=  
Sta. 61+54.67, 10.01' Rt.  
Install Outside Drop Assy. (N)  
Construct Std. Manhole  
Manhole Top=138.67

**17th STREET  
FROM GROVE TO HILLSIDE**

**Sanitary Sewer  
Line 2**  
SHEET TITLE  
87 N-0349-01  
PROJECT NUMBER

DESIGN BY: JRA  
DRAWN BY: JWC  
CHECKED BY: JRA

ISSUED: May 28, 2009  
REVISED:

SHEET NO.  
**65 of 133**

PLOTTED: Thursday, May 28, 2009 @ 10:44AM

J:\CIVIL\04179\WORK\SAN\SAN\04179\_B\_02.DWG