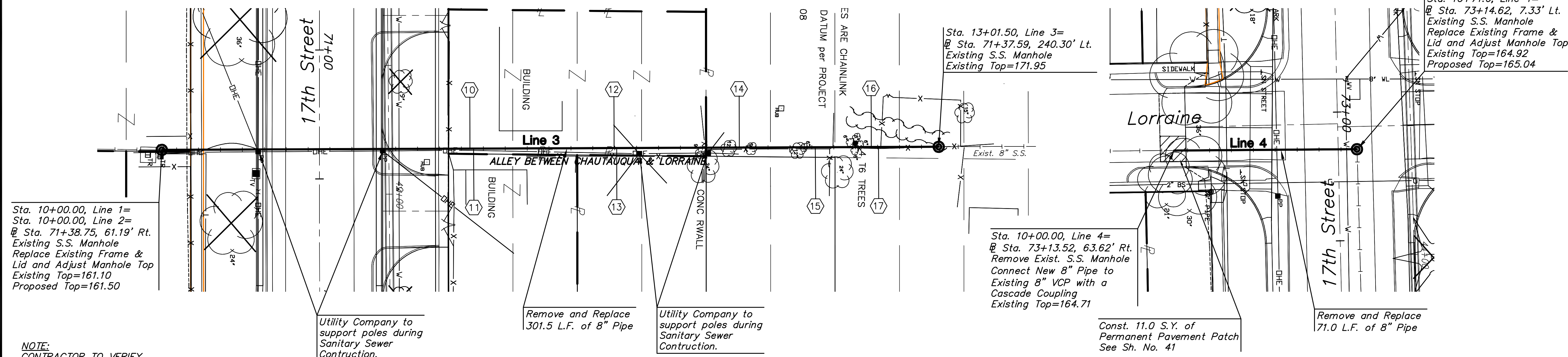
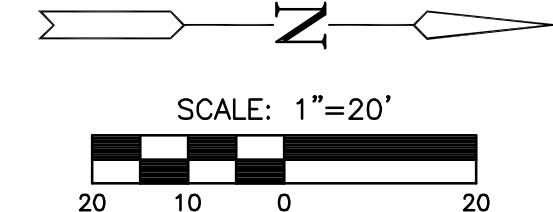
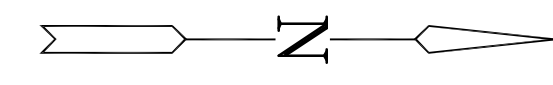


STATE	PROJECT NO.	YEAR	SHEET NO.	SHEETS
KANSAS	87 N-0349-01	2009	66	133

MKEC
ENGINEERING
CONSULTANTS, INC.

411 N. WEBB ROAD
WICHITA, KS. 67206
316-684-9600

④ Service location. See Sht. 55 for Station and direction.



Sta. 10+00.00, Line 1=
Sta. 10+00.00, Line 2=
@ Sta. 71+38.75, 61.19' Rt.
Existing S.S. Manhole
Replace Existing Frame &
Lid and Adjust Manhole Top
Existing Top=161.10
Proposed Top=161.50

Sta. 13+01.50, Line 3=
@ Sta. 71+37.59, 240.30' Lt.
Existing S.S. Manhole
Existing Top=171.95

Sta. 10+00.00, Line 4=
@ Sta. 73+13.52, 63.62' Rt.
Remove Exist. S.S. Manhole
Connect New 8" Pipe to
Existing 8" VCP with a
Cascade Coupling
Existing Top=164.71

Sta. 10+71.0, Line 4=
@ Sta. 73+14.62, 7.33' Lt.
Existing S.S. Manhole
Replace Existing Frame &
Lid and Adjust Manhole Top
Existing Top=164.92
Proposed Top=165.04

NOTE:
CONTRACTOR TO VERIFY
DEPTH AND LOCATION
OF EXISTING UTILITIES
PRIOR TO CONSTRUCTION.

Utility Company to
support poles during
Sanitary Sewer
Construction.

Remove and Replace
301.5 L.F. of 8" Pipe

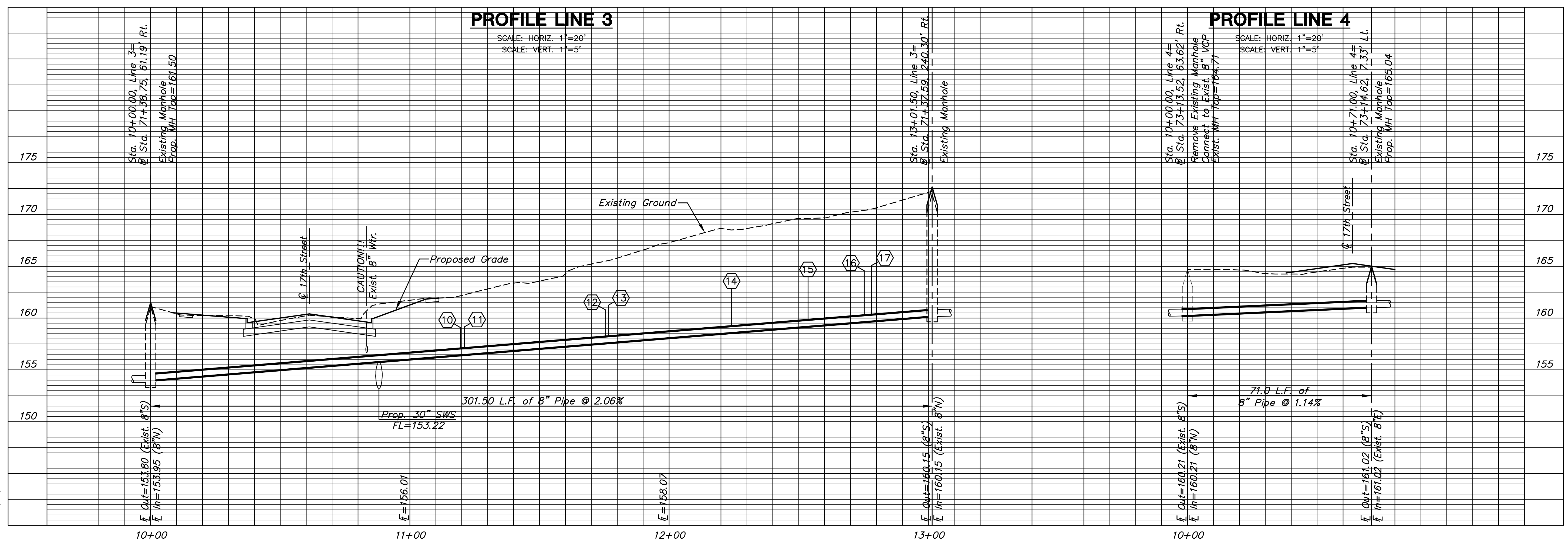
Utility Company to
support poles during
Sanitary Sewer
Construction.

Const. 11.0 S.Y. of
Permanent Pavement Patch
See Sh. No. 41

Remove and Replace
71.0 L.F. of 8" Pipe

PLAN LINE 3

PLAN LINE 4



PROFILE LINE 3

PROFILE LINE 4

**17th STREET
FROM GROVE TO HILLSIDE**

**Sanitary Sewer
Lines 3 and 4**
SHEET TITLE
87 N-0349-01
PROJECT NUMBER

DESIGN BY: JRA
DRAWN BY: JWC
CHECKED BY: JRA

ISSUED: May 28, 2009
REVISED:

SHEET NO.
66 of 133

PLOTTED: Thursday, May 28, 2009 @ 10:45AM

J:\CIVIL\04179\WORK\SAN\04179_B_03.DWG