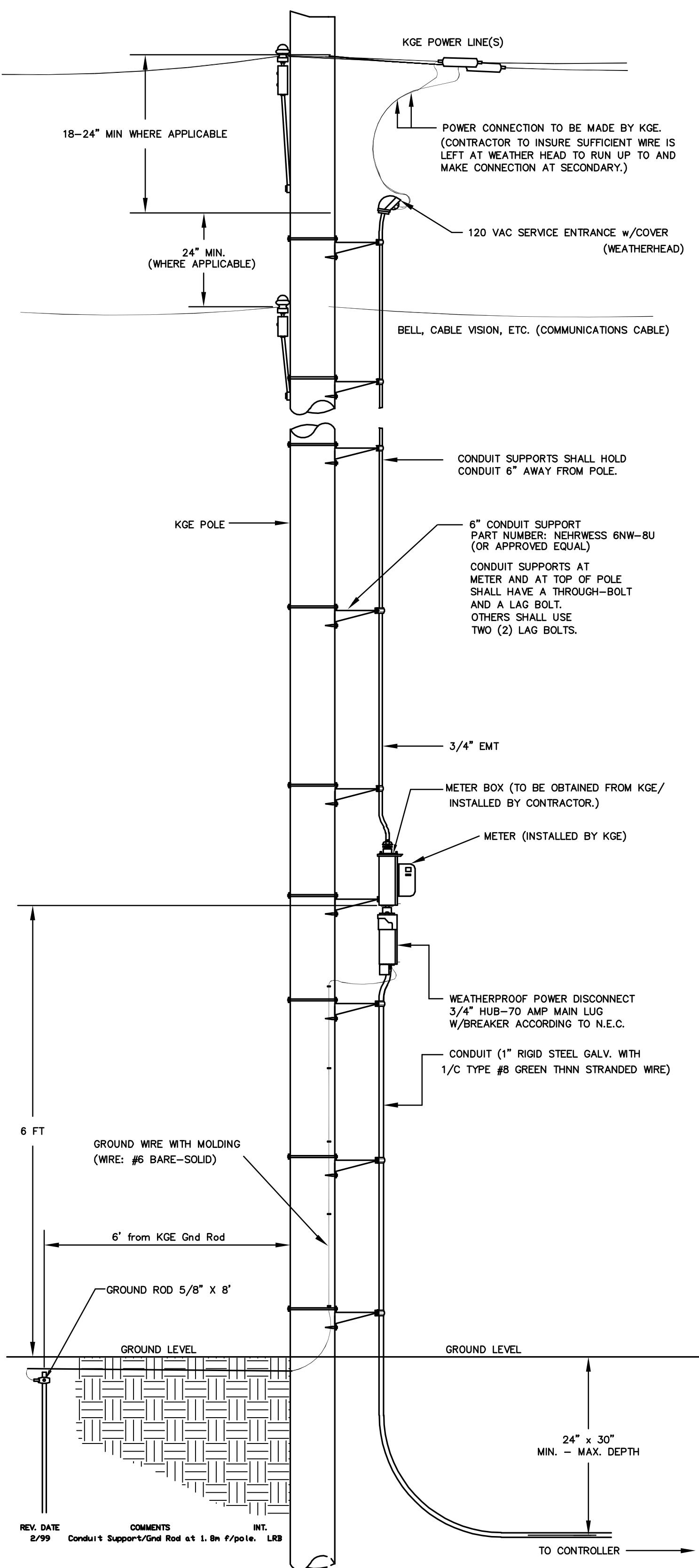


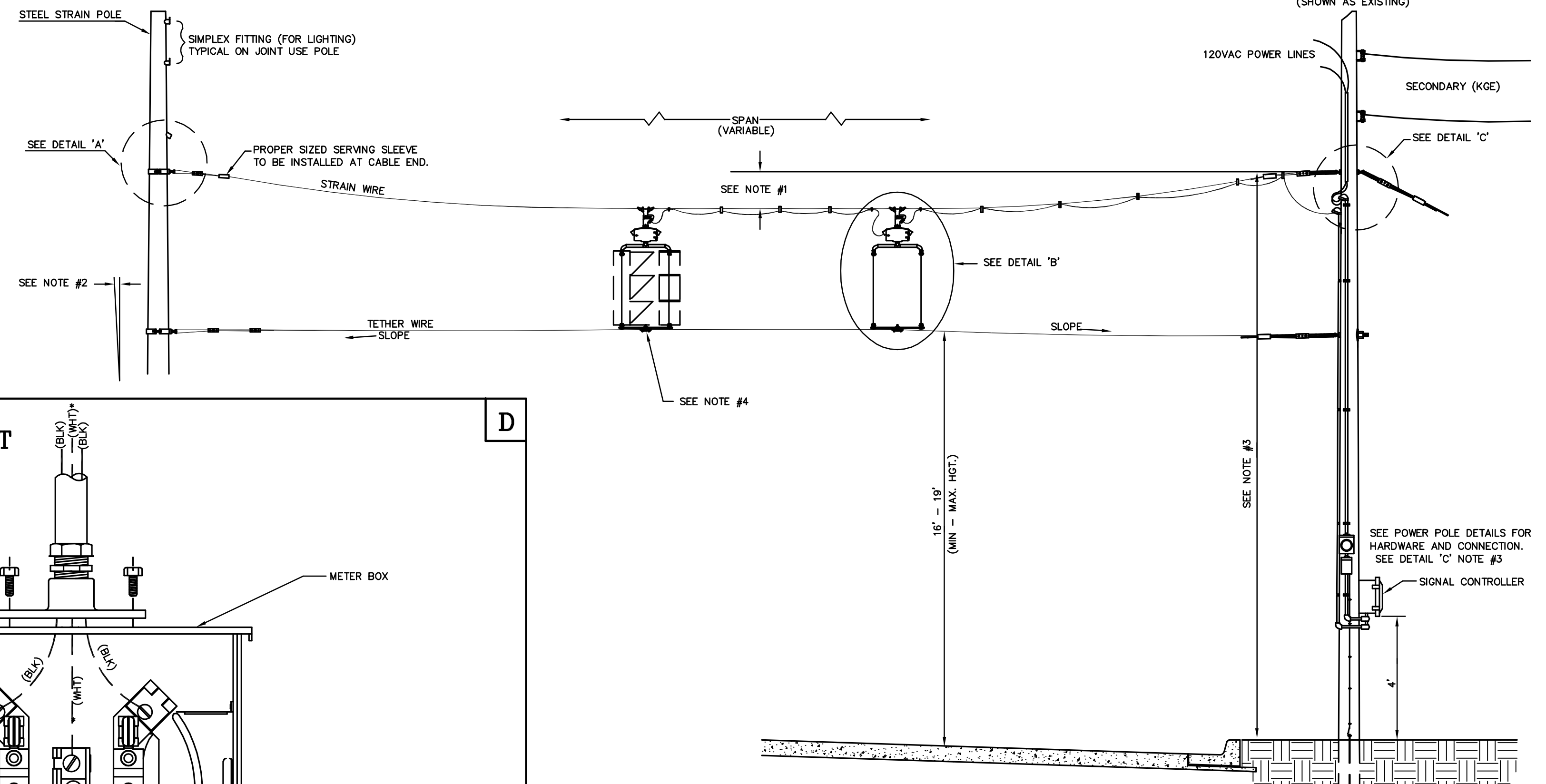
POWER POLE DETAILS



REV. DATE	COMMENTS	INT.
2/99	Conduit Support/Grd Rod at 1.0m r/pole. LRB	

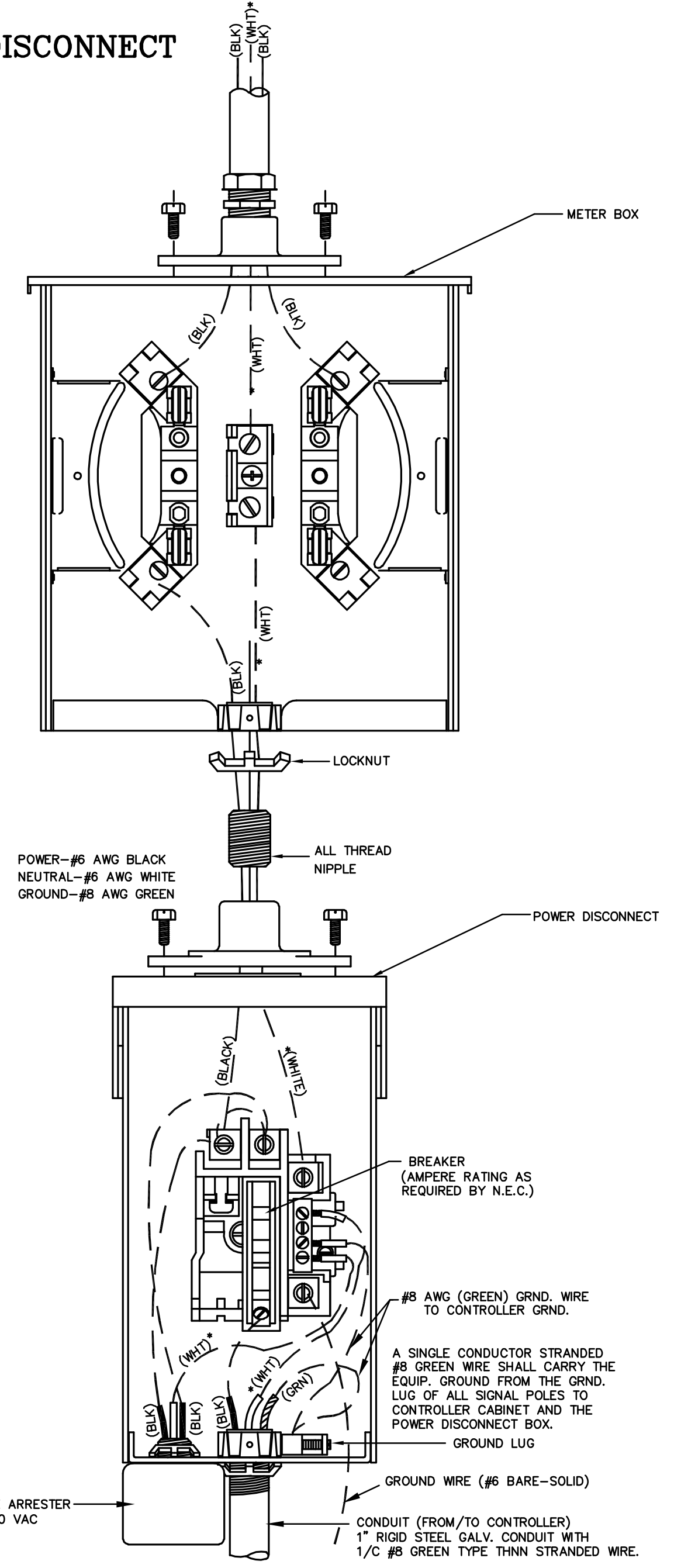
SPANWIRE ASSEMBLY DETAILS

- MAX. SAG = 5% OF SPAN.
- STANDARD BACKRAKE = 1.5'
- HEIGHT OF STRAIN WIRE HOOK-UP TO BE DETERMINED BY FIELD ENGINEER. TRAFFIC SIGNAL CABLE TO BE SECURED TO STRAIN (SPAN) WIRE WEATHERABLE NYLON CABLE HANGERS (12" CTR.) DETAIL 'B'
- TETHER CLAMP TO BE DESIGNED TO RELEASE UNDER 'HIGH WIND LOAD' TO PERMIT SIGNAL 'FREE SWING'.

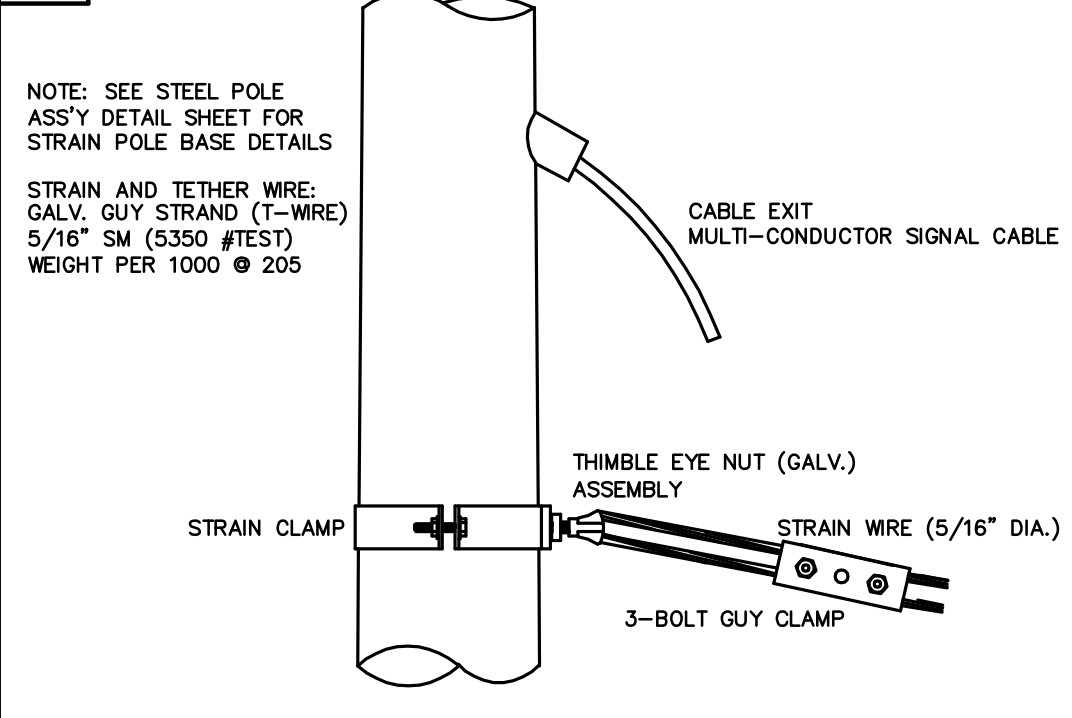


METER BOX & POWER DISCONNECT DETAILS

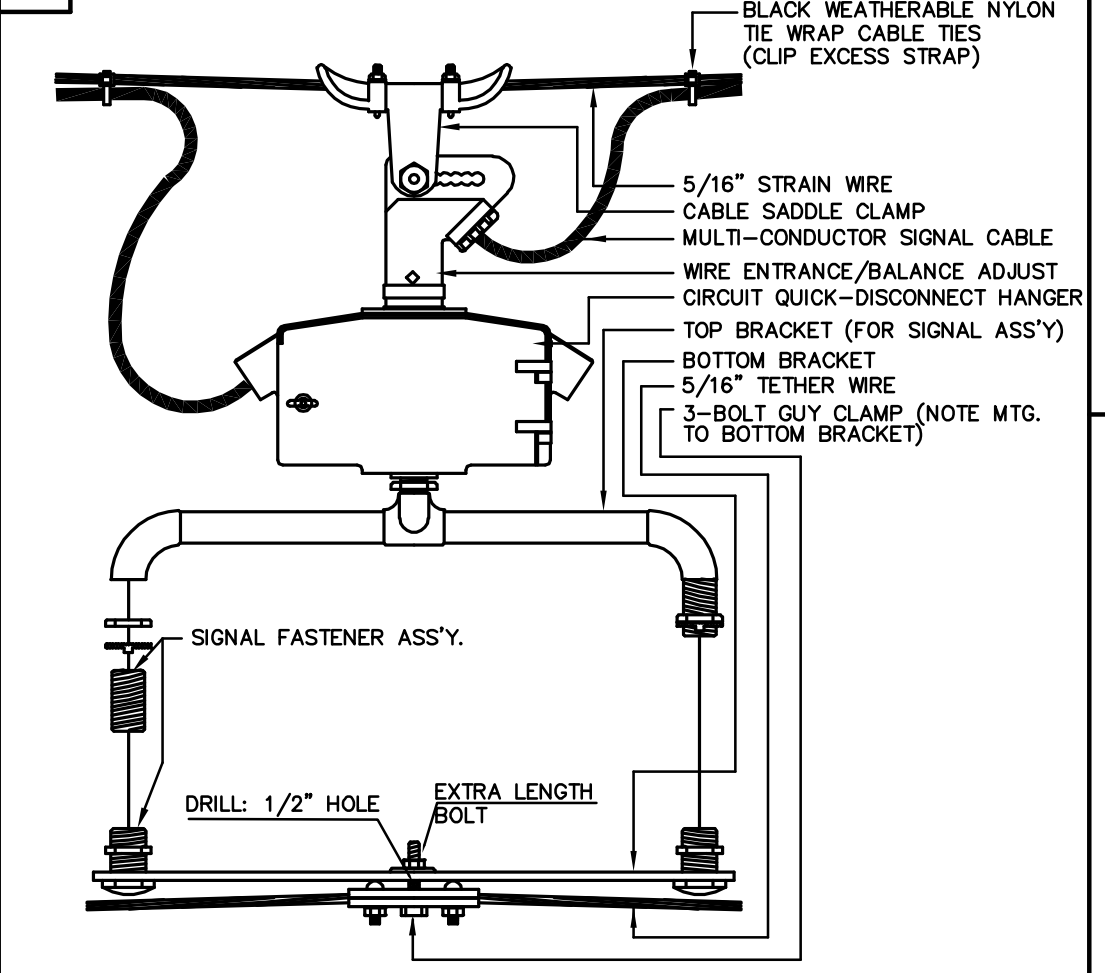
NOTE:
• TO BE MARKED WITH WHITE TAPE



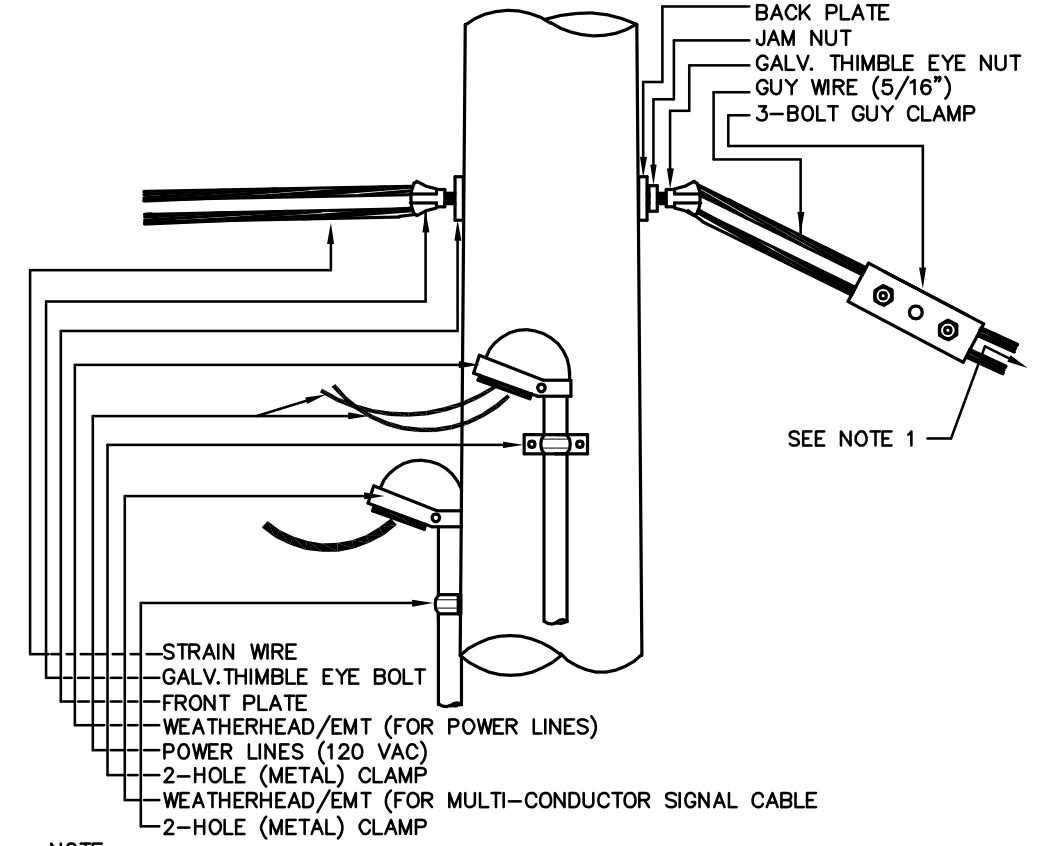
A STRAIN POLE ASSEMBLY



B SIGNAL BRACKET ASSEMBLY DETAILS



C WOOD POLE ASSEMBLY DETAILS KGE POLE EXCLUDED



- NOTE:
- GALV. THIMBLE EYE ANCHOR BOLT AND EXPANDING ANCHOR (NOT SHOWN) TO STABILIZE WOOD POLE (WHERE APPLICABLE)
 - ANY COMBINATION OF ROUND/THIMBLE EYE BOLTS AND NUTS MAY BE UTILIZED AS APPLICATION MAY VARY. FIELD ENGINEER TO DETERMINE TYPE OF HARDWARE USED.
 - HARDWARE SHOWN IS TRANSFERABLE TO STEEL POLE IN WHOLE OR PART WHERE STEEL STRAIN POLE IS USED. (POWER, SIGNAL CABLE, METER, ETC.) FIELD ENGINEER TO MAKE DETERMINATION. STEEL STRAIN POLE APPLICATIONS MAY VARY AS TO MOUNTING ON POLE. USE OF CLAMPS, BANDED BRACKETS, ETC. ARE STD. - FIELD ENGINEER TO DETERMINE BEST TYPE APPLICATIONS.

PLOT: 05/28/2009 10:47 AM

J:\Civil\04179.dwg Details\04179PPSP-DTL.dwg 11/03/2008 09:02:29 AM CST