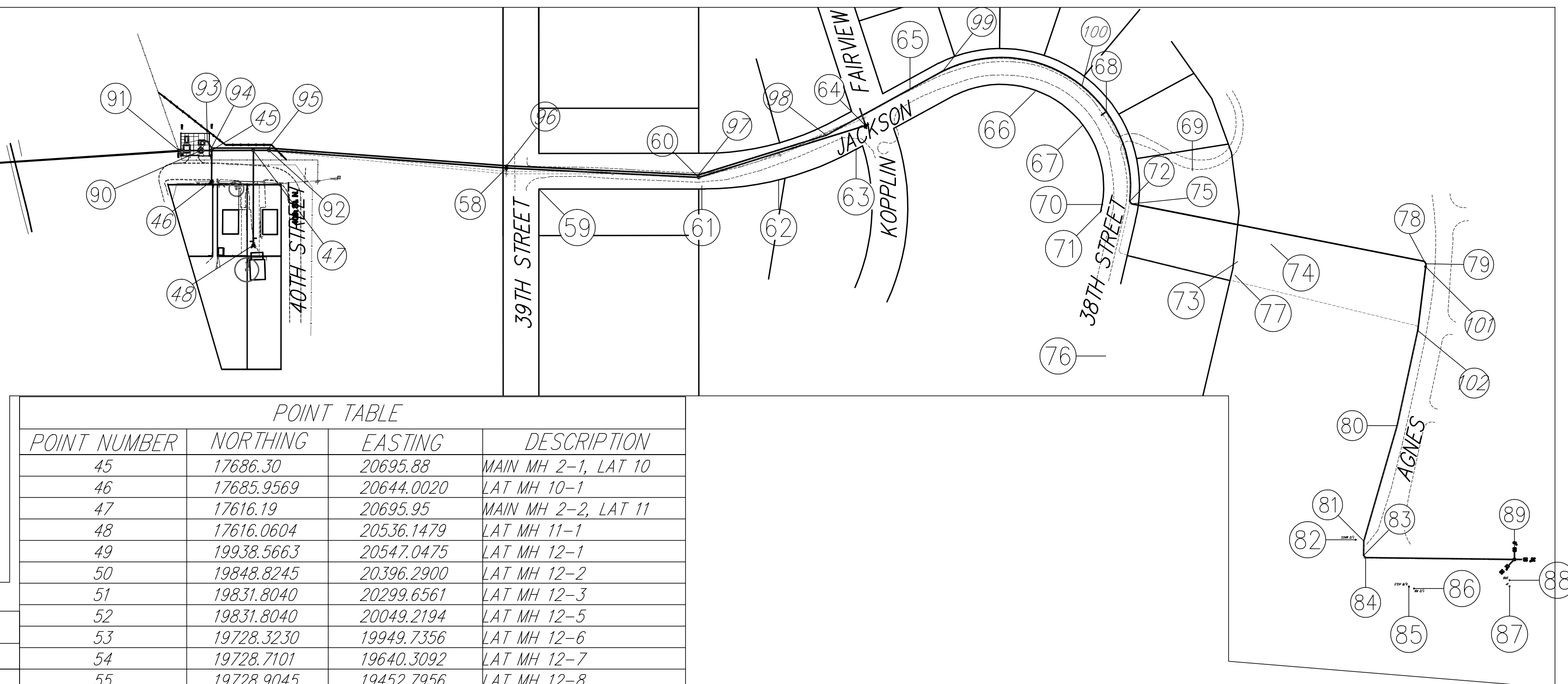


POINT NUMBER	NORTHING	EASTING	DESCRIPTION
1	20146.9432	20629.6167	1/2" IP
2	20076.8305	20663.8252	1/2" RB IP
3	19967.4507	20689.6393	3/4" IP
4	19907.6090	20629.5767	1/2" IP
5	19577.7849	20629.5933	3/4" IP
6	19517.8633	20629.5744	3/4" IP
7	19730.0177	20039.5681	1/2"
8	19577.7318	20689.5757	3/4" IP
9	19230.0554	20629.1375	1/2" IP
10	19229.7817	20689.5144	3/4"
11	19169.9353	20689.3861	3/4" IP
12	19230.9658	20039.2595	3/4" IP
13	18805.3396	20629.0264	3/4" IP
14	18745.0401	20689.0384	3/4" IP

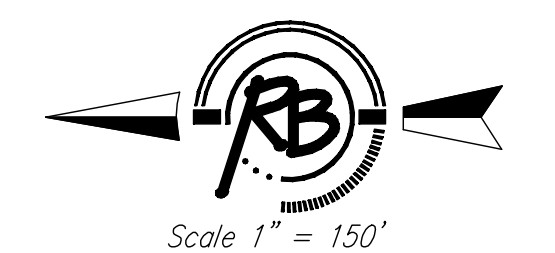
POINT NUMBER	NORTHING	EASTING	DESCRIPTION
15	18744.7177	20628.9396	1/2" IP
16	18250.1616	20329.1369	5/8" bar
17	18213.0599	20329.3010	5/8" bar
18	19938.5663	20659.3913	MAIN MH 1-7, LAT 1-0
19	19934.0584	21049.3772	LAT MH 1-1
20	19934.0584	21354.3772	LAT MH 1-2
21	19934.1020	21581.5513	LAT MH 1-3
22	19538.5663	20659.3913	MAIN MH 1-6, LAT 2&3
23	19598.6825	20435.0744	LAT MH 2-1
24	19598.6825	20127.4683	LAT MH 2-2
25	19543.5177	20904.4656	LAT MH 3-1
26	19543.0480	21257.9691	LAT MH 3-2
27	19542.6933	21524.9691	LAT MH 3-3
28	19190.0222	20659.3913	MAIN MH 1-5, LAT 4&5
29	19195.9941	20545.7018	LAT MH 4-1
30	19196.5171	20152.0460	LAT MH 4-2
31	19195.2704	20962.4301	LAT MH 5-1
32	19194.9741	21185.4276	LAT MH 5-2
33	19194.5888	21475.4275	LAT MH 5-3
34	18790.0222	20659.3913	MAIN MH 1-4, LAT 6&7
35	18786.0033	20529.9130	LAT MH 6-1
36	18786.0033	20133.4130	LAT MH 6-2
37	18776.0033	20889.4130	LAT MH 7-1
38	18776.0033	21310.1484	LAT MH 7-2
39	18408.7522	20650.7933	MAIN MH 1-2, LAT MH 8
40	18350.0684	20645.4416	LAT MH 8-1
41	18223.9731	20289.4130	LAT MH 8-2
42	18385.2033	20289.4123	LAT MH 8-3
43	19831.8040	20249.3724	LAT MH 12-4 & 9-0
44	19990.5309	20249.3966	LAT MH 9-0

POINT NUMBER	NORTHING	EASTING	DESCRIPTION
45	17686.30	20695.88	MAIN MH 2-1, LAT 10
46	17685.9569	20644.0020	LAT MH 10-1
47	17616.19	20695.95	MAIN MH 2-2, LAT 11
48	17616.0604	20536.1479	LAT MH 11-1
49	19938.5663	20547.0475	LAT MH 12-1
50	19848.8245	20396.2900	LAT MH 12-2
51	19831.8040	20299.6561	LAT MH 12-3
52	19831.8040	20049.2194	LAT MH 12-5
53	19728.3230	19949.7356	LAT MH 12-6
54	19728.7101	19640.3092	LAT MH 12-7
55	19728.9045	19452.7956	LAT MH 12-8
56	20124.57	20659.3913	MAIN MH 1-8
57	18593.9540	20659.3913	MAIN MH 1-3
58	17190.9853	20666.3625	MAIN MH 2-4, 5+14.30
59	17136.7140	20630.9728	1/2" IP PINCHED
60	16868.3236	20650.6707	MAIN MH 2-5, 8+37.34
61	16862.7967	20636.8216	1/2" RB IP
62	16733.8051	20647.0461	1/2" IP
63	16603.9964	20698.4587	1/2" IP
64	16587.9930	20737.7282	MAIN MH 2-6, 11+30.86
65	16513.2487	20801.1295	1/2" IP
66	16303.2326	20795.1436	1/2" RB IP
67	16222.8392	20739.1817	3/4" IP
68	16183.6826	20761.1717	MAIN LN 3 STA 15+88.57
69	16039.3154	20661.6488	1/2" RB IP
70	16189.4715	20605.2376	1/2" IP
71	16191.2739	20595.3869	3/4" IP
72	16144.4211	20610.5575	MAIN LN 3, STA 17+47.74
73	15962.9891	20509.3267	3/4" IP
74	15907.2746	20538.7859	1/2" REBAR
75	16141.6368	20606.4064	MAIN LN 3, STA 17+52.74
76	16184.6369	20350.7796	1/2" IP
77	15968.0626	20486.5061	3/4" IP
78	15650.0235	20509.5236	MAIN LN 3, STA 22+53.81
79	15647.0783	20505.4778	MAIN LN 3, STA 22+58.81
80	15695.6710	20233.9412	MAIN LN 3, STA 25+21.94
81	15751.5507	20039.9650	MAIN LN 3, STA 27+23.80
82	15765.2889	20042.1339	1/2" MKEC
83	15751.8436	20015.7404	MAIN LN 3, STA 27+48.03
84	15748.3511	20012.1624	MAIN LN 3, STA 27+53.03

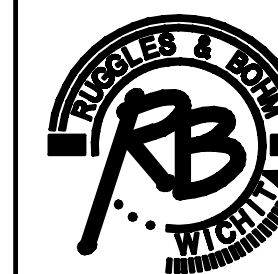
POINT NUMBER	NORTHING	EASTING	DESCRIPTION
85	15675.8009	19963.3087	5/8" ACLS
86	15667.1319	19960.1668	1/2" RB IP
87	15506.8682	19963.9751	1/2" IP
88	15506.7681	19974.0367	SRB IP
89	15498.5345	20009.1423	MAIN LN 3, STA 30+02.86
90	17704.19	20695.84	MAIN LN 1, STA 9+65.36 WET WELL
91	17740.58	20695.84	MAIN MH 1-1, STA 10+1.75
92	17589.89	20695.97	MAIN LINE 2, STA 1+14.30
93	17693.39	20711.10	MAIN LINE 3, STA 0+0.00
94	17686.29	20699.89	MAIN LINE 3, STA 0+13.27
95	17589.91	20699.99	MAIN LINE 3, STA 1+09.65
96	17190.74	20670.36	MAIN LINE 3, STA 5+09.92
97	16868.84	20654.70	MAIN LINE 3, STA 8+32.21
98	16653.75	20721.49	MAIN LINE 3, STA 10+57.42
99	16458.44	20829.16	MAIN LINE 3, STA 12+80.45 PC
100	16224.66	20804.47	MAIN LINE 3, MID POINT OF ARC
101	16149.61	20581.69	MAIN LINE 3, STA 22+63.66
102	15660.9432	20393.5090	MAIN LINE 3, STA 23+76.48



REVISED: 6/12/08
REVISED: 1/09/08



**MAIN 16, SS #23
BUBBLE MAP**



Ruggles & Bohm, P.A.
Engineering, Surveying, Land Planning

824 North Main
Wichita, Kansas 67203
www.rbkansas.com

(316) 264-8008
(316) 264-4621 fax
E-mail: info@rbkansas.com

ISSUING FILE: Bubble Map
PROJECT NUMBER: 468-83958
DATE: 12/26/07

DESIGN	PDC	SHEET 24 OF 24
DRAWN	2686X	
REVIEW		
UTILITY		