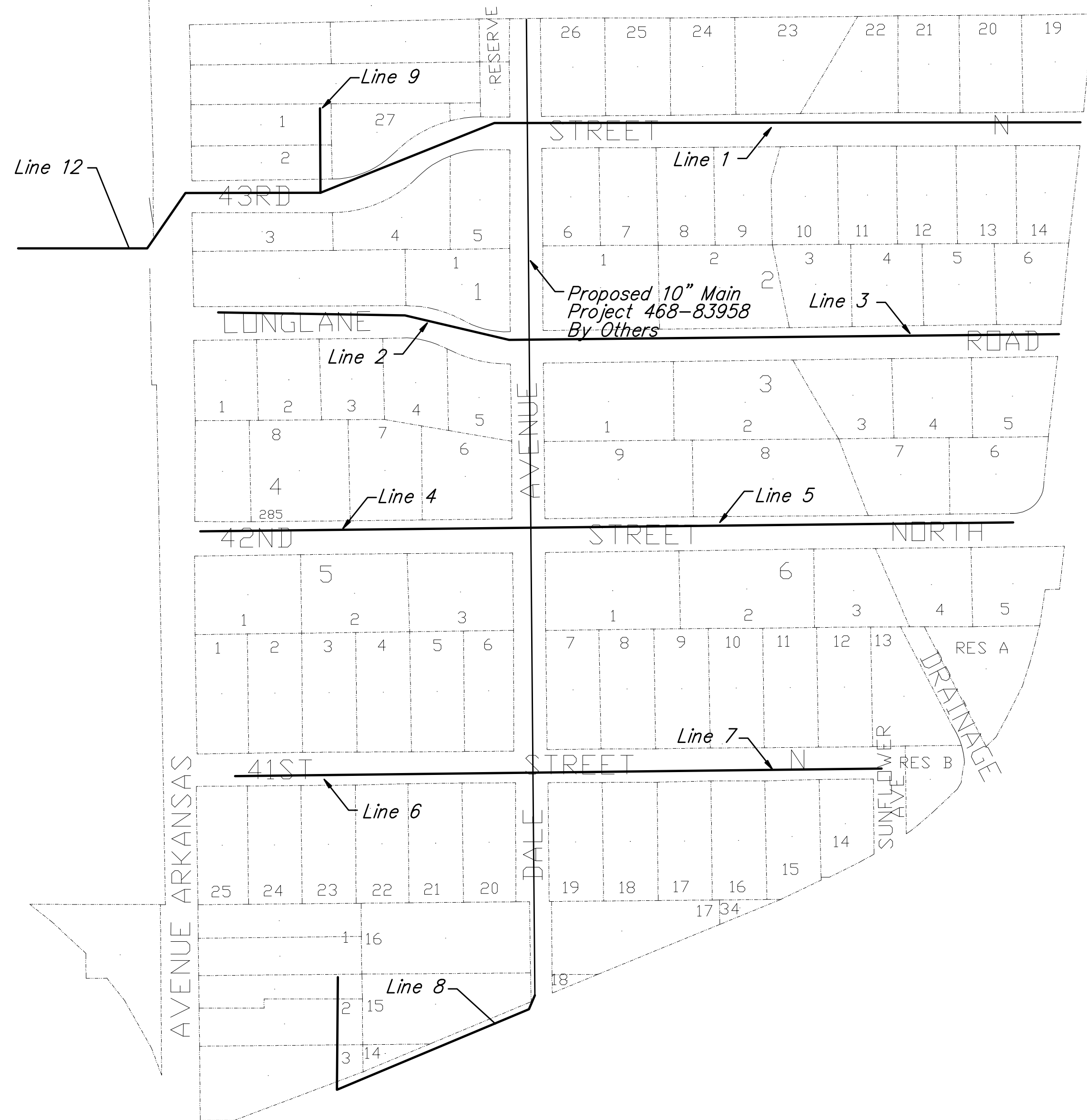




Scale: None

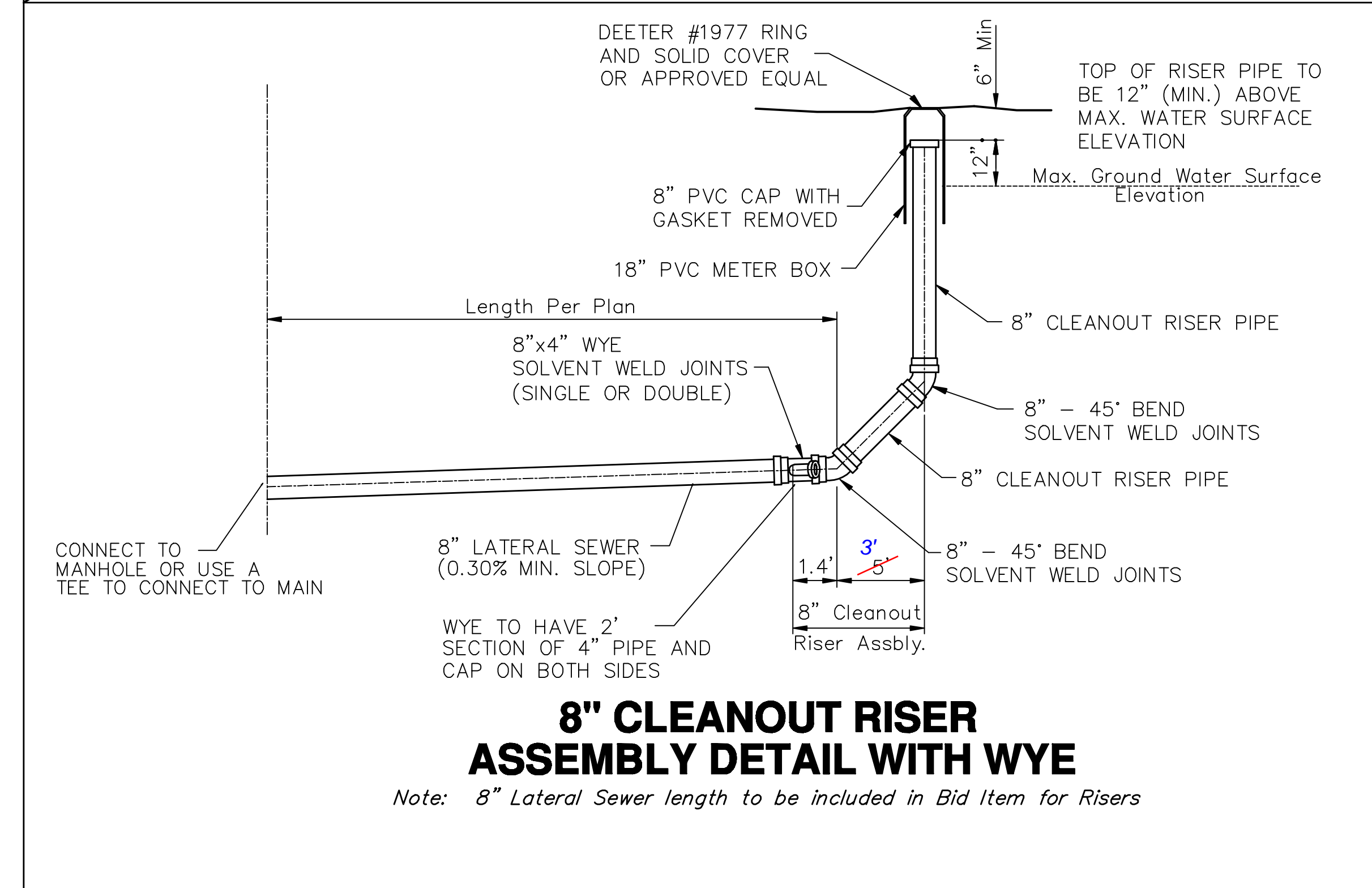
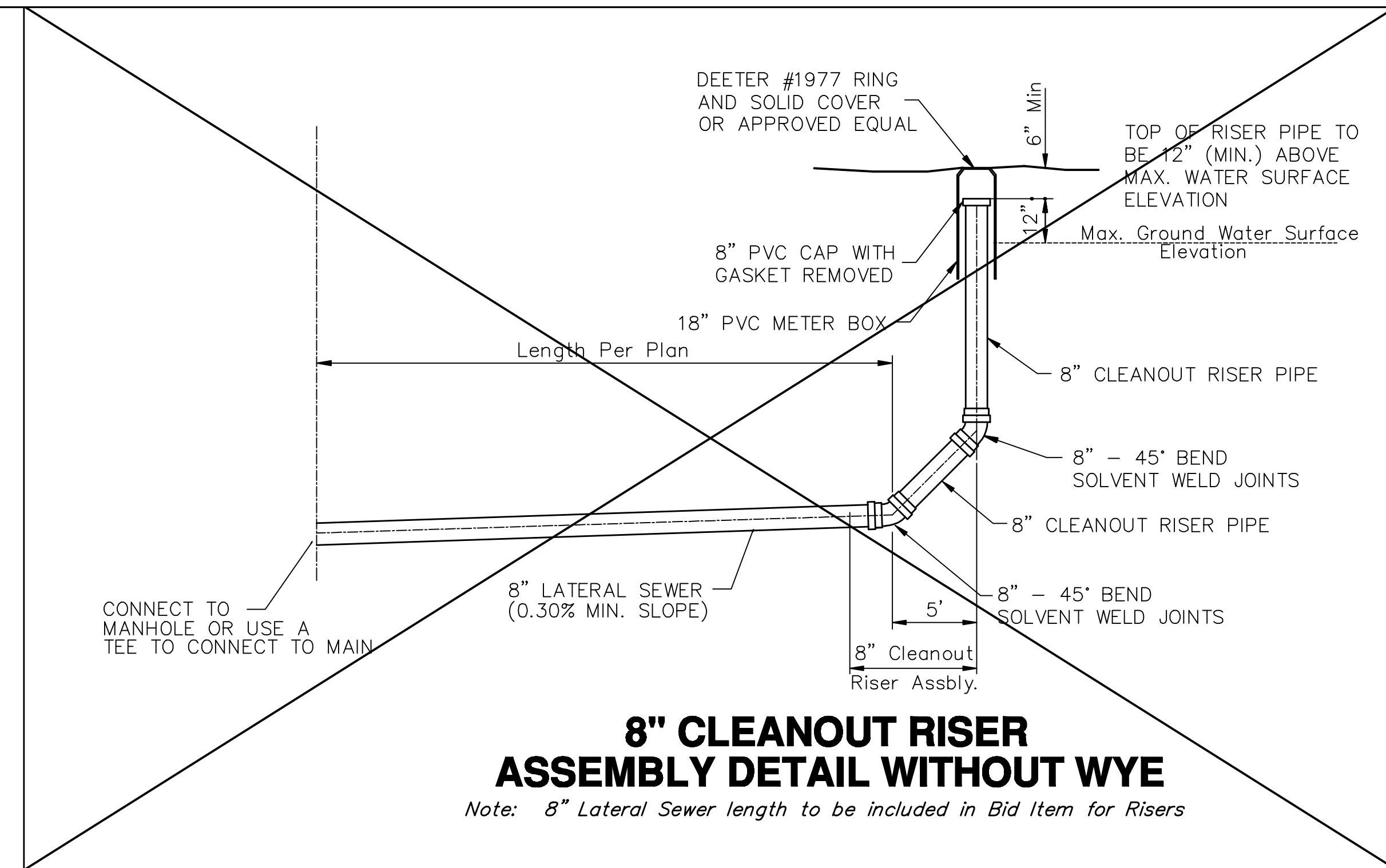
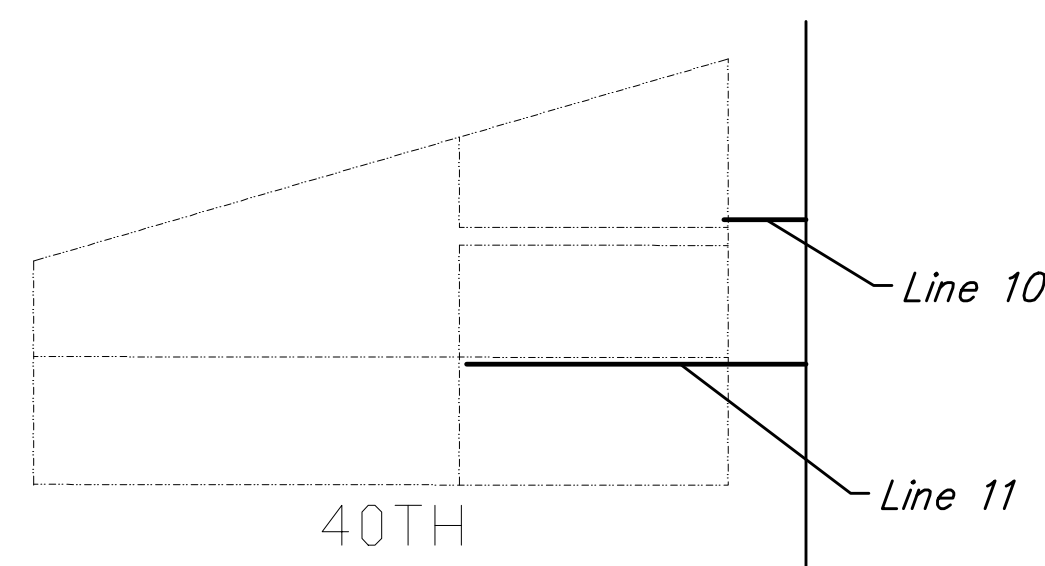


HORIZONTAL CONTROL

MANHOLE NUMBER	STATION	NORTHING	EASTING
MH 1 - 0	STA 10+00.00	N 19,938.56	E 20,659.39
MH 1 - 1	STA 13+90.00	N 19,934.06	E 21,049.38
MH 1 - 2	STA 16+95.00	N 19,934.06	E 21,354.38
MH 1 - 3	STA 19+22.17	N 19,934.06	E 21,581.55
MH 2 - 0	STA 10+00.00	N 19,538.19	E 20,659.39
MH 2 - 1	STA 12+32.42	N 19,598.68	E 20,435.07
MH 2 - 2	STA 15+10.03	N 19,598.68	E 20,127.46
MH 3 - 0	STA 10+00.00	N 19,538.19	E 20,659.39
MH 3 - 1	STA 12+44.96	N 19,543.52	E 20,904.47
MH 3 - 2	STA 15+98.46	N 19,543.05	E 21,257.97
MH 3 - 3	STA 18+65.46	N 19,542.69	E 21,524.97
MH 4 - 0	STA 10+00.00	N 19,190.02	E 20,659.39
MH 4 - 1	STA 11+14.00	N 19,195.99	E 20,545.70
MH 4 - 2	STA 15+07.66	N 19,196.53	E 20,152.05
MH 5 - 0	STA 10+00.00	N 19,190.02	E 20,659.39
MH 5 - 1	STA 13+02.91	N 19,195.27	E 20,962.43
MH 5 - 2	STA 15+25.91	N 19,194.97	E 21,185.43
MH 5 - 3	STA 18+15.91	N 19,194.59	E 21,475.43
MH 6 - 0	STA 10+00.00	N 18,790.02	E 20,659.39
MH 6 - 1	STA 11+29.72	N 18,786.00	E 20,529.91
MH 6 - 2	STA 15+26.22	N 18,786.00	E 20,133.41
MH 7 - 0	STA 10+00.00	N 18,790.02	E 20,659.39
MH 7 - 1	STA 12+51.00	N 18,776.00	E 20,889.41
MH 7 - 2	STA 16+51.00	N 18,776.00	E 21,310.15
MH 8 - 0	STA 10+00.00	N 18,408.75	E 20,650.79
MH 8 - 1	STA 10+59.22	N 18,350.07	E 20,645.44
MH 8 - 2	STA 14+36.92	N 18,223.97	E 20,289.41
MH 8 - 3	STA 15+98.15	N 18,385.20	E 20,289.41
MH 9 - 0	STA 10+00.00	N 19,938.56	E 20,659.39
MH 9 - 1	STA 11+58.73	N 19,990.53	E 20,249.40
MH 10 - 0	STA 10+00.00	N 17,685.96	E 20,694.73
MH 10 - 1	STA 10+50.77	N 17,685.96	E 20,644.00
MH 11 - 0	STA 10+00.00	N 17,615.85	E 20,694.79
MH 11 - 1	STA 11+58.60	N 17,616.06	E 20,536.15
MH 12 - 0	STA 0+00.00	N 19,938.57	E 20,659.39
MH 12 - 1	STA 1+12.34	N 19,938.57	E 20,547.05
MH 12 - 2	STA 2+87.79	N 19,848.82	E 20,396.29
MH 12 - 3	STA 3+85.91	N 19,831.80	E 20,299.66
MH 12 - 4	STA 4+36.19	N 19,831.80	E 20,249.37
MH 12 - 5	STA 6+36.35	N 19,831.80	E 20,049.22
MH 12 - 6	STA 7+79.90	N 19,728.32	E 19,949.73
MH 12 - 7	STA 10+89.33	N 19,728.71	E 19,640.31
MH 12 - 8	STA 12+76.84	N 19,728.90	E 19,452.79

HORIZONTAL CONTROL

Point	Description	Northing	Easting
①	SM 1/2" ip. 1/4 Corner	N 20,000.00	E 20,000.00
②	SM 3/4 ip Northeast Sec. Cor.	N 20,000.01	E 22,658.71
③	SM 1/2" rb	N 19,282.16	E 21,869.25



LATERALS 1, 2 & 3, MAIN 16, SS #23
KEY MAP

Ruggles & Bohn, P.A.
 Engineering, Surveying, Land Planning

2897X
 2
 25
 3/22/06