

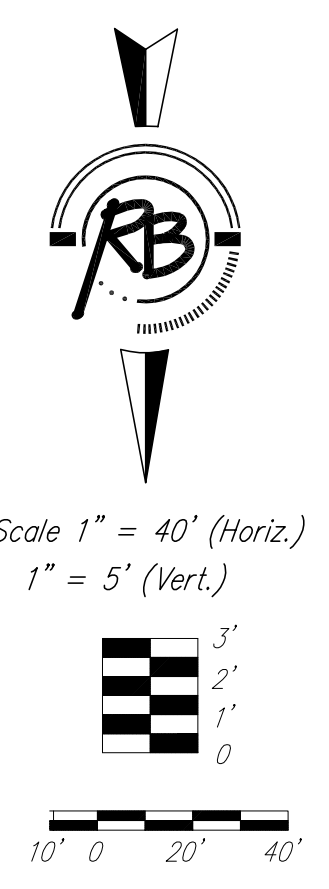
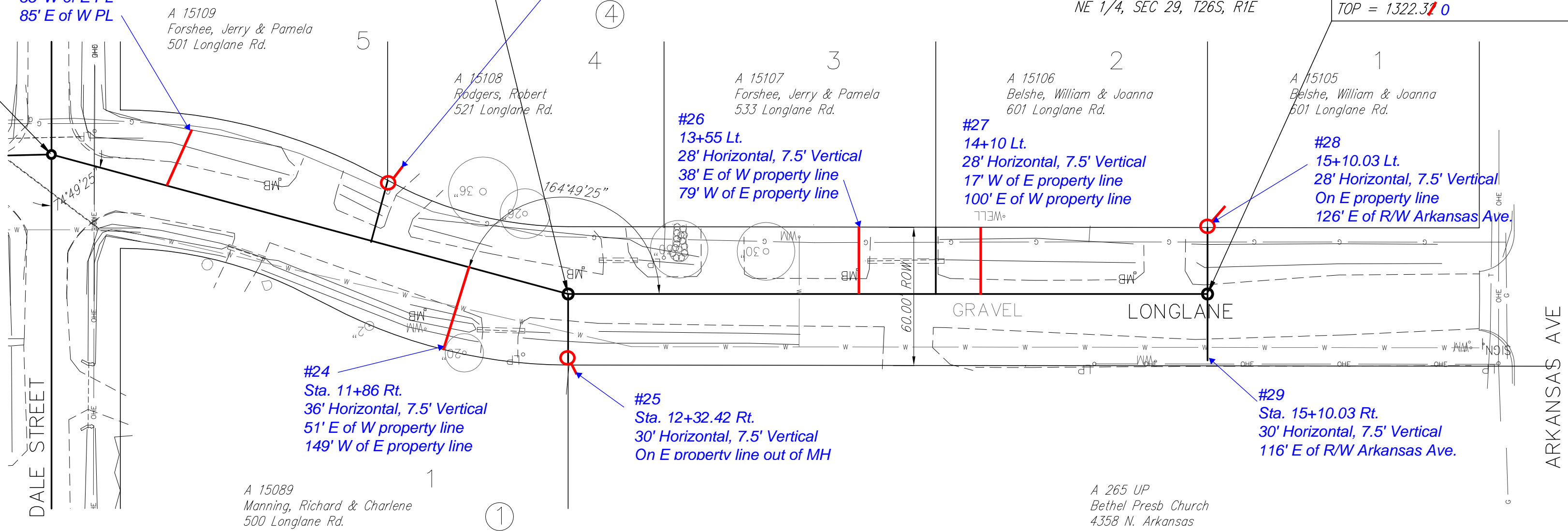
MH 2-0
 STA. 10+00 LINE 2=
 MH 1-6 LINE 1, MAIN 16
 PROJECT NO. 468-83958
 CONNECT TO STUB

#22
 10+58 Lt.
 32' Horizontal, 7.5' Vertical
 35' W of E PL
 85' E of W PL

MH 2-1
 STA. 12+32.42 LINE 2
 CONSTRUCT STD TYPE P MH
 TOP = 1321.83 97

#23
 11+42 Lt.
 32' Horizontal, 7.5' Vertical
 On E property line

MH 2-2
 STA. 15+10.03 LINE 2
 CONSTRUCT STD TYPE P MH
 TOP = 1322.37 0



NOTE: Horizontal distances are from main to cleanout
 Vertical distances are from existing ground to wye
 Cleanout to wye - 4"
 All are single wyes unless specifically noted.

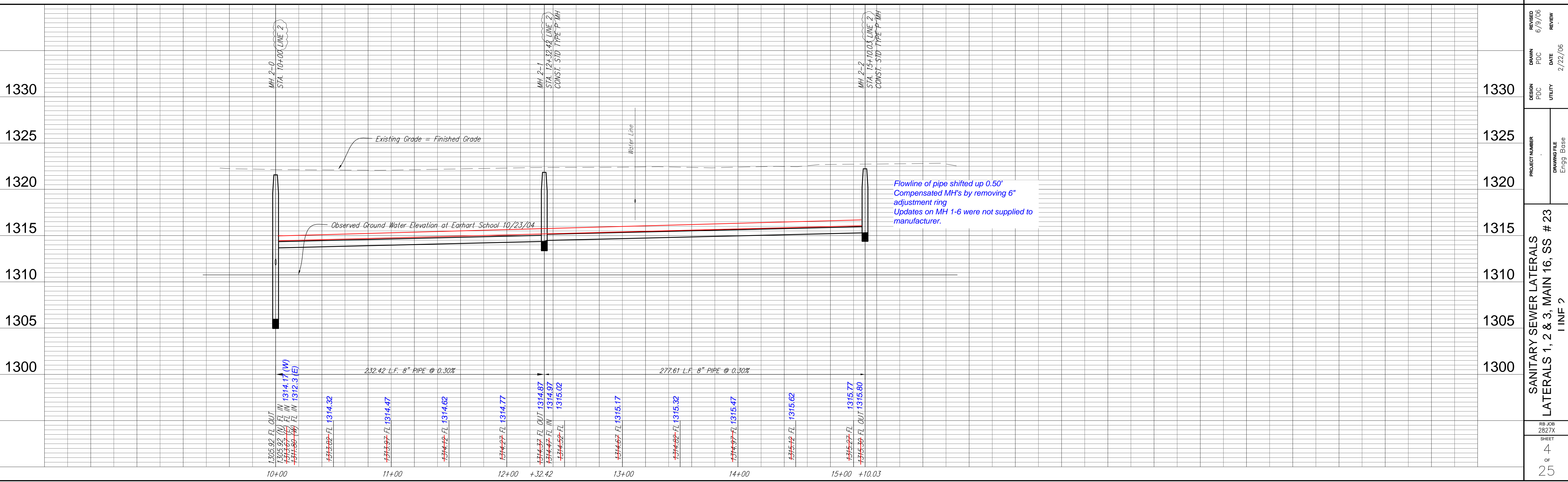
The Contractor shall field verify the existing manhole stub elevations prior to the start of construction.

The Contractor shall contact each property owner to verify the location of the riser with the property owner.

NUMBER	TYPE	LOCATION			DESIGN	AS BUILT	FOR INFORMATION ONLY		
		LOT NO.	BLOCK NO.	ADDITION NAME			STATION	DIRECTION	APPROXIMATE LENGTH OF PIPE
1	Double Riser	4, 5	4	Ark Valley	2	11+44/Rt.		8'	22'
2	Double Riser	4, UP	1	Ark Valley	2	12+33/Rt.		8'	24'
3	Double Riser	2, 3	4	Ark Valley	2	13+92/Lt.		8'	22'
4	Single Riser	1, 2	1	Ark Valley	2	15+10/Lt.		8'	22'
5	Single Riser	A265UP	4	Ark Valley	2	13+10/Rt.		8'	22'

REVISED: 12/31/07
 REVISED: 12/20/07

Russell & Bohm P.A.
 Engineering, Surveying, Land Planning
 600 N. Main St., Suite 100
 Wichita, Kansas 67203
 (316) 264-4600
 www.russellandbohm.com



Flowline of pipe shifted up 0.50'
 Compensated MH's by removing 6" adjustment ring
 Updates on MH 1-6 were not supplied to manufacturer.

REVISION	6/9/06	REVIEW
DRAWN	PDC	DATE
DESIGN	PDC	UTILITY
PROJECT NUMBER	1330	DRAWING FILE
SANITARY SEWER LATERALS		
LATERALS 1, 2 & 3, MAIN 16, SS # 23		
1 INF 2		
RB JOB	2827X	
SHEET	4	OF
		25