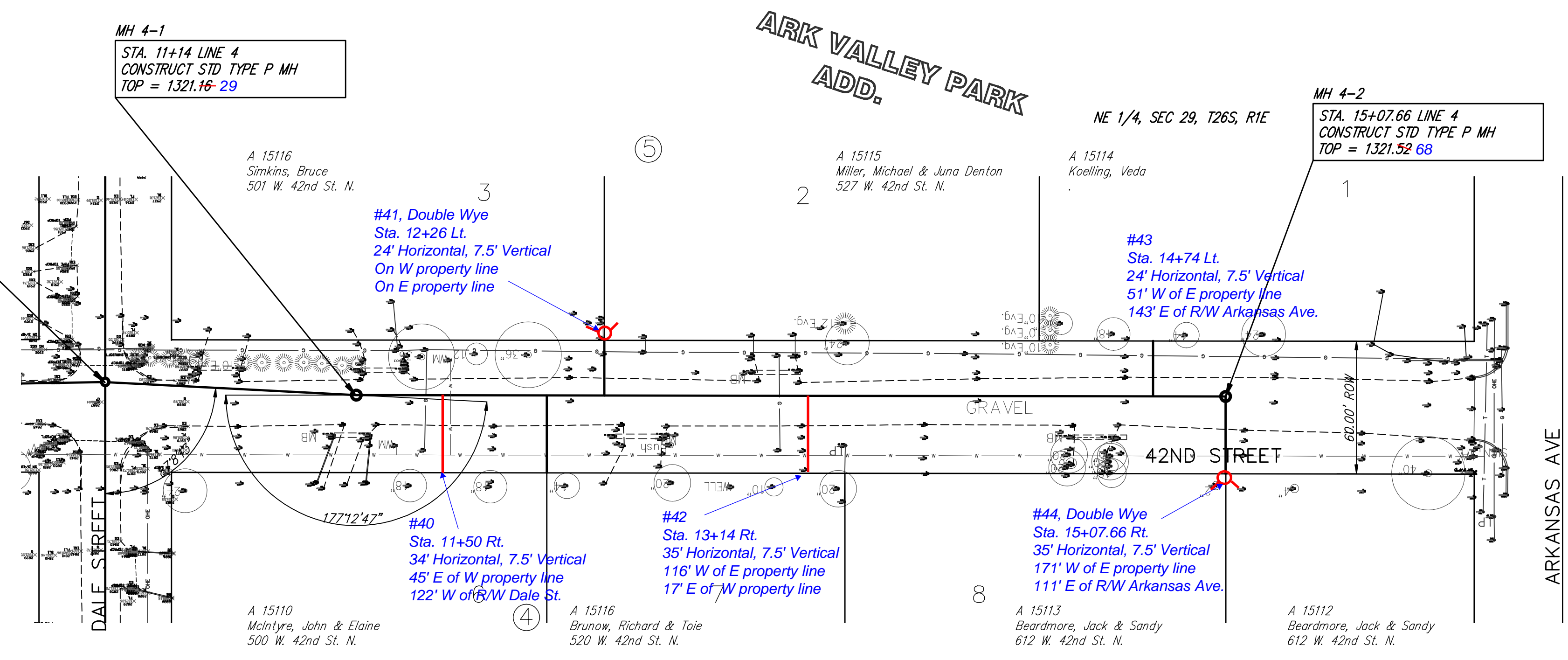


MH 4-0
 STA. 10+00 LINE 4 =
 MH 1-5 LINE 1, MAIN 16
 PROJECT NO. 468-83958
 CONNECT TO STUB

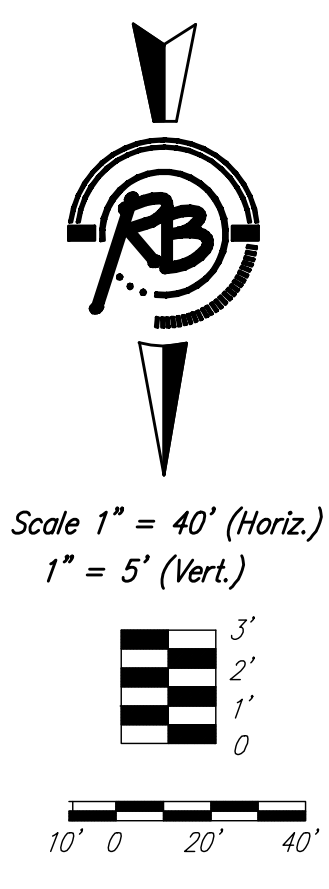
MH 4-1
 STA. 11+14 LINE 4
 CONSTRUCT STD TYPE P MH
 TOP = 1321.16-29

MH 4-2
 STA. 15+07.66 LINE 4
 CONSTRUCT STD TYPE P MH
 TOP = 1321.52 68



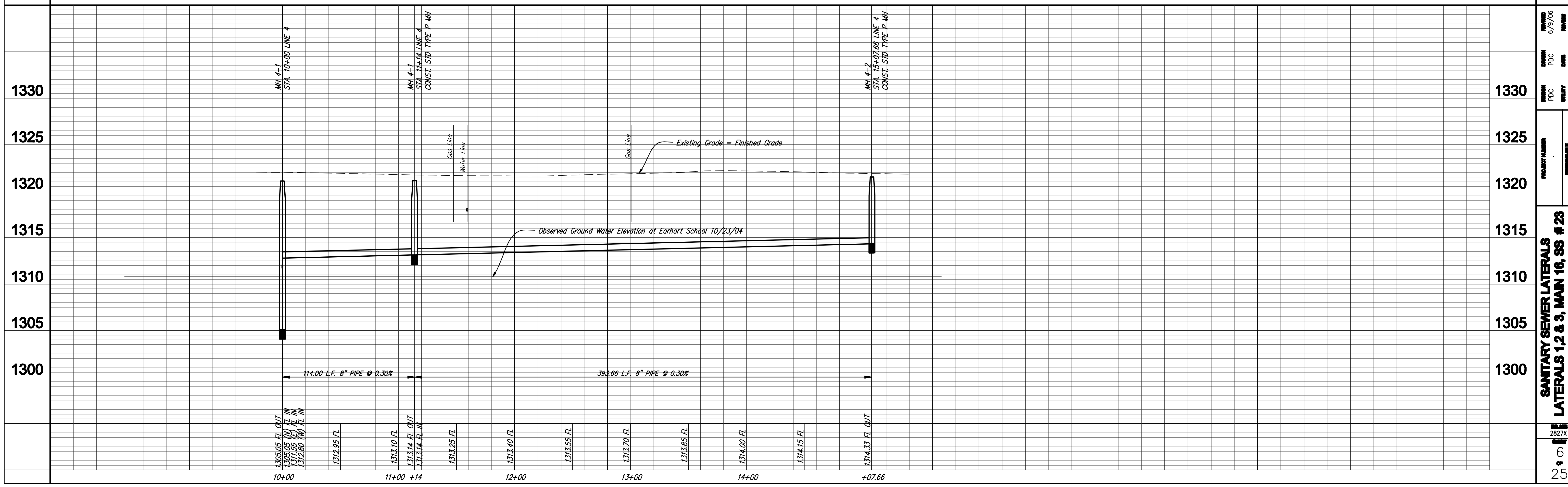
NUMBER	TYPE	LOCATION			LINE NO.	DESIGN STATION \ DIRECTION	AS BUILT STATION \ DIRECTION	FOR INFORMATION ONLY	
		LOT NO.	BLOCK NO.	ADDITION NAME				APPROXIMATE LENGTH OF PIPE	VERTICAL
1	Double Riser	6, 7	4	Ark Valley	4	12+00/Lt.		9'	30'
2	Double Riser	3, 2	5	Ark Valley	4	12+26/Lt.		8'	20'
3	Single Riser	1	5	Ark Valley	4	14+74/Rt.		8'	20'
4	Double Riser	8, UP	4	Ark Valley	4	15+08/Rt.		8'	30'

NOTE: Horizontal distances are from main to cleanout
 Vertical distances are from existing ground to wye
 Cleanout to wye - 4'
 All are single wye unless specifically noted

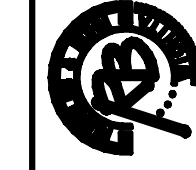


The Contractor shall field verify the existing manhole stub elevations prior to the start of construction.
 The Contractor shall contact each property owner to verify the location of the riser with the property owner.

REVISED: 6/27/07



Ruggles & Doherty, P.A.
 Engineering, Surveying, Land Mapping
 1000 West 10th Street
 Oklahoma City, Oklahoma 73106
 Phone: (405) 521-1100
 Fax: (405) 521-1101
 www.rugglesanddoherty.com



DATE: 6/9/06
 PDC: PDC
 DATE: 2/22/06
 UTILITY: UTILITY

PROJECT NUMBER: 468-83958
 DRAWING NO.: 2827X
 Engr. Base

SANITARY SEWER LATERALS
 LATERALS 1, 2 & 3, MAIN 16, SS # 23
 LINE 4

2827X
 6
 25