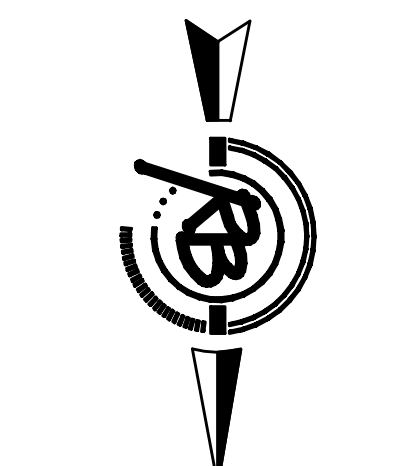


REVISED: 6/27/07



Scale 1" = 20' (Horiz.)  
1" = 5' (Vert.)

NE 1/4, SEC. 29, T26S, R1E

525 W. 43rd St. N.

J.B. MULLER

ADDITION

43rd St. N.

501 W. 43rd St. N.

MH 12-3  
STA. 3+85.91 LINE 12  
N 19831.80  
E 20299.66  
CONSTRUCT STD TYPE P MH  
TOP = 1322.9267  
FL-RISER (S) = 1311.92  
Plug

MH 12-2  
STA. 2+87.79 LINE 12  
N 19848.82  
E 20396.29  
CONSTRUCT STD TYPE P MH  
TOP = 1322.9222

MH 12-1  
STA. 1+12.34 LINE 12  
N 19938.56  
E 20547.05  
CONSTRUCT STD TYPE P MH  
TOP = 1322.1104

MH 12-0  
STA. 32+01.34 MAIN  
STA. 0+00.00 LINE 12  
N 19938.56  
E 20659.39  
CONNECT TO EXISTING 8" STUB  
TOP = 1322.25

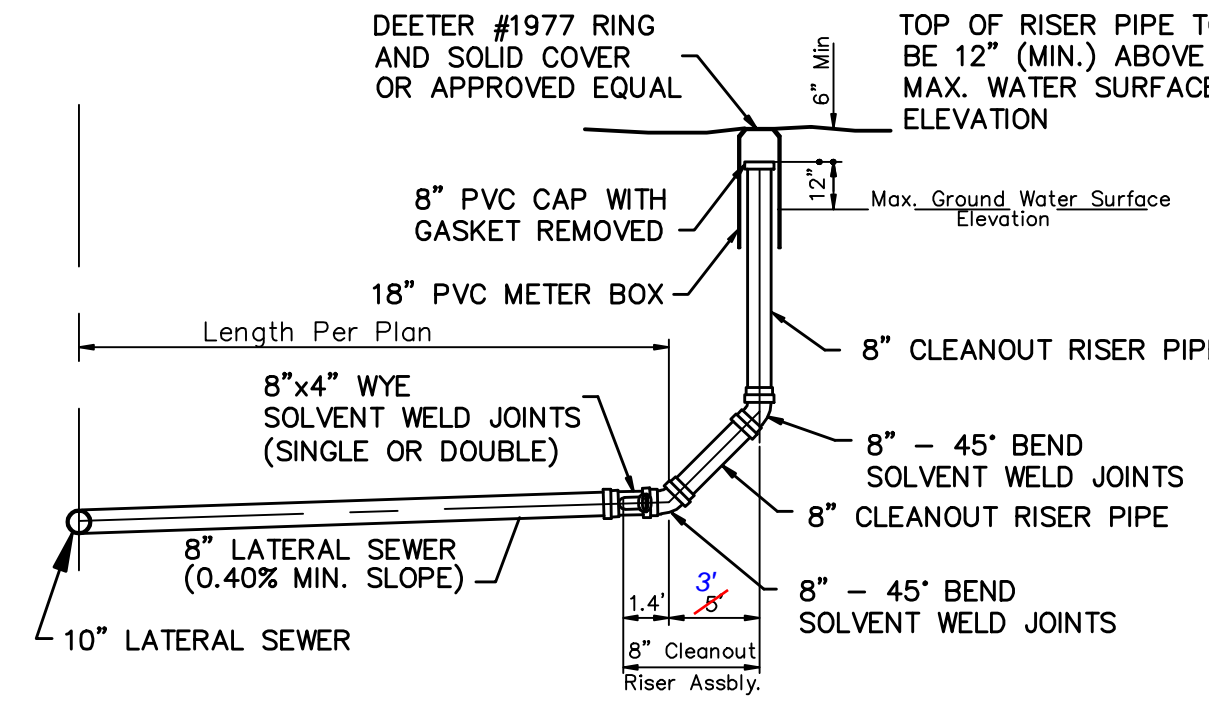
#1  
Sta. 0+47.5 Lt.  
8" single wye cleanout with 4" stub, no riser  
20' Horizontal 10' Vertical  
4' N of fence  
18' W of E/R/W Dale Ave.

#2  
Sta. 1+66.34 Lt., no riser  
8" single wye cleanout with 4" stub  
22' Horizontal, 10' Vertical  
10' W of E property line

#3  
Sta. 1+91.42 Rt., no riser  
8" single wye cleanout with 4" stub  
39.5' Horizontal, 10' Vertical  
65' W of E property line

CONSTRUCT SINGLE WYE CLEANOUT WITH RISERS AS PER THE SEWER SERVICE TABLE.

CONSTRUCT SINGLE WYE CLEANOUT WITH RISERS AS PER THE SEWER SERVICE TABLE.



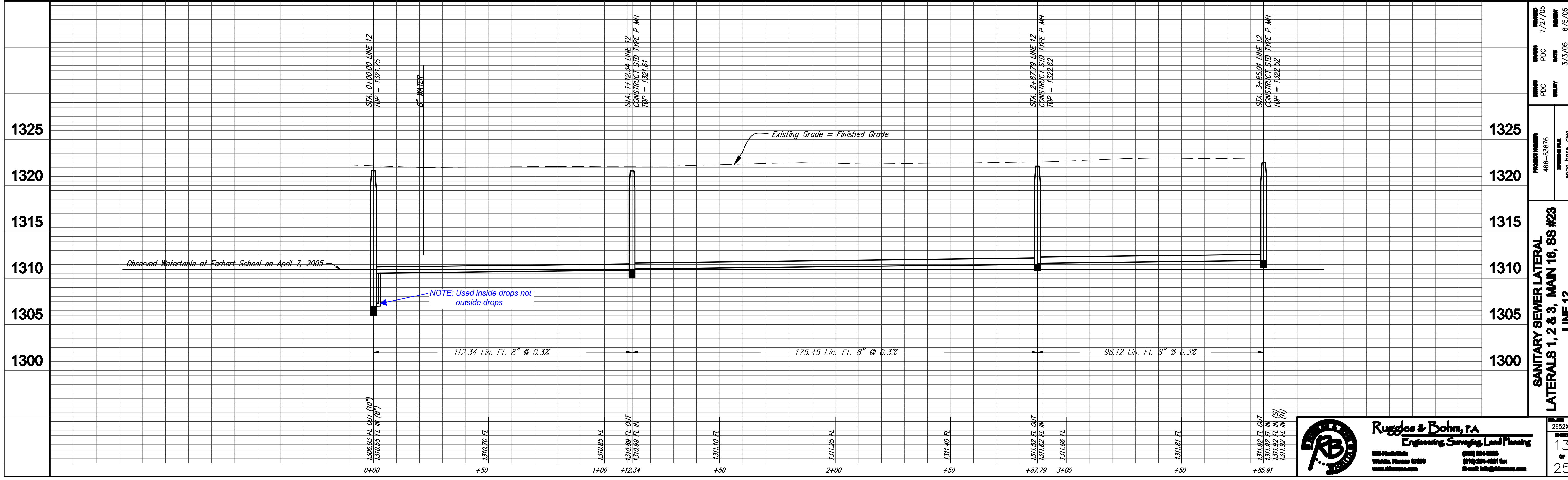
DOUBLE WYE CLEANOUT W/RISERS ASSEMBLY DETAIL

Note: 8" Lateral Sewer length to be included in Bid Item for Risers

SEWER SERVICE TABLE

NUMBER	TYPE	LOCATION			FOR INFORMATION ONLY		
		LOT NO.	BLOCK NO.	LINE NO.	STATION DIRECTION	APPROXIMATE LENGTH 4" PIPE VERTICAL	HORIZONTAL
1	Single Riser	5	A	12	1+17/Lt.	11.0'	26'
2	Double Wye Cleanout w/risers	3, 4	A	12	3+88/Lt.	14' of 8"	12' of 8"
3	Single Riser	27	A	12	1+91/Rt.	12'	40'

NOTE: Vertical Riser Pipe shall be extended to 2' minimum above ground water elevation and 4' maximum below proposed ground elevation.



**Ruggles & Bohm, P.A.**  
Engineering, Surveying, Land Planning

2652X  
13  
25

468-B3976  
engg base.dwg  
7/27/05  
3/3/05  
6/5/05