

J.B. MULLER ADDITION

NE 1/4, SEC. 29, T26S, R1E

4422 N. Arkansas Ave.

CONSTRUCT DOUBLE WYE
CLEANOUT WITH RISERS AS
PER THE SEWER SERVICE TABLE.
SEE SHEET NO. 13

MH 12-3
STA. 3+85.91 LINE 12
SEE SHEET NO. 2

MH 12-4
STA. 4+36.19 LINE 12
N 19831.80
E 20249.37
CONSTRUCT STD TYPE P MH
TOP = 1322.77-82
8" STUB (N) = 1312.07

MH 12-5 6+40.52
STA. 6+36.35 LINE 12
N 19831.80
E 20049.22
CONSTRUCT STD TYPE P MH
TOP = ~~1321.93~~ 1322.23

N 19798.76
E 20039.72

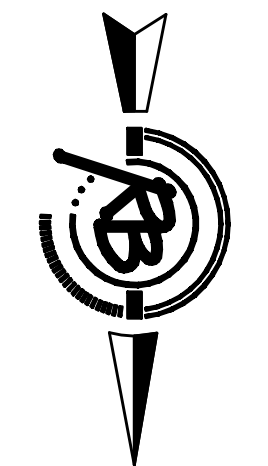
MH 12-6 7+82.79
STA. 7+79.90-LINE 12
N 19728.32
E 19949.73
CONSTRUCT STD TYPE P MH
TOP = 1322.72-86
8" STUB (N & S) = 1313.30

7+66.92

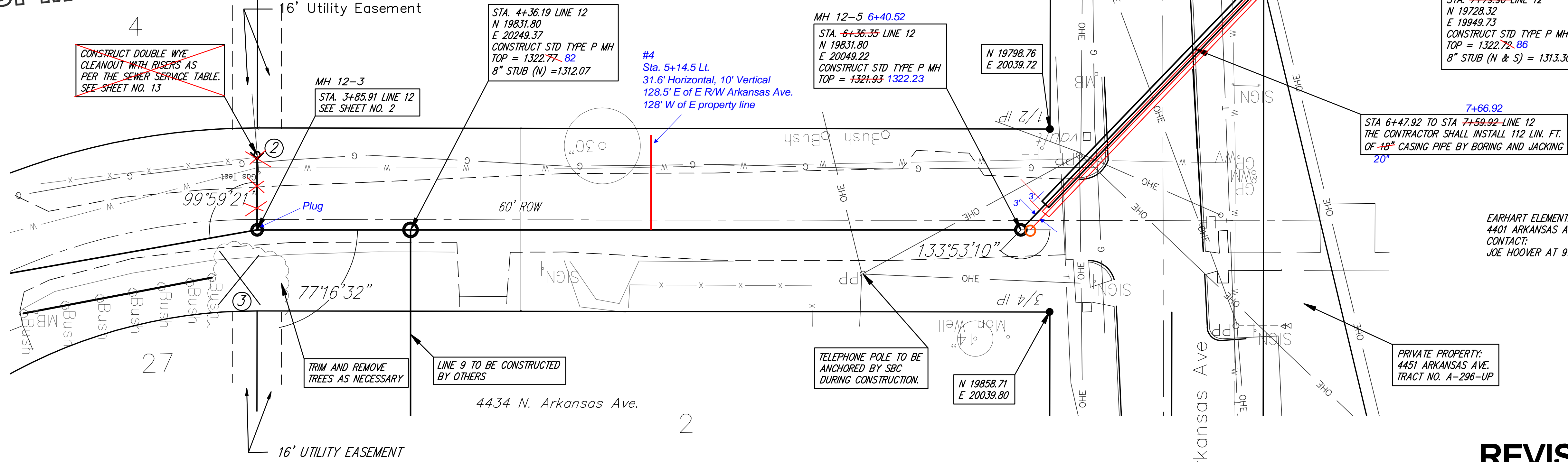
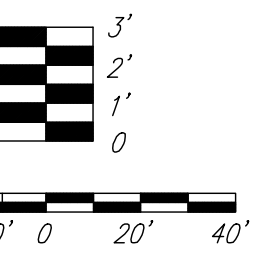
STA 6+47.92 TO STA 7+59.92-LINE 12
THE CONTRACTOR SHALL INSTALL 112 LIN. FT.
OF 18" CASING PIPE BY BORING AND JACKING
20"

EARHART ELEMENTARY SCHOOL
4401 ARKANSAS AVE
CONTACT:
JOE HOOVER AT 973-2239

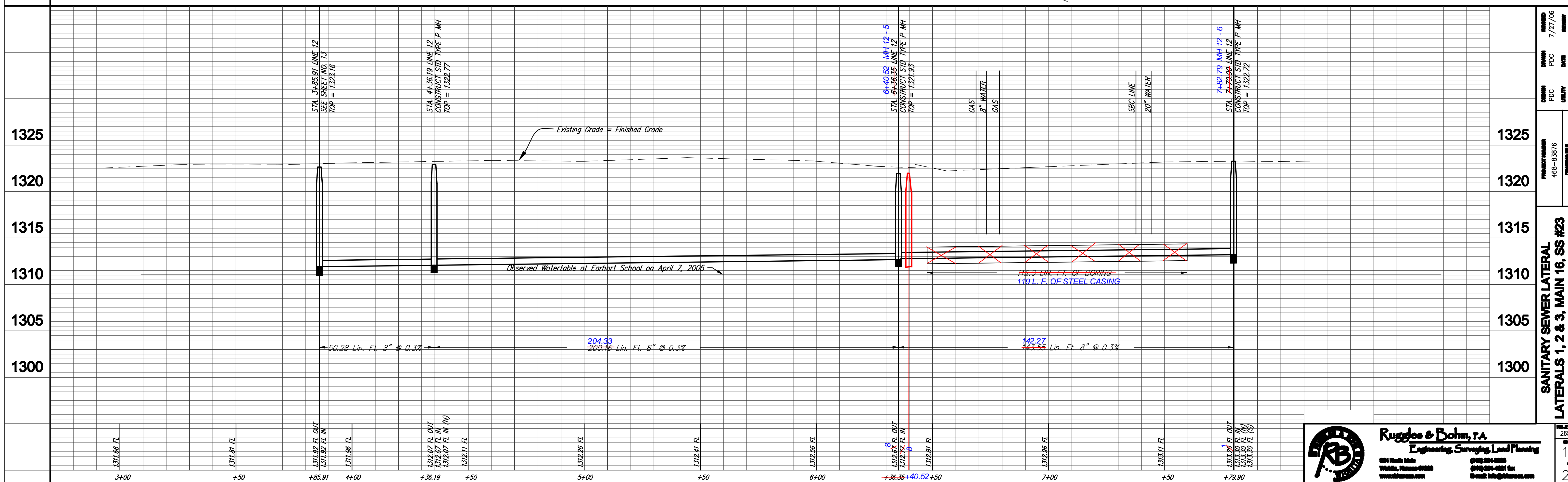
PRIVATE PROPERTY:
4451 ARKANSAS AVE.
TRACT NO. A-296-UP



Scale 1" = 20' (Horiz.)
1" = 5' (Vert.)



REVISED: 6/27/07



DATE	7/27/06
DESIGNED BY	PCB
CHECKED BY	PCB
DATE	4/5/05
PROJECT NUMBER	468-B3976
CONTRACTOR	engg base. dng
SANITARY SEWER LATERAL	
LATERALS 1, 2 & 3, MAIN 16, SS #23	
LINE 12	

Ruggles & Bohm, P.A.
Engineering, Surveying, Land Planning

604 North 14th
Walla, Kansas 67220
www.rugglesandbohm.com

(913) 294-0200
(913) 294-0201 fax
rbohm@rugglesandbohm.com

2652X
14
25