

BENCHMARKS:

BM #1: COW Disc in top of curb adjacent to the fire hydrant at the SW corner of Yosemite and Lamp Cir. Elev. = 146.73 (City Datum)

BM #2: COW Disc in top of curb adjacent to the fire hydrant on the west side of Westgate along the southwesterly line of Lot 13, Block B, Southern Ridge Addition. Elev. = 144.10 (City Datum)

Sta 3+23.9, Line 1 = Sta 0+00, Line 2 Construct Std. Manhole 1 - 4" Stub w/ Riser. Rim Elev. = 146.10 Match Point MH Depth = 7.94'

Sta 0+20.1 to Sta 0+64.1 Install 44.0 L.F. flowable fill per City specs.

Scale: 1" = 40' Horizontal
1" = 5' Vertical
• = Iron

MH Depth = 7.49'
Sta 0+76.0, Line 1 Construct Std. Manhole 1 - 4" Stub w/ Riser. Rim Elev. = 144.80

Sta 0+28.0, Line 1 Begin Construction of 8" Sewer at End of Existing Stub (28' L)

Sta 0+00, Line 1 Existing Manhole

Sta 6+36.2 to Sta 6+92.2 Install 56.0 L.F. flowable fill per City specs.

Sta 7+13.2, End Line 2 Construct Std. Manhole. 2 - 4" Stubs w/ Risers Rim Elev. = 150.10 MH Depth = 9.54'

Sta 6+04.1, Line 2 MH Depth = 9.38' Construct Std. Manhole 1 - 4" Stub w/ Riser. Rim Elev. = 149.50

SEWER SERVICE TABLE

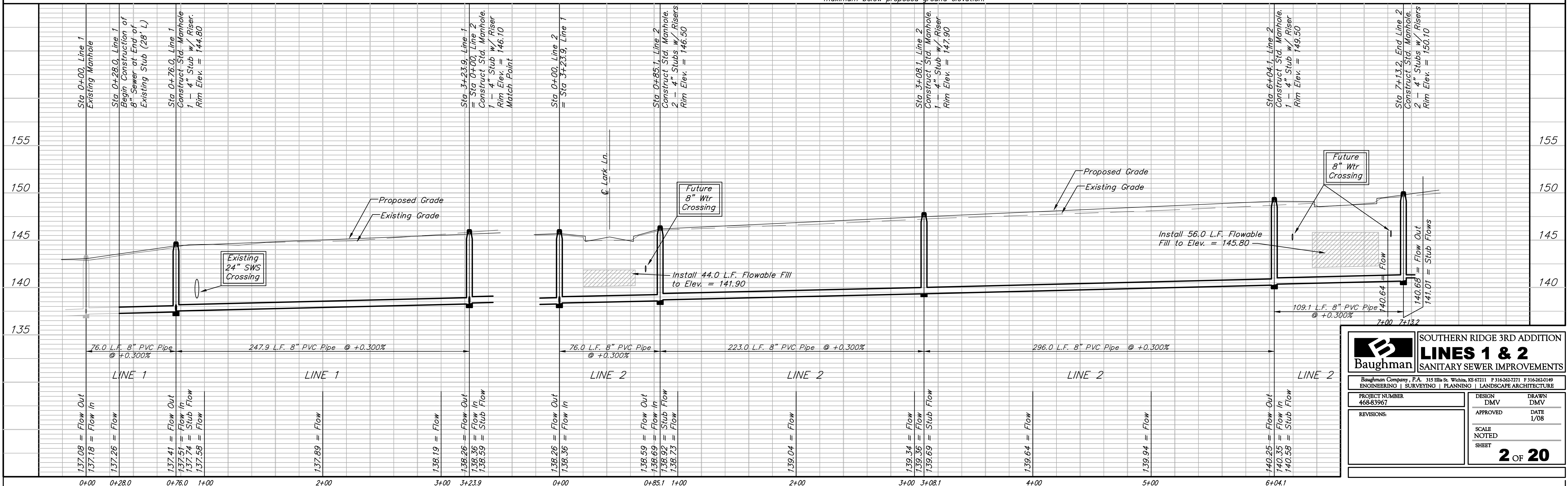
DISTANCE FROM		NUMBER	TYPE	LOCATION			FOR INFORMATION ONLY		DISTANCE FROM		
UPSTREAM MH	DOWNSTREAM MH			LOT NO.	BLOCK NO.	LINE NO.	STATION \ DIRECTION	APPROXIMATE LENGTH 4" PIPE	VERTICAL	HORIZONTAL	UPSTREAM MH
-	-	1	4" Stub w/ Riser	1	B	1	0+76.0	4.5'	11'	153.9'	69.1'
229.9'	19'	2	8" X 4" Tee	2	B	1	0+95/Lt.	5'	13'	218.1'	77.9'
158.9'	89'	3	8" X 4" Tee	3	B	1	1+65/Lt.	5'	18'	143.1'	152.9'
78.9'	169'	4	8" X 4" Tee	4	B	1	2+45/Lt.	5'	24'	69.1'	226.9'
-	-	5	4" Stub w/ Riser	5	B	1	3+23.9	5'	9'	-	-
-	-	6	4" Stub w/ Riser	1	C	2	0+85.1	5'	14'	-	-
-	-	7	4" Stub w/ Riser	2	C	2	0+85.1	5'	10'	-	-
78.9'	144.1'	8	8" X 4" Tee	3	C	2	1+64/Rt.	5.5'	10'	-	-

SEWER SERVICE TABLE

NUMBER	TYPE	LOCATION			FOR INFORMATION ONLY		DISTANCE FROM		
		LOT NO.	BLOCK NO.	LINE NO.	STATION \ DIRECTION	APPROXIMATE LENGTH 4" PIPE	VERTICAL	HORIZONTAL	UPSTREAM MH
9	8" X 4" Tee	4	C	2	2+39/Rt.	5.5'	10'	153.9'	69.1'
10	4" Stub w/ Riser	5	C	2	3+08.1	6'	12'	-	-
11	8" X 4" Tee	6	C	2	3+86/Rt.	6.5'	10'	218.1'	77.9'
12	8" X 4" Tee	7	C	2	4+61/Rt.	6.5'	10'	143.1'	152.9'
13	8" X 4" Tee	8	C	2	5+35/Rt.	6.5'	10'	69.1'	226.9'
14	4" Stub w/ Riser	9	C	2	6+04.1	6.5'	12'	-	-
15	4" Stub w/ Riser	10	C	2	7+13.2	6.5'	13'	-	-
16	4" Stub w/ Riser	11	C	2	7+13.2	6.5'	13'	-	-

NOTE: Vertical Riser Pipe shall be extended to 2' minimum above ground water elevation and 4' maximum below proposed ground elevation.

All trench and manhole excavation areas from Sta. 0+28.0 to Sta. 3+23.9, Line 1 and Sta. 0+85.1 to Sta. 7+13.2, Line 2 shall be backfilled with sand. The sand backfill shall be within two feet of existing grade and shall be water-jetted and vibrated during backfilling.



Baughman SOUTHERN RIDGE 3RD ADDITION
SEWER SERVICE TABLE
SEWER SERVICE TABLE
SEWER SERVICE TABLE

PROJECT NUMBER: 468-83967
 DESIGN: DMV
 APPROVED: [Signature]
 DATE: 1/08
 SCALE: NOTED
 SHEET: 2 OF 20