

BENCHMARKS:

BM #1: COW Disc in top of curb adjacent to the fire hydrant at the SW corner of Yosemite and Lamp Cir. Elev. = 146.73 (City Datum)

BM #2: COW Disc in top of curb adjacent to the fire hydrant on the west side of Westgate along the southwesterly line of Lot 13, Block B, Southern Ridge Addition. Elev. = 144.10 (City Datum)

Sta 0+17.5 to Sta 0+62.5
Install 45.0 L.F. flowable fill per City specs.

Sta 0+00, Line 6
Begin at Stub in Existing Manhole and Extend 8" Sewer Southwest.

Sta 0+80.6, Line 6
= Sta 0+00, Line 6A
Construct Std. Manhole.
Rim Elev. = 148.20
MH Depth = 7.16'

Sta 0+78.0, End Line 6A
Construct Std. Shallow Manhole.
1 - 4" Stub w/ Riser
Rim Elev. = 147.40
MH Depth = 6.05'

MH Depth = 9.76'
Sta 4+43.6, Line 6
Construct Std. Manhole.
Rim Elev. = 152.10

Sta 2+27.6, Line 6
Construct Std. Shallow Manhole.
1 - 4" Stub (W)
Rim Elev. = 146.40
MH Depth = 4.74'

Sta 4+61.5 to Sta 4+98.5
Install 37.0 L.F. flowable fill per City specs.

Sta 5+26.2, Line 6
= Sta 0+00, Line 6B
Construct Std. Manhole
2 - 4" Stubs w/ Risers.
Rim Elev. = 151.80
Match Point
MH Depth = 9.15'

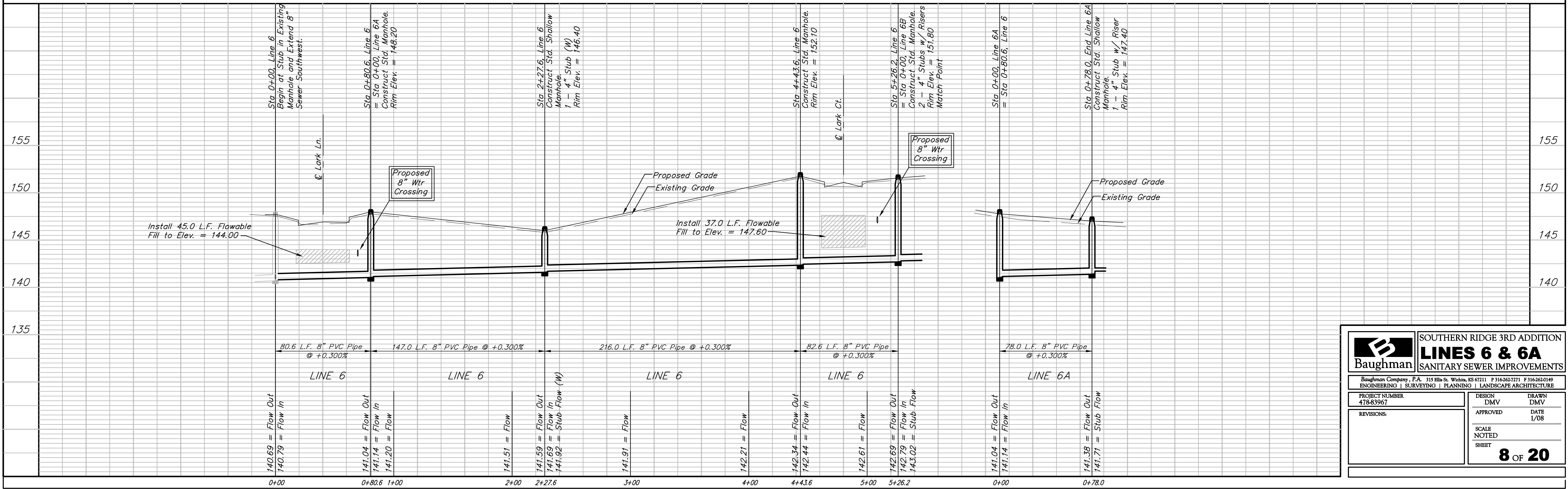
All trench and manhole excavation areas from Sta. 0+00 to Sta. 0+78.0, Line 6A shall be backfilled with sand. The sand backfill shall be within two feet of existing grade and shall be water-jetted and vibrated during backfilling.

Scale: 1" = 40' Horizontal
1" = 5' Vertical
• = Iron

SEWER SERVICE TABLE

NUMBER	TYPE	LOCATION			FOR INFORMATION ONLY		
		LOT NO.	BLOCK NO.	LINE NO.	STATION \ DIRECTION	APPROXIMATE LENGTH 4" PIPE VERTICAL	HORIZONTAL
38	4" Stub w/ Riser	72	C	6	5+26.2	6.5'	8'
39	4" Stub w/ Riser	71	C	6	5+26.2	6.5'	8'
40	4" Stub w/ Riser	57	C	6A	0+78.0	6.5'	12'

NOTE: Vertical Riser Pipe shall be extended to 2' minimum above ground water elevation and 4' maximum below proposed ground elevation.



Baughman SOUTHERN RIDGE 3RD ADDITION
ENGINEERING | SURVEYING | PLANNING | LANDSCAPE ARCHITECTURE
PROJECT NUMBER 478-83967
DESIGN DMV
APPROVED DATE 1/08
SCALE NOTED SHEET 8 OF 20