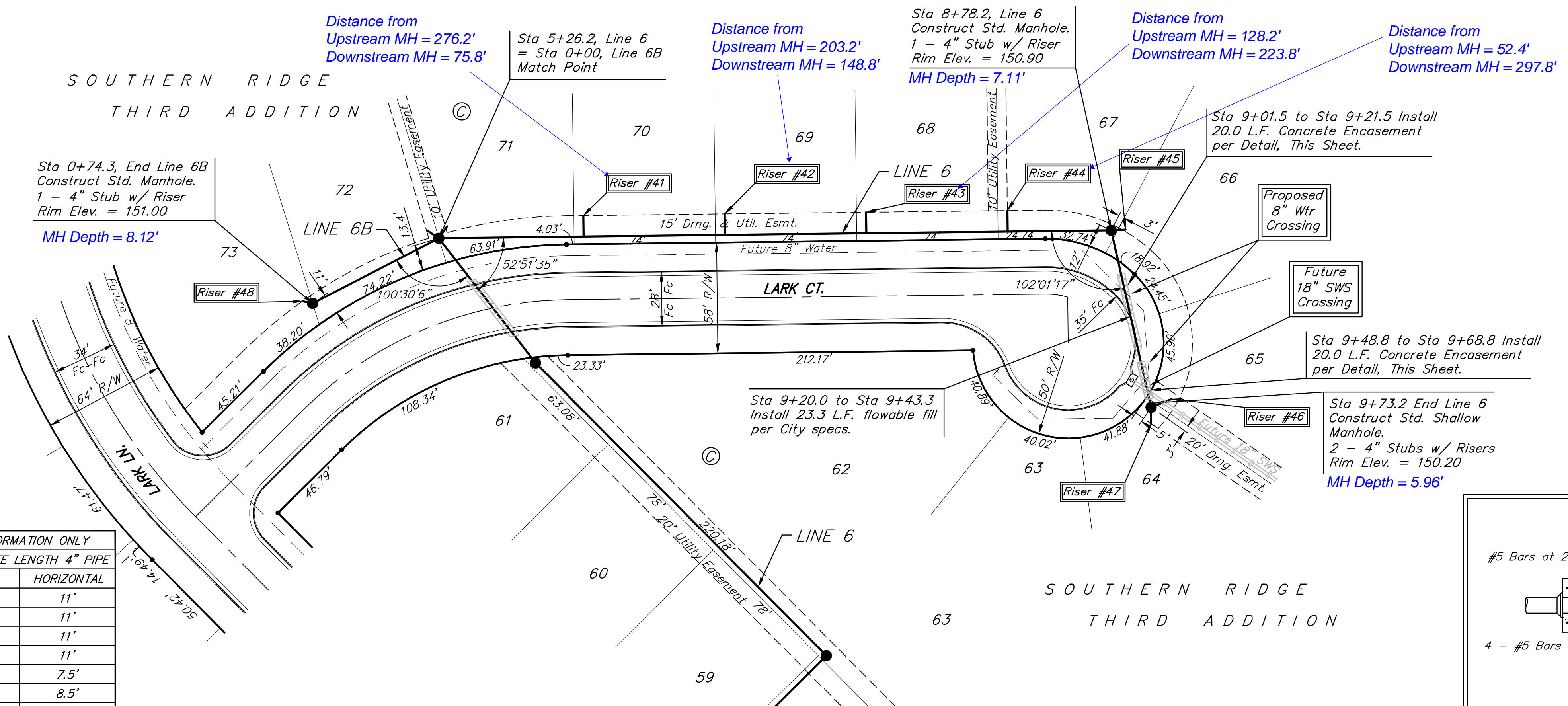


BENCHMARKS:

BM #1: COW Disc in top of curb adjacent to the fire hydrant at the SW corner of Yosemite and Lamp Cir. Elev. = 146.73 (City Datum)

BM #2: COW Disc in top of curb adjacent to the fire hydrant on the west side of Westgate along the southwesterly line of Lot 13, Block B, Southern Ridge Addition. Elev. = 144.10 (City Datum)



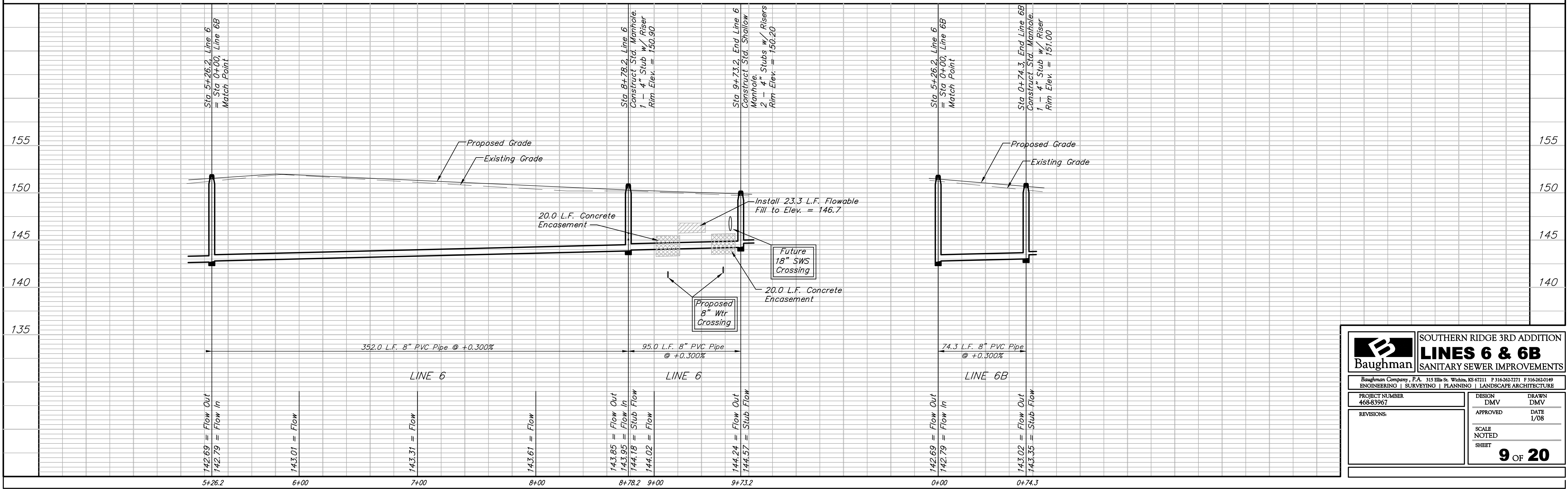
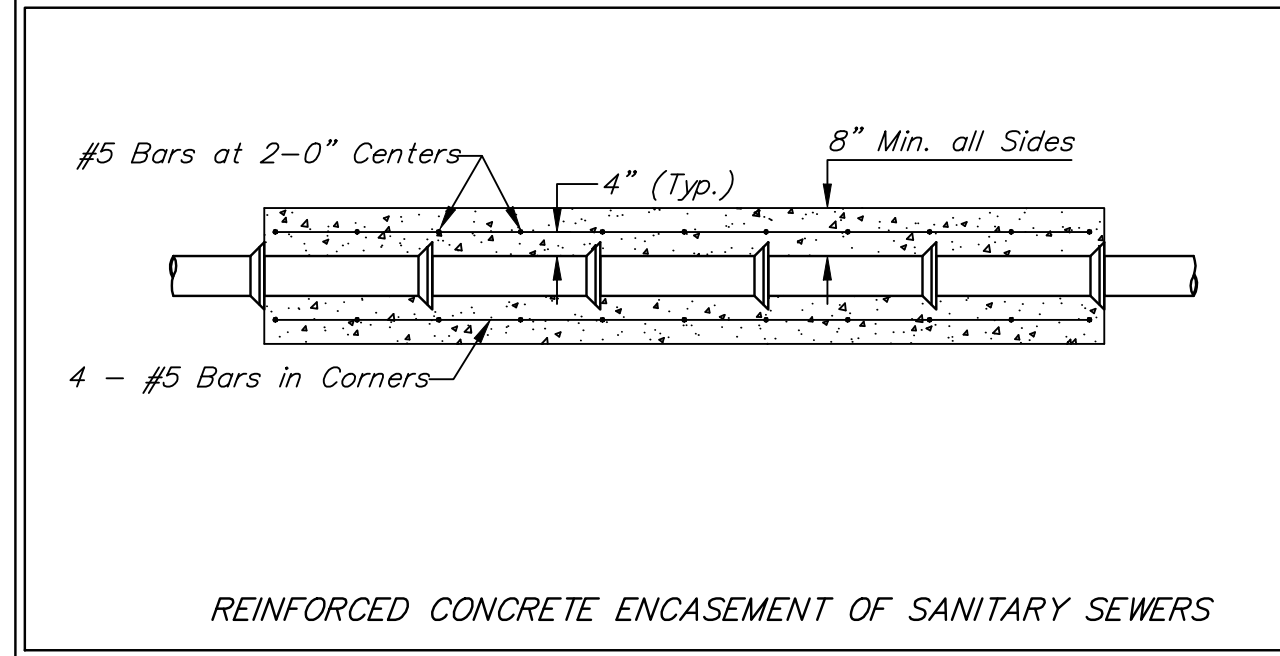
Scale: 1" = 40' Horizontal
1" = 5' Vertical
• = Iron

All trench and manhole excavation areas from Sta. 5+26.2 to Sta. 9+73.2, Line 6 and Sta. 0+00 to Sta. 0+74.3, Line 6B shall be backfilled with sand. The sand backfill shall be within two feet of existing grade and shall be water-jetted and vibrated during backfilling.

SEWER SERVICE TABLE

NUMBER	TYPE	LOCATION				FOR INFORMATION ONLY	
		LOT NO.	BLOCK NO.	LINE NO.	STATION \ DIRECTION	APPROXIMATE LENGTH 4" PIPE	
						VERTICAL	HORIZONTAL
41	8" X 4" Tee	70	C	6	6+02/Lt.	6.5'	11'
42	8" X 4" Tee	69	C	6	6+75/Lt.	6'	11'
43	8" X 4" Tee	68	C	6	7+50/Lt.	5.5'	11'
44	8" X 4" Tee	67	C	6	8+24/Lt.	5'	11'
45	4" Stub w/ Riser	66	C	6	8+78.2	4.5'	7.5'
46	4" Stub w/ Riser	65	C	6	9+73.2	3.5'	8.5'
47	4" Stub w/ Riser	64	C	6	9+73.2	3.5'	8.5'
48	4" Stub w/ Riser	73	C	6B	0+74.3	5.5'	5.5'

NOTE: Vertical Riser Pipe shall be extended to 2' minimum above ground water elevation and 4' maximum below proposed ground elevation.



Baughman SOUTHERN RIDGE 3RD ADDITION
LINES 6 & 6B
SANITARY SEWER IMPROVEMENTS

Baughman Company, P.A. 315 Ellis St. Wichita, KS 67211 P 316-262-7271 F 316-262-0149
ENGINEERING | SURVEYING | PLANNING | LANDSCAPE ARCHITECTURE

PROJECT NUMBER: 468-83967 DESIGN: DMV DRAWN: DMV
APPROVED: DATE: 1/08

REVISIONS:

SCALE: NOTED
SHEET: **9 OF 20**