

Main 7, Cowskin Interceptor Sewer Lateral 1, Main 7, Cowskin Interceptor Sewer Lateral 2, Main 7, Cowskin Interceptor Sewer Sanitary Sewer Improvements

CITY OF WICHITA, KANSAS

James L. Armour, P.E. City Engineer

Project Number

468-84025

468-84309

468-84310

O.C.A. Number

744225

744223

744224

GENERAL NOTES:

- Contractor will be required to provide notice to utility companies a minimum of twenty-four (24) hours prior to any excavation, as follows:

Kansas One-Call 687-2470

The Contractor must notify the following in case of an emergency:

Cox Communications 262-4270
 Kansas Gas Service 1-888-482-4950
 Westar Energy 383-8650
 Aquila Energy 1-800-303-0357
 SBC 268-2245
 City of Wichita Water Dept. 268-4563
 City of Wichita Sewer Maint. 268-4024
 City of Wichita Storm Sewer Maint. 268-4090
 City of Wichita Traffic Maint. 268-4034
 Conoco Pipeline Co. 1-800-231-2551
 Southern Star Pipeline Co. 529-6600
 Phillips Pipeline Co. 1-800-766-8230
 Jayhawk Pipeline Co. 1-888-542-9575
 Rural Water District #4 794-8891

- Utility service lines, poles, valve boxes, meters, and etcetera are to be adjusted as necessary by others prior to construction unless the plans specifically call for their adjustment by the Contractor or unless the plans specifically identify a utility to be adjusted by its owner during construction. Existing utilities and their location, as shown on the plans, represent the best information obtainable for design. The Contractor will be required to work around existing utilities within the right-of-way which do not conflict with proposed construction.

- Rubble from the removal of miscellaneous structures and excess excavation which is to be wasted shall be disposed of on sites to be provided by the Contractor. These sites shall be approved by the Engineer as to suitability, appearance and site location. Locations, in the opinion of the Engineer, that will leave an unsightly appearance will not be approved. All disposal sites must be approved by the Kansas Department of Health and Environment. Material either stockpiled or disposed of in a flood plain would require a Kansas State Board of Agriculture permit. Any material dumped in waters of the United States or wetlands is subject to U.S. Corps of Engineers permitting regulations. Any material buried or stockpiled beyond approved construction limits would require additional archaeological investigations unless buried in a previously approved borrow location.

- Trees and shrubs in public right-of-way which are in direct conflict with proposed new construction shall be removed by the Contractor with the Engineer's approval. Trees and shrubs which are not in direct conflict with proposed new construction shall be saved and protected from damage.

- The Contractor shall give all property owners and/or tenants of developed property abutting the construction of this project a minimum of ten (10) days advance notice prior to start of construction.

- The Contractor shall be responsible for preserving property irons. The Contractor will be required to re-establish any property irons which are damaged or destroyed by his construction operations. Such irons shall be re-established by a licensed land surveyor in accordance with state laws.

- All existing and proposed erosion control measures including silt fencing, erosion control mat, straw bales, inlet barriers, and const. entrance shall be maintained throughout construction by the contractor and until project is accepted by the City of Wichita. The on-site engineer shall complete weekly reports on the status of erosion control measures. The contractor shall be required to comply with maintenance and/or replacement of erosion control measures as determined by the on-site engineer until project is accepted by City of Wichita. Maintenance and/or replacement of erosion control measures to be paid by L.S. bid item "Site Clearing & Restoration"

- All excess excavation shall be removed and placed off-site of a location determined by contractor. Cost to be included in "Site Clearing & Restoration" bid item.

- The Contractor shall be responsible for maintaining continuous flow of sewage through construction. Contractor's proposed method for maintaining sewage flow shall be approved by the Engineer. Cost of maintaining flow of sewage through construction will not be paid for directly and this cost shall be considered as subsidiary to the other pay items of work.

- Contractor shall be required to backfill front loaded sanitary sewer trenches with sand, water-jetted and vibrated. Cost to be incidental to sanitary sewer pipe cost.

Benchmarks

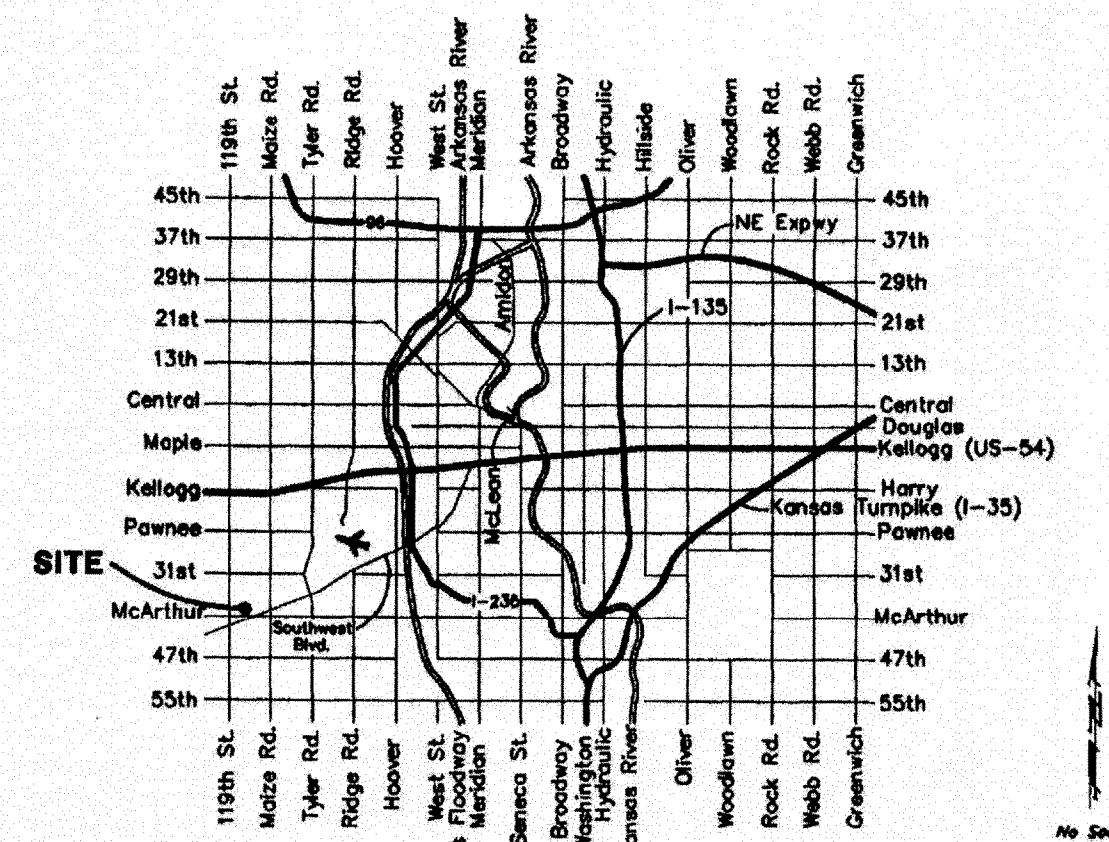
BM #1: Small RR spike in 2nd PP north of K-42 Highway, west side of Maize
Elev. = 1331.01 (M.S.L.)

BM #2: Small RR spike in PP east of East 1/4 Corner (G)
Elev. = 1334.40 (M.S.L.)

BM #3: "□" Top Headwall southeast corner K-42 Highway and Maize (County BM with City Datum)
Elev. = 1331.44 (M.S.L.)

Sheet Index

Title Sheet	1
Line 1	2-5
Line 1A	6
Line 1B & 1C	7
Clean Outs	8
Standard Manhole Detail	9
Ring & Cover Detail	10
Vertical Riser Detail	11
Erosion Control BMP's	12-15
Clean Out Detail	16
Coordinate Sheet	17



Vicinity Map

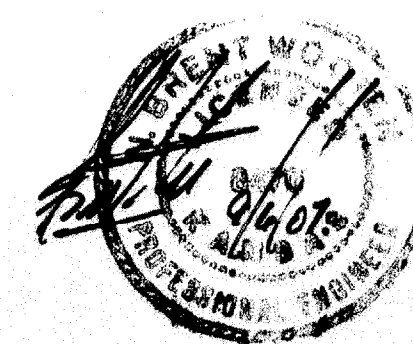
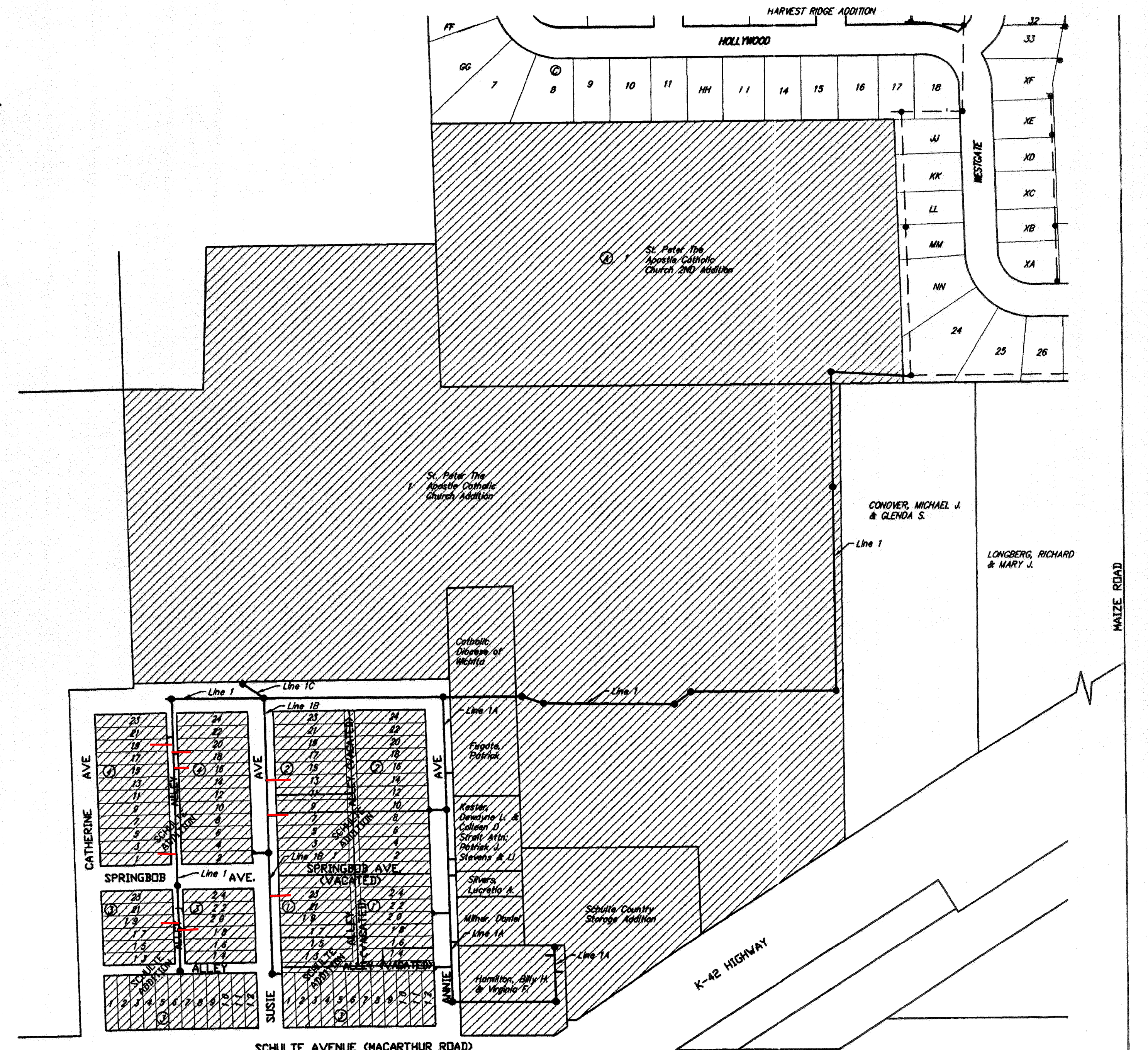
- When connecting to existing manhole or stub, the contractor shall reshape manhole bottom or adjust the existing stub's alignment or elevation as necessary. Cost shall be subsidiary to project.

- All areas disturbed during construction shall be seeded, fertilized, and covered with erosion control mat as follows (Permanent Seeding):

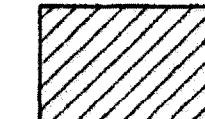
Seed: Kansas Premium Fescue Blend: 8 lbs./1000 sq. ft.
 Fertilizer: 12-24-12: 850 lbs./acre
 Erosion Control Mat: Curlex I

All costs associated with seeding, fertilizing, and installing erosion control mat shall be included in bid item "Project Seeding." All seeding operations shall conform to City of Wichita Standard Specifications. Installation of Erosion Control Mat shall conform to manufacturer's specifications.

Dondlinger & Sons Construction Co. - Contractor
 J. Woods - City of Wichita, Inspector
 As-built
 Stubs, Risers and Cleanouts
 Date Released: 01/10/2009
 pdf: APR 04/15/2009



Benefit District



Baughman Company, P.A. 315 Bill St. Wichita, KS 67211 P 316-262-7271 F 316-262-0145
 ENGINEERING | SURVEYING | PLANNING | LANDSCAPE ARCHITECTURE