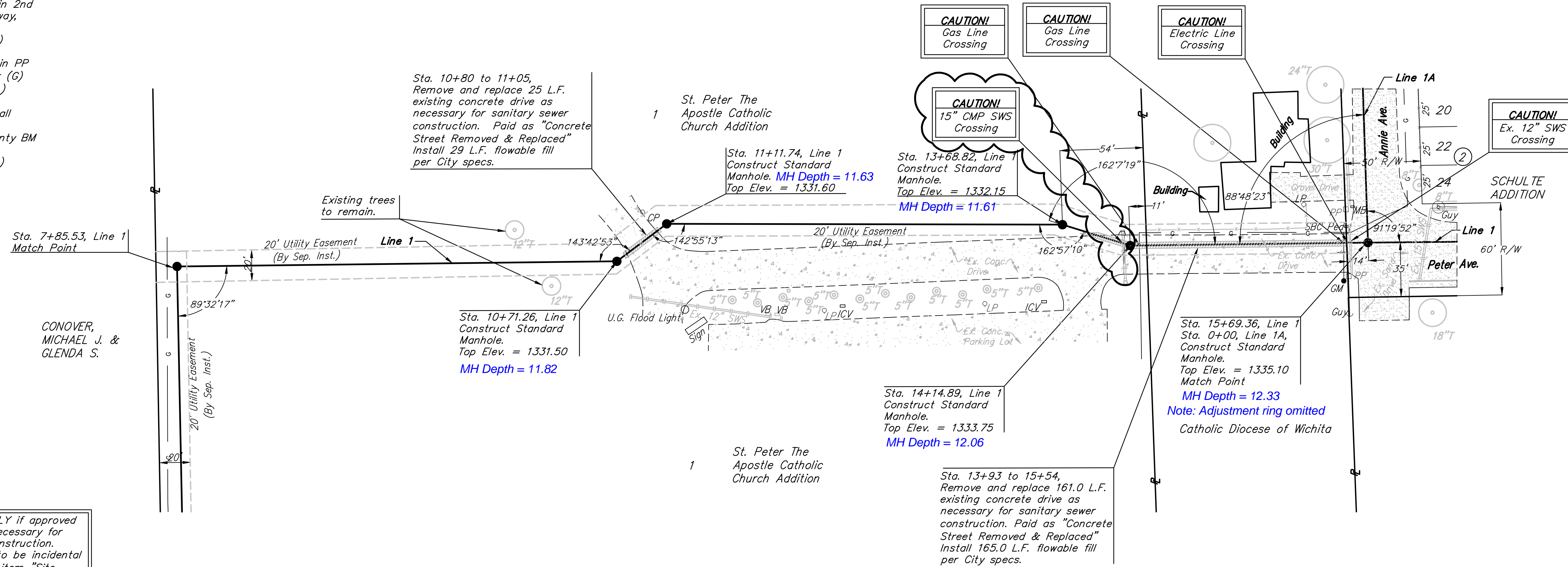
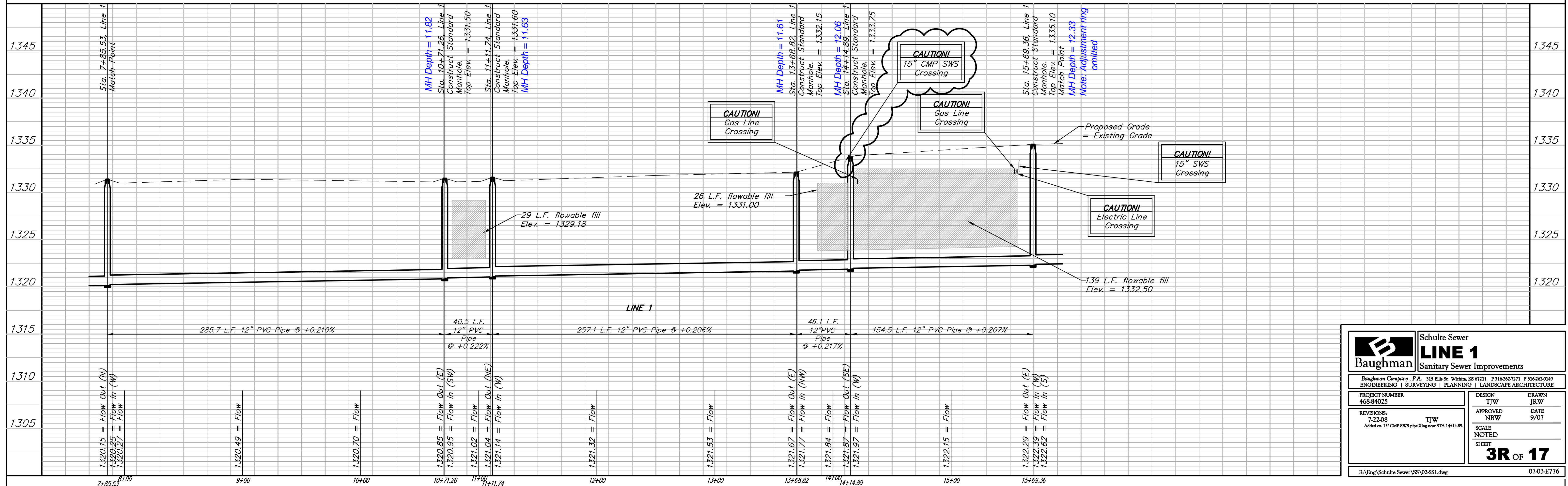


Benchmarks:
 BM #1: Small RR spike in 2nd PP north of K-42 Highway, west side of Maize
 Elev. = 1331.01 (M.S.L.)
 BM #2: Small RR spike in PP east of East 1/4 Corner (G)
 Elev. = 1334.40 (M.S.L.)
 BM #3: "□" Top Headwall southeast corner K-42 Highway and Maize (County BM with City Datum)
 Elev. = 1331.44 (M.S.L.)

SCALE:
 1" = 40' HORIZONTAL
 1" = 5' VERTICAL
 • = IRON



Remove trees ONLY if approved by Engineer as necessary for sanitary sewer construction. Cost of removal to be incidental to lump sum bid item "Site Clearing & Restoration".



Baughman		Schulte Sewer	
PROJECT NUMBER 468-84025		LINE 1 Sanitary Sewer Improvements	
Baughman Company, P.A. 315 Ellis St. Wichita, KS 67211 P 316-262-7271 F 316-262-0149 ENGINEERING SURVEYING PLANNING LANDSCAPE ARCHITECTURE			
REVISIONS: 7-22-08 Added ex. 15" CMP SWS pipe along STA 14+14.89.	TJW	DESIGN TJW	DRAWN JRW
APPROVED NBW	DATE 9/07	SCALE NOTED	SHEET 3R OF 17
E:\Eng\Schulte Sewer\SS\02-SS1.dwg			07-03-ET76