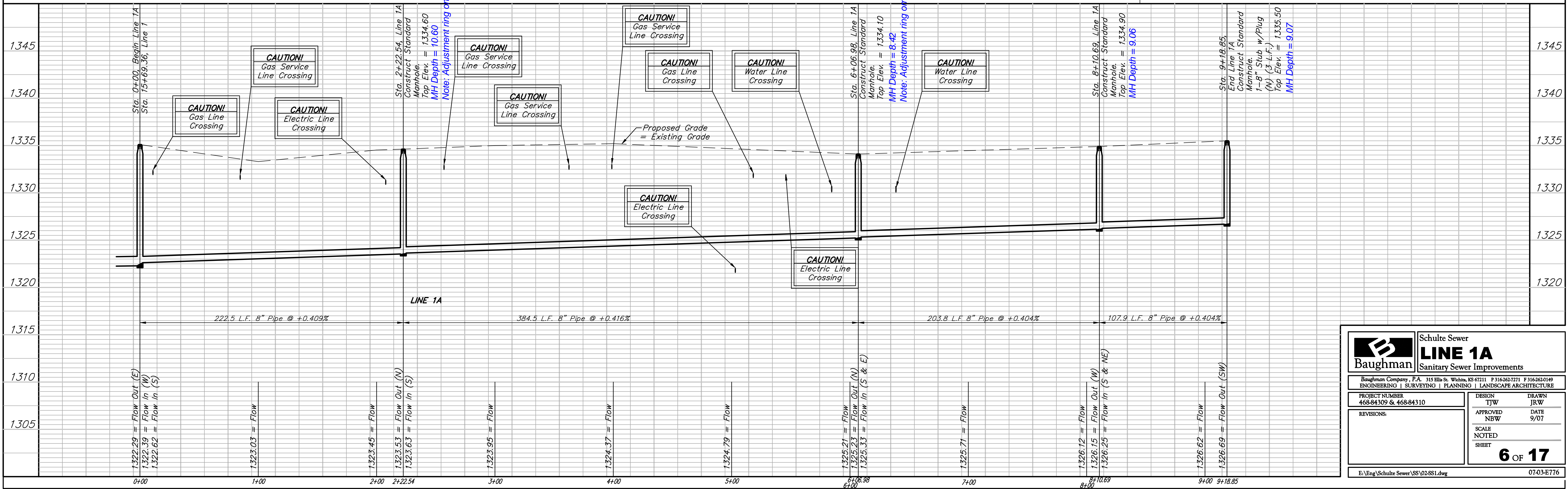
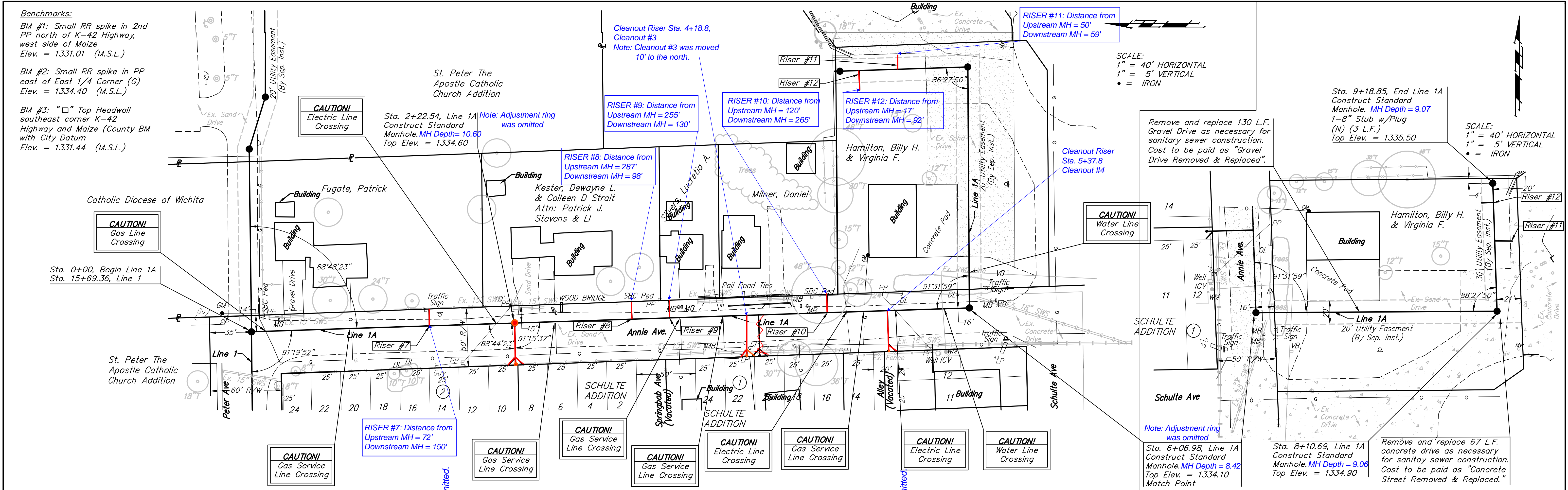


**Benchmarks:**

BM #1: Small RR spike in 2nd PP north of K-42 Highway, west side of Maize  
Elev. = 1331.01 (M.S.L.)

BM #2: Small RR spike in PP east of East 1/4 Corner (G)  
Elev. = 1334.40 (M.S.L.)

BM #3: "□" Top Headwall southeast corner K-42 Highway and Maize (County BM with City Datum)  
Elev. = 1331.44 (M.S.L.)



		<b>Schulte Sewer</b> <b>LINE 1A</b> Sanitary Sewer Improvements	
<small>Baughman Company, P.A. 315 Ellis St. Wichita, KS 67211 P 316-262-7271 F 316-262-0149          ENGINEERING   SURVEYING   PLANNING   LANDSCAPE ARCHITECTURE</small>			
PROJECT NUMBER 468-84309 & 468-84310		DESIGN DRAWN JTJW JRW	
REVISIONS:		APPROVED DATE NBW 9/07	
SCALE NOTED		SHEET <b>6 OF 17</b>	
<small>E:\Eng\Schulte Sewer\SS\02-SS1.dwg</small>			<small>07-03-E776</small>