

Benchmarks:
 BM #1: Small RR spike in 2nd PP north of K-42 Highway, west side of Maize
 Elev. = 1331.01 (M.S.L.)
 BM #2: Small RR spike in PP east of East 1/4 Corner (G)
 Elev. = 1334.40 (M.S.L.)
 BM #3: "□" Top Headwall southeast corner K-42 Highway and Maize (County BM with City Datum)
 Elev. = 1331.44 (M.S.L.)

Sta. 5+37.8
 Sta. 4+28.8

St. Peter The Apostle Catholic Church Addition

Sta. 2+22.54, Line 1A
 Construct Standard Manhole.
 Top Elev. = 1334.60

SCALE:
 1" = 40' HORIZONTAL
 1" = 5' VERTICAL
 • = IRON

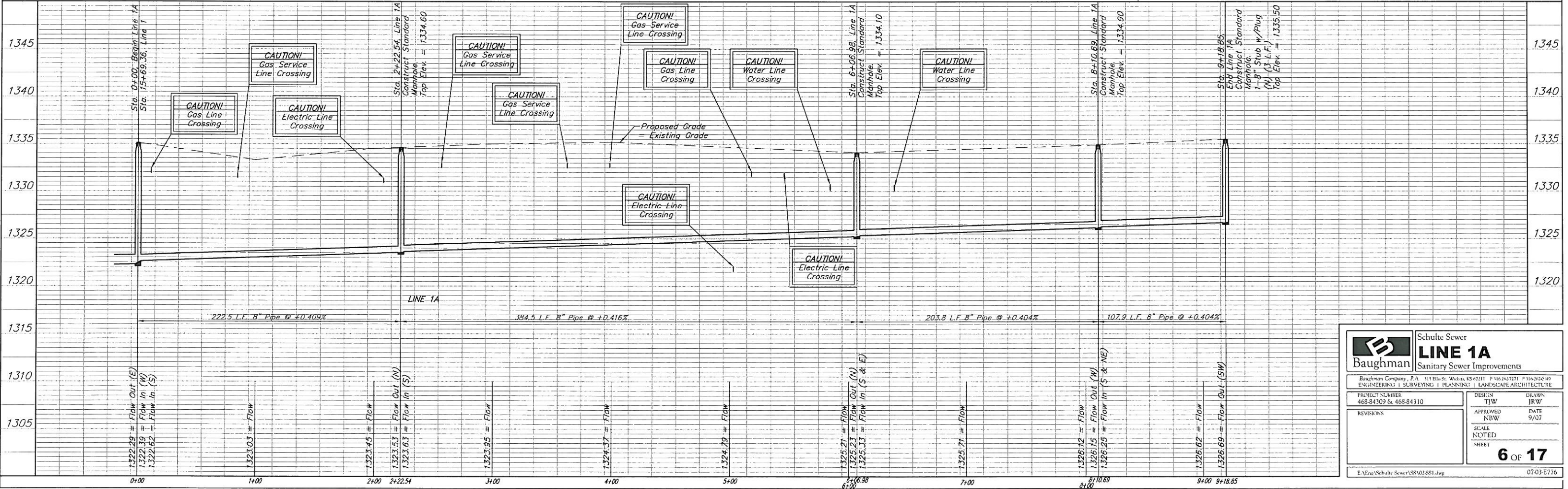
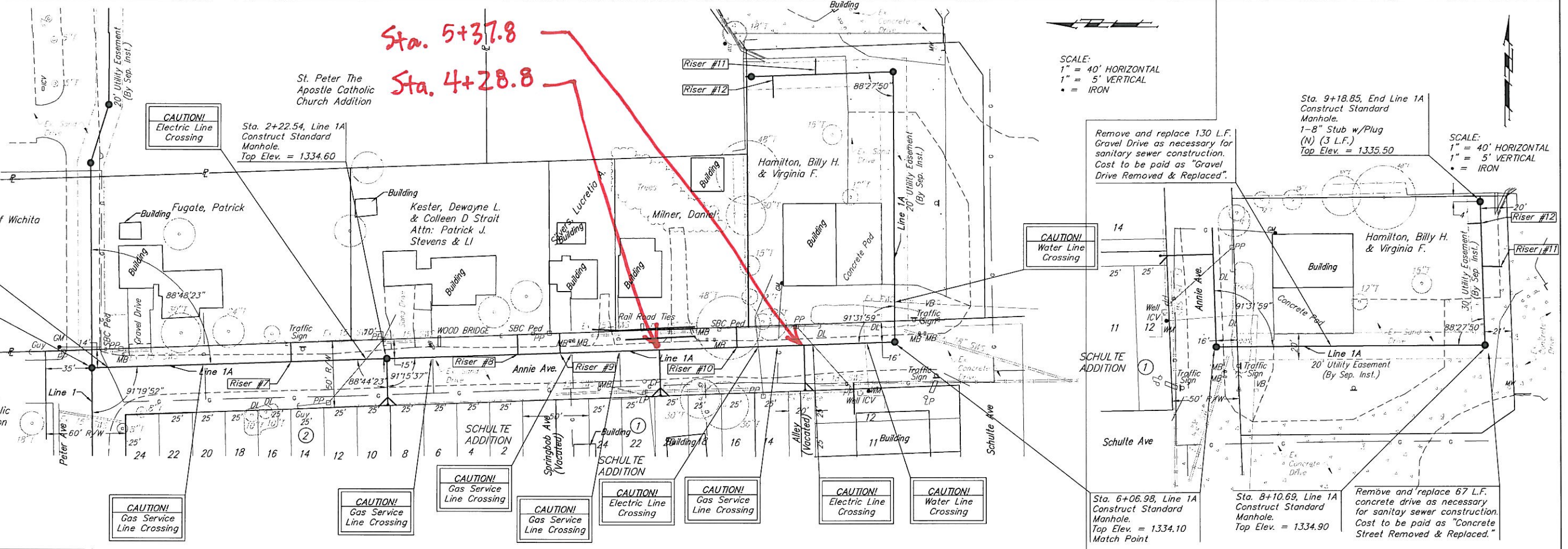
Sta. 9+18.85, End Line 1A
 Construct Standard Manhole.
 1-8" Stub w/Plug (N) (3 L.F.)
 Top Elev. = 1335.50

SCALE:
 1" = 40' HORIZONTAL
 1" = 5' VERTICAL
 • = IRON

Remove and replace 130 L.F. Gravel Drive as necessary for sanitary sewer construction. Cost to be paid as "Gravel Drive Removed & Replaced".

Remove and replace 67 L.F. concrete drive as necessary for sanitary sewer construction. Cost to be paid as "Concrete Street Removed & Replaced".

Catholic Diocese of Wichita
 CAUTION! Gas Line Crossing
 Sta. 0+00, Begin Line 1A
 Sta. 15+69.36, Line 1



		Schulte Sewer LINE 1A Sanitary Sewer Improvements	
		Baughman Company, P.A. 111 E. 1st St. Wichita, KS 67211 P 316.262.7271 F 316.262.0149 ENGINEERING SURVEYING PLANNING LANDSCAPE ARCHITECTURE	
PROJECT NUMBER 468-84309 & 468-84310		DESIGN TJW DRAWN JRW	
REVISIONS		APPROVED NBW DATE 9/07	
SCALE NOTED SHEET		6 OF 17	
E:\A\Schulte Sewer\SS\02\SS1.dwg		07-03-E776	