

BENCHMARK:
 BM #5 - COW Benchmark 17.2' South and 48.0' West of the Centerlines of 37th St. North and Hoover Road.
 B.L. Sta. 159+79.1, 16.9' Rt.
 Elev. = 1333.68 (MSL)

Reseed 400 L.F. According to General Note 19 as Measured Along the Force Main from Sta. 22+00 to Sta. 26+00.

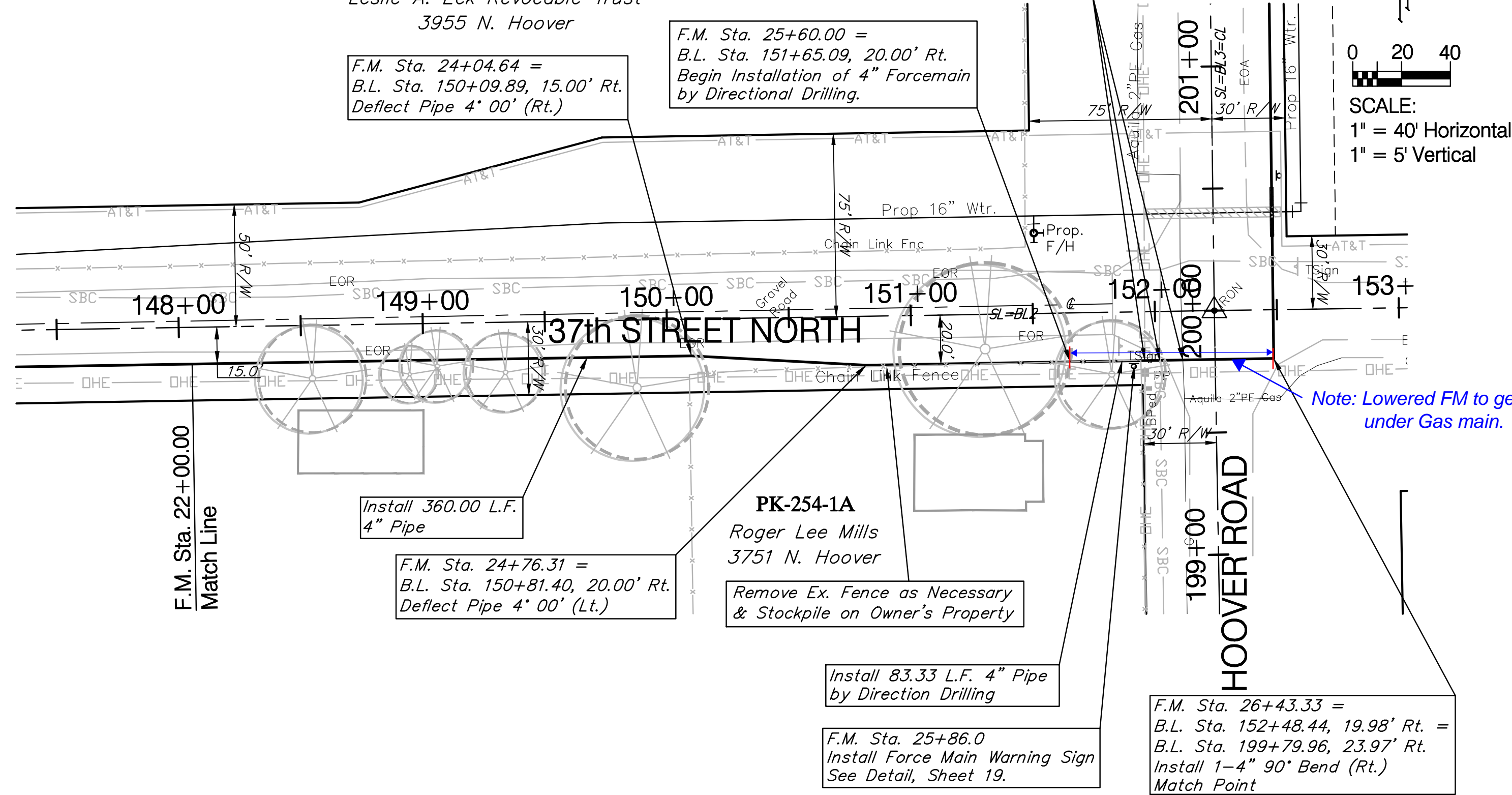
CAUTION!
 Existing O/H Elec U/G AT&T 2" Gas Crossings

PK-213-1
 Leslie A. Eck Revocable Trust
 3955 N. Hoover

F.M. Sta. 24+04.64 = B.L. Sta. 150+09.89, 15.00' Rt. Deflect Pipe 4' 00' (Rt.)

F.M. Sta. 25+60.00 = B.L. Sta. 151+65.09, 20.00' Rt. Begin Installation of 4" Forcemain by Directional Drilling.

SCALE:
 1" = 40' Horizontal
 1" = 5' Vertical



BENCHMARK:
 BM #5 - COW Benchmark 17.2' South and 48.0' West of the Centerlines of 37th St. North and Hoover Road.
 B.L. Sta. 159+79.1, 16.9' Rt.
 Elev. = 1333.68 (MSL)

F.M. Sta. 26+92.50 = B.L. Sta. 151+65.09, 20.00' Rt. End Installation of 4" Forcemain by Directional Drilling.

Reseed 408 L.F. According to General Note 19 as Measured Along the Force Main from Sta. 26+92 to Sta. 31+00.

SCALE:
 1" = 40' Horizontal
 1" = 5' Vertical

