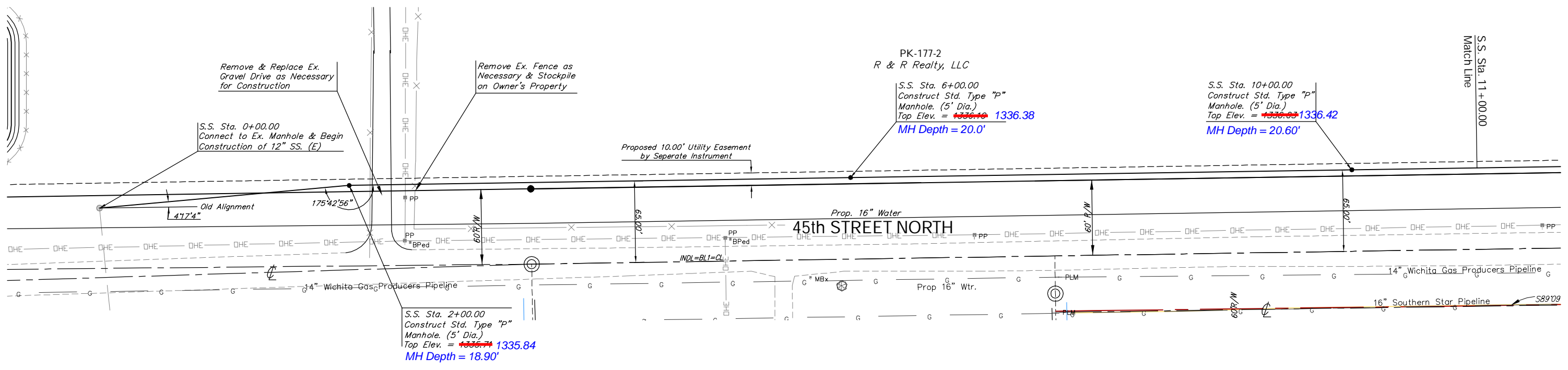
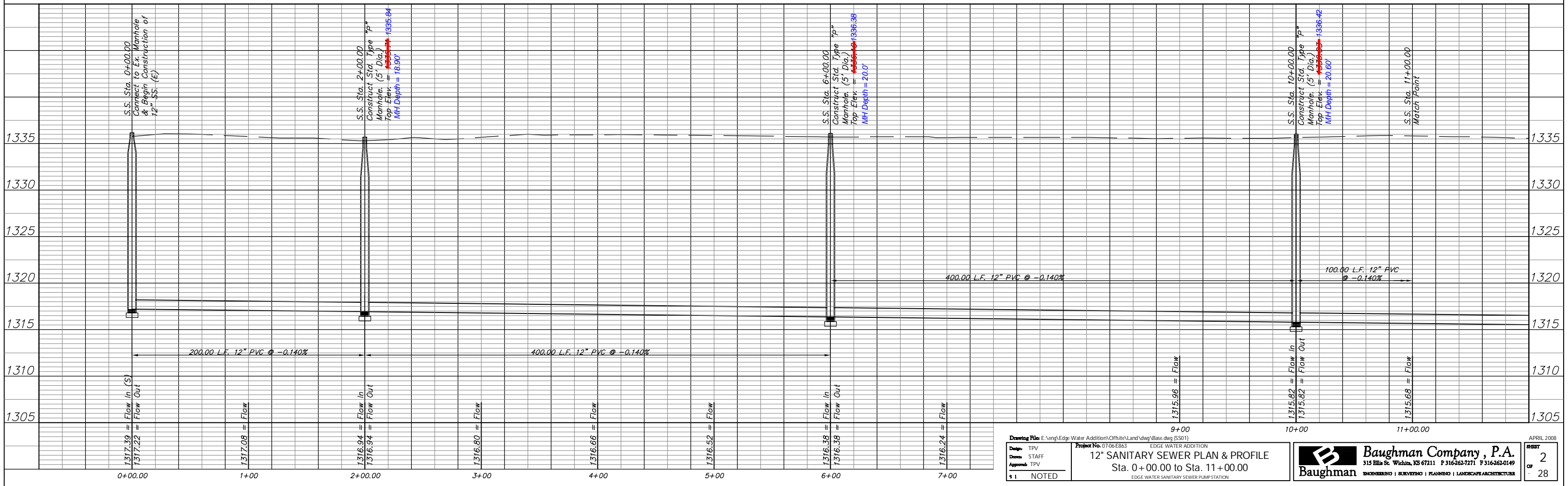


Reseed 1100 L.F. According to General Note 19 as Measured Along the Sewer Line from Sta. 0+00 to Sta. 11+00.



Revised 9-16-08 TPV  
Moved SS Line 5' North of PL



Design: TPV Drawn: STAFF Approved: TPV	Project No. 0706-EB63 <b>12" SANITARY SEWER PLAN &amp; PROFILE</b> Sta. 0+00.00 to Sta. 11+00.00 EDGE WATER SANITARY SEWER PUMP STATION	<b>Baughman Company, P.A.</b> 315 Ella St. Wichita, KS 67211 P 316-262-7271 F 316-262-0149 ENGINEERING   SURVEYING   PLANNING   LANDSCAPE ARCHITECTURE	APRIL 2008 SHEET <b>2</b> OF <b>28</b>
--	--	--	--