

CONSTRUCTION PLANS  
SANITARY SEWER EXTENSIONS

**HIGH POINT WEST ADDITION**  
TO  
**THE CITY OF WICHITA, KANSAS**

**LATERAL 58, COWSKIN INTERCEPTOR SEWER**

JAMES L. ARMOUR, P.E. - CITY ENGINEER  
PROJECT NO. 468-84500  
OCA NO. 744286

**GENERAL NOTES**

- USGS Datum.
- Contractor will be required to provide a minimum advance notice of twenty-four (24) hours to utility companies prior to starting any excavation as follows:  
  

Kansas One-Call	1-800-344-7233
-----------------	----------------

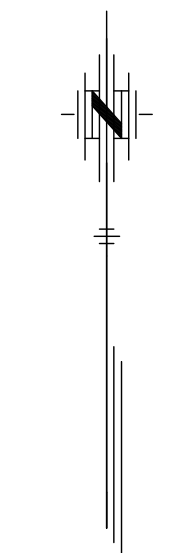
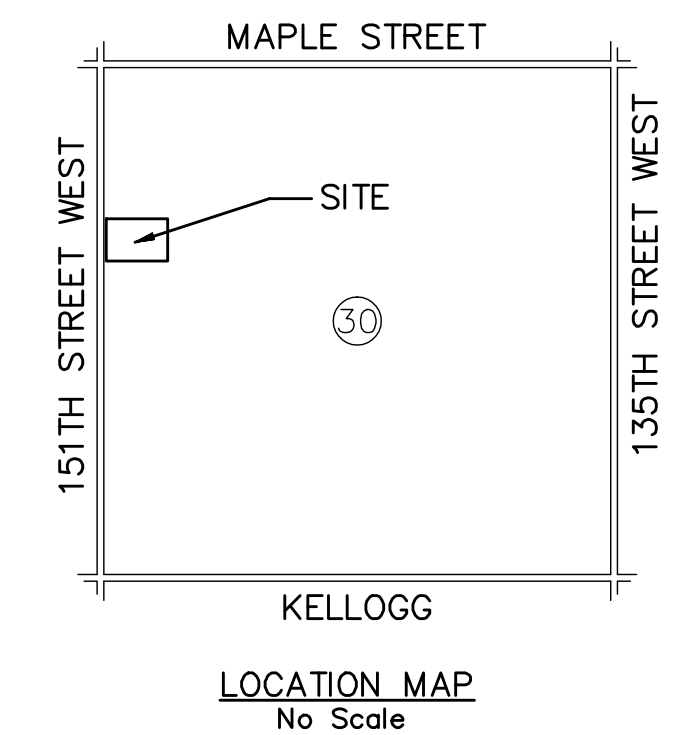
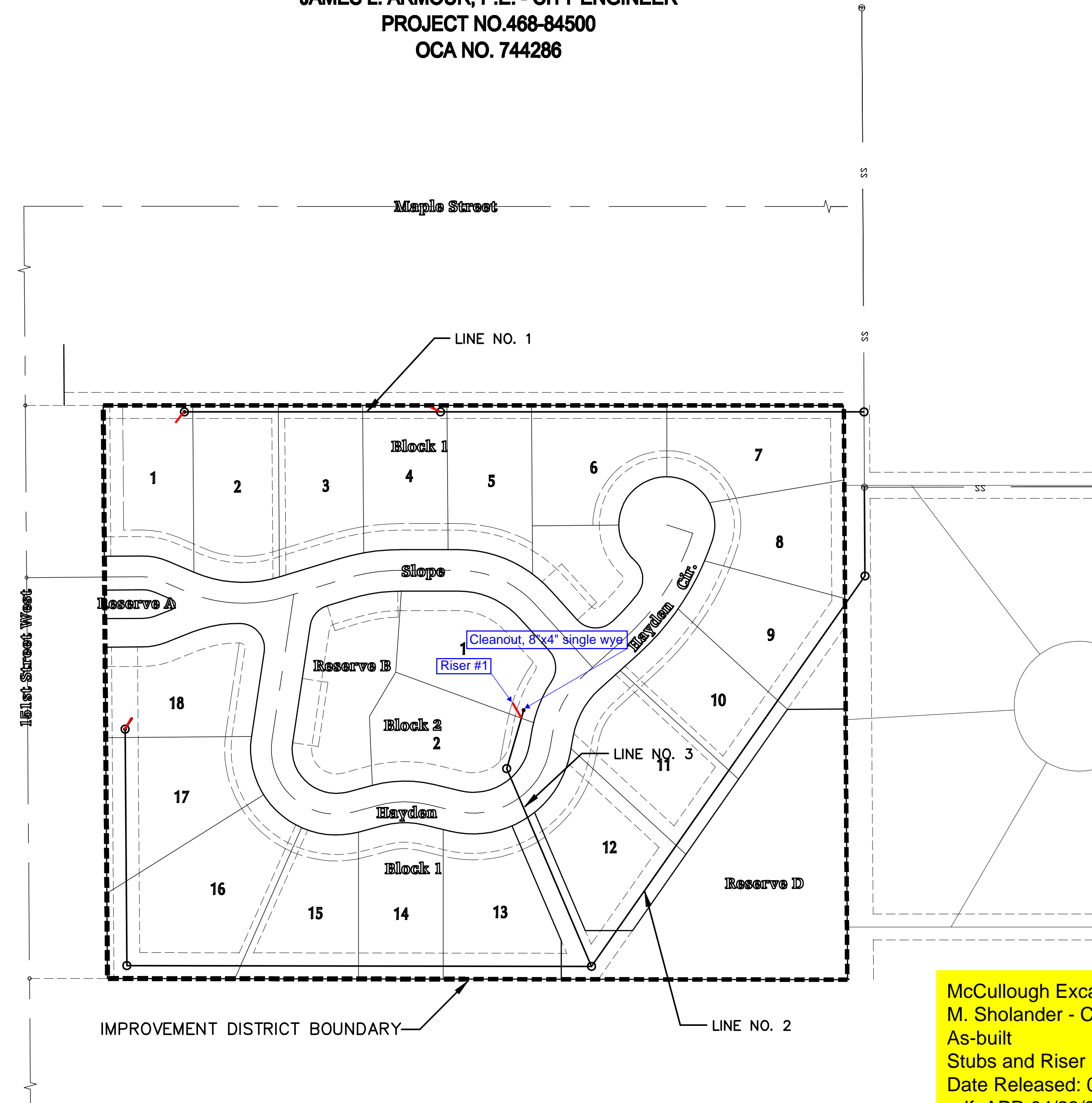
The Contractor must notify the following in case of an emergency:

Cox Communications	262-4270 or 263-2061
Westar Energy	261-6824
Aquila Networks	941-1608
Arkla Gas Company	942-8350 or 263-8161
AT&T	268-2102
City of Wichita Water Department	268-4908
City of Wichita Sewer Maintenance	268-4071
- Existing utility lines and their location, as shown on the plans, represent the best information obtainable for design. The contractor will be required to work around existing utilities within the right-of-way which do not conflict with proposed construction.
- Rubble from the removal of miscellaneous structures and excess excavation which is to be wasted shall be the disposed of on sites to be provided by the Contractor. These sites shall be approved by the Engineer as to suitability, appearance and site location. Locations that, in the opinion of the Engineer, will leave an unsightly appearance will not be approved.  
  

All disposal sites must be approved by the Kansas Department of Health and Environment. Material either stockpiled or disposed of in a flood plain would require a Kansas State Board of Agriculture permit. Any material dumped in waters of the United States or wetlands is subject to U.S. Corps. of Engineers permitting regulations. Any material buried or stockpiled beyond approved construction limits would require additional archaeological investigations unless buried in a previously approved borrow location.
- The Contractor shall be responsible for maintaining continuous flow of sewage through construction. Contractor's proposed method for maintaining sewage flow shall be approved by the Engineer. Cost of maintaining flow of sewage through construction will not be paid for directly and this cost shall be considered as subsidiary to the other pay items of the work.
- The Contractor shall be responsible for preserving property irons. The Contractor will be required to re-establish any property irons which are damaged or destroyed by his construction operations. Such irons shall be re-established by a licensed land surveyor in accordance with state laws.
- Trees and shrubs in public right-of-way which are in direct conflict with proposed new construction shall be removed by the Contractor with the Engineer's approval. Trees and shrubs which are not in direct conflict with the proposed new construction shall be saved and protected from damage.
- Contractor shall vacuum test all manholes according to the City of Wichita standard specifications.
- The tops of all Manholes to be set 0.4 feet above existing ground unless otherwise noted.
- All areas disturbed by sewer construction, i.e. R/W, easements, and adjacent properties shall be restored with the same grass/sod as per AR 78.
- Contractor shall maintain all existing BMP(s) on project site during construction. Contractor shall repair or replace any existing BMP(s) that are damaged (Cost subsidiary to site restoration). If BMP(s) were damaged prior to contractor beginning work on project, notify construction inspector or engineer.

**INDEX**

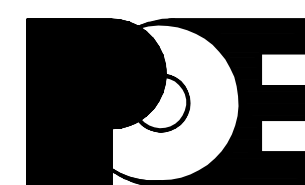
TITLE SHEET	SHEET 1
LINE NO. 1	SHEET 2
LINE NO. 2	SHEET 3
LINE NO. 3	SHEET 4
TYPE "P" MANHOLE	SHEET 5
CLEANOUT DETAIL	SHEET 6
VERTICAL RISER DETAIL	SHEET 7
EROSION CONTROL BMPS	SHEET 8-12
COORDINATE POINTS/POLLUTION PREVENTION	SHEET 13
HIGH POINT WEST ADDITION PLAT	SHEET 14



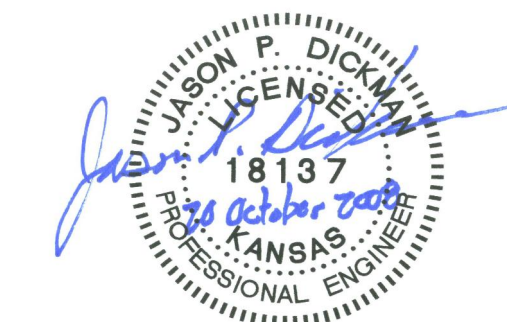
McCullough Excavation - Contractor  
M. Sholander - City of Wichita, Inspector  
As-built  
Date Released: 04/11/2009  
pdf: APR 04/23/2009

**OCTOBER 2008**

PLANS PREPARED BY



**POE & ASSOCIATES, INC.**  
CONSULTING ENGINEERS  
5940 E. Central, Suite 200 - Wichita, KS 67208-4242  
Phone 316/685-4114 - FAX 316/685-4444



**BENCH MARKS**

- Square cut on west hubguard of RCBC 350' North of centerline of Maple and 15' West of centerline of 151st St. West Elevation 1392.65 MSL Datum
- RR spike in W. Fc PP 22' E. of centerline of 151st St. West and 162' S. of N. property line of High Point West Addition Elevation 1418.20 MSL Datum