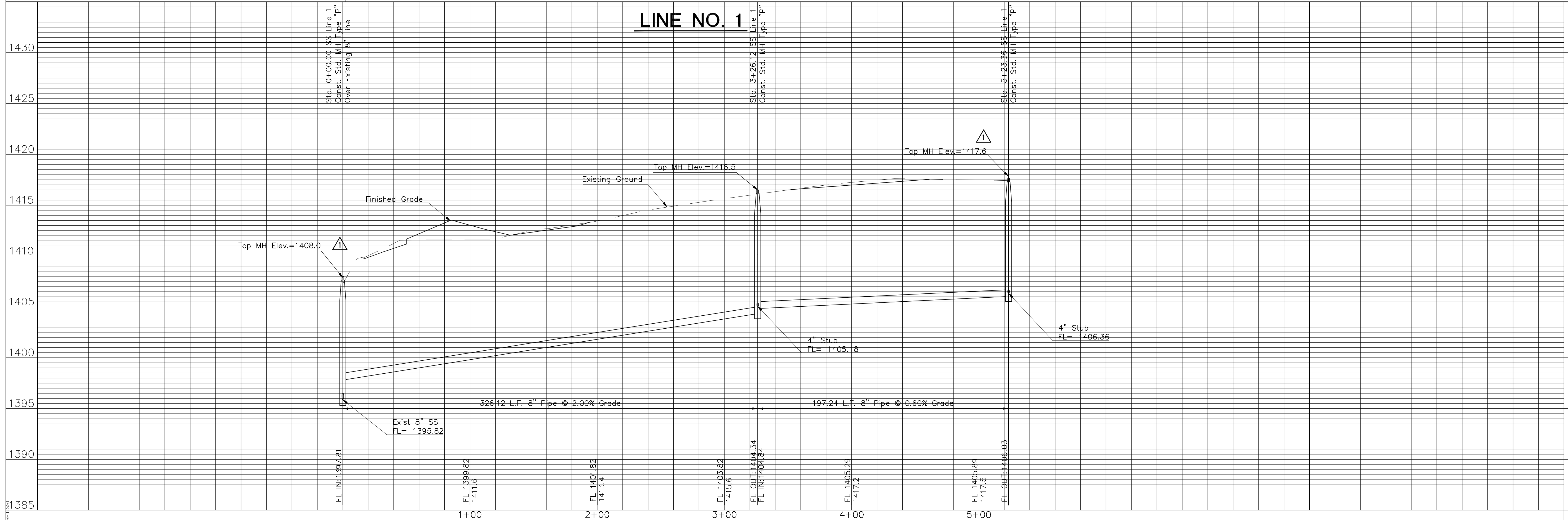


Remove Trees Only as Needed for Construction. Cost Shall be Subsidiary to Site Clearing.

- NOTES:**
- Contractor to Field Verify location and Depth of All Utilities Prior to Construction and Report Findings to Project Engineer.



No.	Date	By	Approved	Revision
1	11-6-2008	MLT	JPD	Added MH in SS Line 2 at Sta. 0+13.25 and revised profile

POE & ASSOCIATES, INC.
CONSULTING ENGINEERS
 5900 E. Central, Suite 200 • Wichita, KS 67208-4242
 Phone 316/665-4114 • FAX 316/665-4444

FINAL

Designed By: J. Dickman
 Drawn By: M. Tucker
 P.O. Job No.: 1916A
 Date: October 2008

Sheet
 2 of 14