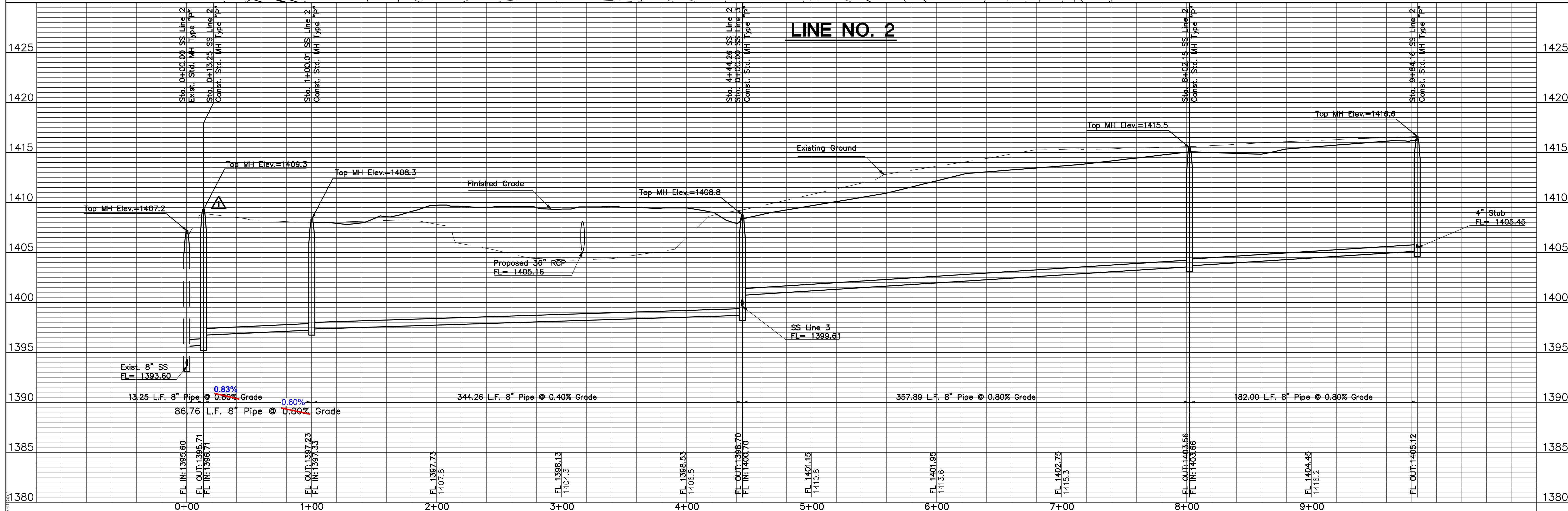


Remove Trees Only as Needed for Construction. Cost Shall be **Subsidiary** to Site Clearing.

- NOTES:**
- Contractor to Field Verify location and Depth of All Utilities Prior to Construction and Report Findings to Project Engineer.



No.	Date	By	Approved	Revision
1	11-6-2008	MLT	JPD	Added MH in SS Line 2 at Sta. 0+13.25 and revised profile

POE & ASSOCIATES, INC.
 CONSULTING ENGINEERS
 5940 E Central, Suite 200 - Wichita, KS 67208-4242
 Phone 316/685-4114 • FAX 316/685-4444

FINAL
 Designed By: J. Dickman
 Drawn By: M. Tucker
 Pce Job No.: 1916A
 Date: October, 2008

HIGH POINT WEST ADDITION
 SANITARY SEWER EXTENSIONS
 LINE NO. 2
 CITY OF WICHITA, KANSAS
 JAMES L. ARMOUR, P.E. - CITY ENGINEER
 C.O.W. Proj. No. 468-84500 OCA No. 744286

3 of 14