

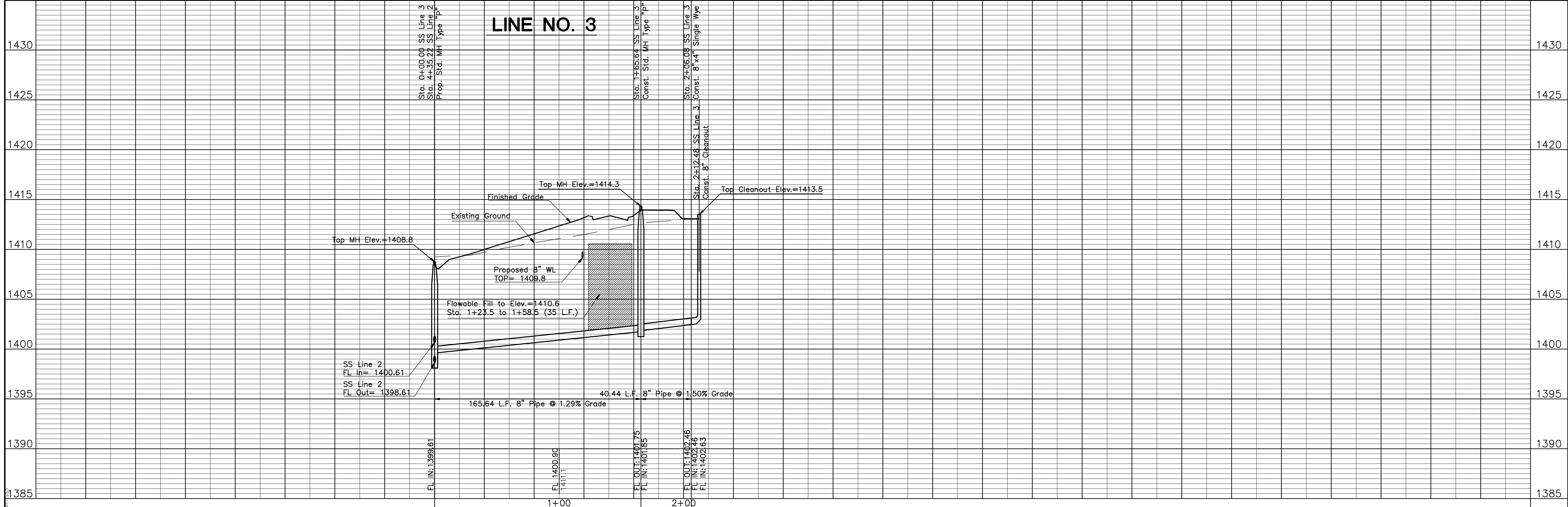
105 lf S of centerline of Hayden & Slope and 25 lf W of centerline of Hayden

Riser #1, 13' Lt.
Sta. 2+07.48, Line No. 3
Distance from Downstream MH = 41'

60 lf S of centerline of intersection of Hayden & Slope and 25 lf W of centerline of Hayden

Remove Trees Only as Needed for Construction. Cost Shall be Subsidiary to Site Clearing.

NOTES:
1. Contractor to Field Verify location and Depth of All Utilities Prior to Construction and Report Findings to Project Engineer.



No.	Date	By	Approved	Revision
HIGH POINT WEST ADDITION SANITARY SEWER EXTENSIONS LINE NO. 3 CITY OF WICHITA, KANSAS JAMES L. ARMOUR, P.E. - CITY ENGINEER C.O.W. Proj. No. 468-94500 OCA No. 744266				
POE & ASSOCIATES, INC. CONSULTING ENGINEERS 5940 E. Central, Suite 200 ■ Wichita, KS 67208-4242 Phone 316/685-4114 ■ FAX 316/685-4444				
FINAL Designed By: J. Dickman Drawn By: M. Tucker P.Oe. Job No.: 1916A Date: October, 2008				
Sheet 4 of 14				