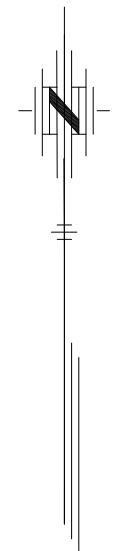
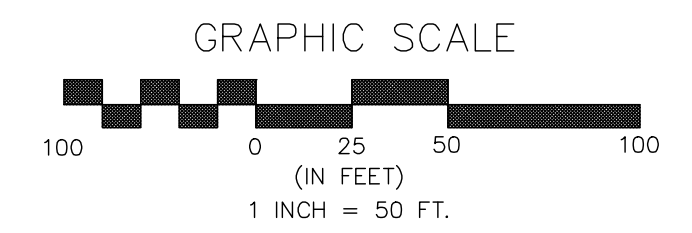




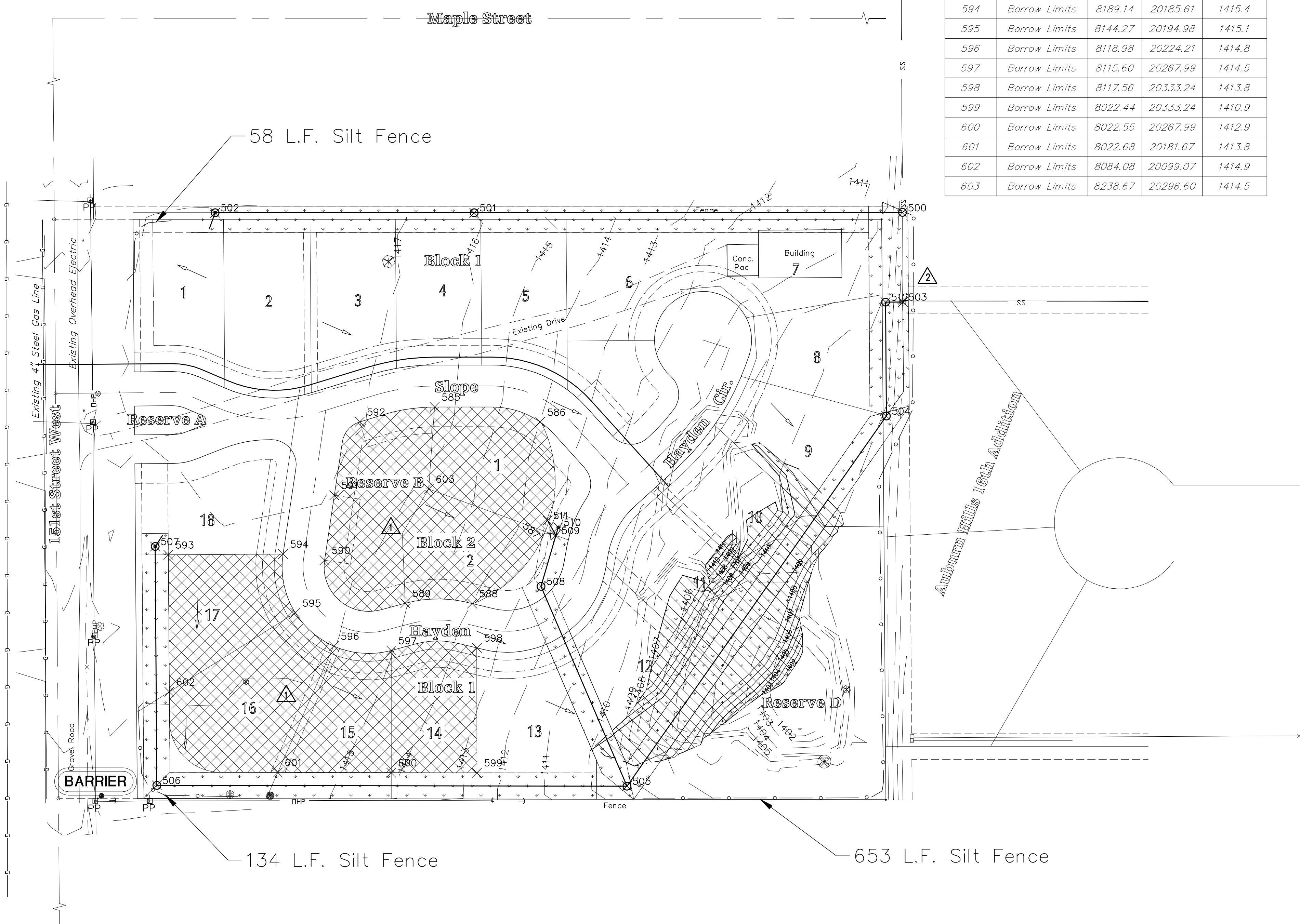
Point Table				
Point #	Raw Description	Northing	Easting	Prop. Elev.
585	Borrow Limits	8301.09	20301.03	1414.9
586	Borrow Limits	8289.65	20381.44	1414.0
587	Borrow Limits	8204.83	20389.13	1413.0
588	Borrow Limits	8151.34	20329.65	1414.0
589	Borrow Limits	8151.60	20278.65	1414.3
590	Borrow Limits	8184.39	20217.26	1415.4
591	Borrow Limits	8233.84	20224.68	1416.0
592	Borrow Limits	8289.79	20244.02	1415.4
593	Borrow Limits	8188.50	20098.31	1415.0
594	Borrow Limits	8189.14	20185.61	1415.4
595	Borrow Limits	8144.27	20194.98	1415.1
596	Borrow Limits	8118.98	20224.21	1414.8
597	Borrow Limits	8115.60	20267.99	1414.5
598	Borrow Limits	8117.56	20333.24	1413.8
599	Borrow Limits	8022.44	20333.24	1410.9
600	Borrow Limits	8022.55	20267.99	1412.9
601	Borrow Limits	8022.68	20181.67	1413.8
602	Borrow Limits	8084.08	20099.07	1414.9
603	Borrow Limits	8238.67	20296.60	1414.5

Point Table				
Point #	Raw Description	Northing	Easting	
144	bm	8288.80	20040.31	
145	bm	8288.86	20040.34	
11	propcor	8444.04	20641.43	
12	propcor	8001.94	20644.66	
13	propcor	8002.87	20044.59	
17	propcor	8888.68	20638.38	
18	propcor	8968.13	20637.92	
19	propcor	9143.97	20636.72	
20	propcor	9365.47	20634.75	
21	propcor	7381.82	20649.18	
22	propcor	7480.62	20648.41	
23	ctrsec	7370.68	22620.22	
24	bm	10382.97	19981.48	
25	seccor	10000.06	20000.24	
26	qtrsec	9999.68	22617.88	
27	qtrsec	7385.30	20019.06	
500	Sta 0+00 SS Line 1	8449.04	20657.32	
501	Sta 3+26.12 SS Line 1	8449.04	20331.20	
502	Sta 5+23.36 SS Line 1	8449.04	20133.96	
503	Sta 0+00 SS Line 2	8381.06	20657.64	
504	Sta 1+00.01 SS Line 2	8294.21	20645.02	
505	Sta 4+44.26 SS Line 2	8012.26	20447.49	
506	Sta 8+02.15 SS Line 2	8012.83	20089.60	
507	Sta 9+84.16 SS Line 2	8194.83	20088.26	
508	Sta 1+65.64 SS Line 3	8164.44	20382.09	
509	Sta 2+06.08 SS Line 3	8203.28	20393.37	
510	Sta 2+12.48 SS Line 3	8209.43	20395.15	
511	Sta 2+12.48 Lt. Line 3	8214.67	20387.10	
512	Sta 0+13.25 SS Line 2	8380.96	20644.39	

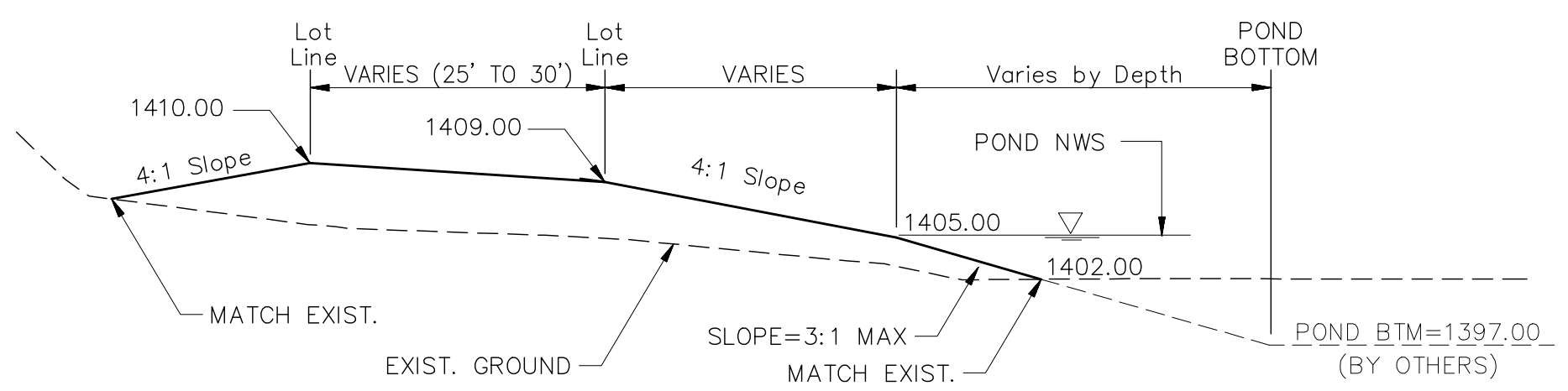


### LEGEND

- 1 Lot number
- Direction of Flow
- Temporary Seeding Area (200 lb/acre Rye Grass) Total Area = 1.2 Acres
- Pond Compacted Fill Area (90% Minimum Density) Total Volume = 2,100 CY
- Silt Fence Barrier 845 LF
- BARRIER** Hay Bail Ditch Check 1 ea.
- Fill Dirt Borrow Areas Total Volume = 2,100 CY



### POND COMPACTED FILL SECTION



\* DIRT QUANTITIES SHOWN ON PLANS REFLECT GRADING AS SHOWN. MATCH WEST SIDE OF EXISTING POND TO ELEV.=1402.00. THE REMAINING POND CONSTRUCTION SHALL BE BY OTHERS.

### BENCH MARKS

- Square cut on west hubguard of RCBC 350' North of centerline of Maple and 15' West of centerline of 151st St. West Elevation 1392.65 MSL Datum
- RR spike in W. Fc PP 22' E. of centerline of 151st St. West and 162' S. of N. property line of High Point West Addition Elevation 1418.20 MSL Datum

NOTE:  
Contractor shall maintain all BMP(s) on project site during construction. Contractor shall repair or replace any BMPs that become damaged (Cost subsidiary to site restoration). If BMP(s) were damaged prior to contractor beginning work on project, notify construction inspector or engineer. See Erosion Control BMP Details for additional information.

No.	Date	By	Approved	Revision	
1	11-6-2008	MLT	JPD	Updated	Dir. Work Areas-Designated Borrow Areas
2	12-11-2008	MLT	JPD	Updated	Coordinate Points for Sanitary Sewer

**HIGH POINT WEST ADDITION  
SANITARY SEWER EXTENSIONS  
COORDINATE POINTS/POLLUTION PREVENTION PLAN  
CITY OF WICHITA, KANSAS**

JAMES L. ARMOUR, P.E. - CITY ENGINEER  
C.O.N. Proj. No. 468-84500 OCA No. 74286

---

**POE & ASSOCIATES, INC.  
CONSULTING ENGINEERS**  
5900 E. Central, Suite 200 • Wichita, KS 67208-4242  
Phone 316/665-4114 • FAX 316/665-4444

---

FINAL

Designed By: J. Dickman	Date: October 2008
Drawn By: M. Tucker	Sheet
Poe Job No.: 1916A	13 of 14