

GENERAL NOTES:

1. Contractor will be required to provide notice to utility companies a minimum of forty-eight (48) hours prior to any excavation, as follows:

Kansas One-Call	687-2470
The Contractor must notify the following in case of an emergency:	
Cox Communications	262-4270
Kansas Gas Service	1-888-482-4950
Westar Energy	383-8650
Aquila Energy	1-800-303-0357
AT&T	268-2245
City of Wichita Water Dept.	268-4563
City of Wichita Sewer Maint.	268-4024
City of Wichita Storm Sewer Maint.	268-4090
City of Wichita Traffic Maint.	268-4034
Conoco Phillips Pipeline Co.	1-877-267-2290
Southern Star Pipeline Co.	529-6600
Kinder-Morgan Pipeline Co.	1-888-844-5658

2. Utility service lines, poles, valve boxes, meters, and etcetera are to be adjusted as necessary by others prior to construction unless the plans specifically call for their adjustment by the Contractor or unless the plans specifically identify a utility to be adjusted by its Owner during construction. Existing utilities and their location, as shown on the plans, represent the best information obtainable for design. The Contractor will be required to work around existing utilities within the right-of-way which do not conflict with proposed construction.

3. Rubble from the removal of miscellaneous structures shall be disposed of on sites to be provided by the Contractor. These sites shall be approved by the Engineer as to suitability, appearance and site location. Locations, in the opinion of the Engineer, that will leave an unsightly appearance will not be approved. All disposal sites must be approved by the Kansas Department of Health and Environment. Material either stockpiled or disposed of in a flood plain would require a Kansas State Board of Agriculture permit. Any material dumped in waters of the United States or wetlands is subject to U.S. Corps. of Engineers permitting regulations. Any material buried or stockpiled beyond approved construction limits would require additional archaeological investigations unless buried in a previously approved borrow location.

4. Trees and shrubs in public right-of-way which are in direct conflict with proposed new construction shall be removed by the Contractor with the Engineer's approval. Trees and shrubs which are not in direct conflict with proposed new construction shall be saved and protected from damage.

5. The Contractor shall be responsible for preserving property irons. The Contractor will be required to re-establish any property irons which are damaged or destroyed by his construction operations. Such irons shall be re-established by a licensed Land Surveyor in accordance with state laws.

7. All existing and proposed erosion control measures including Silt Fencing, Erosion Control Mat, Straw Bales, Inlet Barriers, and Const. Entrance shall be maintained throughout construction by the Contractor and until project is accepted by the City of Wichita. The on-site Engineer shall complete weekly reports on the status of erosion control measures. The Contractor shall be required to comply with maintenance and/or replacement of erosion control measures as determined by the on-site Engineer until project is accepted by City of Wichita.

7. This project is subject to a current SWPP Plan. Contractor shall comply with any unusual requirements as necessary for site to be in compliance during construction.

8. All excess excavation shall remain on-site and shall be stockpiled or spread at a location determined by the Engineer.

9. The surrounding area shall be seeded and mulched as follows: (Permanent Seeding)

- SEED -- Kansas Premium Fescue Blend; 8#/1000 Sq. Ft.
- FERTILIZER -- 12-24-12 Ratio at 350 Lbs./Ac.
- MULCH -- 2 Tons Prairie Hay / Acre

10. The Developer for this project is Via Christi Wichita Health Network, (316)268-5007.

As Built Plans
 Contractor: Mies
 Inspector: Don Eddingfield, Baughman Co.
 pdf's by: KEK, 4/09

Date Released: June 29, 2009
 Stubs
 APR June 30, 2009

Private Project Sanitary Sewer
SANITARY SEWER IMPROVEMENTS

to serve
VIA CHRISTI WEST

CITY OF WICHITA, KANSAS

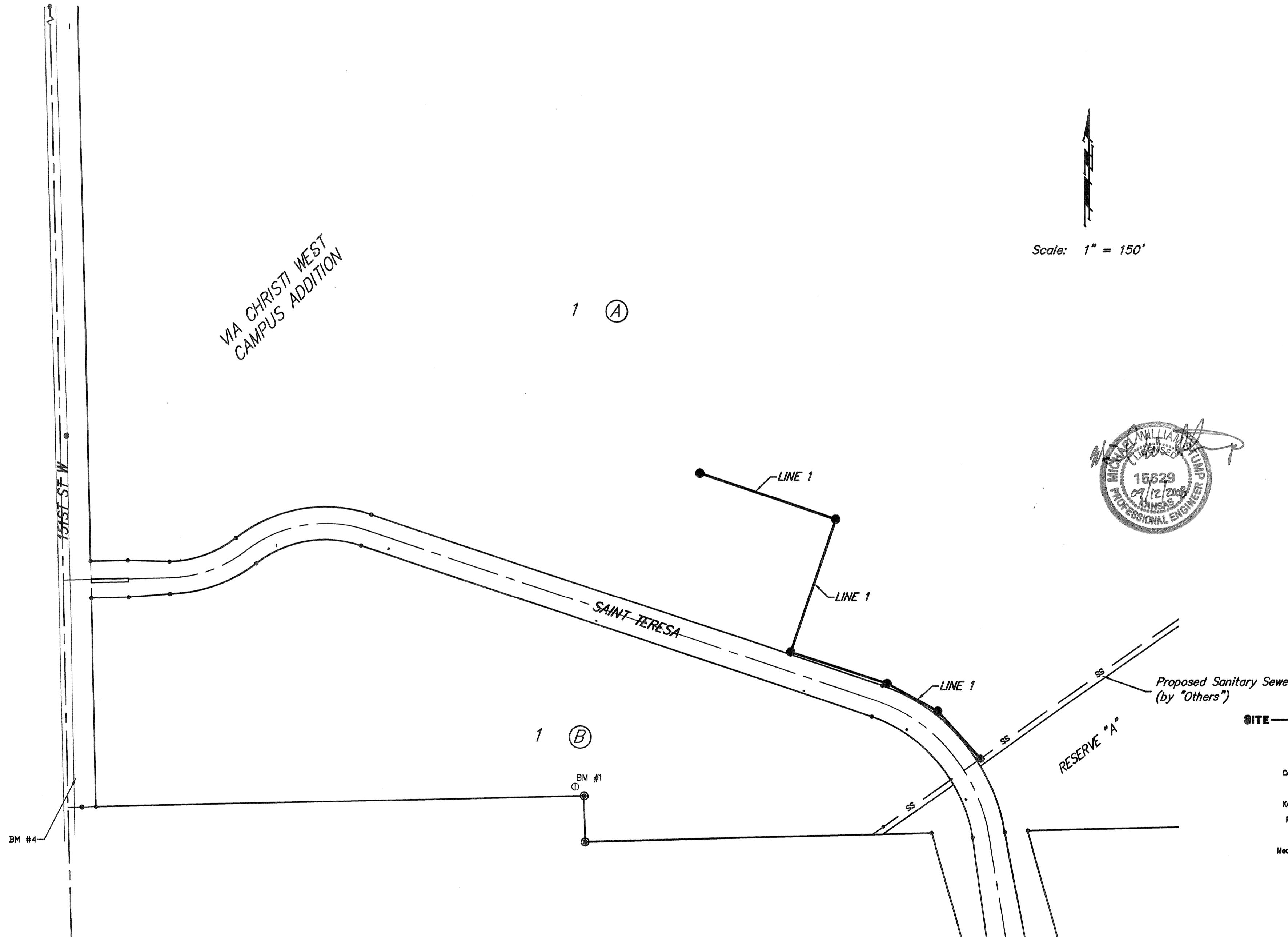
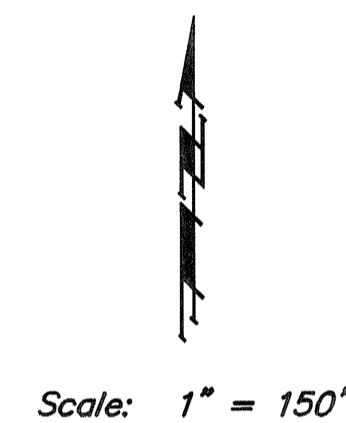
James L. Armour, P.E. City Engineer
 Private Project Number: 1914 PPS (670861)

Benchmarks

- #1: Top of 2" steel "T" post, 0.5'± deep, 10' West & 7' North of property corner.
Elev. = 1360.75 NAVD88
- #2: 3/4" Iron pipe with Sedgwick County Cap in concrete at the SW Cor., SW 1/4, Sec. 2, TWP. 27-S, R-2-W.
Elev. = 1367.00 NAVD88
- #3: " " Cut on top of NW wingwall of bridge on 21st Street North, 27.3' north of section line, 1283.7' E. OF SW Cor., SW 1/4, SEC. 2, TWP. 27-S, R-2-W.
Elev. = 1365.87 NAVD88
- #4: 60d step bench, SE Corner of wooden bridge, 42' N. & 13' W. of the SW Cor., Lot 1, Block B, Via Christi-West Campus Addition.
Elev. = 1363.52 NAVD88

Sheet Index

Title Sheet	1
Line 1	2
Standard Manhole Detail	3
Ring & Cover Detail	4
Erosion Control Details	5-8
Plat	9

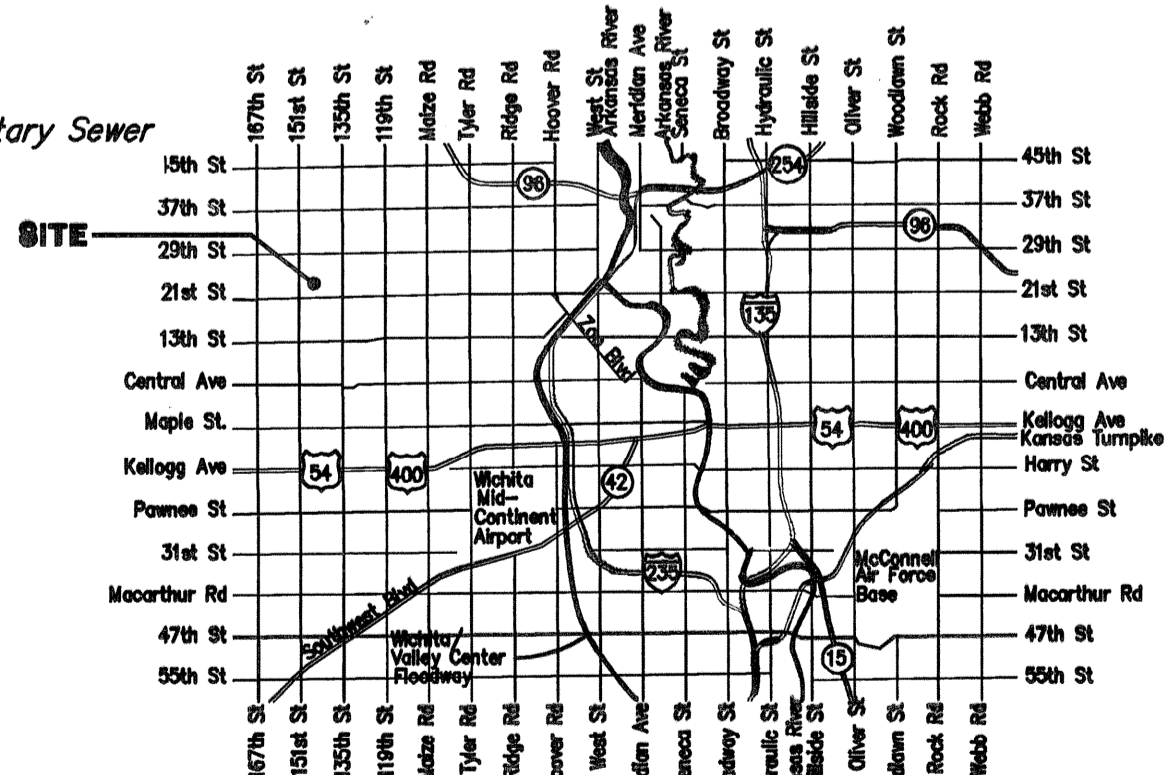


APPROVED AS NOTED
 BY CITY ENGINEER OF WICHITA

Sanitary Sewer *Johanni Kallman 9-15-08*

NOTE TO CONTRACTORS

Installation, inspection and testing for this project is to be provided by a Licensed Consulting Engineering Firm under contract with the Owner/Developer. Said inspection to be in accordance with the City of Wichita standard construction engineering practices and certified by a Licensed Professional Engineer. No work shall be performed in dedicated easements or public right-of-way by the Contractor without such inspection nor shall any work be commenced without written authorization by the City Engineer. All Construction and Materials shall comply with the City of Wichita Specifications and Standards (on file and available in the City Engineer's Office).



Vicinity Map

Baughman ENGINEERING | SURVEYING | PLANNING | LANDSCAPE ARCHITECTURE

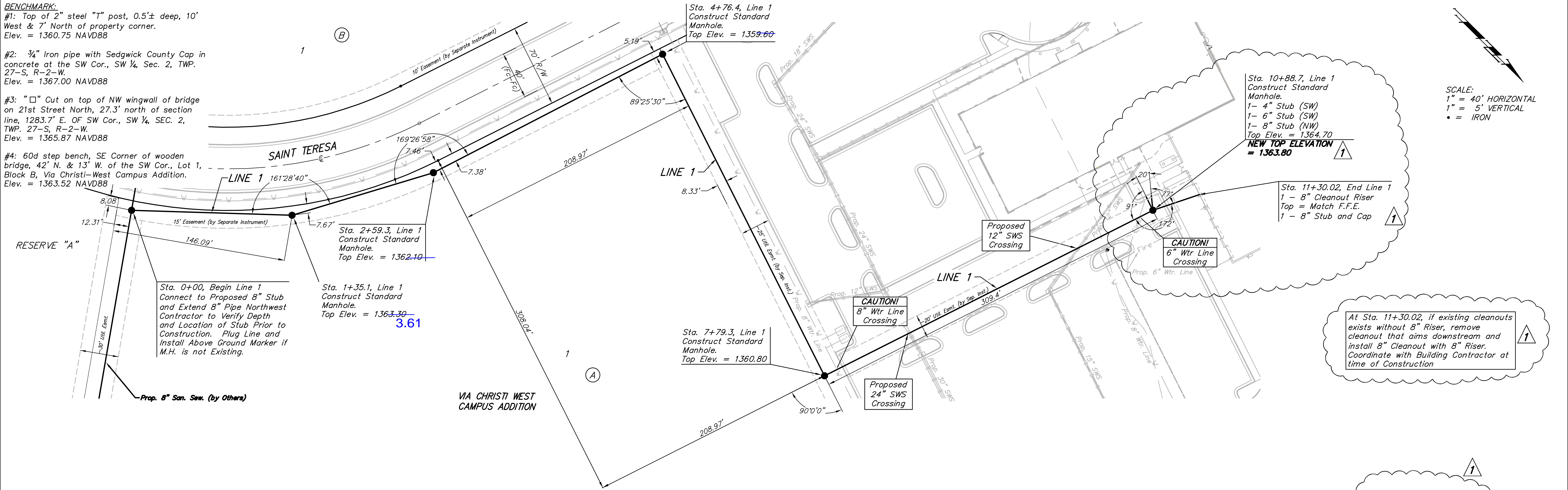
Baughman Company, P.A. 315 Ellis St. Wichita, KS 67211 P 316-262-7271 F 316-262-0149

BENCHMARK:
 #1: Top of 2" steel "T" post, 0.5'± deep, 10' West & 7' North of property corner.
 Elev. = 1360.75 NAVD88

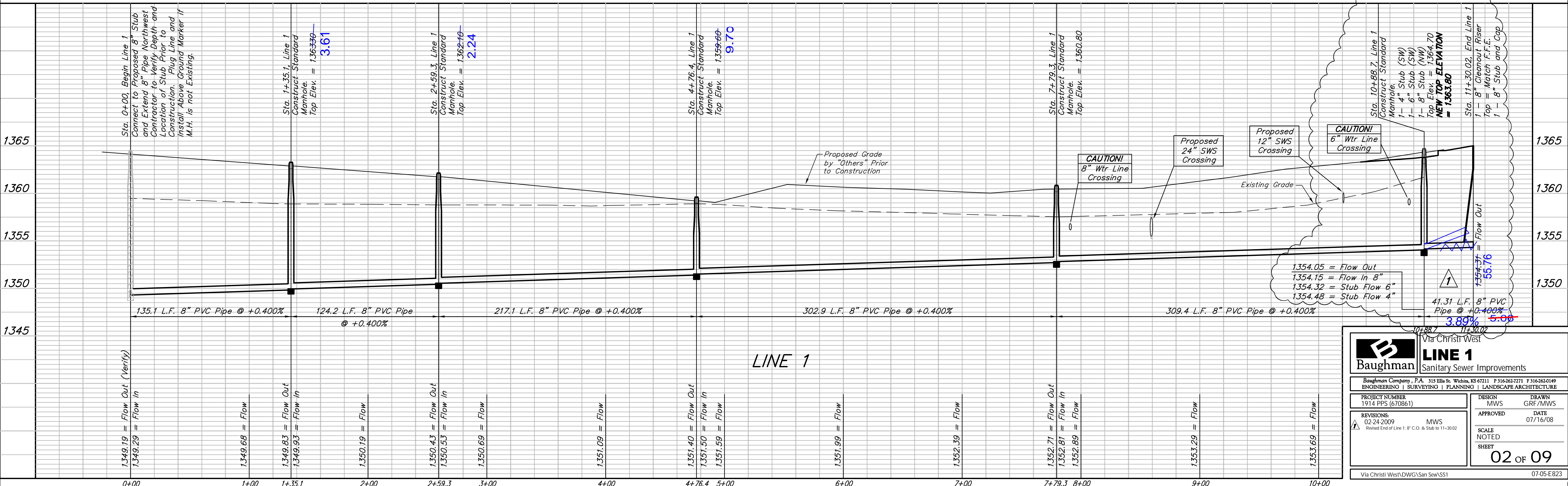
#2: 3/4" Iron pipe with Sedgwick County Cap in concrete at the SW Cor., SW 1/4, Sec. 2, TWP. 27-S, R-2-W.
 Elev. = 1367.00 NAVD88

#3: "□" Cut on top of NW wingwall of bridge on 21st Street North, 27.3' north of section line, 1283.7' E. OF SW Cor., SW 1/4, SEC. 2, TWP. 27-S, R-2-W.
 Elev. = 1365.87 NAVD88

#4: 60d step bench, SE Corner of wooden bridge, 42' N. & 13' W. of the SW Cor., Lot 1, Block B, Via Christi-West Campus Addition.
 Elev. = 1363.52 NAVD88



SCALE:
 1" = 40' HORIZONTAL
 1" = 5' VERTICAL
 • = IRON



Baughman **LINE 1**
 Sanitary Sewer Improvements

Baughman Company, P.A. 315 Ella St., Wichita, KS 67211 P 316-262-7771 F 316-262-0149
 ENGINEERING | SURVEYING | PLANNING | LANDSCAPE ARCHITECTURE

PROJECT NUMBER: 1914 PPS (670861) DESIGN: MWS DRAWN: GRF/MWS
 APPROVED: DATE: 07/16/08

REVISIONS: 02-24-2009 MWS Revised End of Line 1: 8" C.O. & Stub to 11+30.02 SCALE: NOTED SHEET: 02 OF 09

Via Christi West/DWG/San Sew/SS1 07-05-E823